



ASUS EEE PC701SD-WHI004X Keyboard Replacement

Written By: mir



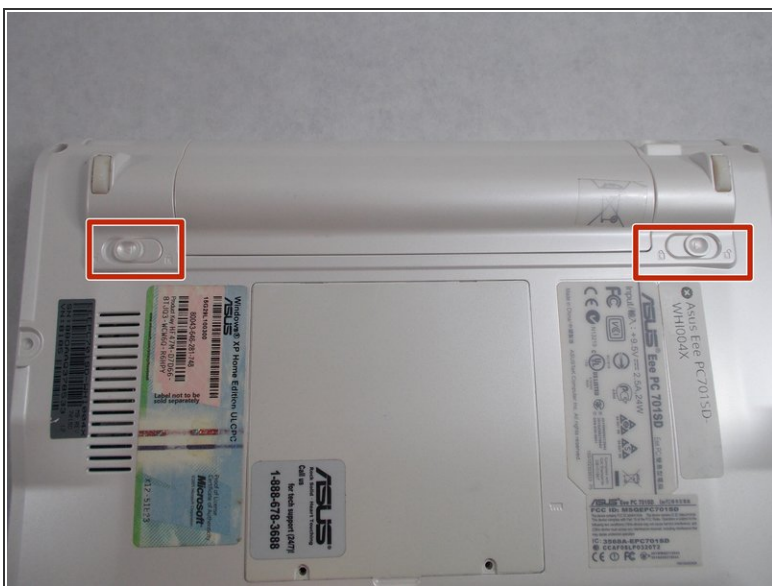
INTRODUCTION

Use this guide to replace the Keyboard of your ASUS EEE PC701SD-WHI004X. Be sure to disconnect the laptop from all sources of power before beginning this process. You should follow this guide if a single key is unresponsive, cannot be pressed, or if the entire keyboard is unresponsive.

TOOLS:

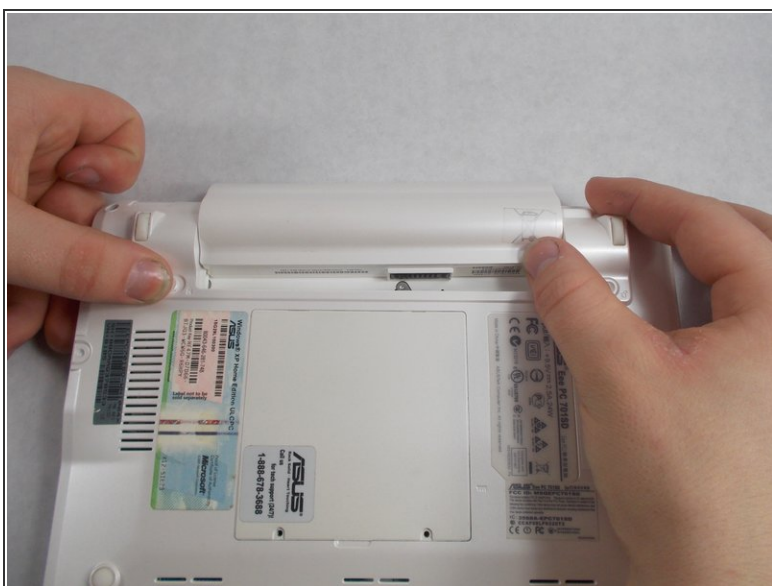
- [Spudger](#) (1)
-

Step 1 — Battery



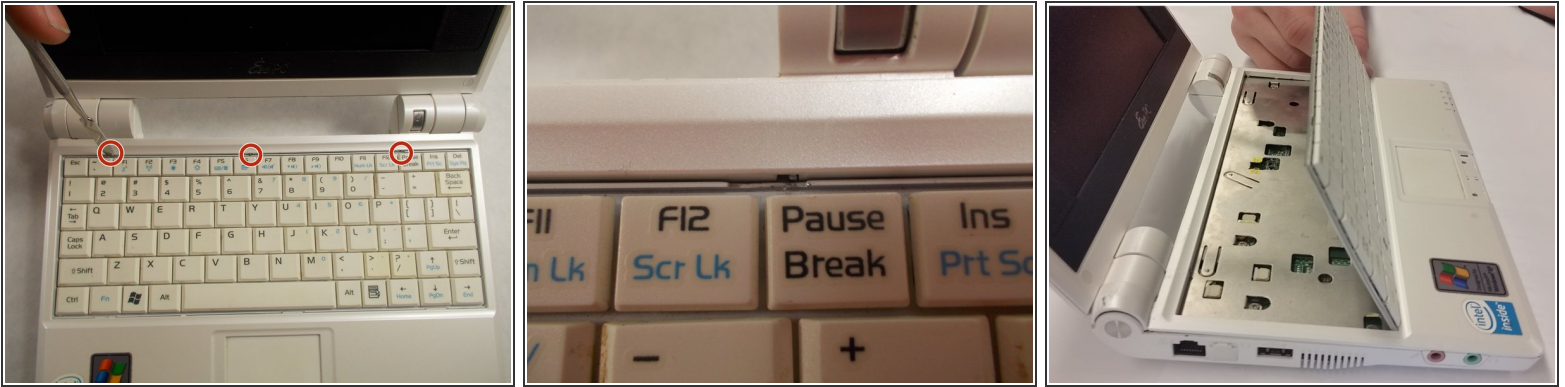
- Flip the laptop over, you should see two battery tabs.
- Slide the right tab towards the right. The orange dot should be visible. This tab will be locked open.

Step 2



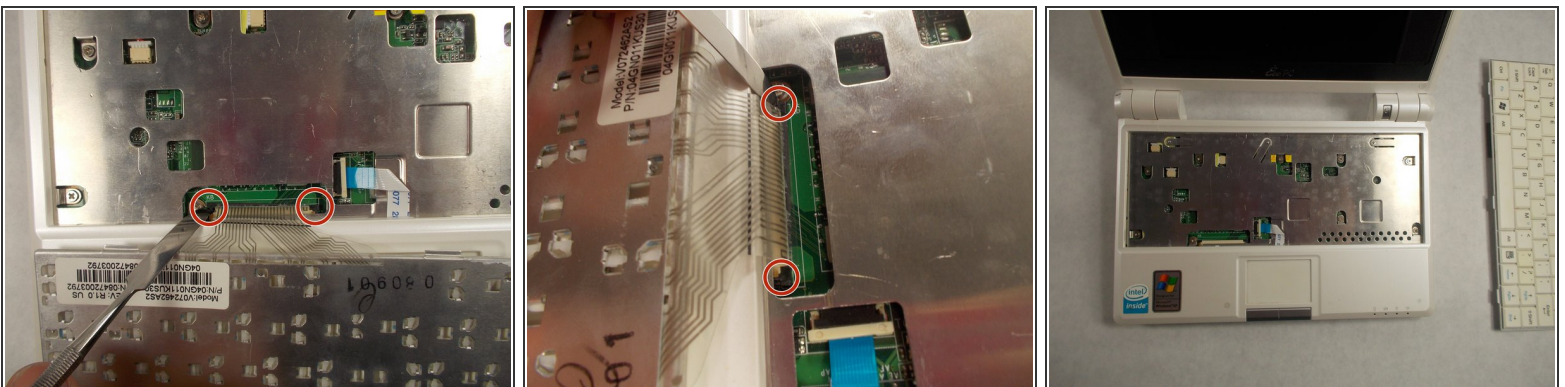
- While holding the left tab towards the left. Gently slide the battery out of the laptop.

Step 3 — Keyboard



- Push the 3 tabs at the top of the keyboard in and down one at a time using a nylon spudger.
 - Once the three tabs have been pushed in, gently pry the top of the keyboard until it begins to hinge out of its slot.
- ⚠ The keyboard is still attached by a cable. Be careful when removing not to damage the cable. Do not yank the keyboard out.

Step 4



- Push the two sides of the ribbon cable connector away from yourself. This will unseat the ribbon cable.
 - Once the tabs are unseated, you can gently remove the ribbon cable by pulling it out of its slot. The keyboard can now be removed.
- ⚠ To be on the safe side, it's better to use a nylon spudger, rather than the metal spudger shown in the picture.

To reassemble your device, follow these instructions in reverse order.