



ASUS Eee PC 1001PX Hard Drive Replacement

A step by step guide to replacing the hard drive in the Asus EeePC 1001PX. Note: This guide will invalidate your warranty. Be aware of this before proceeding. As removing the keyboard is required to access the hard drive this is also covered.

Written By: Barry



INTRODUCTION

It is fairly easy to replace the hard drive and requires very little technical expertise.

There are no security bits inside the case so a standard cross head screwdriver is all that is required.

Additionally it would be useful to have a small flat head screwdriver, and a plastic card about the size of a credit card to separate the case.

Some care must be taken when unclipping cables to ensure that the circuit boards are not damaged.



TOOLS:

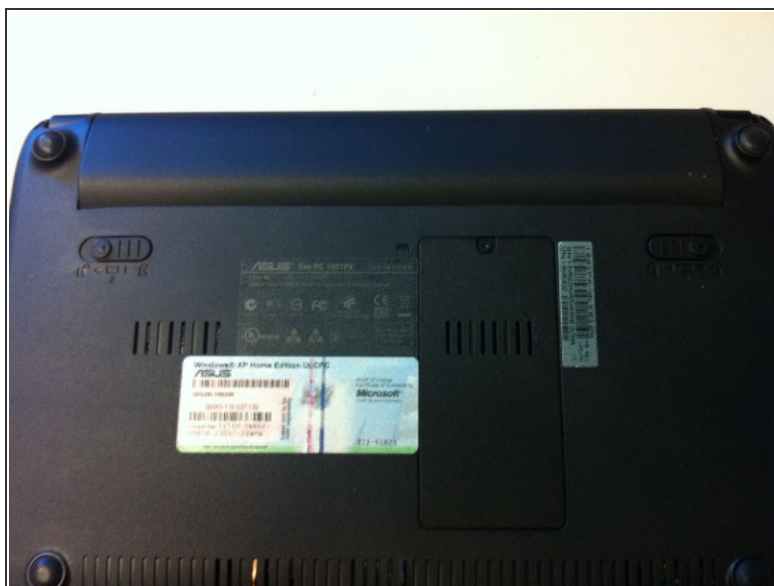
- [Phillips #1 Screwdriver](#) (1)
- [Plastic Cards](#) (1)
- [2.5 mm Flathead Screwdriver](#) (1)



PARTS:

- [1 TB SSD / Upgrade Bundle](#) (1)
- [250 GB SSD / Upgrade Bundle](#) (1)
- [500 GB SSD / Upgrade Bundle](#) (1)
- [2 TB SSD / Upgrade Bundle](#) (1)

Step 1 — Hard Drive



- First turn the netbook upside down and slide the battery catches to release and remove the battery from the netbook

Step 2



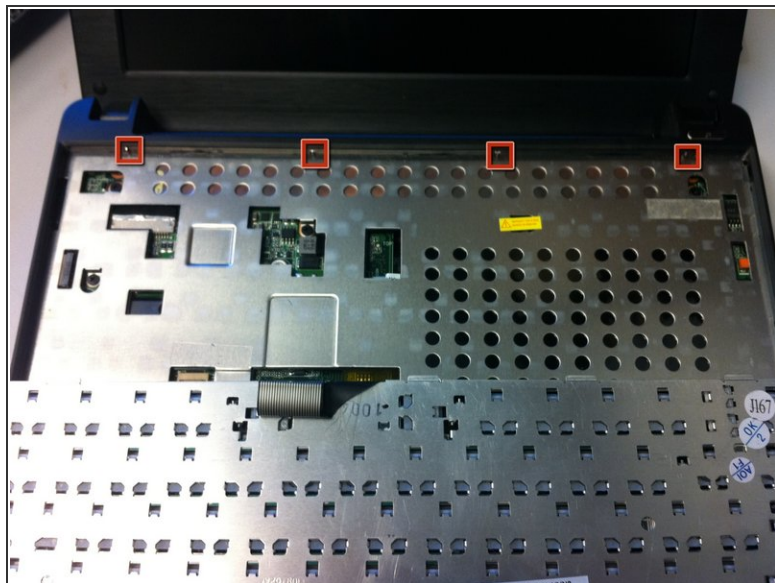
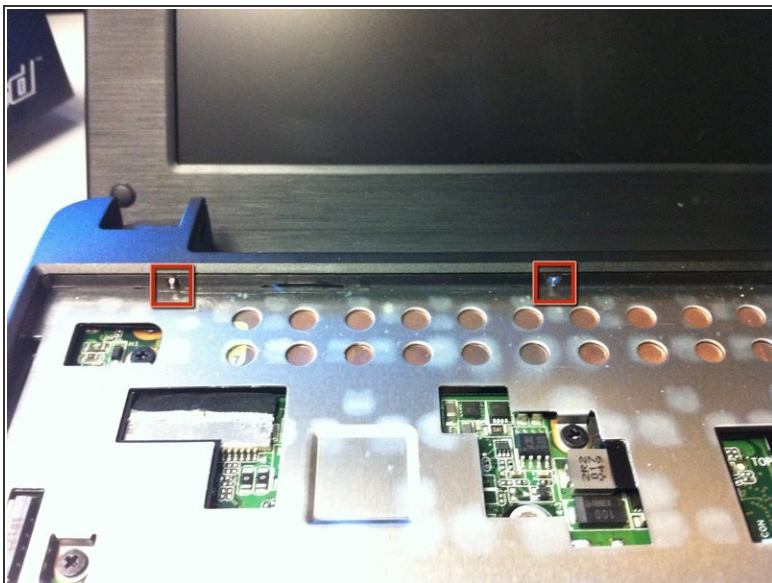
- Locate the memory compartment and undo the screw. Note: It cannot be removed from the compartment door.
- Prise the door away from the netbook from the screw end. There are clips along the side that hold it in place. Once loose, put the door to one side.
- (Image rotated) Undo the screw and remove from the bottom right of the memory compartment. Note: It is not necessary to remove the memory when replacing the Hard Drive.

Step 3



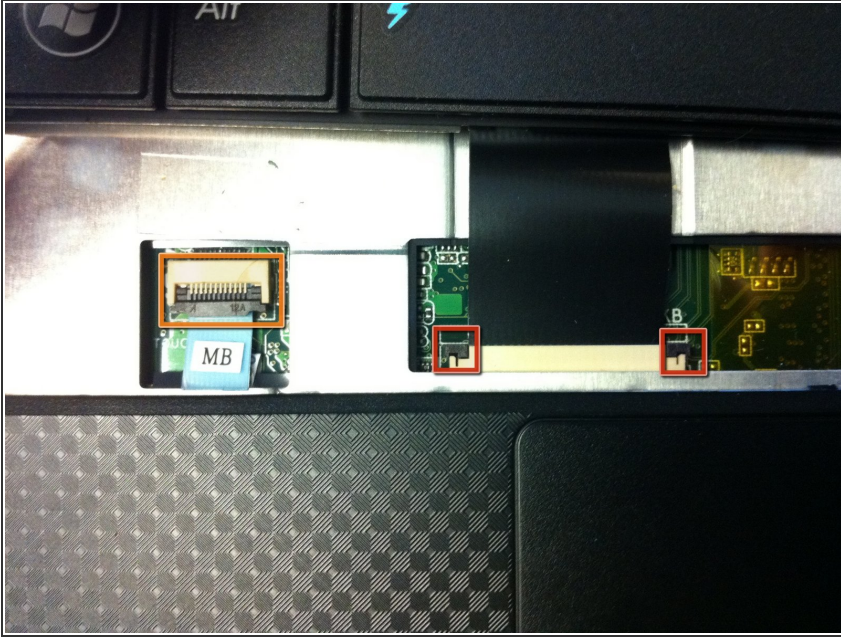
- Remove the remaining four screws from the corners of the netbook.

Step 4



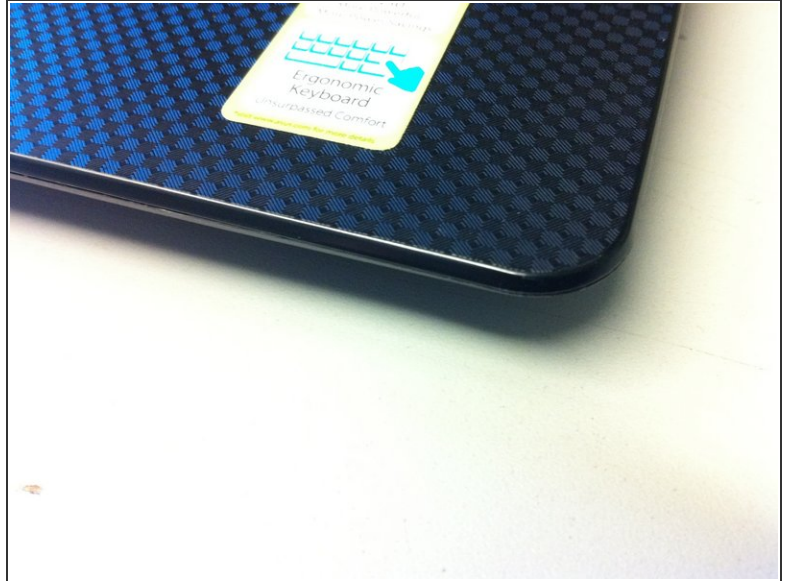
- Turn the netbook back over. To remove the keyboard there are four metal tabs that need to be pushed back. I found a small flat head screwdriver useful for this. Be careful not to scratch the keyboard or case. You can also manipulate these clips from the underside of the netbook, at the back where the battery is.
- I found it useful to begin with the two central clips. The natural spring of the metal prevented the clips from returning back.
- The keyboard should pivot from the front of the case. It is attached with a ribbon cable to the main board. The next step covers releasing the keyboard.

Step 5



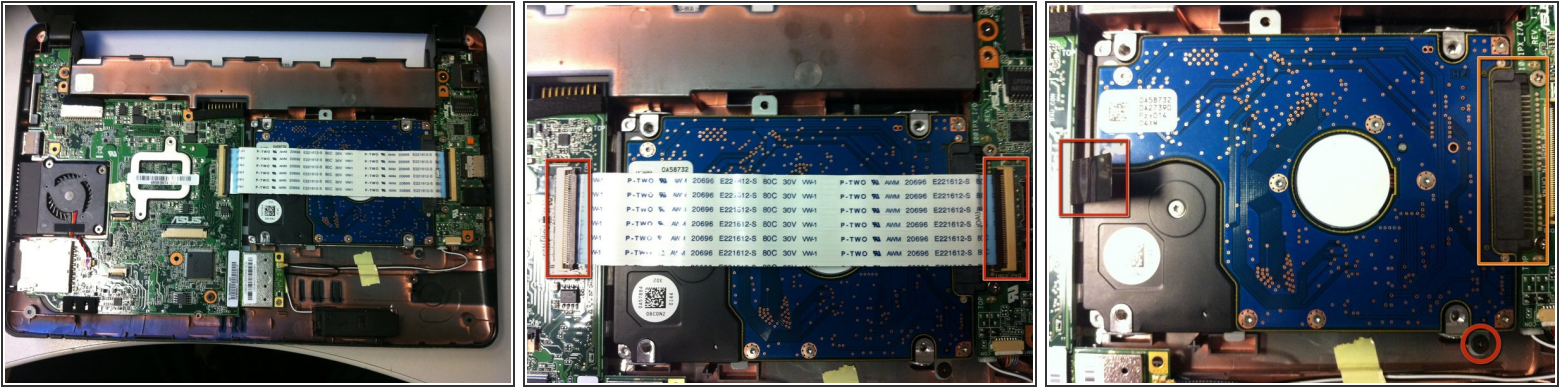
- There are two clips that hold the ribbon cable in place. To release them push them forwards towards the keyboard. The ribbon should then slide out without resistance.
- At this point you should disconnect the touchpad. The cable is on the left (highlighted orange).
- To disconnect the touchpad raise the black bar. There is a clear tab with the label MB stuck on it. Use this to pull the cable from the board. Once again there should be no resistance.

Step 6



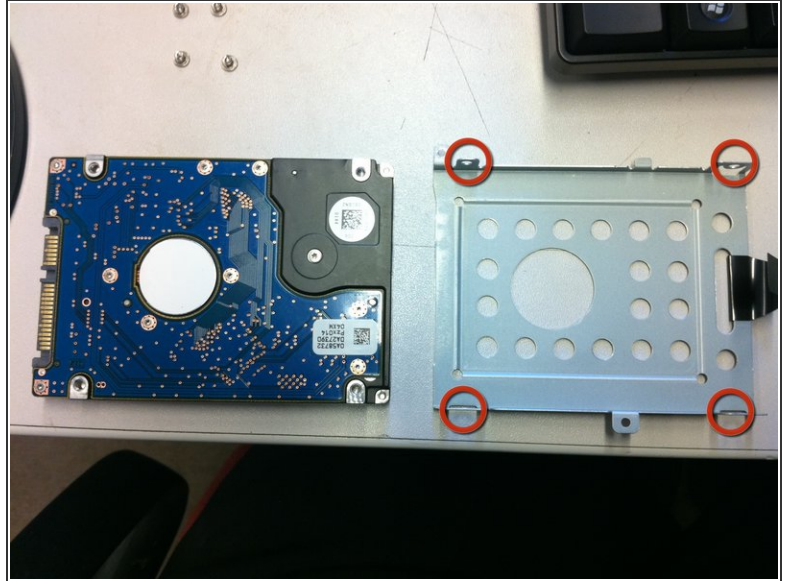
- Six screws must now be removed in order to separate the case. The one highlighted in orange is under a warranty label. This is where your warranty will be voided.
- Once the screws are removed pry the case apart. I found it useful to begin at the rear and work my way around using a plastic card so as not to damage the case. The clips underneath the touchpad are the hardest to unclip.

Step 7



- Lift away the case to reveal the main board(s). The hard drive is clearly visible to the right.
- There is a cable running over the hard drive that connects the two main boards together. Like the touchpad this is removed by lifting the two black retainers and sliding the cable out.
- Remove the remaining screw from the bottom right of the hard drive caddy.
- Raise the hard drive gently using the black tab to the left and slide left to release it from the connector to the right. The hard drive can then be removed.

Step 8



- Before removing the screws from the drive caddy make a note as to which way the drive fits into the caddy. This way when you fit the replacement drive you'll know which way around the drive goes.
- There are four screws, one at each corner. Remove these screws and separate the drive from the caddy.
- The drive can now be replaced. To re-assemble, follow the instructions in reverse. The case and keyboard should clip in quite easily.
- Finally, remember to reattach the touchpad and keyboard when re-assembling!

To reassemble your device, follow these instructions in reverse order.