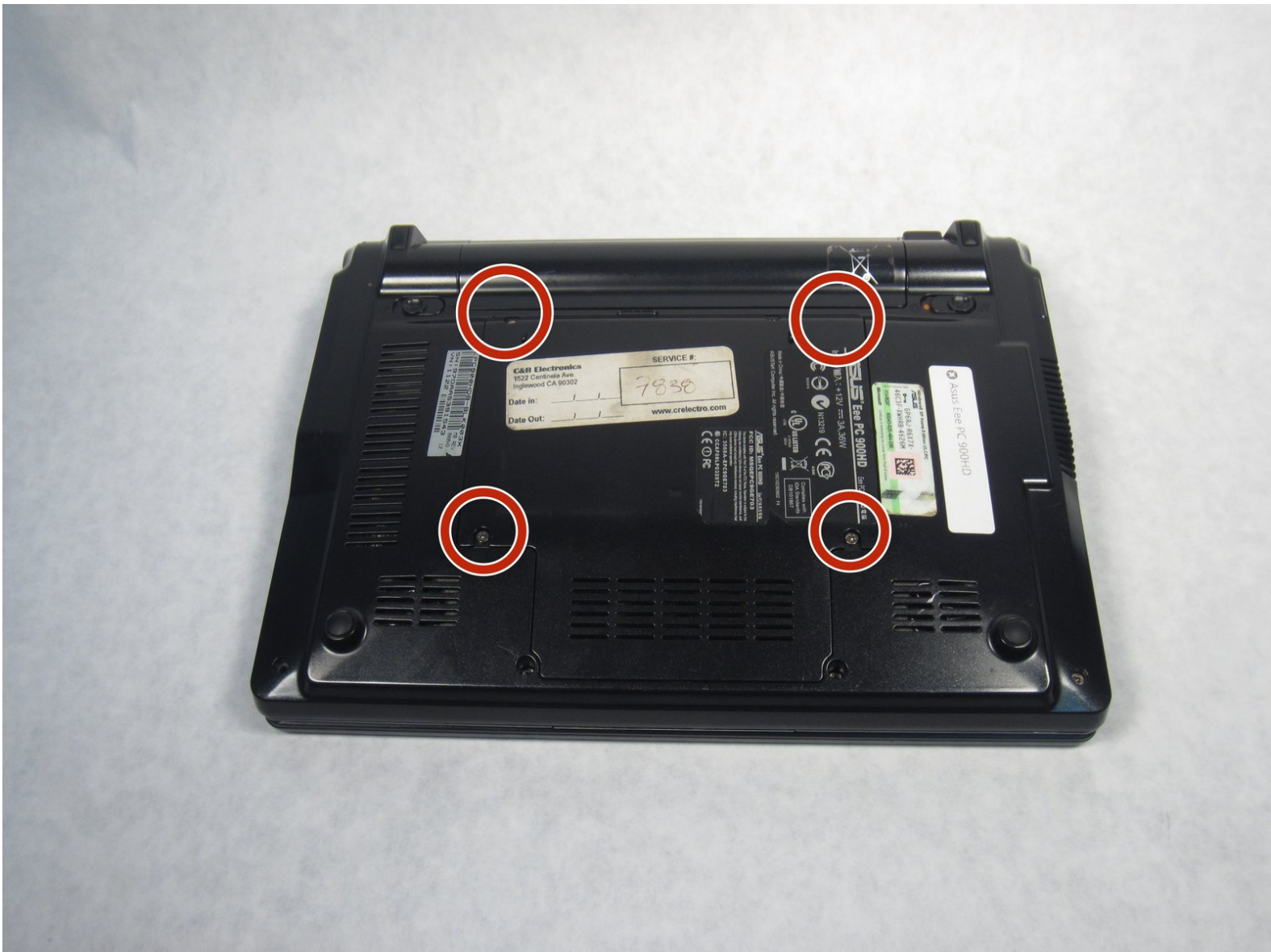




# ASUS Eee PC 900HD Hard Drive Replacement

Replace your hard drive if it is not working properly.

Written By: Kendall Marie Mehlhorn



## INTRODUCTION

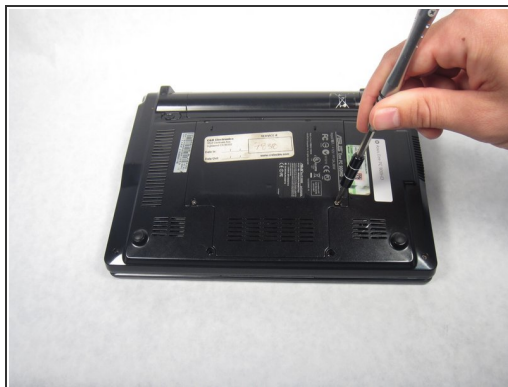
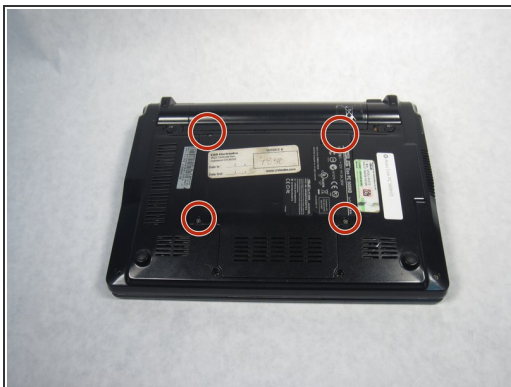
This repair might be necessary for any type of faulty hard drive that may not be functioning correctly. In order to replace the hard drive, be prepared to use a few tools, and be cautious with small fragile parts when taking apart the device.

---

### TOOLS:

- [iFixit Opening Tools](#) (1)
  - [Philips Size J0 Screw Driver](#) (1)
-

## Step 1 — Hard Drive



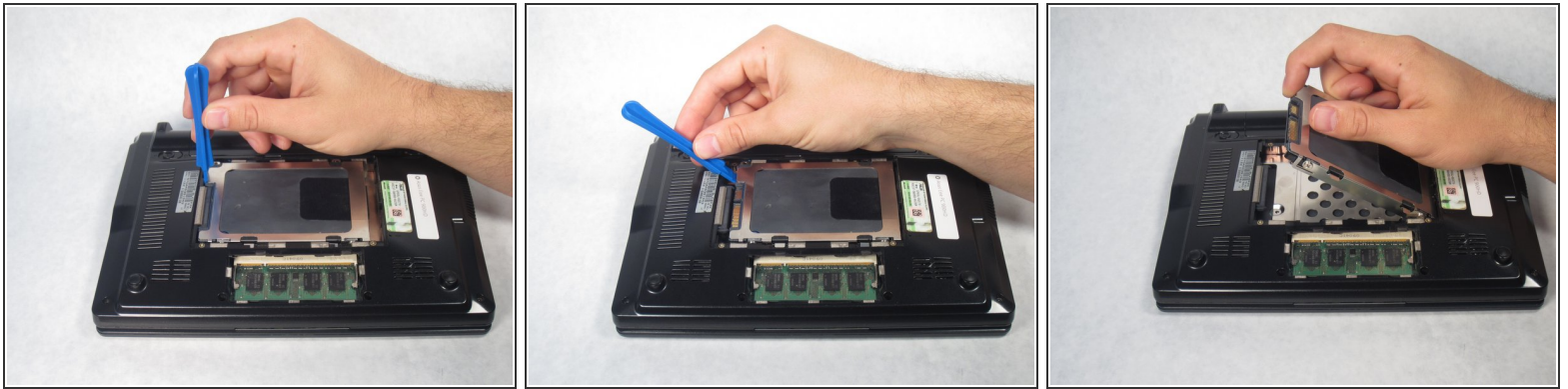
- Remove the four 4.76 mm Philips screws on the back of the laptop using the Phillips J0 Screwdriver.

## Step 2



- Use a plastic opening tool to remove the back cover.

## Step 3



- Starting from the left, use a plastic opening tool to slide the hard drive all the way to the right.
- Once the hard drive is completely to the right, pull up on the hard drive to remove.

To reassemble your device, follow these instructions in reverse order.