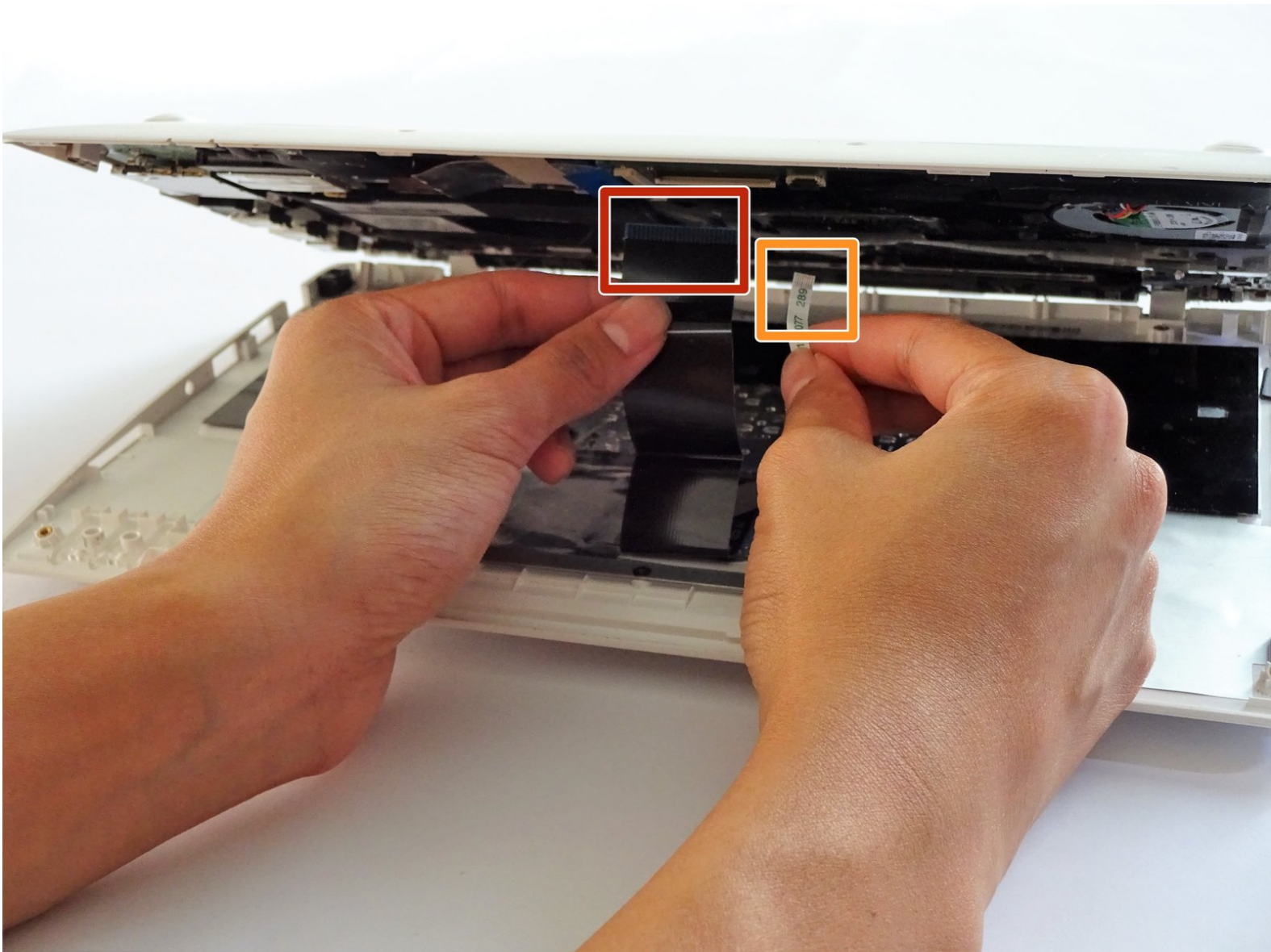




# ASUS K200MA-DS01T Keyboard Replacement

This guide will help to assist in replacing the keyboard of your Asus K200MA-DS01T.

Written By: Aliyah Malapit



## INTRODUCTION

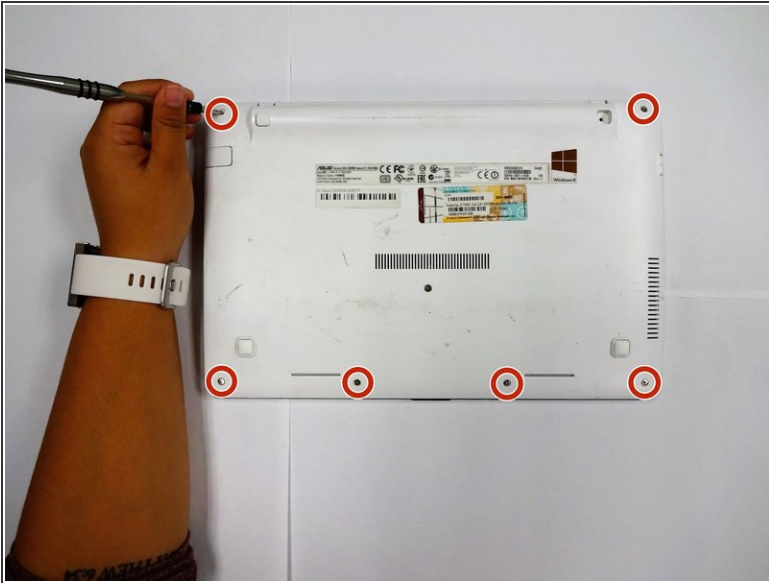
Keyboard replacements for an Asus K200MA 11.6" can be done easily with this step-by-step guide. This island-style keyboard is compatible with 1.5mm keys within a 1.5-2mm range.

---

### TOOLS:

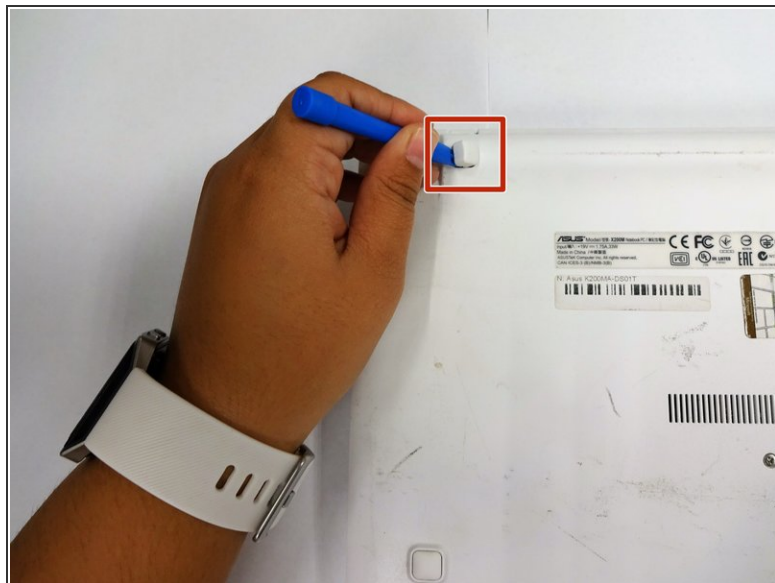
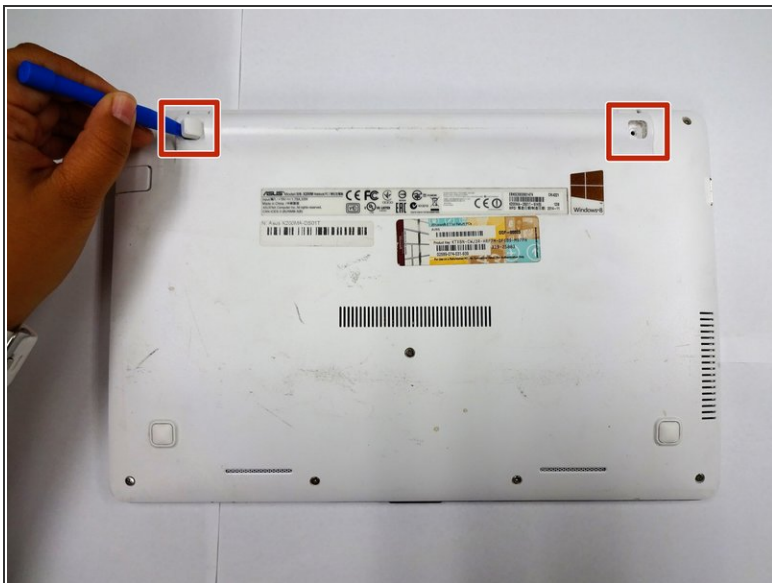
- [Spudger](#) (1)
  - [Phillips #0 Screwdriver](#) (1)
  - [iFixit Opening Tools](#) (1)
-

## Step 1 — Back Panel



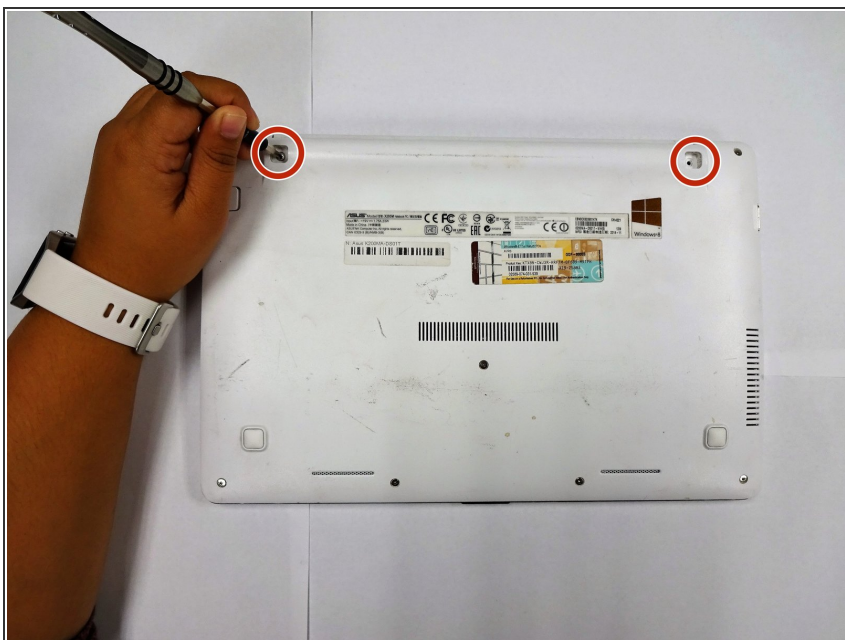
- With the opening facing you, flip the laptop over and remove the following screws from the back panel:
  - Six 4mm Phillips screws using a Phillips #0 screwdriver.
  - One 12mm Phillips screw in the center using a Phillips #0 screwdriver.

## Step 2



- Using a plastic spudger, remove the two rubber stoppers closest to the hinge to reveal screws underneath.

## Step 3



- Remove the following screws:
  - Two 4mm Phillips screws using a Phillips #0 screwdriver.

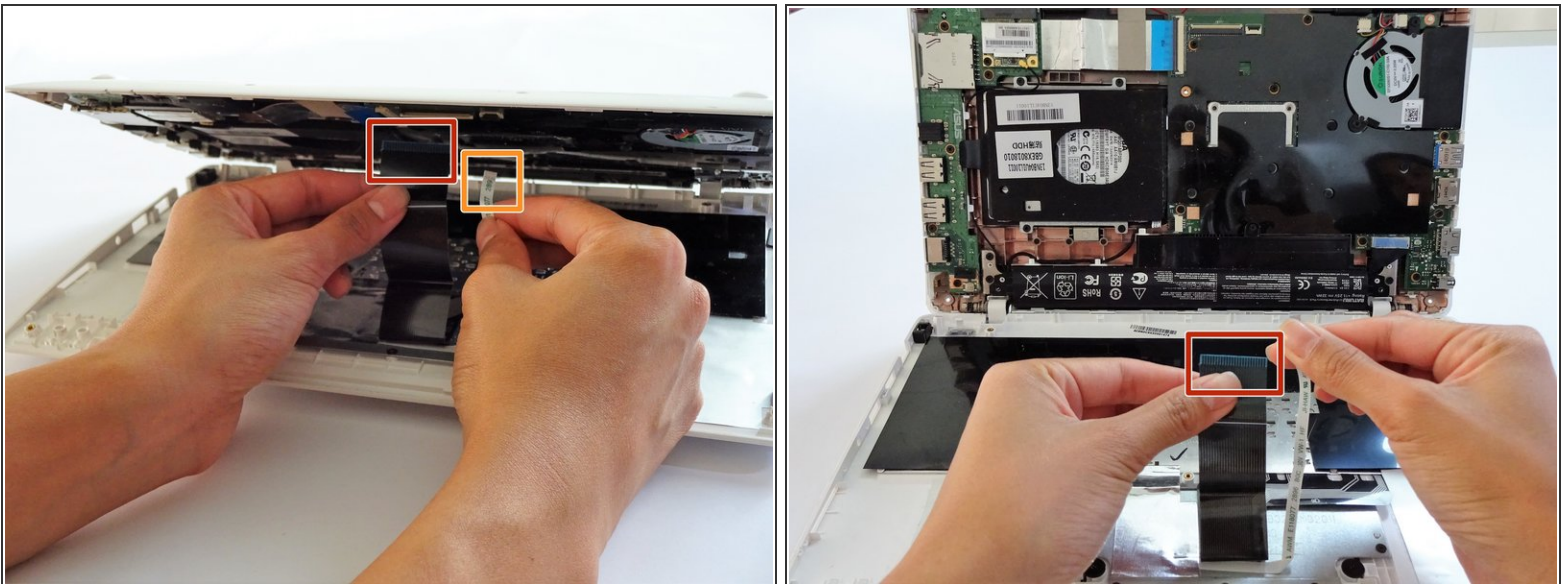


## Step 4



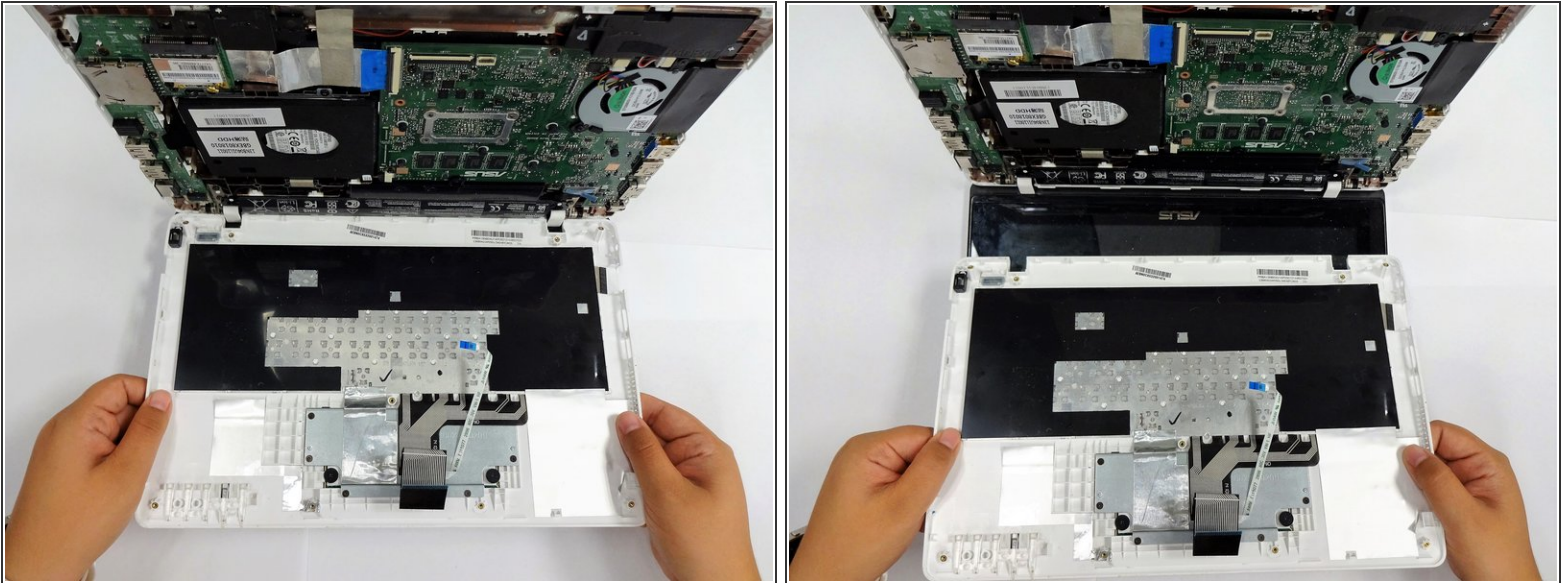
- Using a plastic spudger (and a fair amount of force), pry the back panel up from the keyboard to separate.
- ❗ You may have to use one spudger to wedge between the back panel and keyboard while using another to pry it open in a different spot.

## Step 5 — Keyboard



- To disconnect the keyboard connectors from keyboard and back panel, gently pull wide keyboard connector out.
- Gently pull the narrow connector away from the keyboard.

## Step 6



- Now that the keyboard connectors are unplugged, pull the keyboard off and away from the back panel hinges.

To reassemble your device, follow these instructions in reverse order.