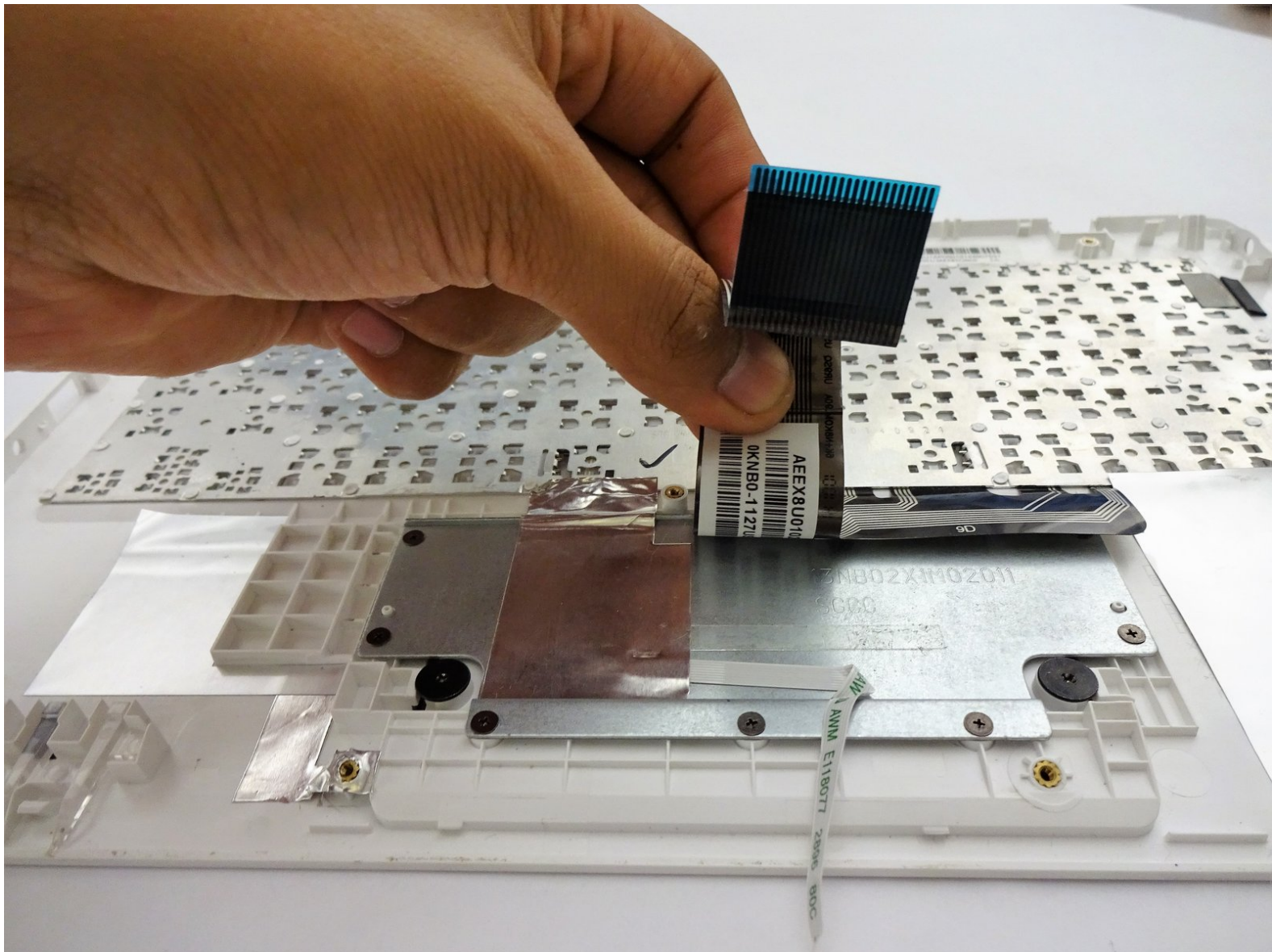




ASUS K200MA-DS01T Trackpad Replacement

Trackpad replacements for an Asus K200MA can be done with this step-by-step guide.

Written By: Terrinda



INTRODUCTION

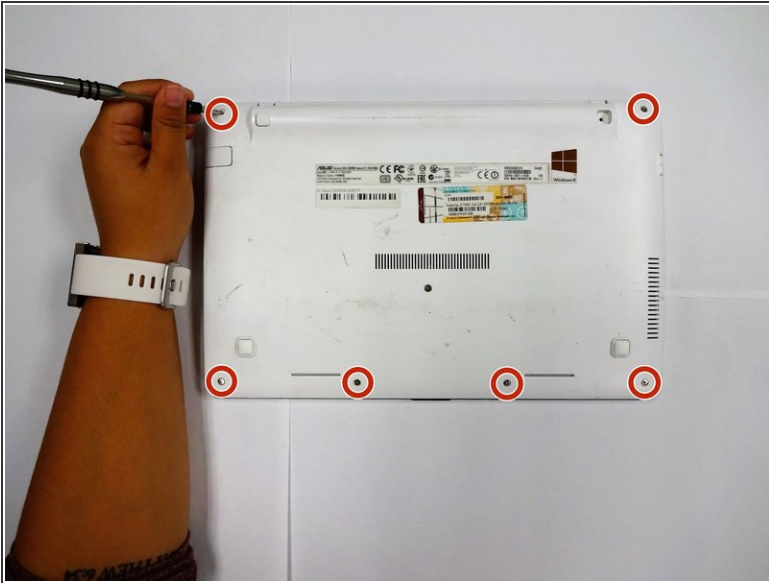
This guide will show you how to replace the track pad on as Asus K200MA laptop.



TOOLS:

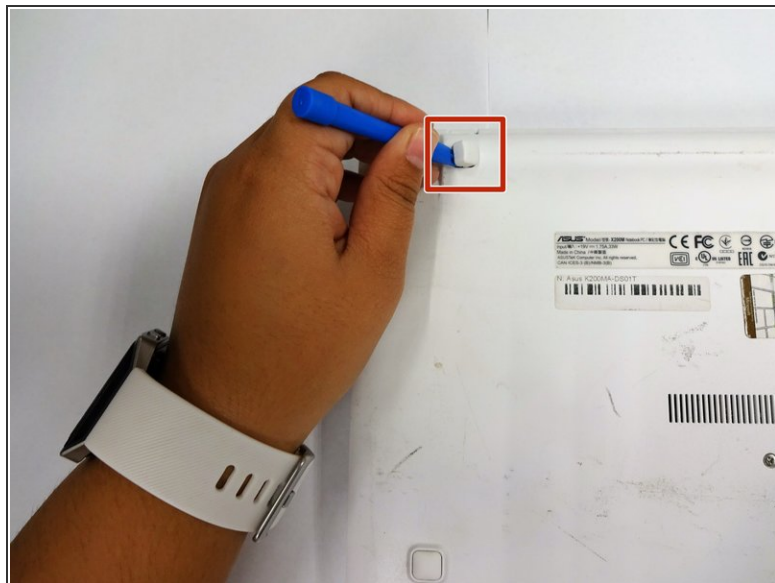
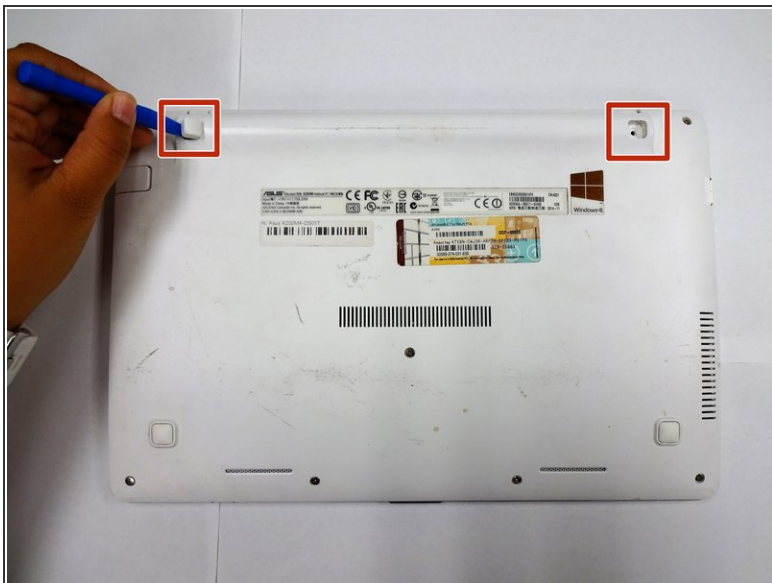
- [Phillips #0 Screwdriver](#) (1)
 - [iFixit Opening Tools](#) (1)
 - [Spudger](#) (1)
-

Step 1 — Back Panel



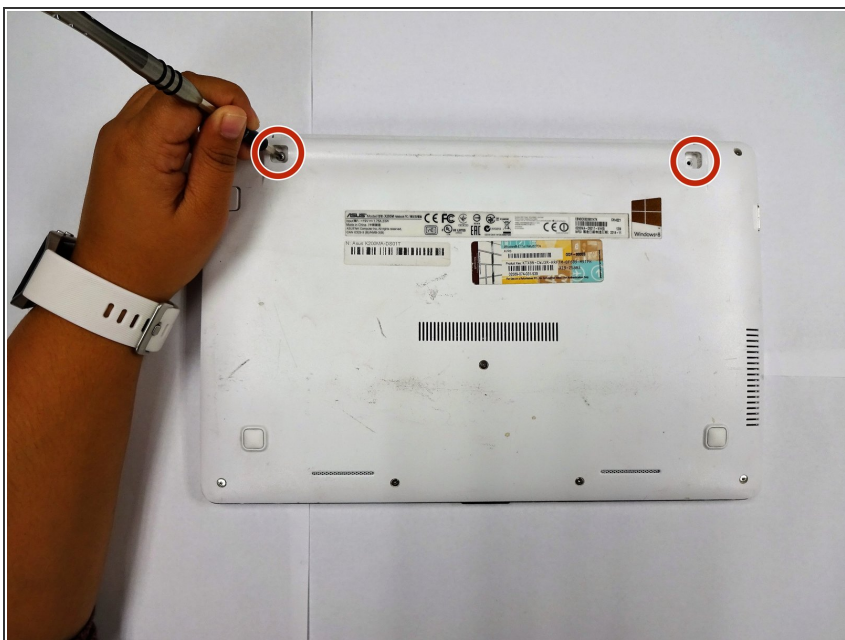
- With the opening facing you, flip the laptop over and remove the following screws from the back panel:
 - Six 4mm Phillips screws using a Phillips #0 screwdriver.
 - One 12mm Phillips screw in the center using a Phillips #0 screwdriver.

Step 2



- Using a plastic spudger, remove the two rubber stoppers closest to the hinge to reveal screws underneath.

Step 3



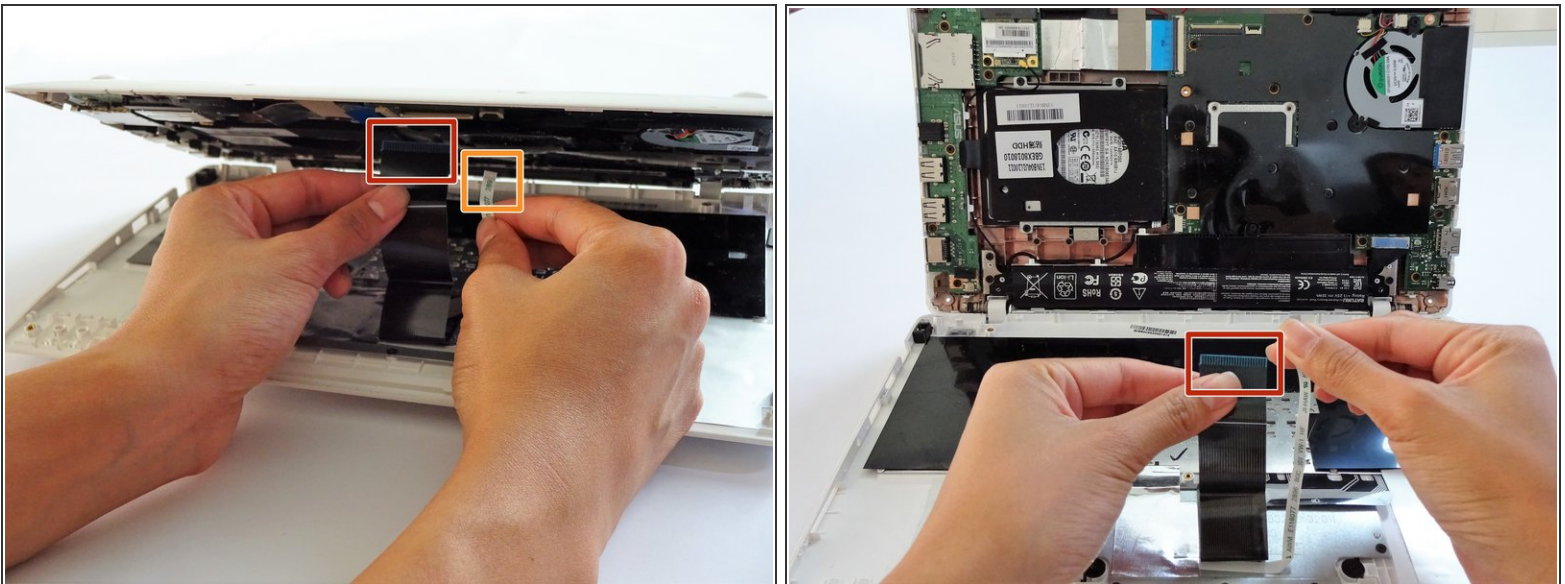
- Remove the following screws:
 - Two 4mm Phillips screws using a Phillips #0 screwdriver.

Step 4



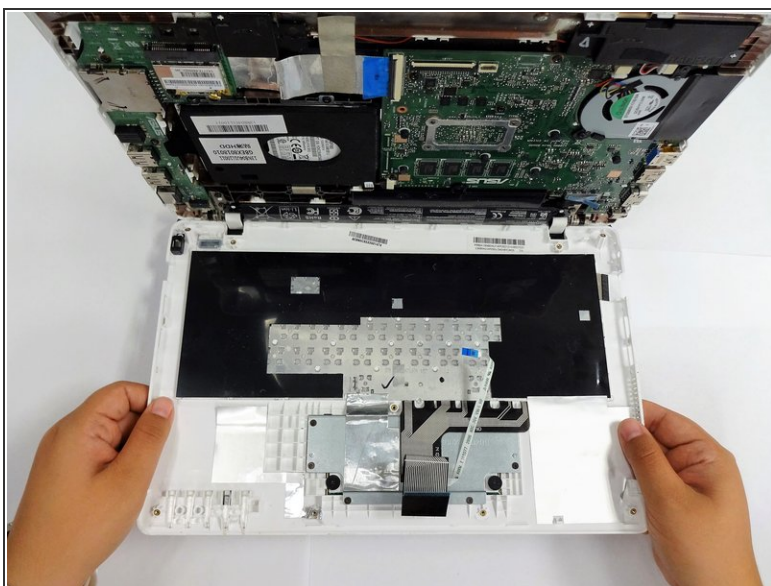
- Using a plastic spudger (and a fair amount of force), pry the back panel up from the keyboard to separate.
- ❗ You may have to use one spudger to wedge between the back panel and keyboard while using another to pry it open in a different spot.

Step 5 — Keyboard



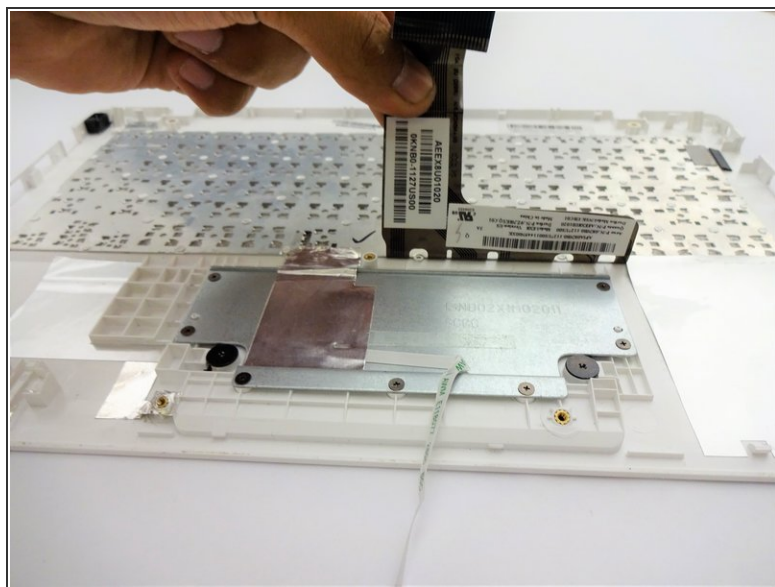
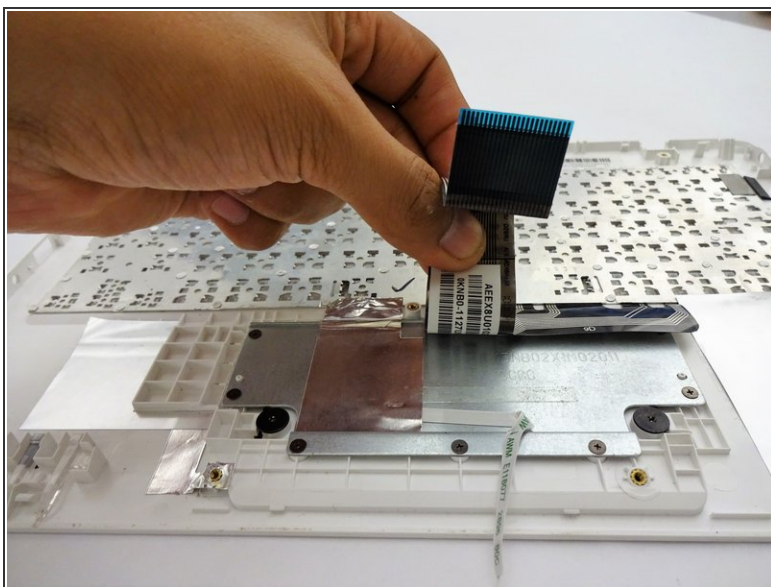
- To disconnect the keyboard connectors from keyboard and back panel, gently pull wide keyboard connector out.
- Gently pull the narrow connector away from the keyboard.

Step 6



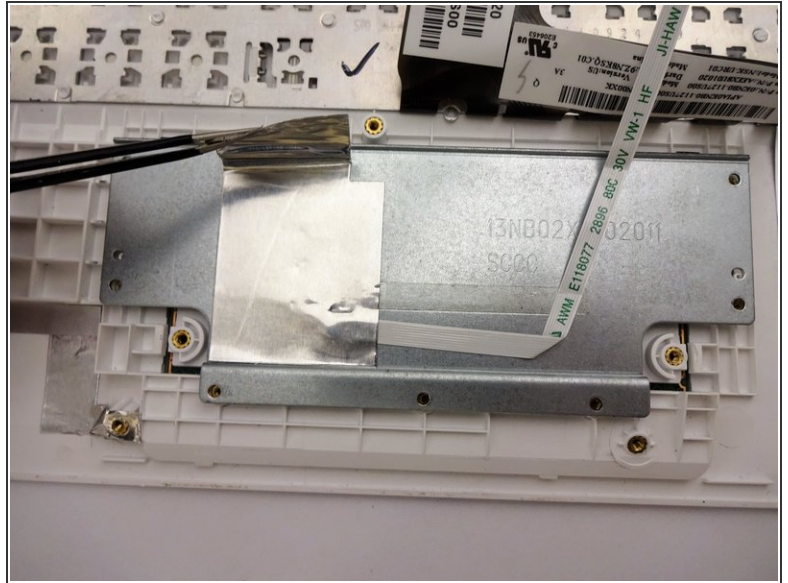
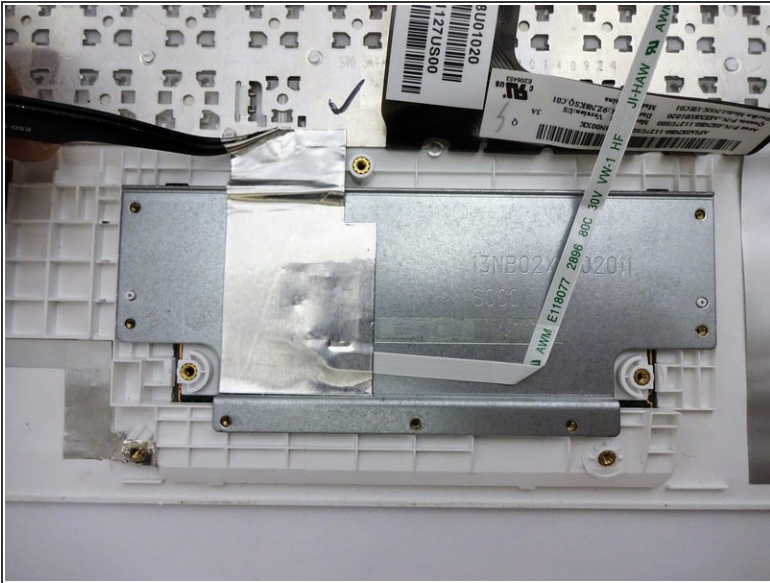
- Now that the keyboard connectors are unplugged, pull the keyboard off and away from the back panel hinges.

Step 7 — Track Pad



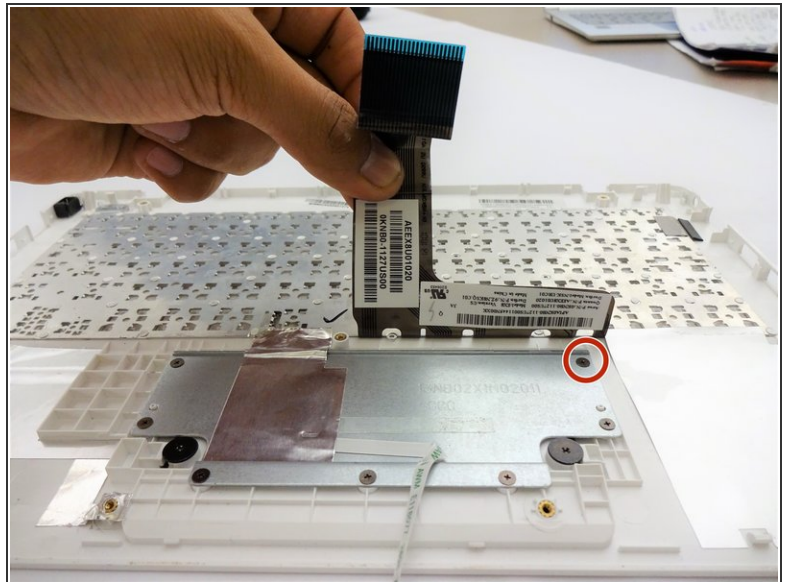
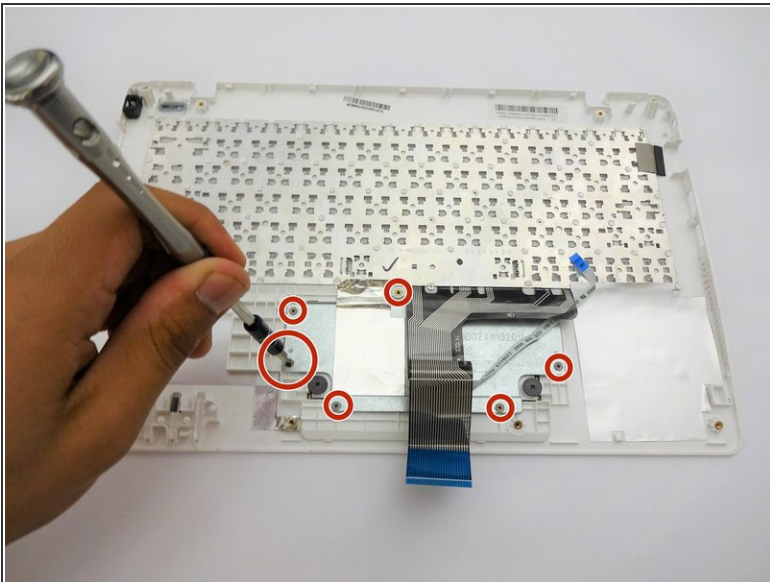
- Lift the keyboard connector from the keyboard.

Step 8



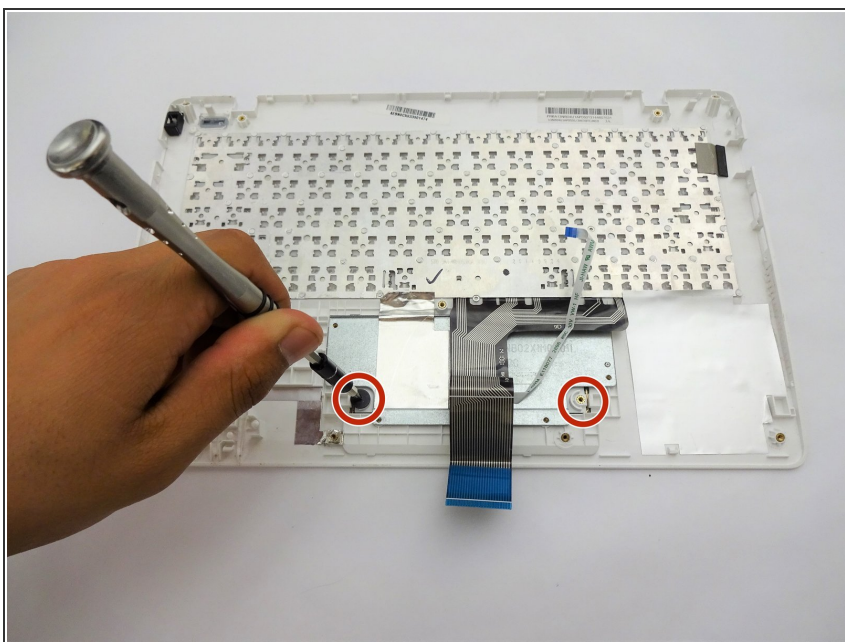
- Lift the foil sheet.

Step 9



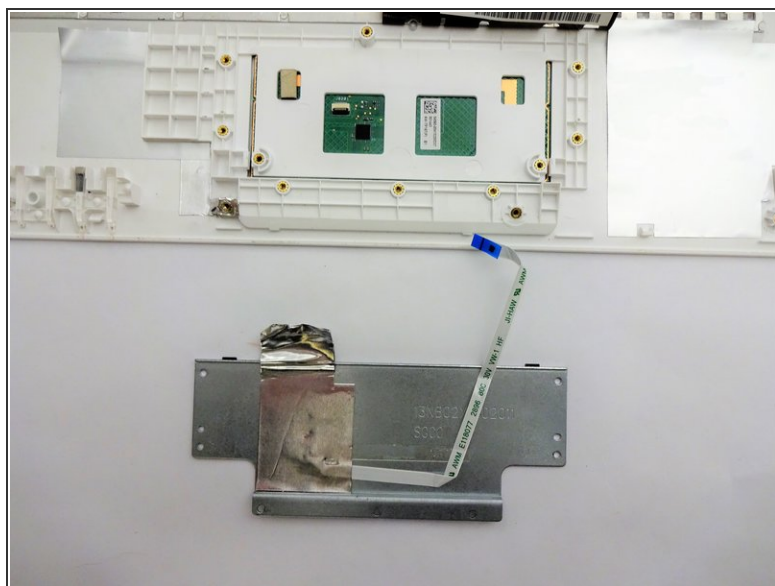
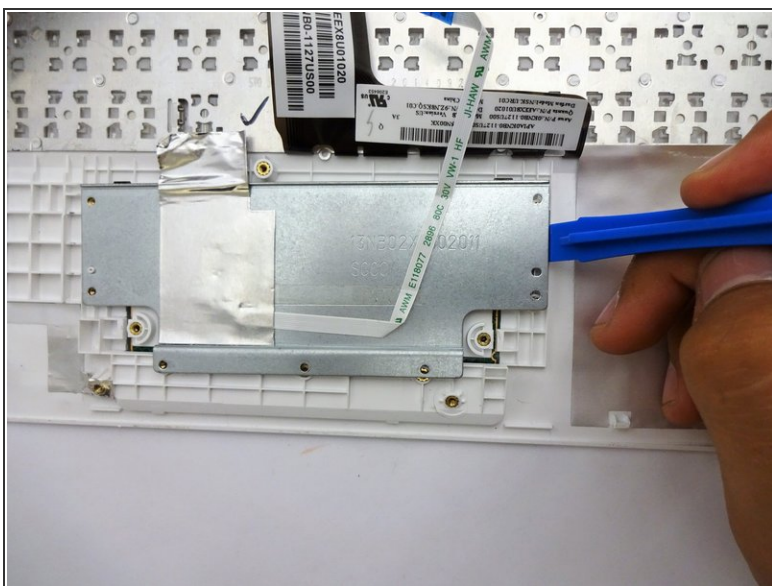
- Remove the following screws:
 - Eight 3 mm screws using Phillips screwdriver.
- ⓘ Be sure to remove the screw underneath the keyboard connector.

Step 10



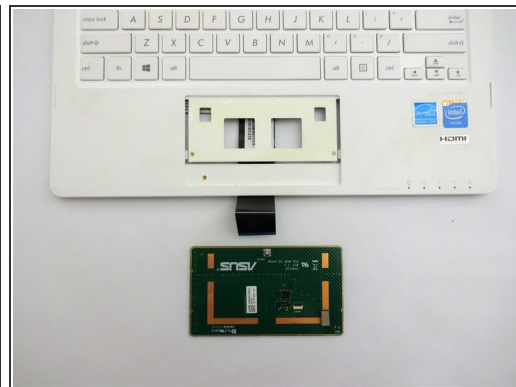
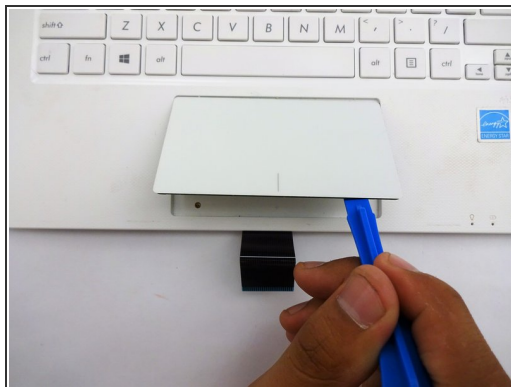
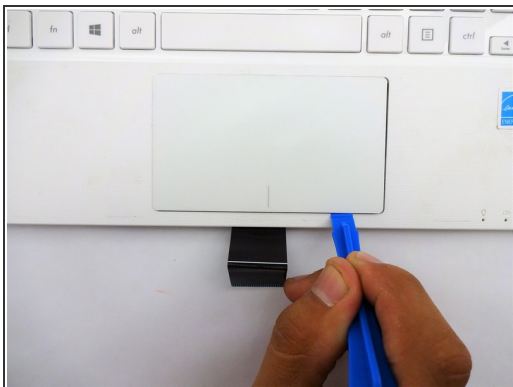
- Remove the following screws:
 - Two 2 mm screws using a Phillips #00 screwdriver.

Step 11



- Using a plastic spudger, remove the metal plate.

Step 12



- Flip the keyboard over.
 - Using a plastic spudger, pry the track pad off the plastic piece underneath.
- i** Don't be afraid to use some force in this step because the track pad and the plastic piece are glued together.

To reassemble your device, follow these instructions in reverse order.