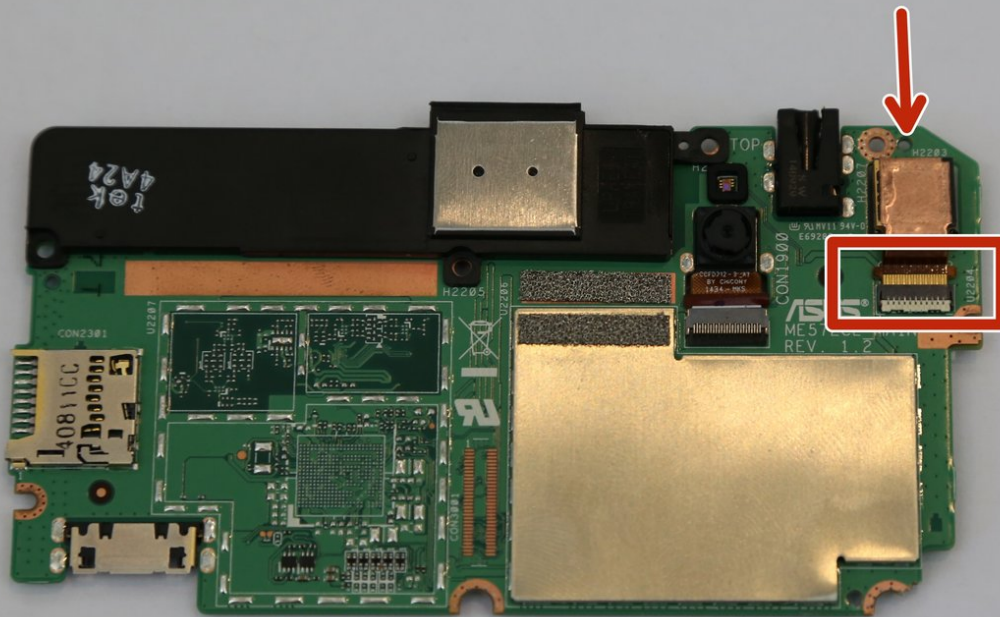




ASUS MeMO Pad 7 (ME572C) Rear Camera Replacement

Replacing the rear camera for a Asus MeMO Pad 7 to get to it to work again

Written By: Efe Guldogan



INTRODUCTION

This guide will show you how to replace the rear camera for a Asus MeMO Pad 7. If you try to take a picture from the rear camera and it is not working at all, this guide will help to replace your rear camera and make it work.

TOOLS:

- [Tweezers](#) (1)
 - [Spudger](#) (1)
 - [Phillips #000 Screwdriver](#) (1)
 - [iFixit Opening Tools](#) (1)
-

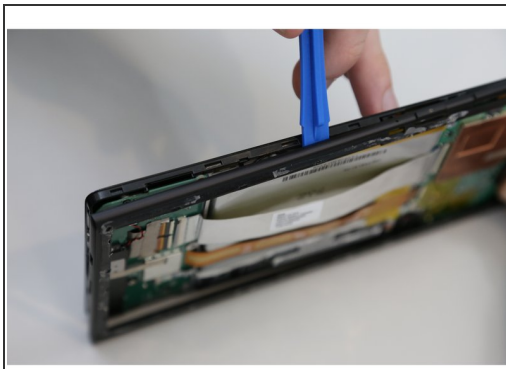
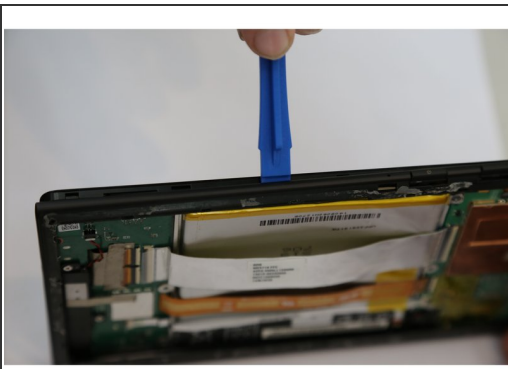
Step 1 — Rear Panel



- Make sure your device is turned off. Then with a plastic opening tool, carefully remove the back panel by carefully working your way around the perimeter.

⚠ The panel will be glued on and requires pressure to open.

Step 2



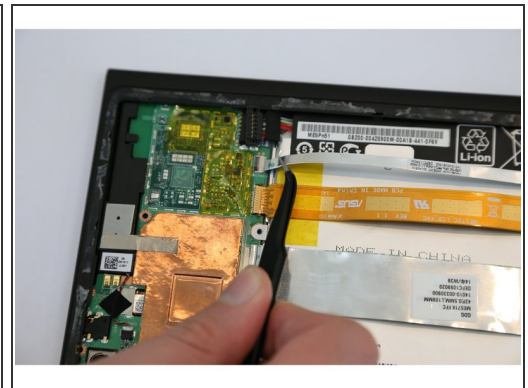
- After removing the rear panel, use a plastic opening tool to remove the frame of the tablet.
- Start in the middle of the top side and insert a plastic opening tool between the screen and the frame.
- Carefully run the plastic opening tool along all the edges of the tablet.

Step 3



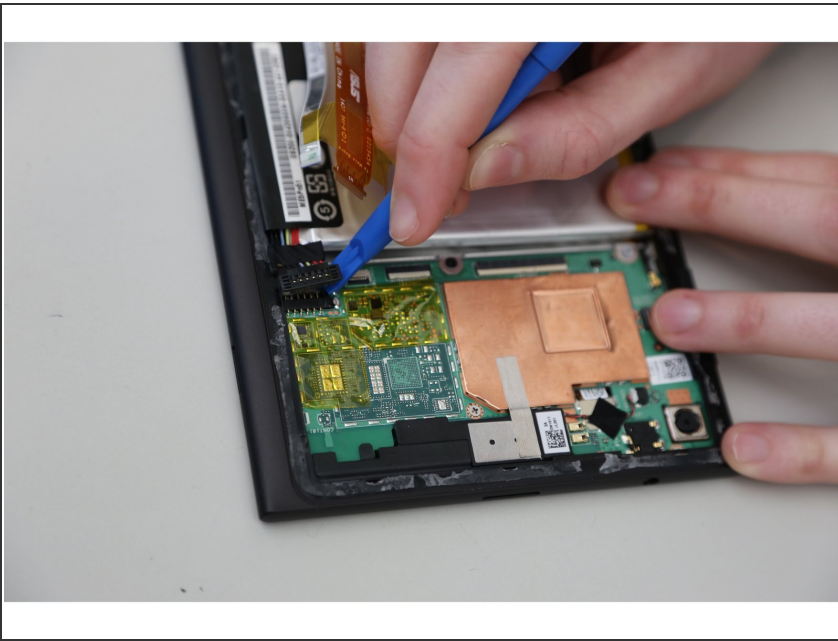
- When you take the rear panel and the frame out, place the rear panel and the frame away from the device.

Step 4 — Battery



- Disconnect the ZIF connectors to release the data cables holding the battery in. Use tweezers to do this.
- ⓘ You can also use your hand to remove ZIF connectors.
- ⚠ ZIF connectors are delicate so be careful when you are removing them.

Step 5



- Find the place where the battery connector is. Disconnect the battery connectors by carefully pulling up on them using a spudger or plastic opening tool.

Step 6

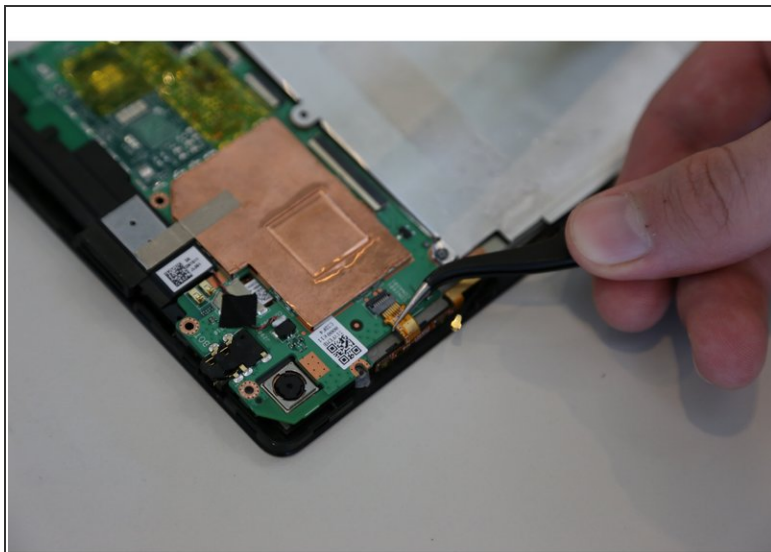


- Using a plastic opening tool carefully pry the battery loose. The battery is glued to the pad; slight pressure will be needed to remove the battery.



The casing of the battery is soft and can easily tear. Tearing can lead to the chemicals in the battery to leak out.

Step 7 — Motherboard



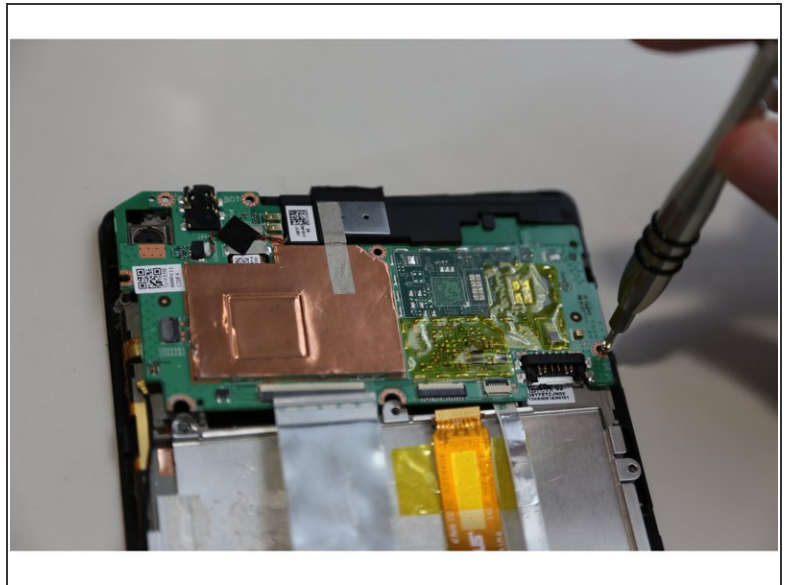
- After removing the battery from the device, locate the volume connectors on the side of the device.
- Using tweezers, carefully remove the volume connectors and place it to the side.

Step 8



- Locate the GPS antenna. Pry off the GPS antenna cable with a spudger.

Step 9



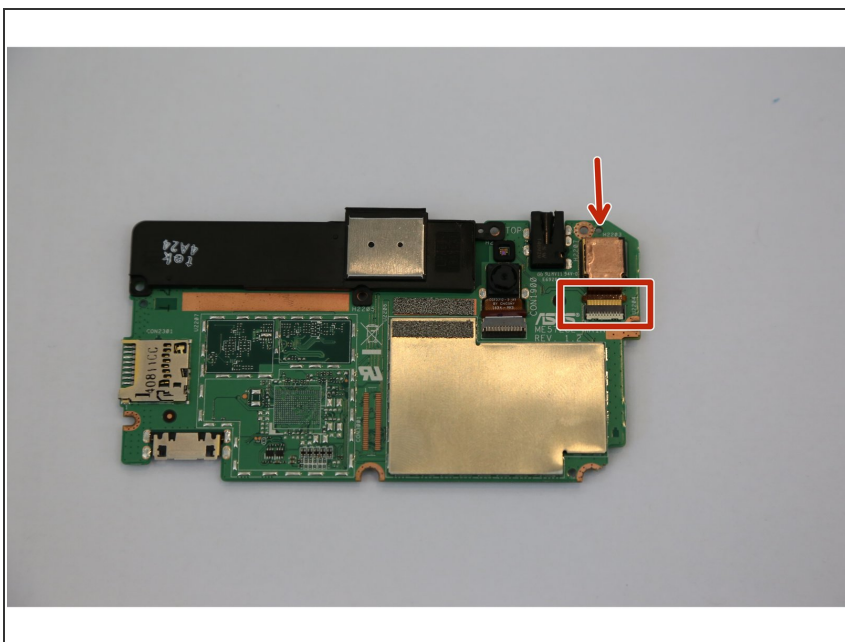
- Locate seven 2mm Phillips #0 screws attaching the motherboard to the pad. Remove the screws with a Phillips #000 screwdriver.
- ☑ Place your screws somewhere you will remember they are at.

Step 10



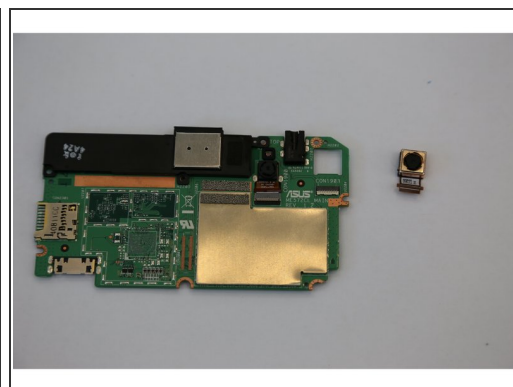
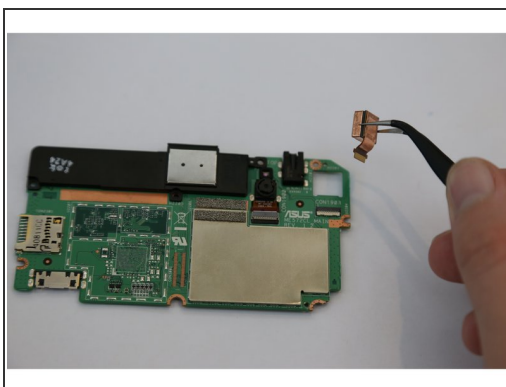
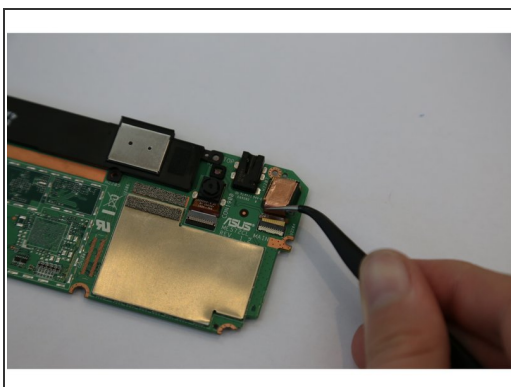
- Once all the screws are taken out, you can remove the motherboard. Carefully, take the motherboard out with a plastic opening tool.

Step 11 — Rear Camera



- Flip the motherboard and find the place where the rear camera connector is.

Step 12



- Using tweezers, carefully remove the rear camera connectors and place it to the side.

To reassemble your device, follow these instructions in reverse order.