



ASUS MeMo Pad FHD10 Battery Replacement

Short and simple guide on how to replace battery in Memo Pad FHD 10 ASUS tablet.

Written By: Dmitry



INTRODUCTION

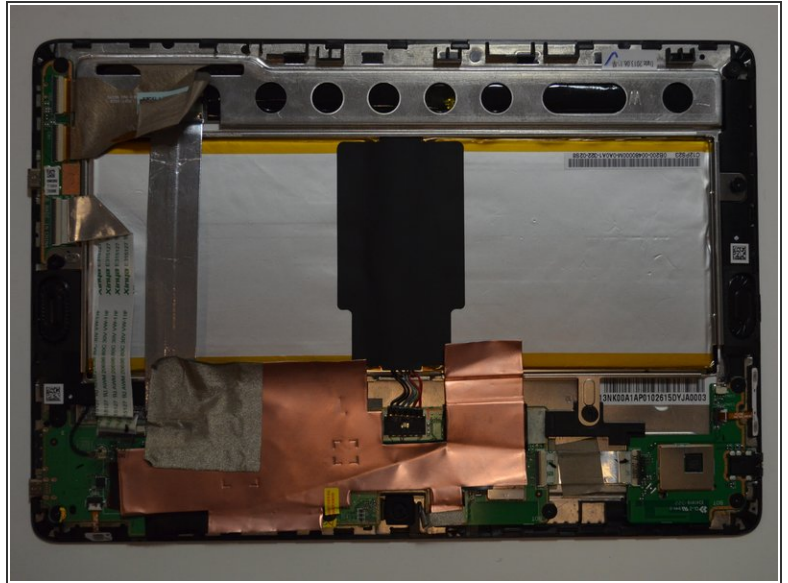
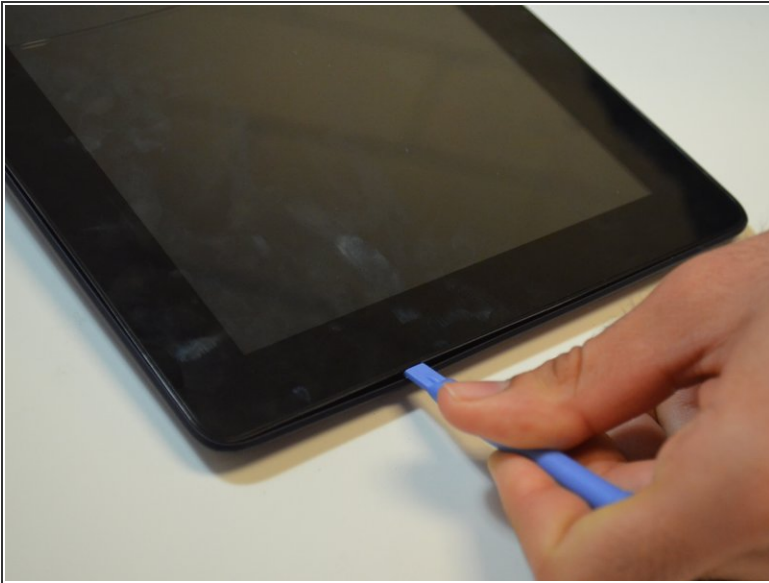
This guide is for battery's replacement. The guide follows a step-by-step sequence to take out the back panel, unplug cables and replace the batter. The battery type is 6760mAh Li-polymer with 10 hours battery life.




TOOLS:

- [iFixit Opening Tools](#) (1)
 - [Tweezers](#) (1)
 - [Phillips #00 Screwdriver](#) (1)
-

Step 1 — Battery

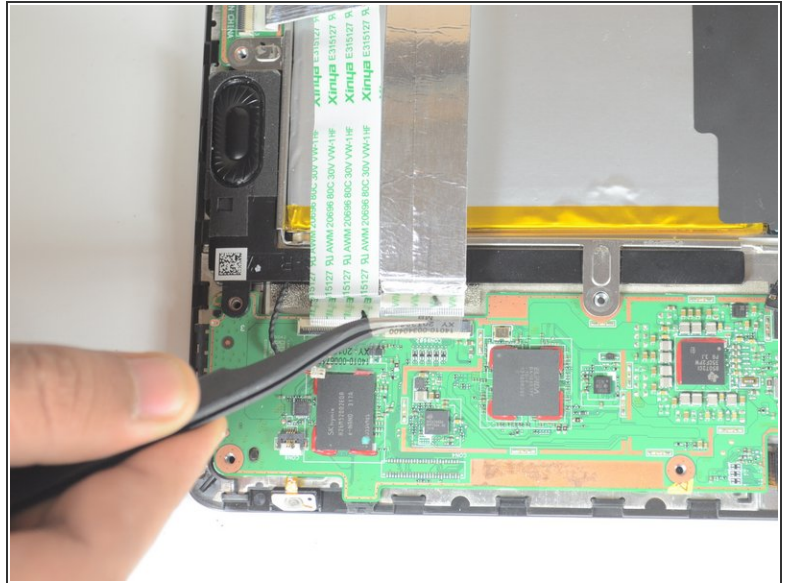
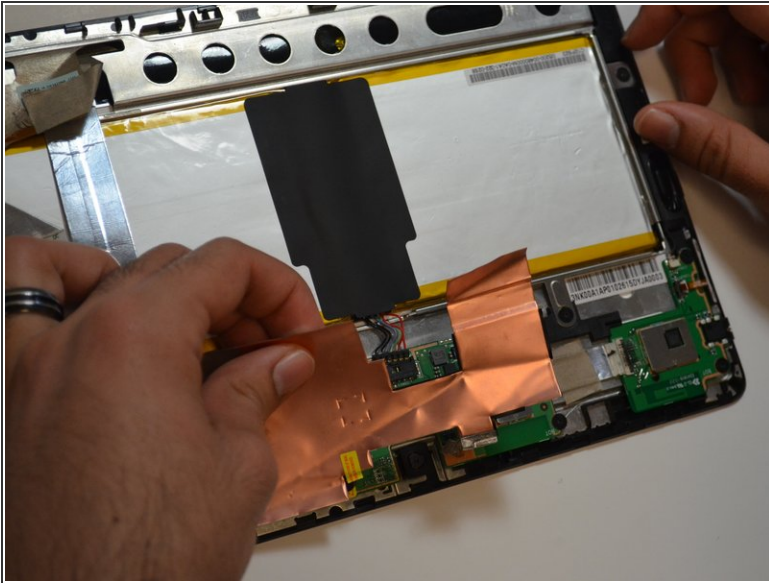


- Plug out the charger and pull out the memory card if connected as a preliminary step.

 Make sure that the device is turned off as a precaution.

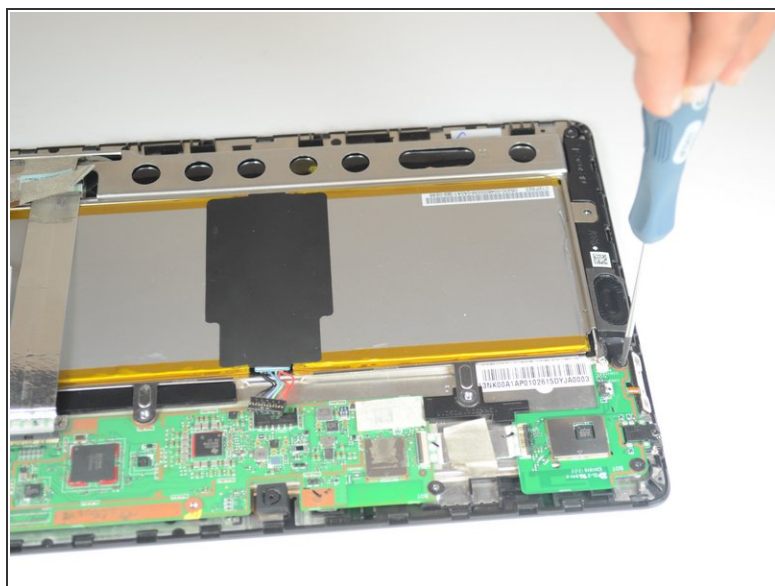
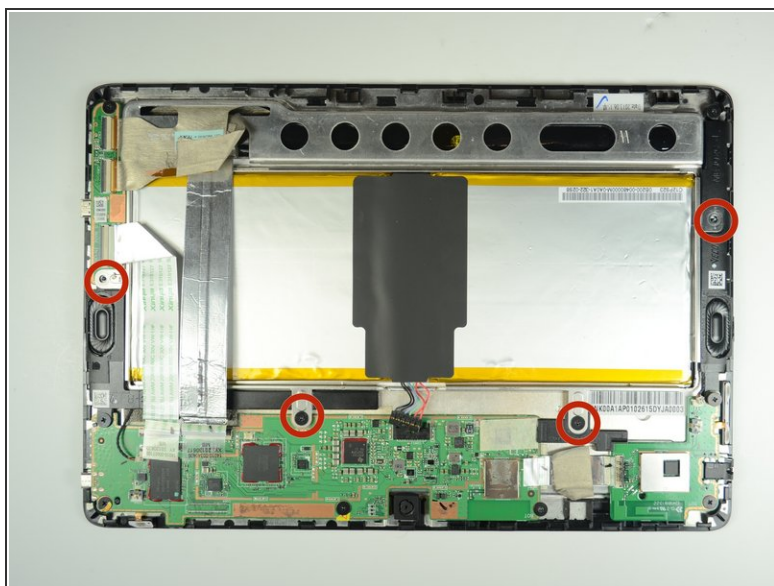
- Wedge the plastic opening tool between the front and back cover on every side as shown on the photos.
- Slide the plastic opening tool back and forth to make sure that the back cover is disconnected.
- Remove the back cover.

Step 2



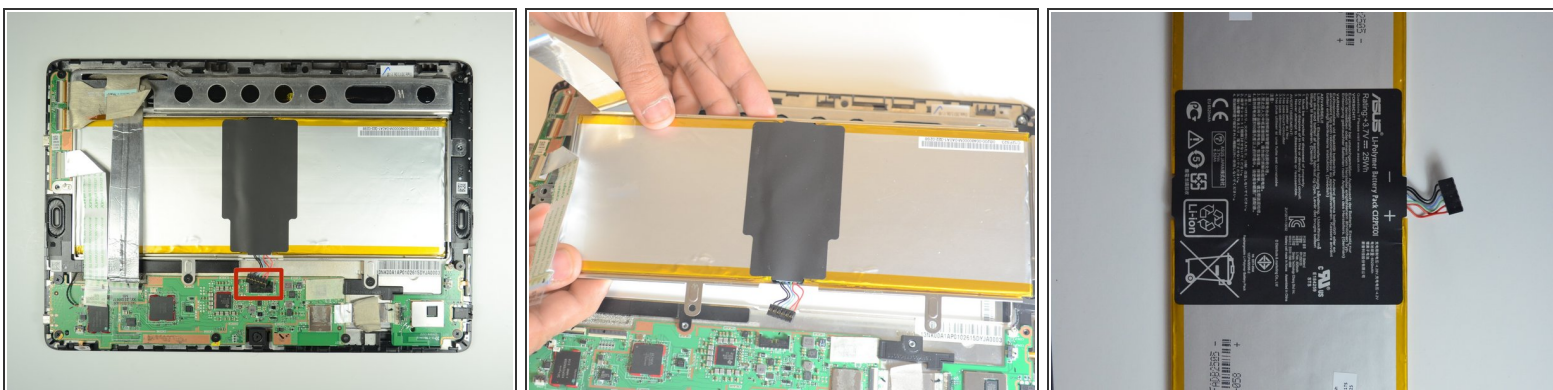
- Remove the protective copper sticker and all duct tapes fixed on the device.
 - Locate the two ribbon cables attached to the motherboard. Using tweezers, remove the cables away from their sliders.
- ⚠ Use the tweezers accurately as shown on the images, and apply a minimum force to remove the cables to prevent any damage.

Step 3



- Unscrew four #00 Philips 2 mm screws holding the battery tray in place.
- ⓘ All screws removed from the device in this guide and accompanying guides are the same, so continue to use the #00 Philips head screwdriver.

Step 4



- Locate the battery cable attached to the motherboard. Remove the cable gently using tweezers, the same way applied before for the ribbon cables.
- Now, you are able to remove the battery from the device. You can then separate the metal frame located at the back of the battery by gently wedging the plastic open tool in between the two parts, and slide it back and forth until the metal frame is removed.
- ⓘ When you separate the battery from the metal frame, be sure to hold it tight on the center by one hand, since the whole battery consists of two smaller batteries joined together.

To reassemble your device, follow these instructions in reverse order.