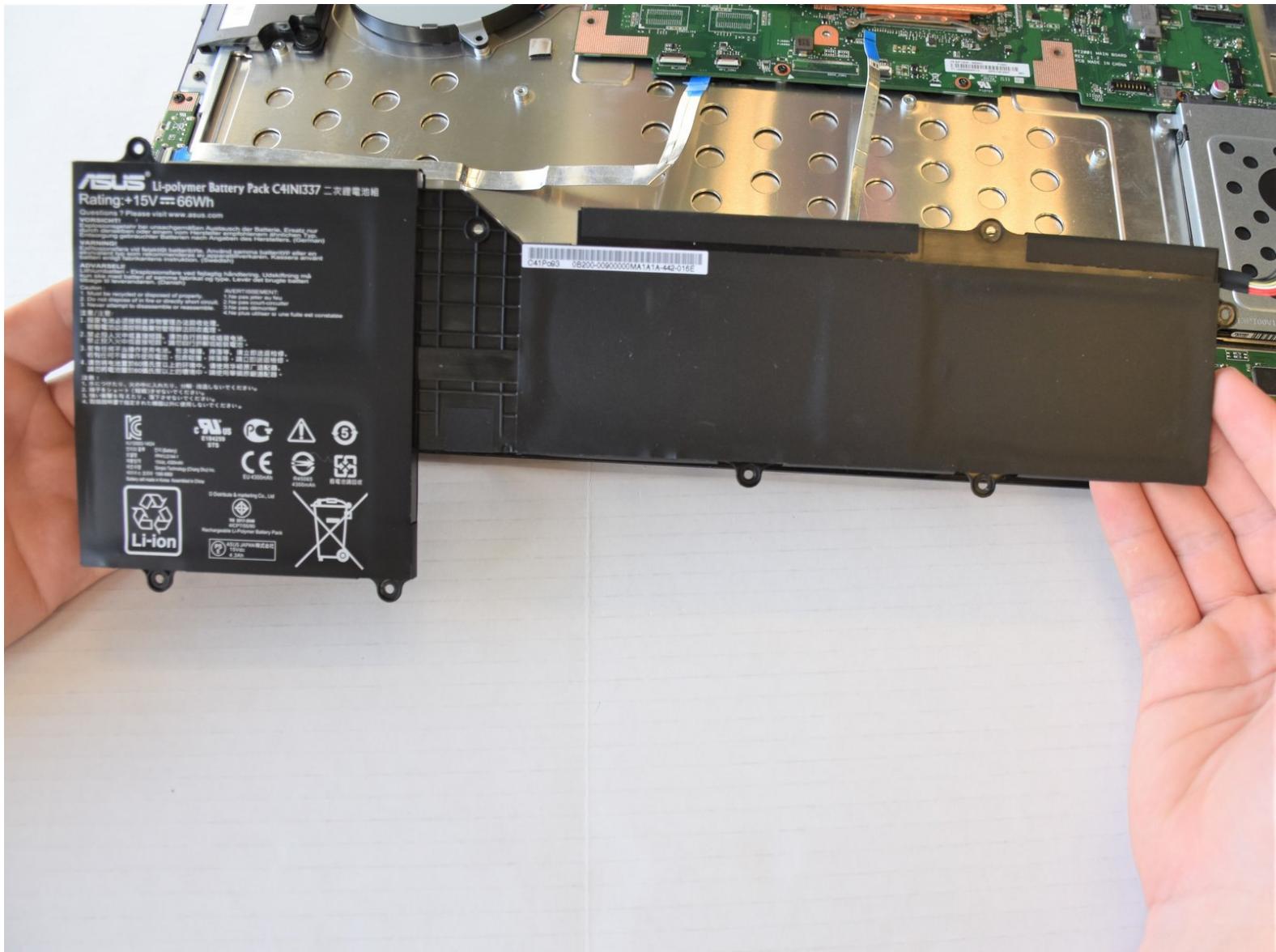




# ASUS Portable AiO PT2001 Battery Replacement

How to replace the battery in an ASUS Portable AiO PT2001.

Written By: Runjia Chen



---

## INTRODUCTION

This guide demonstrates how to remove the battery, one of the most essential components of the device.

---

### TOOLS:

- [Spudger](#) (1)
  - [iFixit Opening Tools](#) (2)  
*At least one wide plastic opening tool.*
  - [Phillips #1 Screwdriver](#) (1)
-

## Step 1 — Back Panel



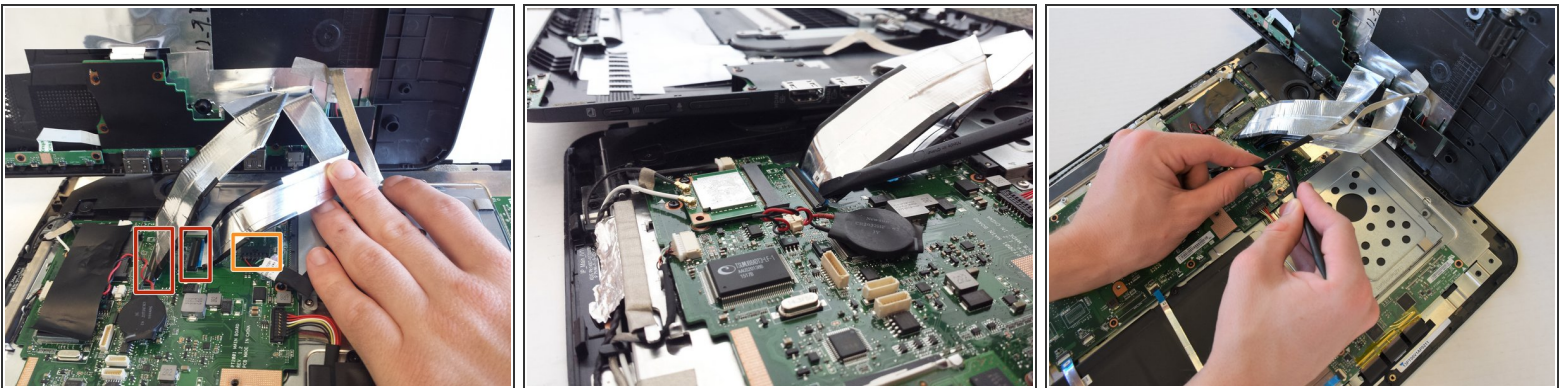
- Remove the grey scuff guard at the bottom of the PC by pressing down on it, and pulling it away.
- Lift the hinge and remove the grey rubber tabs on either side of the PC's model information.
- Remove the two 7.62mm Phillips #1 screws beneath the rubber tabs under the hinge and the four 7.62mm Phillips #1 screws where the scuff guard was removed.
- Remove the two 4.74mm Phillips #1 screws under the hinge (near the hinge joints) and a 4.74mm Phillips #1 screw under the handle.

## Step 2



- Use 1-2 plastic opening tools or nylon spudgers to firmly pry open the back panel.
- ⓘ We recommend that you start prying the panel where the scuff guard was removed.
- ⓘ Prying the back panel will cause loud popping noises. This is just the sound of the clips that hold the back panel to the PC popping off.
- ⚠ Using excess force while prying can break the clips that hold the back panel and can damage the ports on the side of the PC.

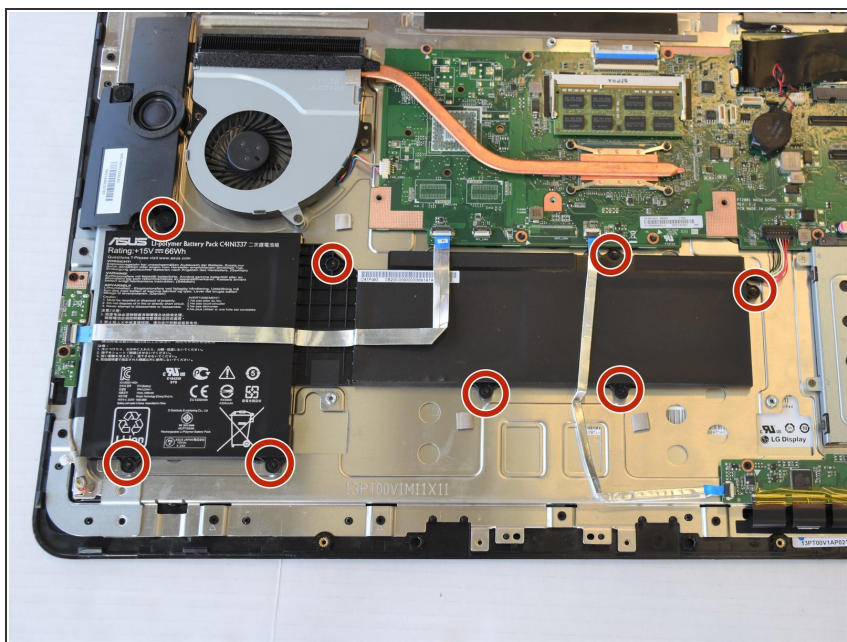
## Step 3



- Disconnect the three cables connecting the back panel ports to the motherboard.
- Flip up the locking latch holding the two ribbon cables with a plastic opening tool and pull the cables out.
- Gently wiggle the third connector out of its socket.

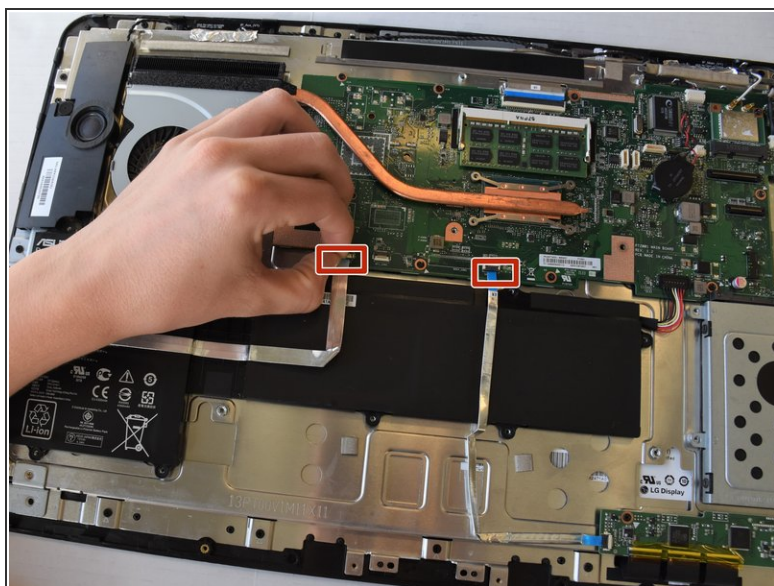


## Step 4 — Battery



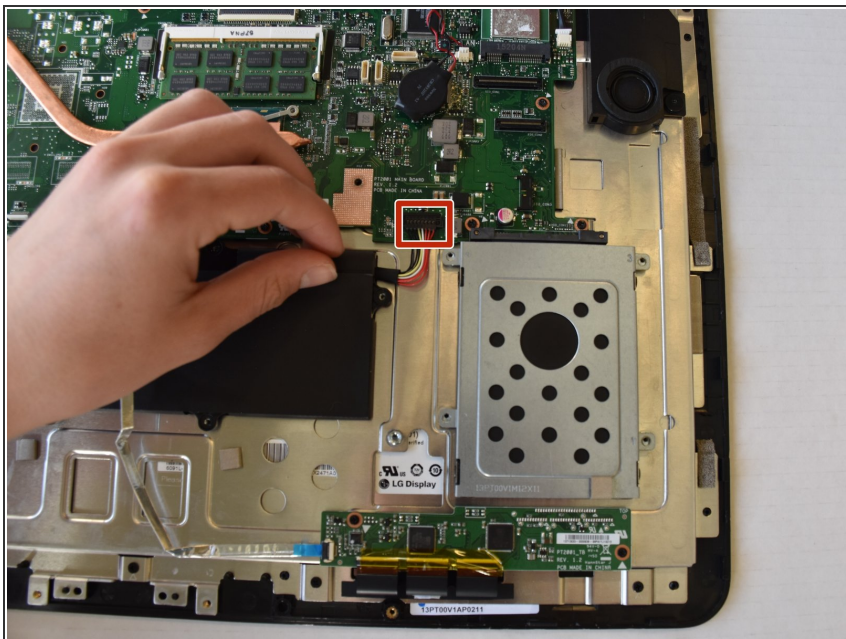
- Remove the eight 3.5 mm Phillips screws that secure the battery.

## Step 5



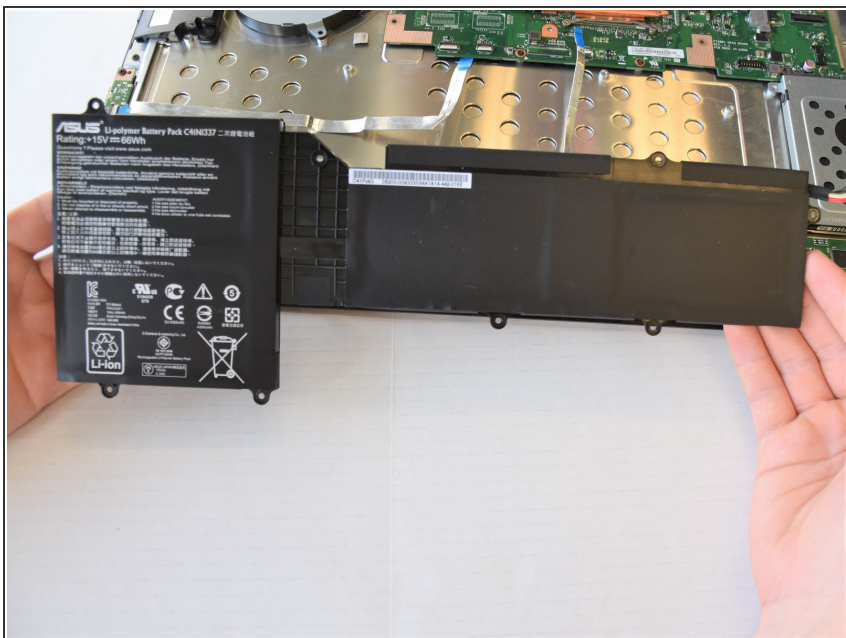
- Disconnect the wires by pulling on the tab. Disconnecting these wires will clear the way for removing the battery.

## Step 6



- Unplug the battery's connector from the motherboard.

## Step 7



- Pull the battery out. Be careful not to break the cables on top.

To reassemble your device, follow these instructions in reverse order.