



ASUS Portable AiO PT2001 Hard Drive Replacement

How to replace the hard drive in an ASUS Portable AiO PT2001.

Written By: Runjia Chen



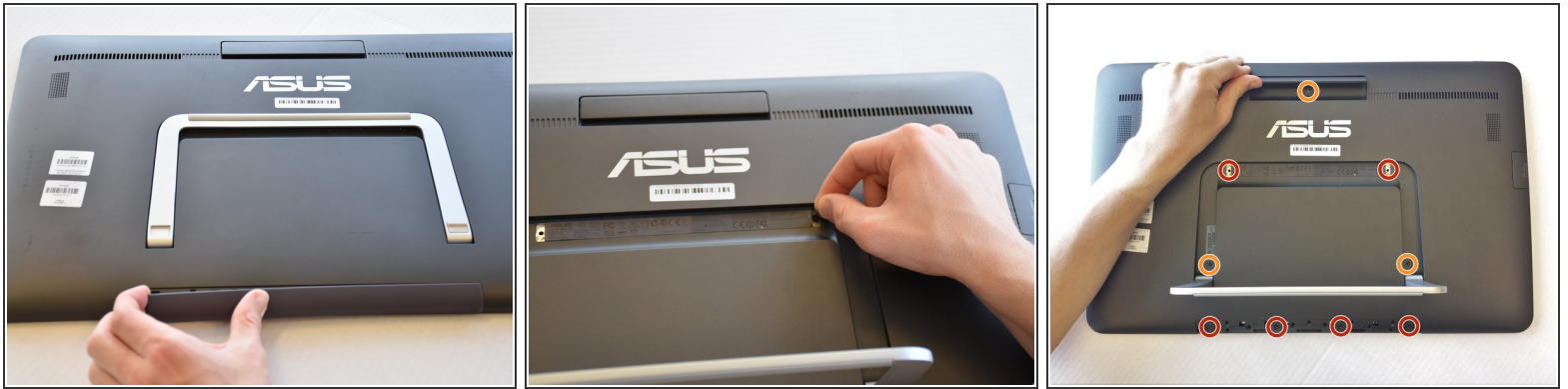
INTRODUCTION

We will replace the hard drive in this guide. The only necessary tools are a screwdriver and a spudger/plastic opening tool.

TOOLS:

- [Spudger](#) (1)
 - [iFixit Opening Tools](#) (2)
At least one wide plastic opening tool.
 - [Phillips #1 Screwdriver](#) (1)
-

Step 1 — Back Panel



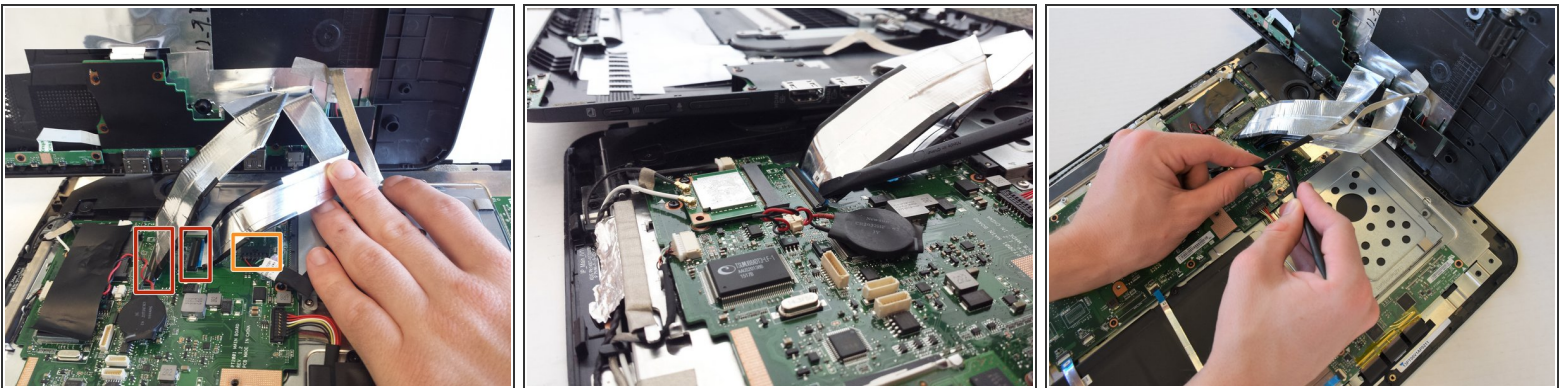
- Remove the grey scuff guard at the bottom of the PC by pressing down on it, and pulling it away.
- Lift the hinge and remove the grey rubber tabs on either side of the PC's model information.
- Remove the two 7.62mm Phillips #1 screws beneath the rubber tabs under the hinge and the four 7.62mm Phillips #1 screws where the scuff guard was removed.
- Remove the two 4.74mm Phillips #1 screws under the hinge (near the hinge joints) and a 4.74mm Phillips #1 screw under the handle.

Step 2



- Use 1-2 plastic opening tools or nylon spudgers to firmly pry open the back panel.
- ⓘ We recommend that you start prying the panel where the scuff guard was removed.
- ⓘ Prying the back panel will cause loud popping noises. This is just the sound of the clips that hold the back panel to the PC popping off.
- ⚠ Using excess force while prying can break the clips that hold the back panel and can damage the ports on the side of the PC.

Step 3



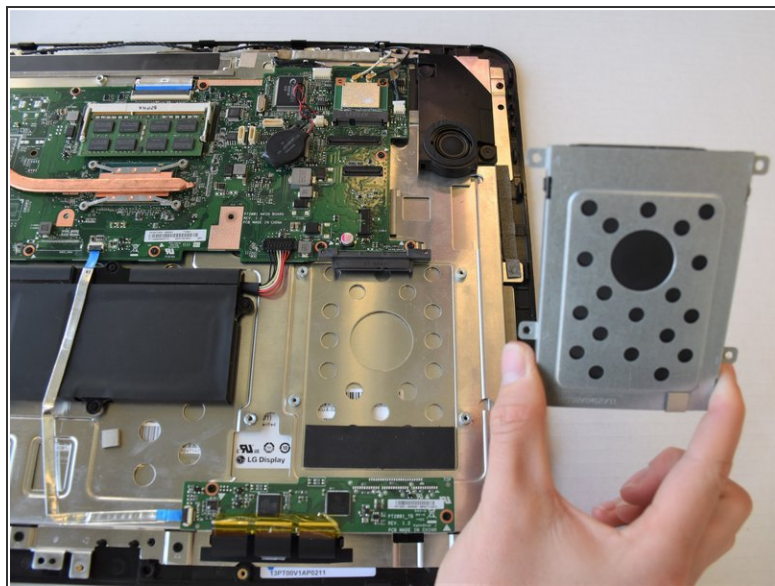
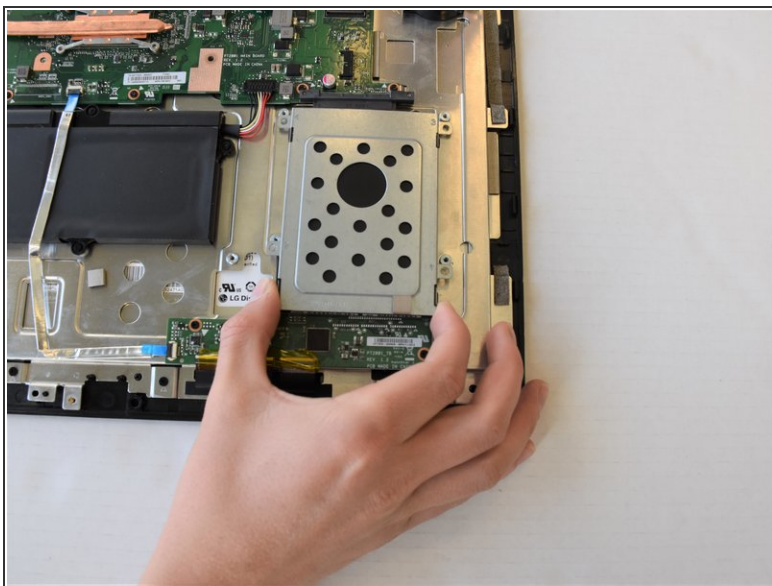
- Disconnect the three cables connecting the back panel ports to the motherboard.
- Flip up the locking latch holding the two ribbon cables with a plastic opening tool and pull the cables out.
- Gently wiggle the third connector out of its socket.

Step 4 — Hard Drive



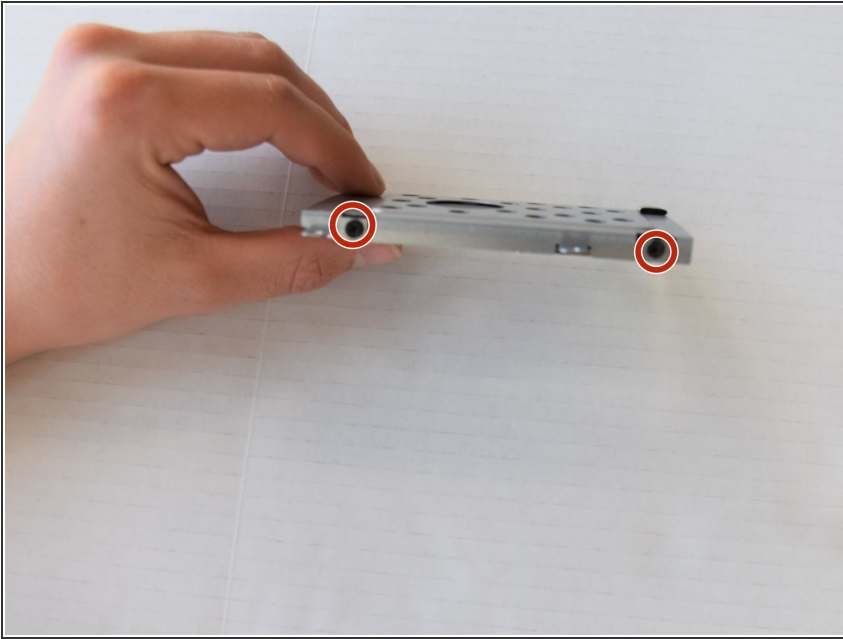
- Remove the four 5.0 mm Phillips #1 screws on the outer casing of the hard drive.

Step 5



- Gently pull the hard drive away to disconnect it from the motherboard.

Step 6



- Remove the four 3.5 mm Phillips #1 screws on the edges of the outer casing, two on each side.

Step 7



- Separate the hard drive from the casing.

To reassemble your device, follow these instructions in reverse order.