



ASUS Portable AiO PT2001 Speaker Replacement

How to replace the speakers in an ASUS Portable AiO PT2001.

Written By: Erich Fenczik Warnock



INTRODUCTION

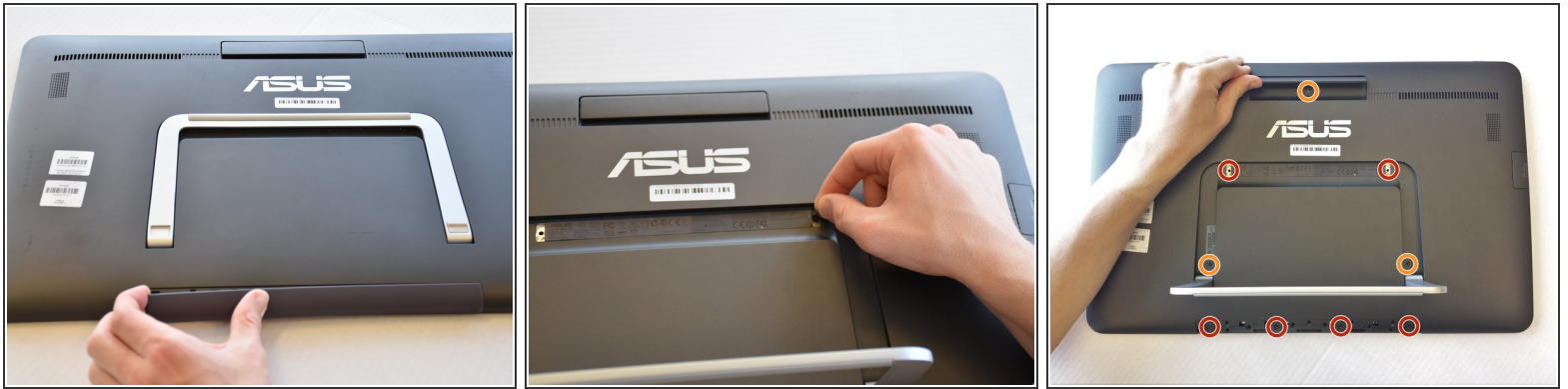
This guide will demonstrate how to remove the pair of speakers. This process is straightforward, and no special tools are necessary.

TOOLS:

- [Spudger](#) (1)
- [Phillips #1 Screwdriver](#) (1)
- [iFixit Opening Tools](#) (2)

At least one wide plastic opening tool.

Step 1 — Back Panel



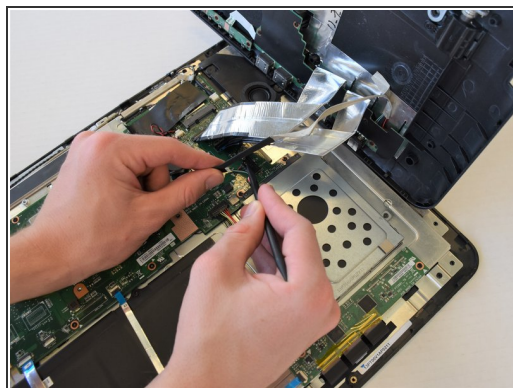
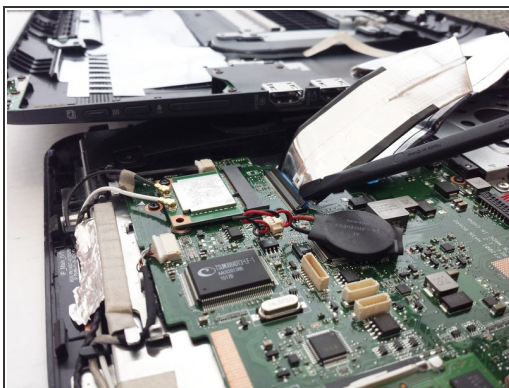
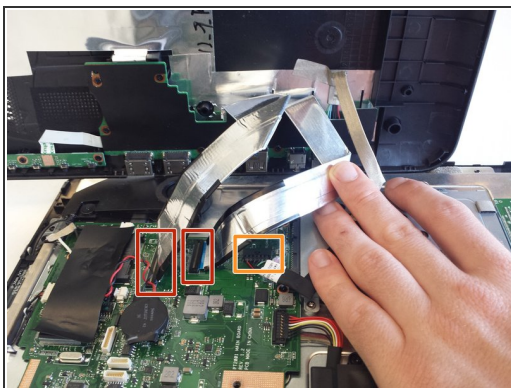
- Remove the grey scuff guard at the bottom of the PC by pressing down on it, and pulling it away.
- Lift the hinge and remove the grey rubber tabs on either side of the PC's model information.
- Remove the two 7.62mm Phillips #1 screws beneath the rubber tabs under the hinge and the four 7.62mm Phillips #1 screws where the scuff guard was removed.
- Remove the two 4.74mm Phillips #1 screws under the hinge (near the hinge joints) and a 4.74mm Phillips #1 screw under the handle.

Step 2



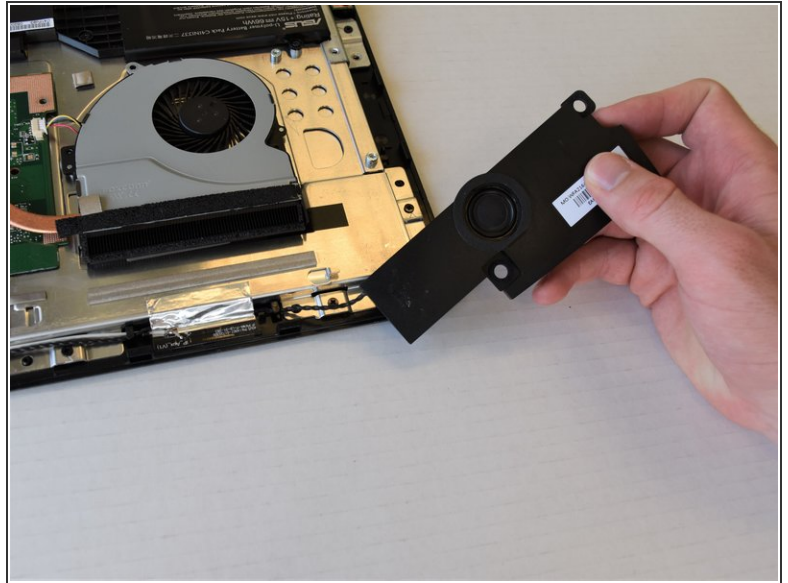
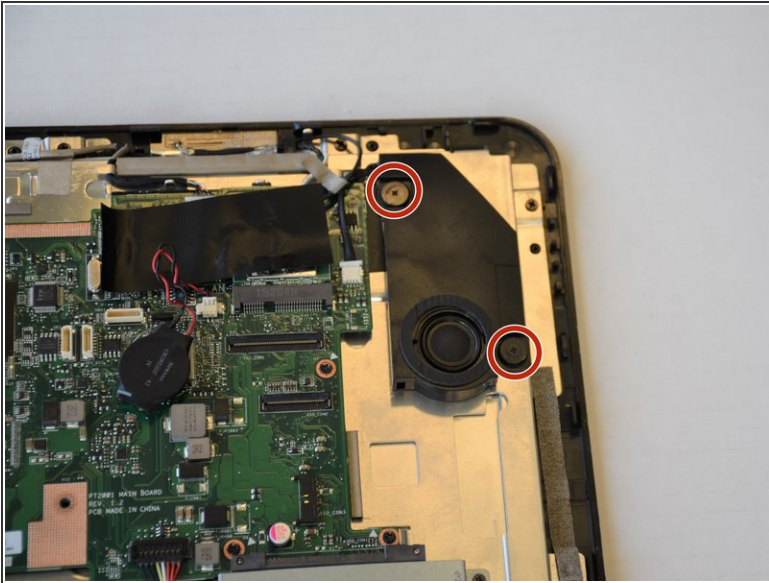
- Use 1-2 plastic opening tools or nylon spudgers to firmly pry open the back panel.
- ⓘ We recommend that you start prying the panel where the scuff guard was removed.
- ⓘ Prying the back panel will cause loud popping noises. This is just the sound of the clips that hold the back panel to the PC popping off.
- ⚠ Using excess force while prying can break the clips that hold the back panel and can damage the ports on the side of the PC.

Step 3



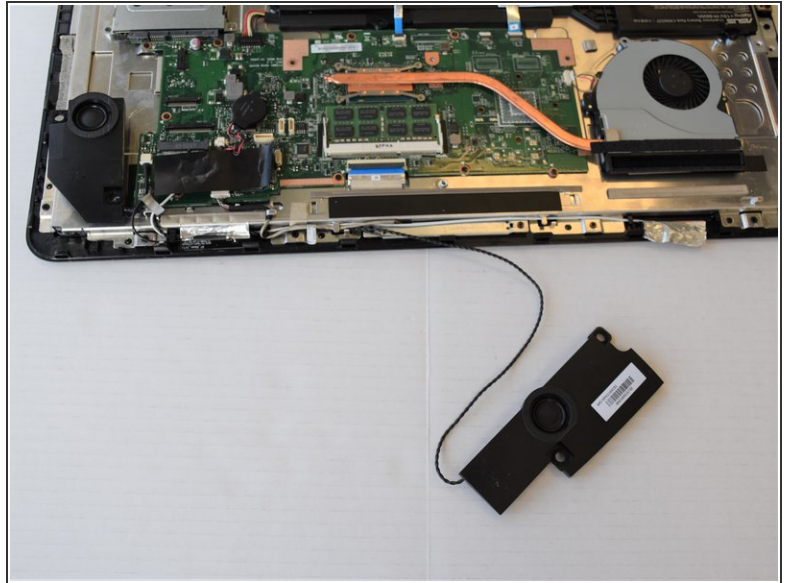
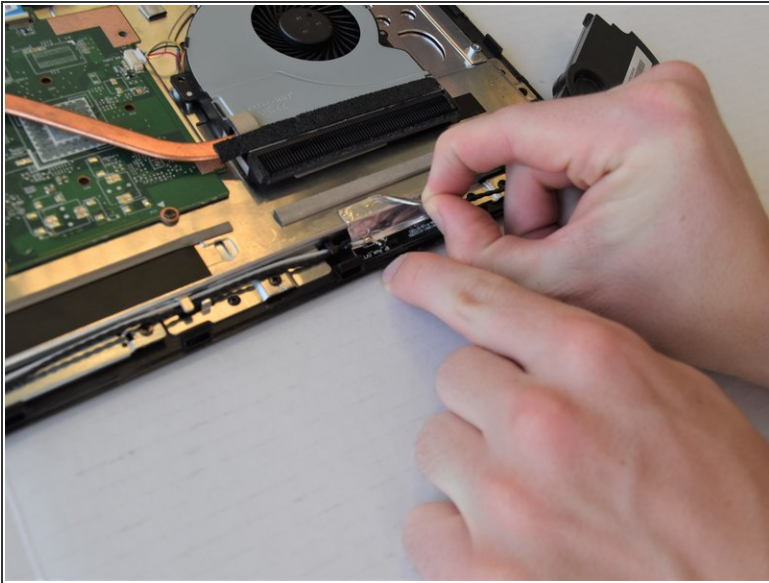
- Disconnect the three cables connecting the back panel ports to the motherboard.
- Flip up the locking latch holding the two ribbon cables with a plastic opening tool and pull the cables out.
- Gently wiggle the third connector out of its socket.

Step 4 — Speaker



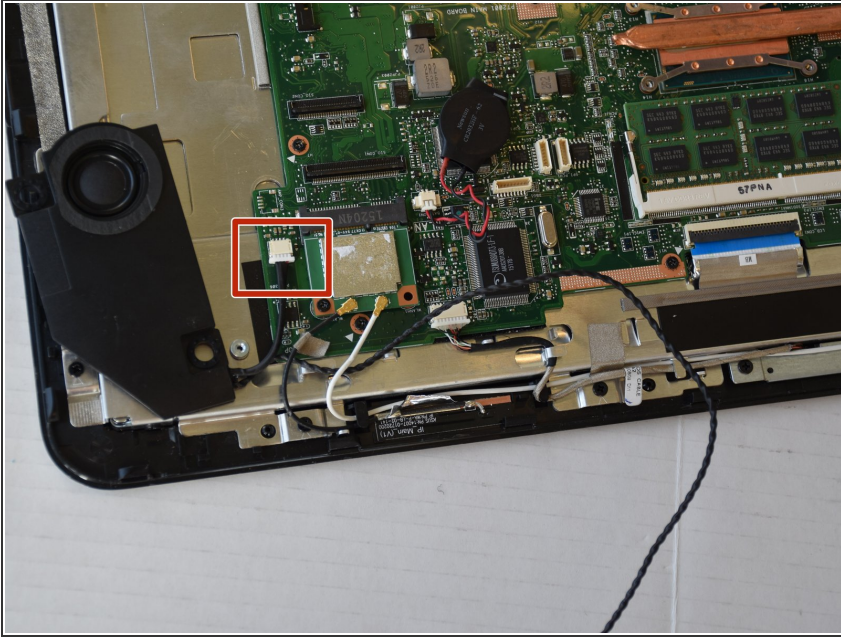
- The two in-house speakers are located near the sides of the device with the motherboard in between.
- Remove the two 2.35 mm Phillips #1 screws from each speaker.

Step 5



- The two speakers are attached to each other with a cord that is threaded along the side of the casing. Gently pull the wire out
- ⓘ The cord is secured under two pieces of tape with multiple other wires. Make sure that you only remove the wire connecting the speakers.
- ☑ Keep in mind that when replacing the wires, you will need to secure the tape again. Accordingly, be careful not to tear the tape when peeling it.

Step 6



- Pull the cord attached to the speaker out of the motherboard

To reassemble your device, follow these instructions in reverse order.