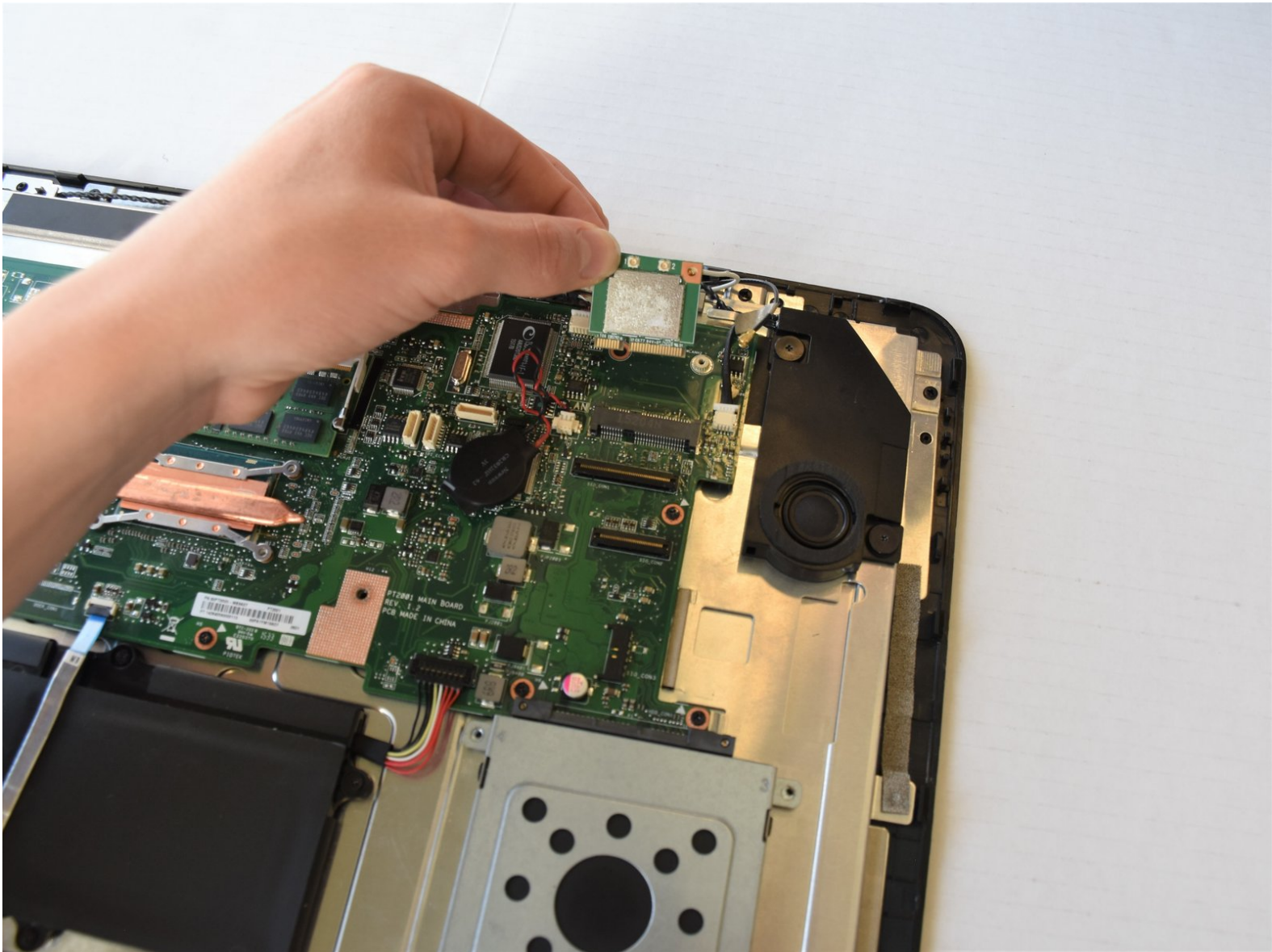




ASUS Portable AiO PT2001 Wireless Card Replacement

How to replace a wireless card in the ASUS Portable AiO PT2001.

Written By: Erich Fenczik Warnock



INTRODUCTION

This guide will show you how to remove the wireless card in a few easy steps.

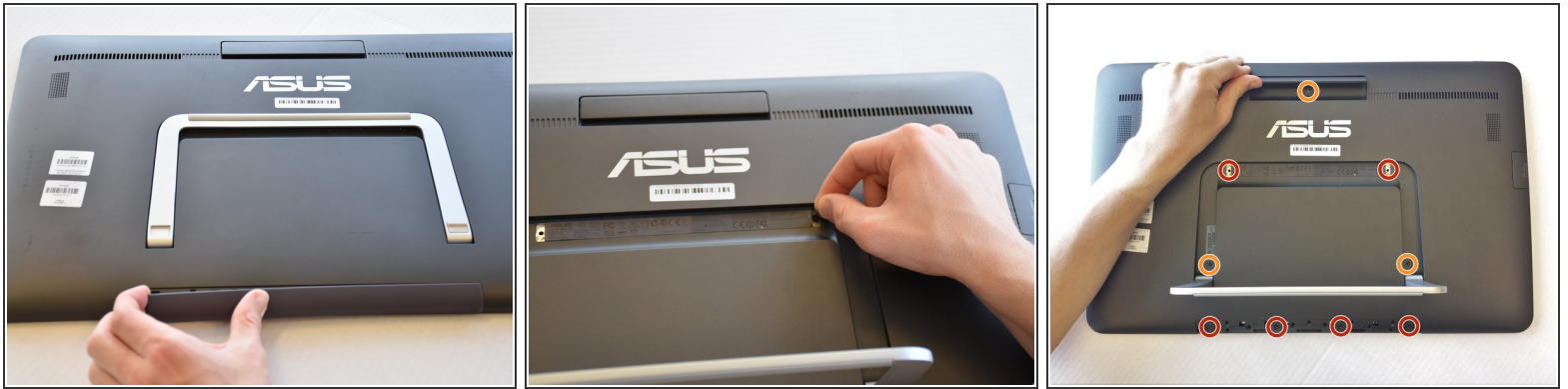


TOOLS:

- [Spudger](#) (1)
- [Phillips #1 Screwdriver](#) (1)
- [iFixit Opening Tools](#) (2)

At least one wide plastic opening tool.

Step 1 — Back Panel



- Remove the grey scuff guard at the bottom of the PC by pressing down on it, and pulling it away.
- Lift the hinge and remove the grey rubber tabs on either side of the PC's model information.
- Remove the two 7.62mm Phillips #1 screws beneath the rubber tabs under the hinge and the four 7.62mm Phillips #1 screws where the scuff guard was removed.
- Remove the two 4.74mm Phillips #1 screws under the hinge (near the hinge joints) and a 4.74mm Phillips #1 screw under the handle.

Step 2



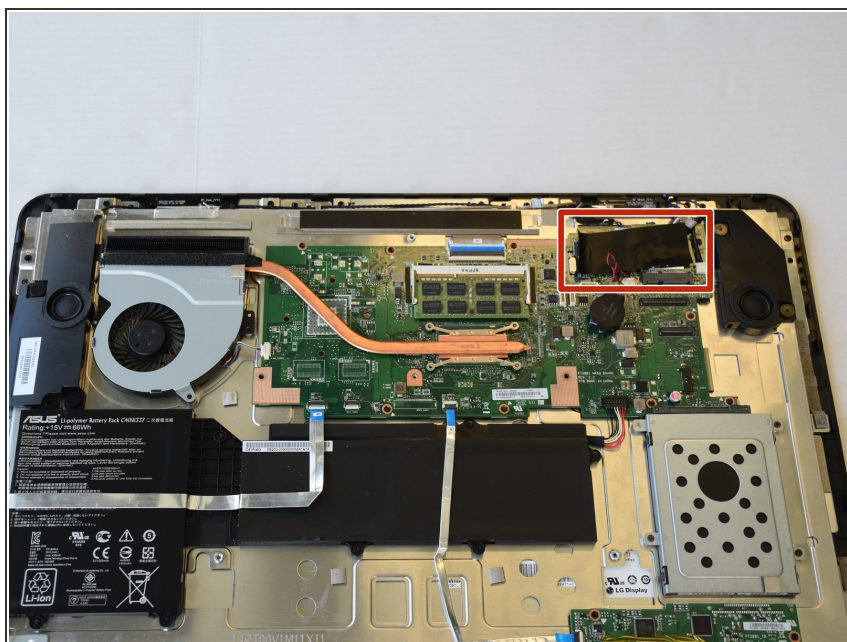
- Use 1-2 plastic opening tools or nylon spudgers to firmly pry open the back panel.
- ⓘ We recommend that you start prying the panel where the scuff guard was removed.
- ⓘ Prying the back panel will cause loud popping noises. This is just the sound of the clips that hold the back panel to the PC popping off.
- ⚠ Using excess force while prying can break the clips that hold the back panel and can damage the ports on the side of the PC.

Step 3



- Disconnect the three cables connecting the back panel ports to the motherboard.
- Flip up the locking latch holding the two ribbon cables with a plastic opening tool and pull the cables out.
- Gently wiggle the third connector out of its socket.

Step 4 — Wireless Card



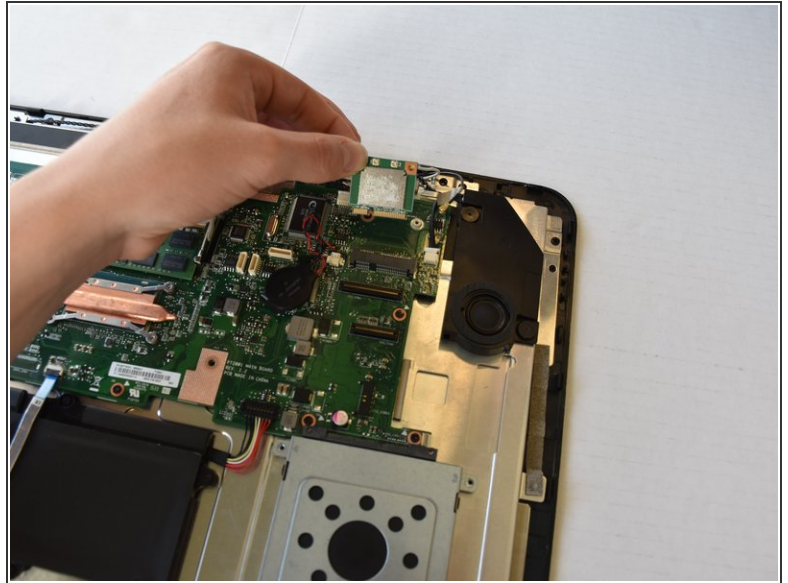
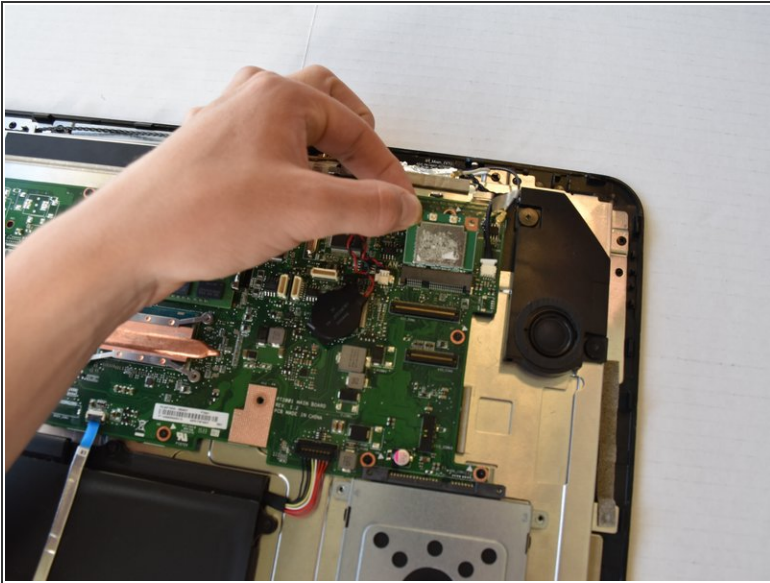
- The wireless card is on the corner of the motherboard next to the speaker. Remove the black tape to reveal the wireless card.

Step 5



- Remove the 3.5 mm Phillips #1 screw from the wireless card.
- Remove the connectors by pulling straight up on their ends.

Step 6



- Remove the wireless card from the casing by lifting up then pulling out.

 The wireless card is fragile. Be careful when pulling it out of the casing.

To reassemble your device, follow these instructions in reverse order.