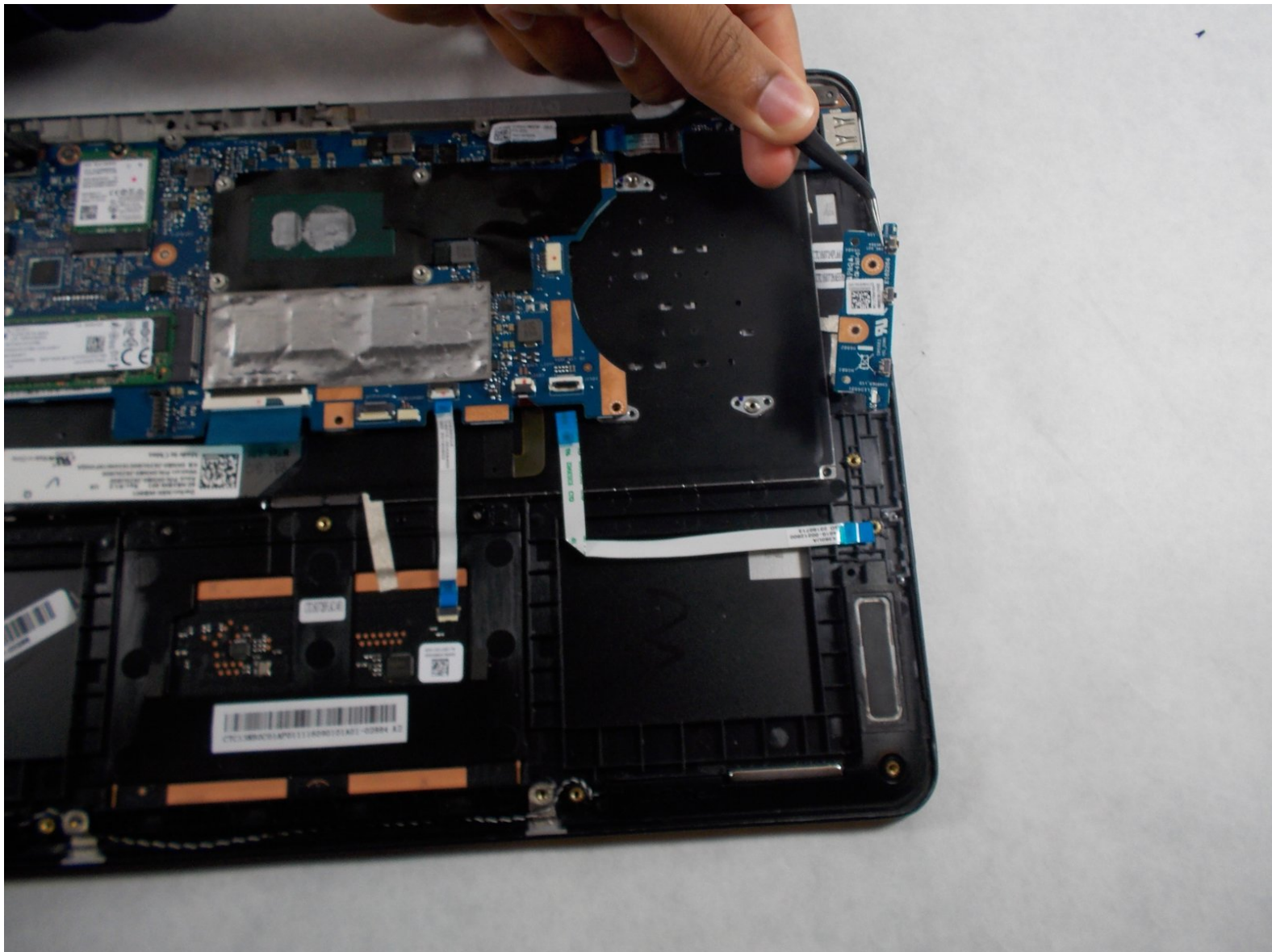




# ASUS Q324UA-BHI7T17 Power & Volume Button PCB Board Replacement

A step by step guide on how to quickly and easily replace the ASUS Q324UA-BHI7T17 power & volume PCB board.

Written By: Scott Santiago



This document was generated on 2020-02-26 07:43:59 PM (MST).

## INTRODUCTION

Sometimes a laptop will not turn on due to a broken or faulty power button PCB board. That means no information will be sent to the motherboard to turn on the laptop, however the board is also associated with the volume keys, therefore maybe it will turn on but the volume controls on the side will not work. If either of these things happen, follow this guide to replace the faulty power chip.



### TOOLS:

- [iFixit Opening Tools](#) (1)
- [Phillips #0 Screwdriver](#) (1)
- [Tweezers](#) (1)



### PARTS:

- [57Wh OEM Genuine C31N1538 Laptop Battery](#) (1)
- [ASUS Q324UA-BHI7T17 Power chip](#) (1)

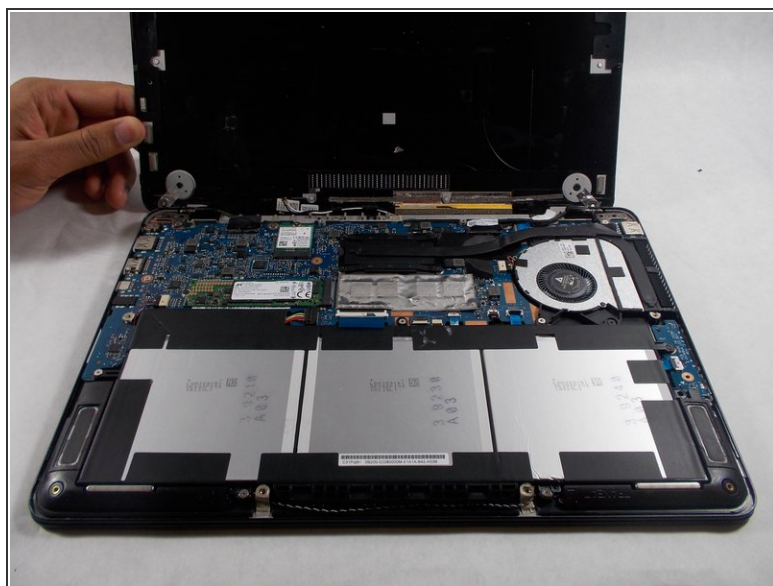
## Step 1 — Battery



- Remove all 10 Phillips screws on the backplate.

**i** All 10 screws are 0.55 inches and 20 mm in diameter.

## Step 2



- Carefully remove the backplate using the plastic opening tool.

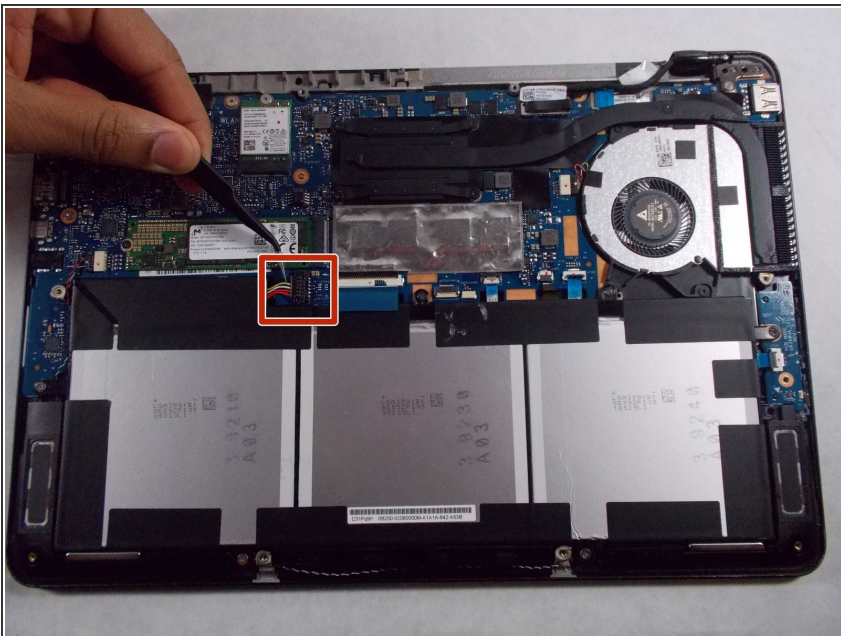


## Step 3



- Locate the battery near the bottom.

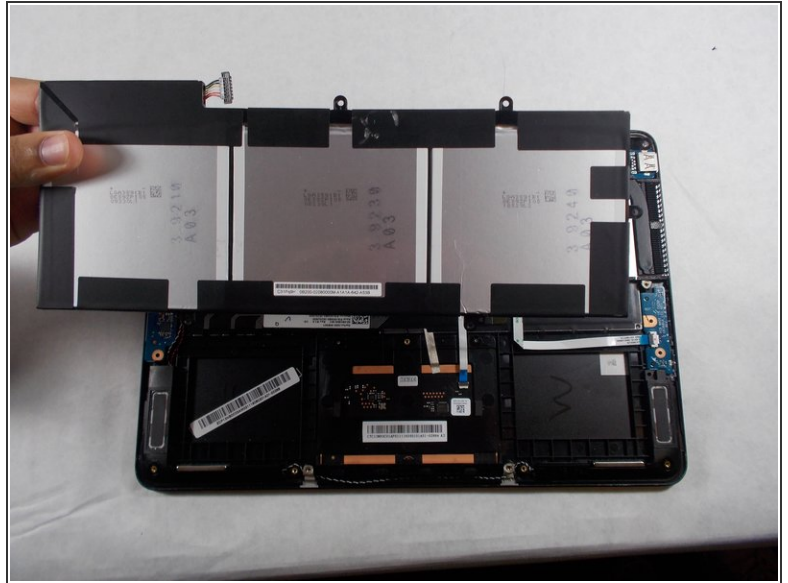
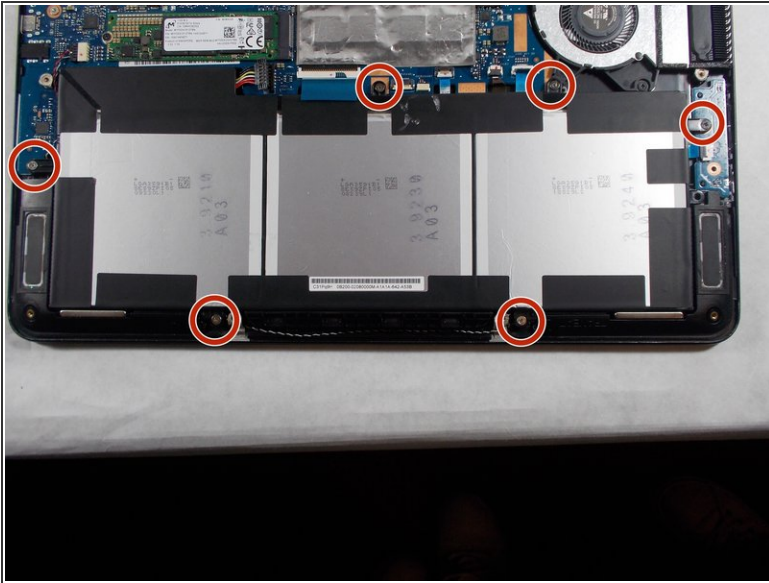
## Step 4



- Next, lift up the battery connector from the laptop in the upper left side of the battery, using tweezers or spudger.

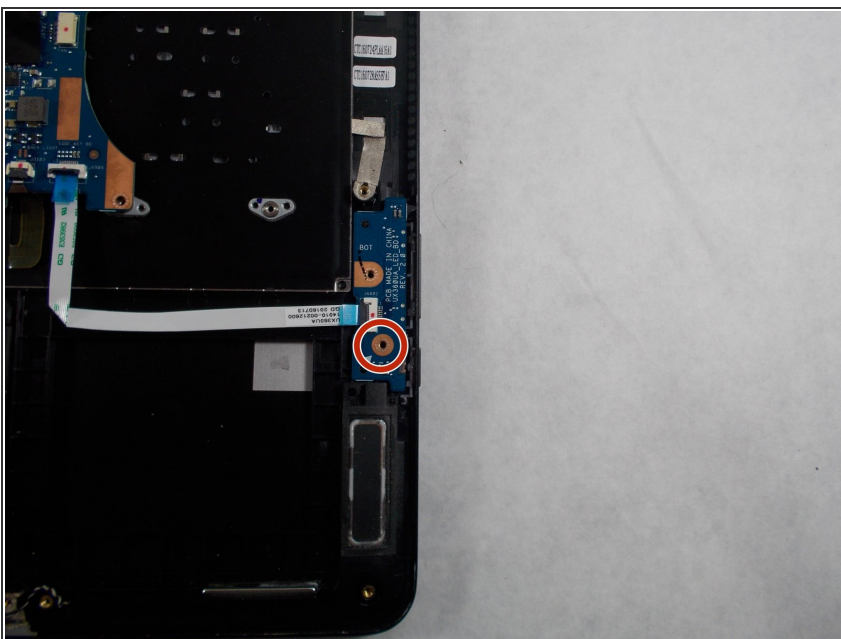
⚠ Make sure to complete this step with caution, because if the battery is not unplugged, the motherboard may shock you.

## Step 5



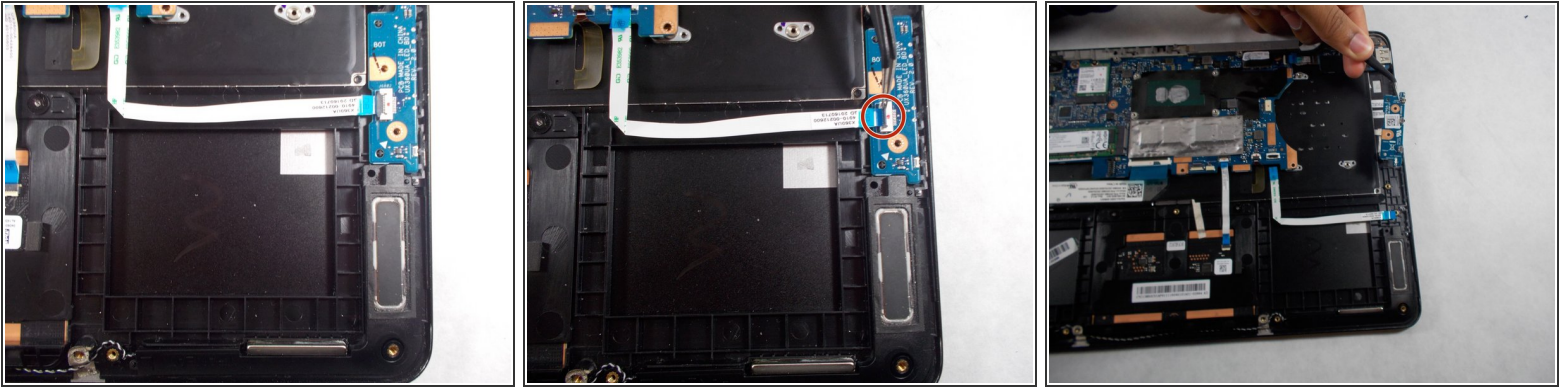
- Remove the six screws holding in the battery with a Phillips #0 screwdriver.
- Once battery is lifted out and removed, proper dispose of the old battery.
- ⓘ Each screw is 0.5 cm in length and 0.5 cm in diameter.


## Step 6 — Power & Volume Button PCB Board



- Remove the screw holding the Power chip in place and remove it using a Phillips head #0 screw driver.
- ⓘ Screw length is 0.5 cm in length and 0.5 cm in diameter

## Step 7



- Locate the ribbon connector connecting the power chip to the mother board.
  - Simply lift up the black component and the ribbon connector should be released, then the power chip should pop out easily.
-  Discard of the old power chip properly.

To reassemble your device, follow these instructions in reverse order.