



ASUS ROG G750JW-RS72-CB Hard Drive Replacement

How to replace my ASUS ROG G750JW-RS72-CB hard drive.

Written By: Joseph Rockwell



INTRODUCTION

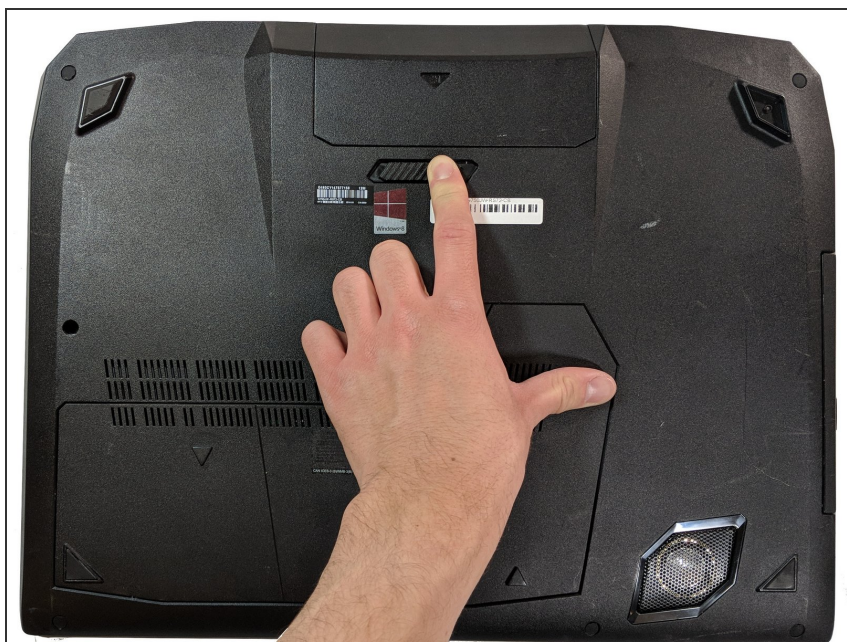
In order to remove your hard drive for any reason, take the following steps to do so correctly.



TOOLS:

- [iFixit Opening Tools](#) (1)
 - [Phillips #0 Screwdriver](#) (1)
-

Step 1 — Battery



- ❗ Make sure you completely power down the computer before beginning this process.
- With your finger, push this slide to the right. The battery should pop out of place.

Step 2



- Pull the battery out of its place gently.

Step 3 — Hard Drive



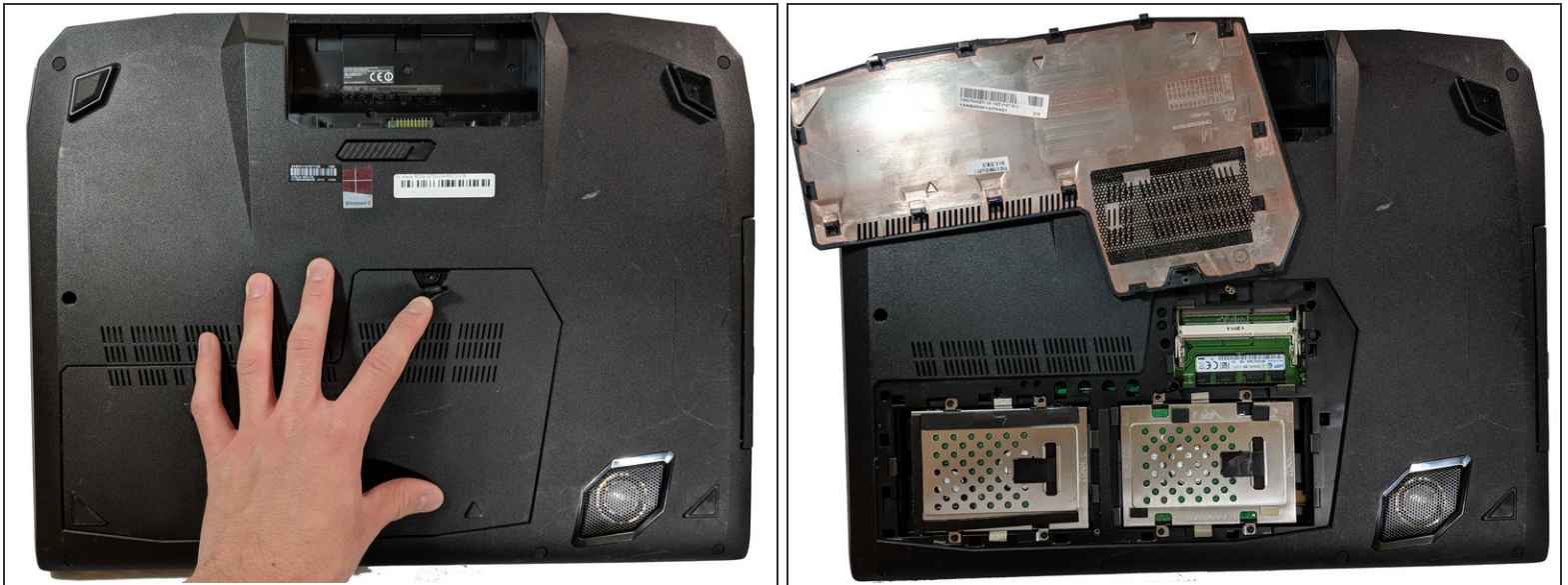
- Lift up the flap using a plastic opening tool.
- Hold the flap back with your finger.

Step 4



- Unscrew the 5.2mm screw underneath the flap.

Step 5



- Once the screw is out, pull on the plastic tab to pull off the plastic cover.

Step 6



- Unscrew the 5.2mm screws holding the hard drive in place.
- Gently pull the rubber hard drive mount to the side.
- Pull the drive out.

To reassemble your device, follow these instructions in reverse order.