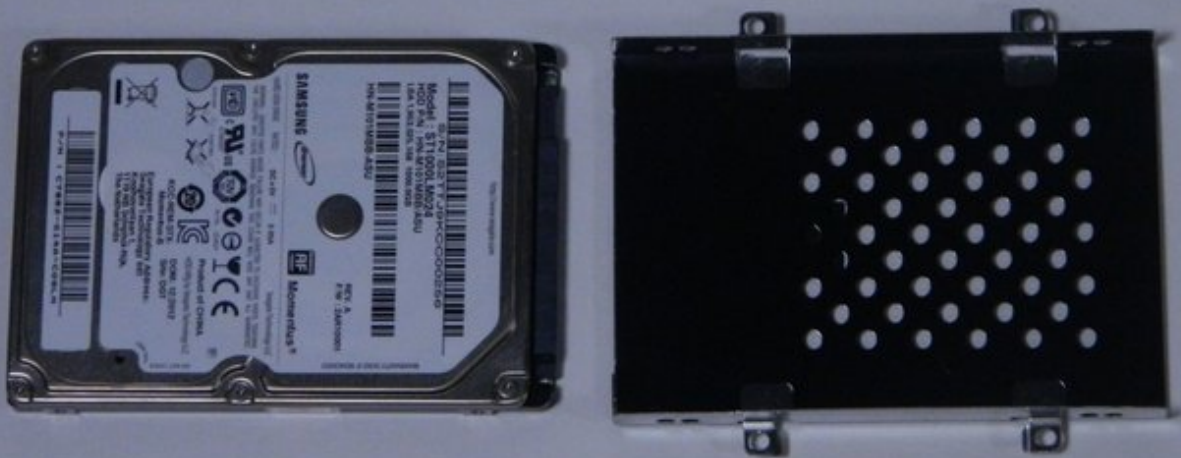




ASUS ROG G75VX-BHI7N11 internal Hard Drive Replacement

This guide will go over the steps on how to take the internal hard drive out and replace it with an updated model.

Written By: Logan Smith



INTRODUCTION

Following this guide, you will be able to remove the external hard drive and replace it with a new one of your own. Make sure that you have a hard drive to replace the old one with prior to attempting this guide.

TOOLS:

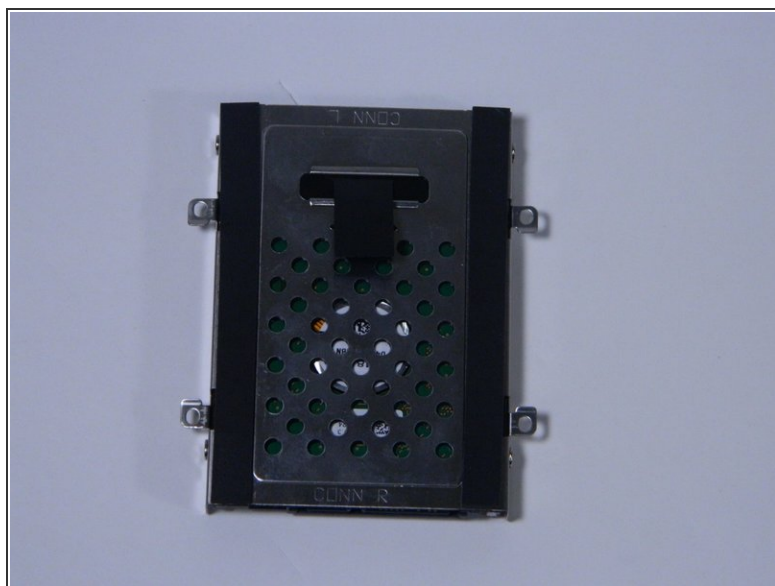
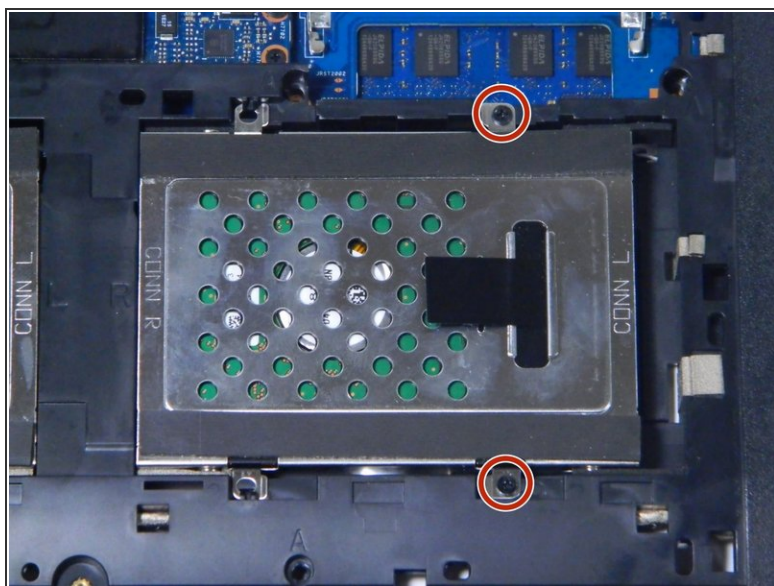
- [Phillips #0 Screwdriver](#) (1)
-

Step 1 — Internal Hard Drive



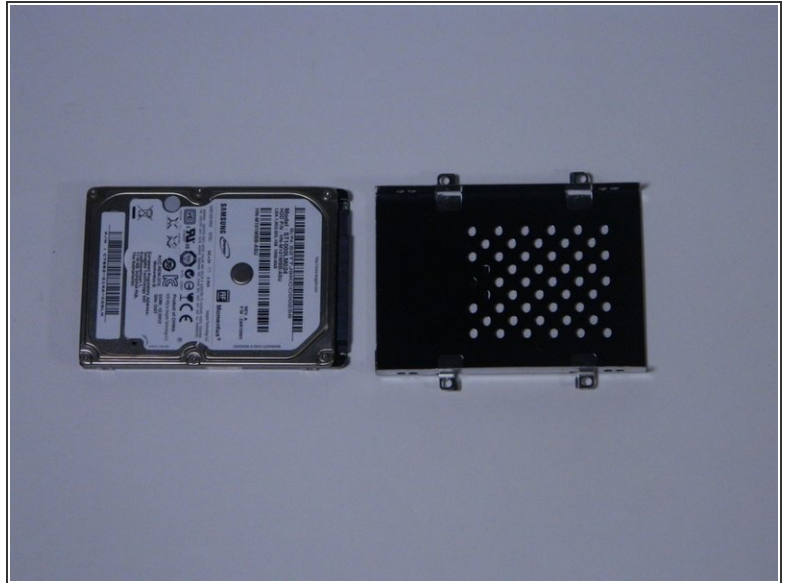
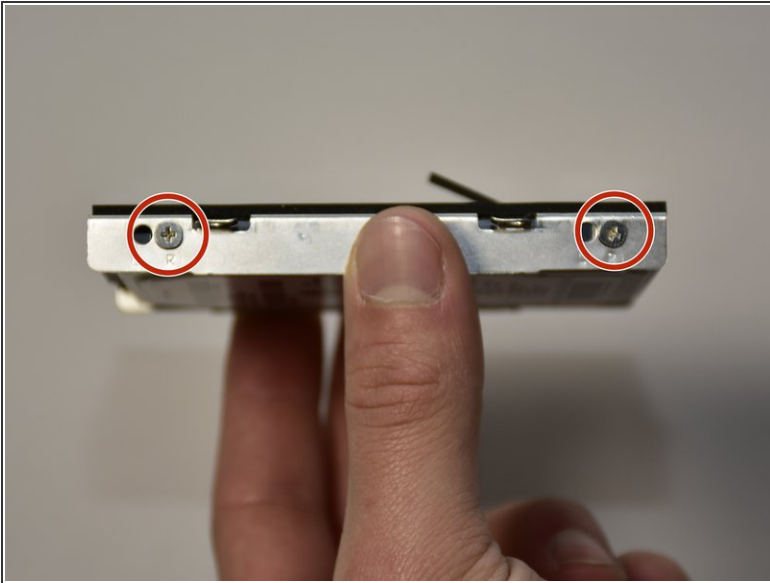
- Remove the six screws on the back of the laptop using a Phillips screwdriver.
- Remove the back casing being held on by the one single screw. First lift the casing at the edge where the screw once was, then carefully lift at the rest of the edges to loosen the casing. Pull the casing towards the edge where the screw was.

Step 2



- Locate the metal hard drive bay in the bottom left corner of the laptop.
- Remove the two black screws securing the metal hard drive to the plastic.
- Pull the tab to the right and slide to unseat the hard drive bay, then lift out.

Step 3



- Remove the two screws on the sides of the hard drive panel, shown circled. Repeat for the other side.
- Replace the hard drive.

To reassemble your device, follow these instructions in reverse order.