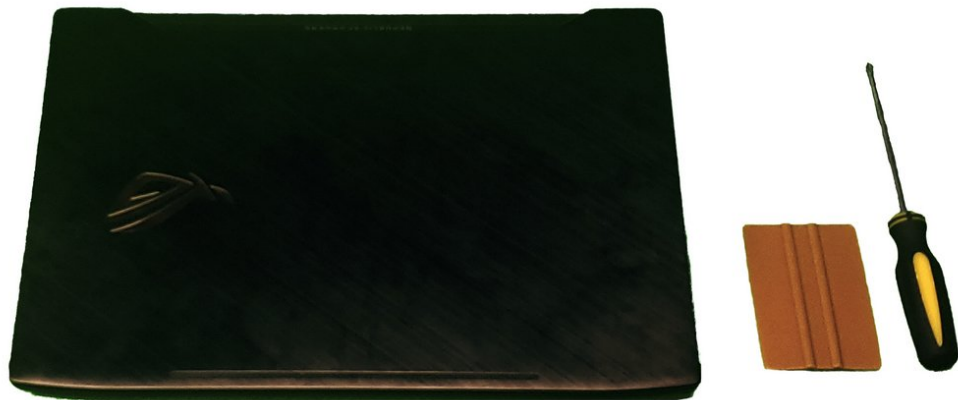




# ASUS ROG Strix GL503VD-DB71 M.2 SSD Replacement

Replace or add an M.2 SSD for the ASUS ROG Strix GL503VD laptop.

Written By: Bradley Chavis



## INTRODUCTION

This guide goes over how to replace the M.2 SSD for the ASUS ROG Strix GL503VD-DB71 laptop using the quick access compartment found on the bottom of the laptop. Before starting, ensure that you have a compatible M.2 SSD for the laptop and the proper tools.

---

### TOOLS:

- [Phillips #0 Screwdriver](#) (1)
  - [iFixit Opening Tools](#) (1)
-

## Step 1 — M.2 Solid State Drive



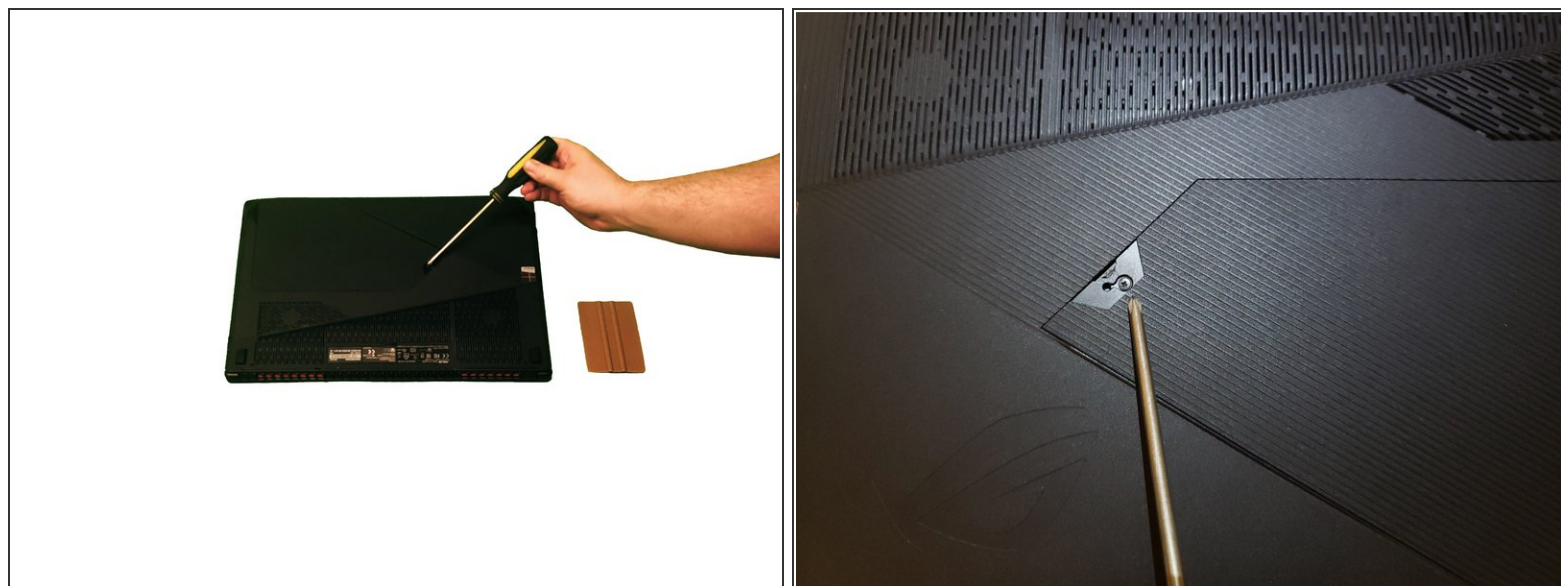
- Completely turn off the laptop, lay it on a flat surface, and turn it over.

## Step 2



- Using a plastic pry tool, pry off the rubber tab to reveal the screw underneath.

## Step 3



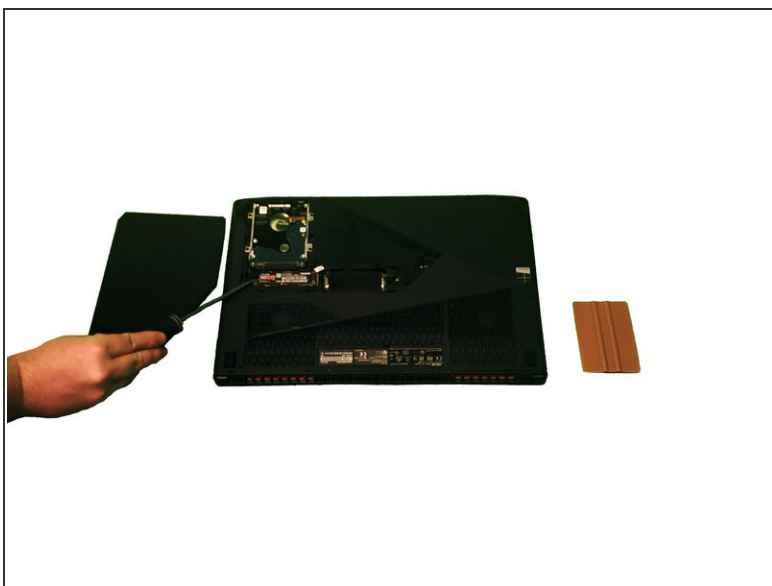
- Using a Phillips #0 screwdriver, unscrew the one 2 mm screw that is holding down the compartment cover on the bottom of the laptop.

## Step 4



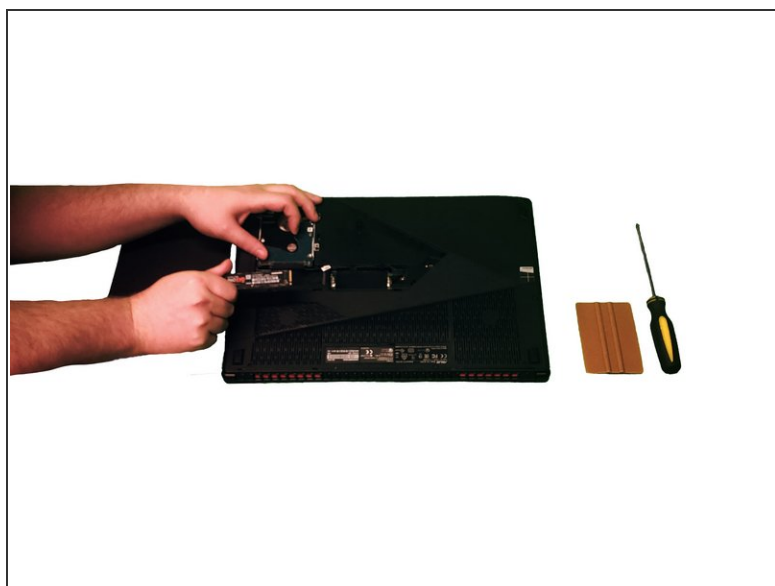
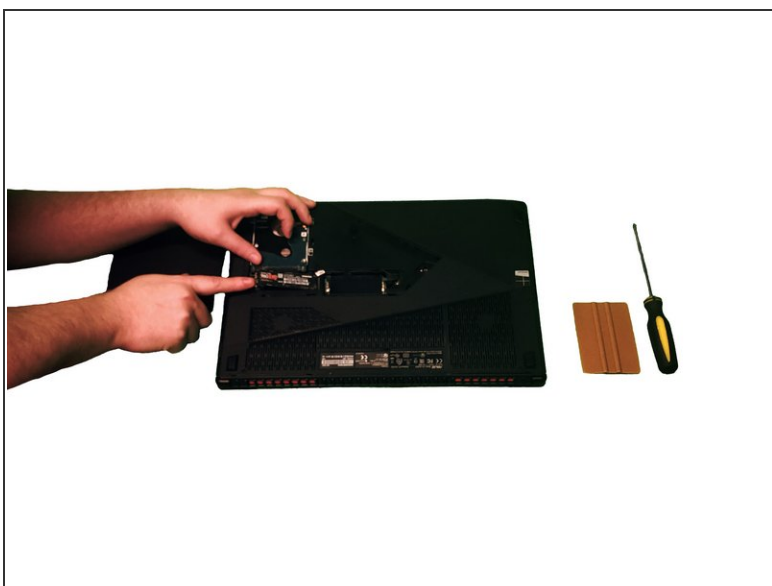
- With a plastic pry tool, carefully pry open the cover on the bottom of the laptop starting where the screw was located.
- Once part of the cover is popped off, slide your pry tool around the edge of the entire cover until all the connectors unsnap.

## Step 5



- Locate the M.2 SSD and with a Phillips #0 screwdriver unscrew the 2.5 mm screw holding it down.

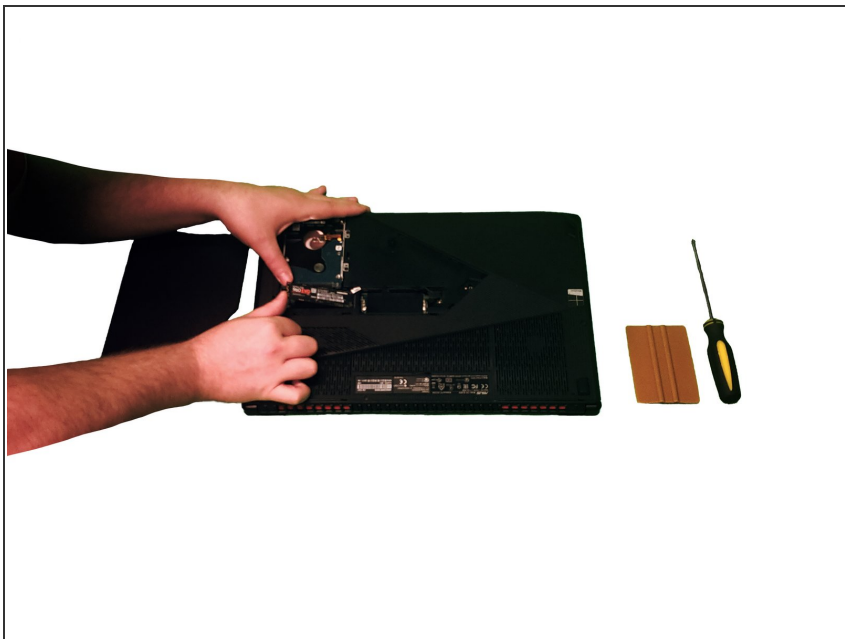
## Step 6



- With your hand, lift up the M.2 SSD and carefully pull it out of the connector slot making sure not to apply too much pressure.



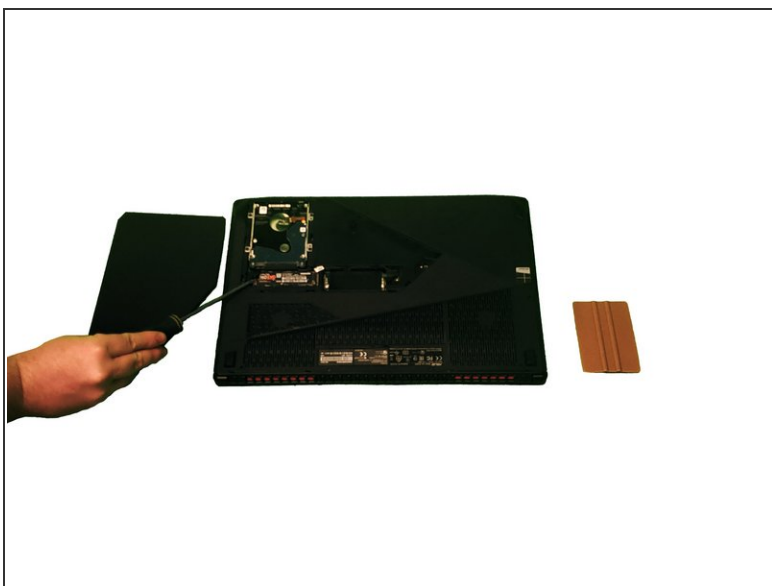
## Step 7



- Take your new M.2 SSD and slide it back into the connector slot face up until it is fully in.

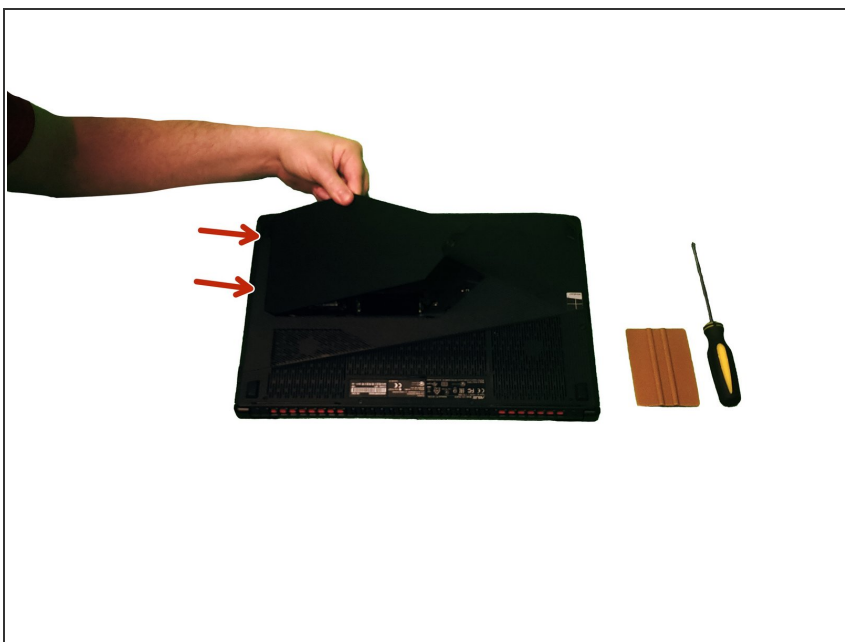
⚠ Some connection pads on M.2 SSDs are very fragile and can be broken easily.

## Step 8



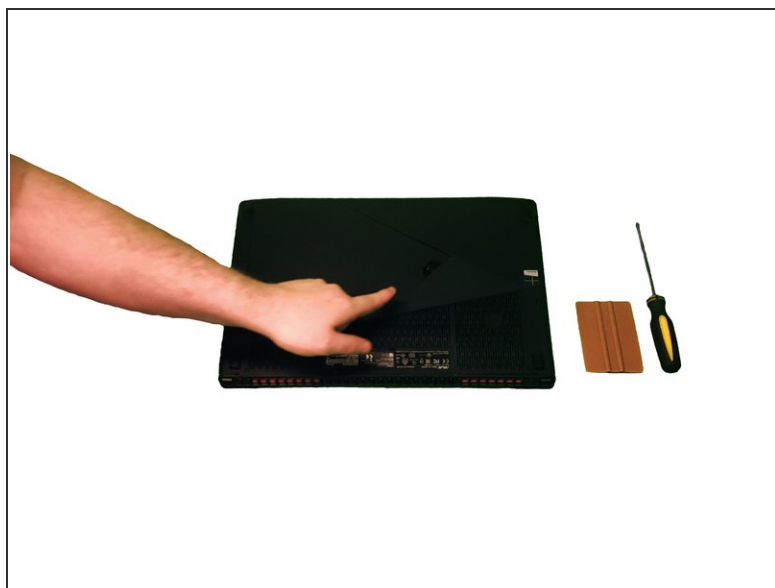
- Take the 2.5 mm screw that was holding down the M.2 SSD and with a Phillips #0 screwdriver screw it back into the slot to hold down the new M.2 SSD.

## Step 9



- Take the bottom panel and align it so the shape fits to the opening.
- Slide the left side of the cover back into the slot first so that the two extrusions fit into their openings.

## Step 10



- Carefully press down around all the sides of the bottom cover until all the connectors snap back into place.

## Step 11



- Using a Phillips #0 screwdriver, take the 2 mm screw that was holding down the cover and screw it back into the opening on the cover.

## Step 12



- Place the rubber tab back into its slot with the sticky side down.