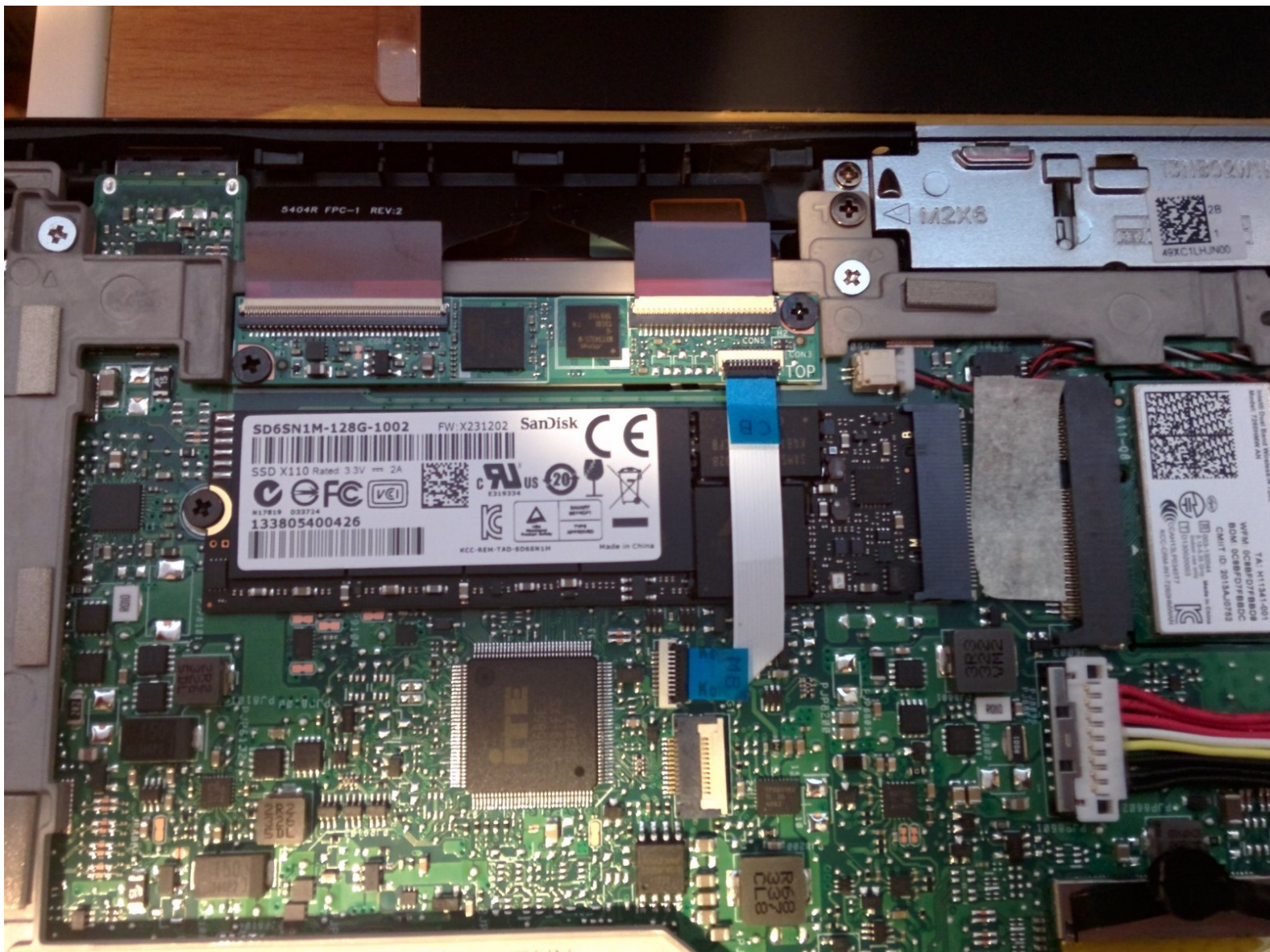




ASUS T300LA-US51T SSD replacement

Teardown to access the SSD.

Written By: Sasa Macura



INTRODUCTION

Replacement of the SSD.



TOOLS:

- [iFixit Opening Tools](#) (1)
-

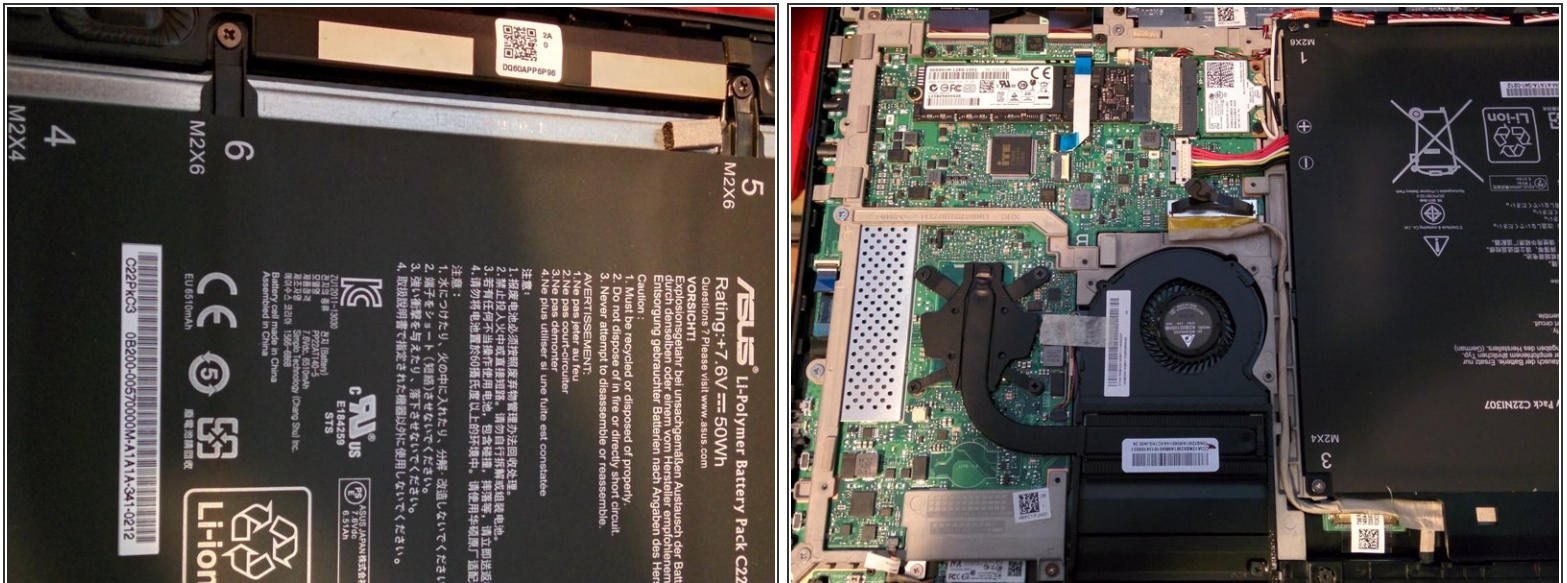
Step 1 — SSD



⚠ METHOD 1: Use a plastic pry tool to pop the back of the tablet off. Be careful the aluminum back is attached via plastic hooks.

- **METHOD 2:** Access by removing the screen (suggested by Quantum Byte)
- If like me you are unable to find a gap to detach the aluminium back from the frame so instead I tried accessing by removing the screen using a sharp tool (a metal blade such as a Stanley knife or a flat-ended spudger) as in the video (not my work).
- Unfortunately, this is not as easy as in the video as the entire outer edge seems to be glued. Furthermore, the screen cracks v. easily. Since my screen was already damaged, I ended up breaking up and tearing the screen off. I am perhaps not best to advise on this method.
- I suggest using a hair dryer/ heat gun to melt the glue sufficiently to make the screen detach.

Step 2



- The battery is attached via 6 screws. They are clearly marked with location and screw size.

Step 3



- The SSD is a M.2 NGFF style with a size of 80mm. The label states 3.3V 2A. If replaced with a lower power drive battery life might increase.
- Unscrew the single screw on the end of the drive. Undo the tabs on the ribbon cable above it and take the ribbon out.
- Remove the drive and replace with a larger new one.

To reassemble your device, follow these instructions in reverse order.