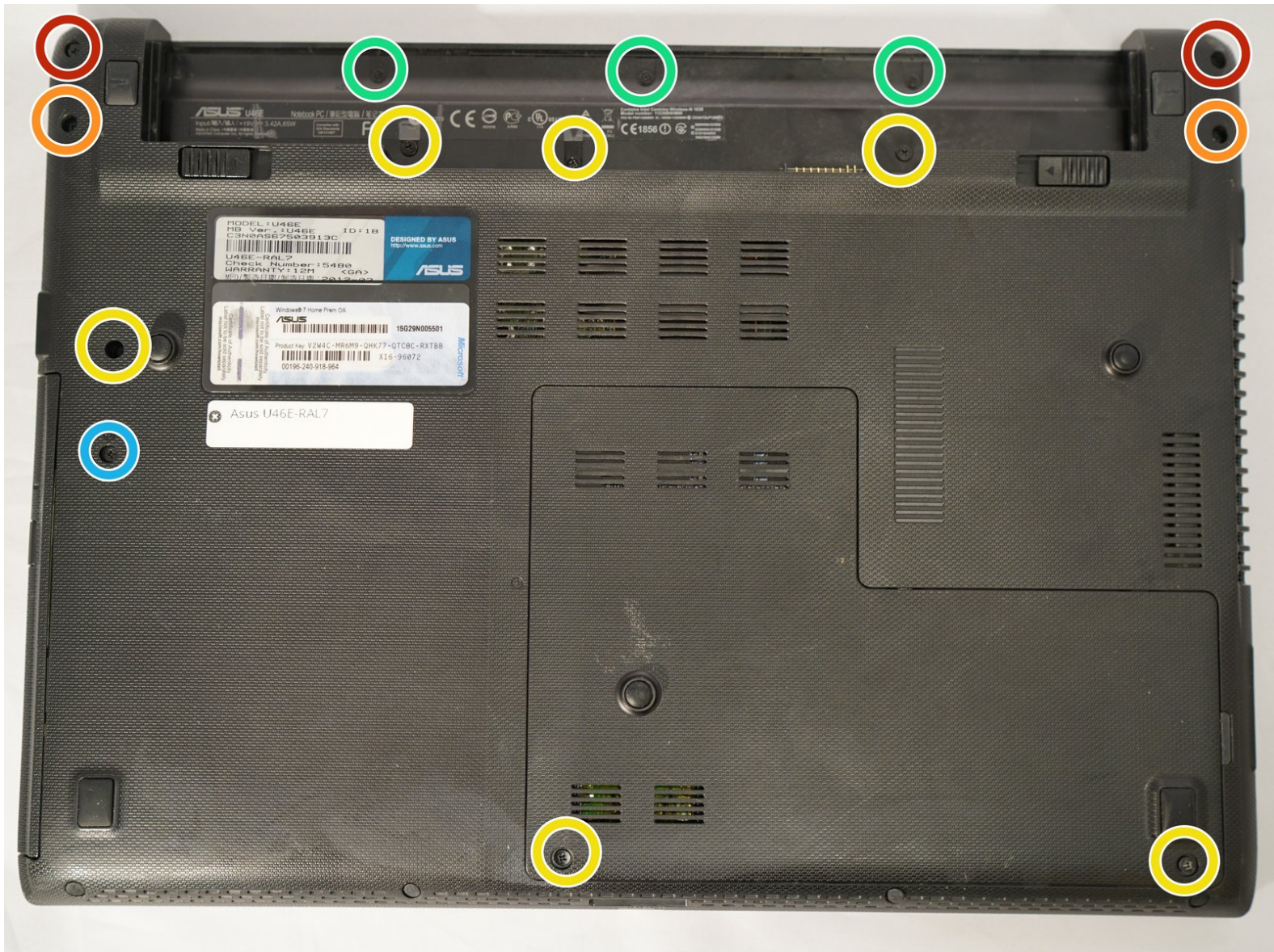




ASUS U46E-RAL7 Back Panel Removal Guide

Back panel removal guide for the ASUS U46E-RAL7 Laptop.

Written By: Vanessa Ng



INTRODUCTION

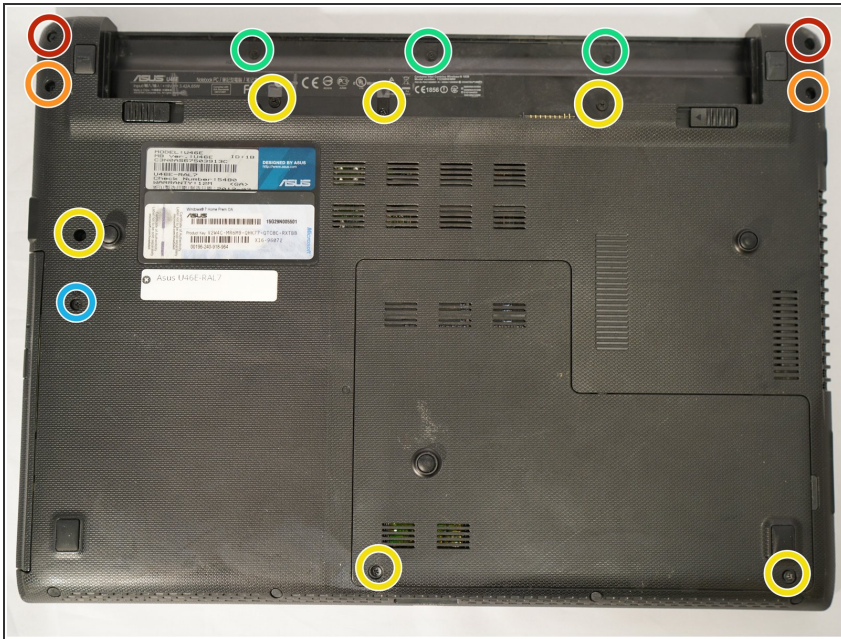
In this guide, the user will be able to follow step-by-step instructions for replacing the back panel of the ASUS U46E-RAL7 Laptop.



TOOLS:

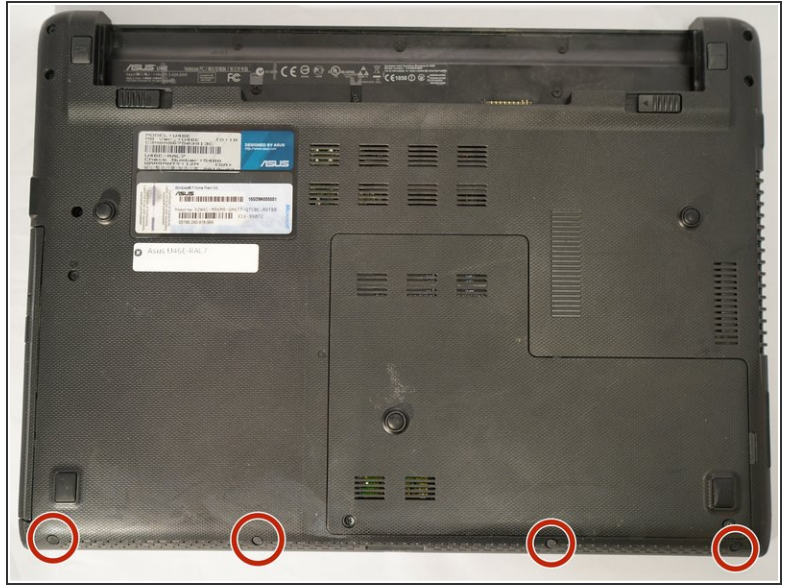
- [Phillips #0 Screwdriver](#) (1)
 - [Tweezers](#) (1)
 - [iFixit Opening Tools](#) (1)
-

Step 1 — ASUS U46E-RAL7 Back Panel Removal Guide



- Remove two (2) 9mm x 4mm screws from the back panel with the size 0 Phillips head screwdriver.
- Remove two (2) 7mm x 4mm screws from the back panel with the size 0 Phillips head screwdriver.
- Remove six (6) 7mm x 4mm screws with the size 0 Phillips head screwdriver.
- Remove three (3) 3mm x 3mm screws with the size 0 Phillips head screwdriver.
- Remove one (1) 4mm x 4mm screws with the size 0 Phillips head screwdriver.

Step 2



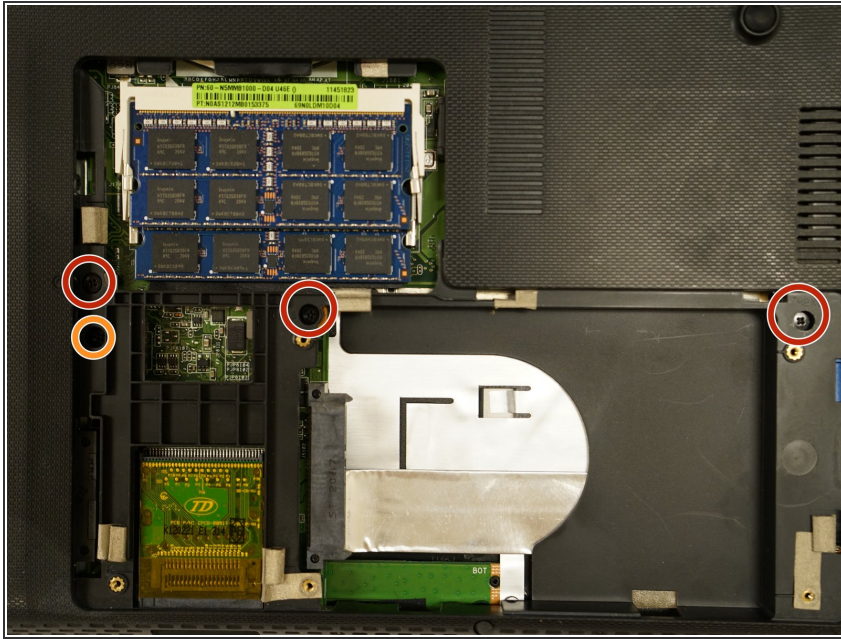
- Remove the rubber caps (4) with the tweezers. If the rubber caps are not removed easily, pull gently. The caps are glued down.
- Remove four (4) 7mm x 4mm screws with the size 0 Phillips head screwdriver.

Step 3



- Remove the L shaped panel with the plastic opening tool by inserting it into the indent along the USB port side of the laptop.
- Push down gently on the plastic opening tool until part of the panel pops up.
- Use your fingers to pop the panel off.

Step 4



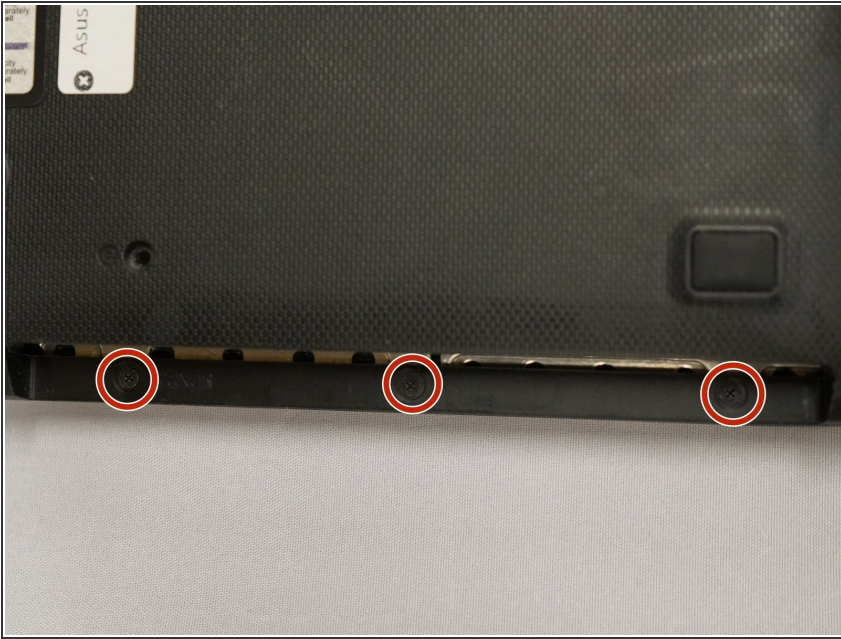
- Remove three (3) 5mm x 4mm screws with the size 0 Phillips head screwdriver.
- Remove one (1) 4mm x 4mm (closest to the battery) screw with the size 0 Phillips head screwdriver.

Step 5



- Remove the CD ROM drive by inserting the plastic opening tool between the drive and the laptop's side.
- Push down gently to eject the drive.
- Pull the drive straight out to remove the part from the laptop.

Step 6



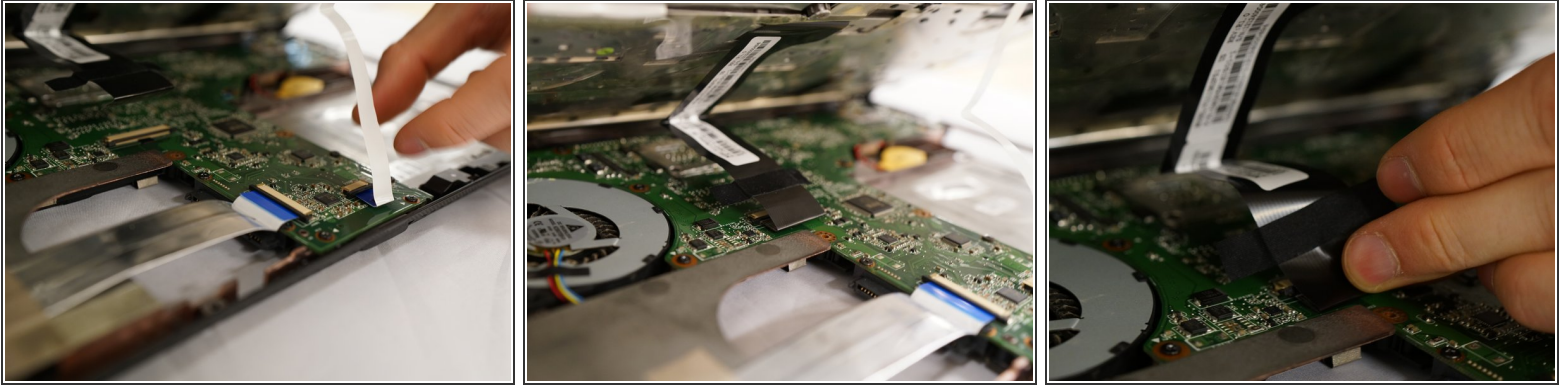
- Remove three (3) 3mm x 3mm screws with the size 0 Phillips head screwdriver.

Step 7



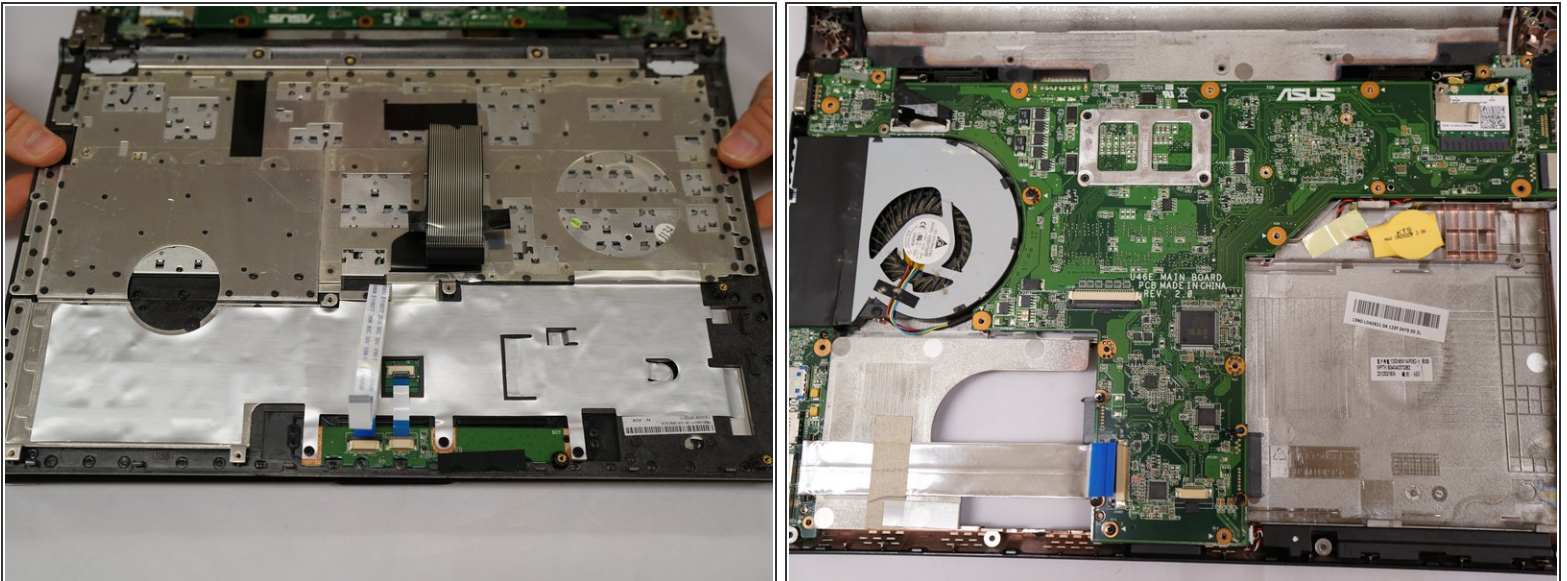
- Flip the device so that the laptop will open away from you to remove the hinge cover behind the screen.
- Place index fingers underneath the hinge cover and gently pull up.
- The cover will pop off easily with a click.
- Remove five (5) 5mm x 4mm screws from the hinge compartments of the device with the size 0 phillips head screwdriver.

Step 8



- Open the screen.
- Carefully lift the keyboard panel. The keyboard will be attached to the motherboard by two ribbons.
- To disconnect the ribbons, use your fingernails to push down gently on the protruding plastic at the base of the connector. There is a soft click and ribbon releases. Repeat for the other ribbon.

Step 9



- Remove the keyboard from the computer to reveal the motherboard.

To reassemble your device, follow these instructions in reverse order.