



ASUS UX50V-RX05 Hard Drive Replacement

Written By: James



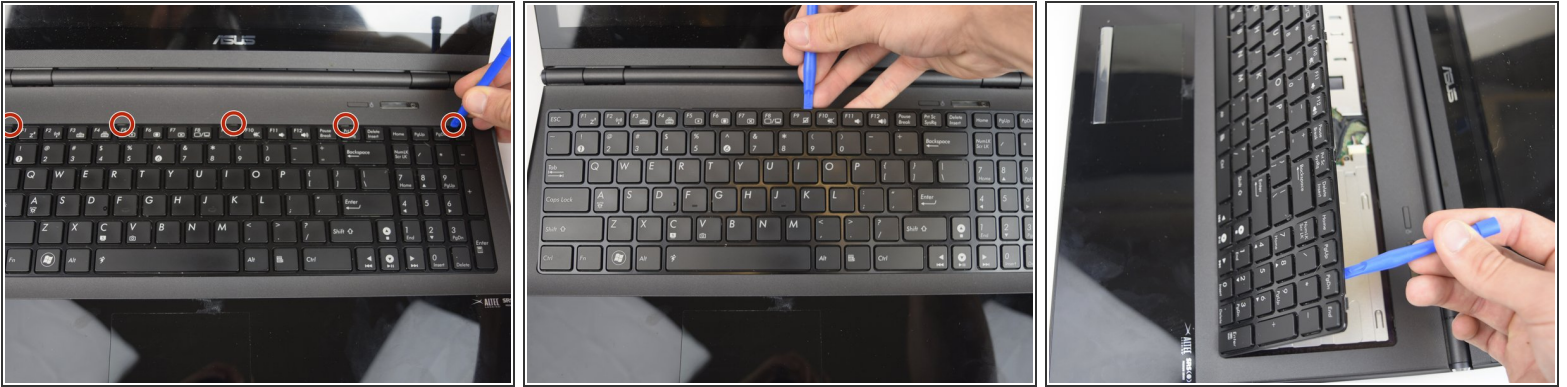
INTRODUCTION


This is how to replace your broken or damaged Hard Drive on your Asus UX50V-RX05 laptop.

TOOLS:

- [iFixit Opening Tools](#) (1)
 - [Heavy-Duty Spudger](#) (1)
 - [64 Bit Driver Kit](#) (1)
 - [T6 Torx Screwdriver](#) (1)
-

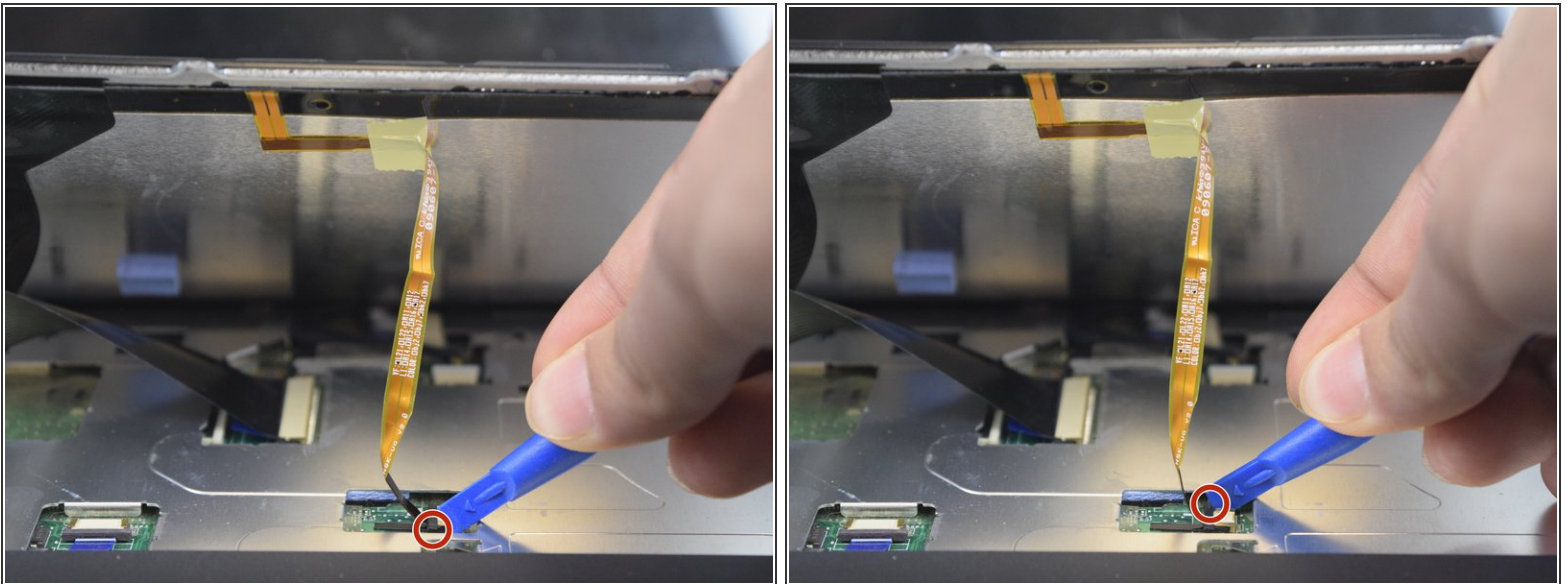
Step 1 — Keyboard



 Make sure the device is powered off and the battery is removed before beginning.

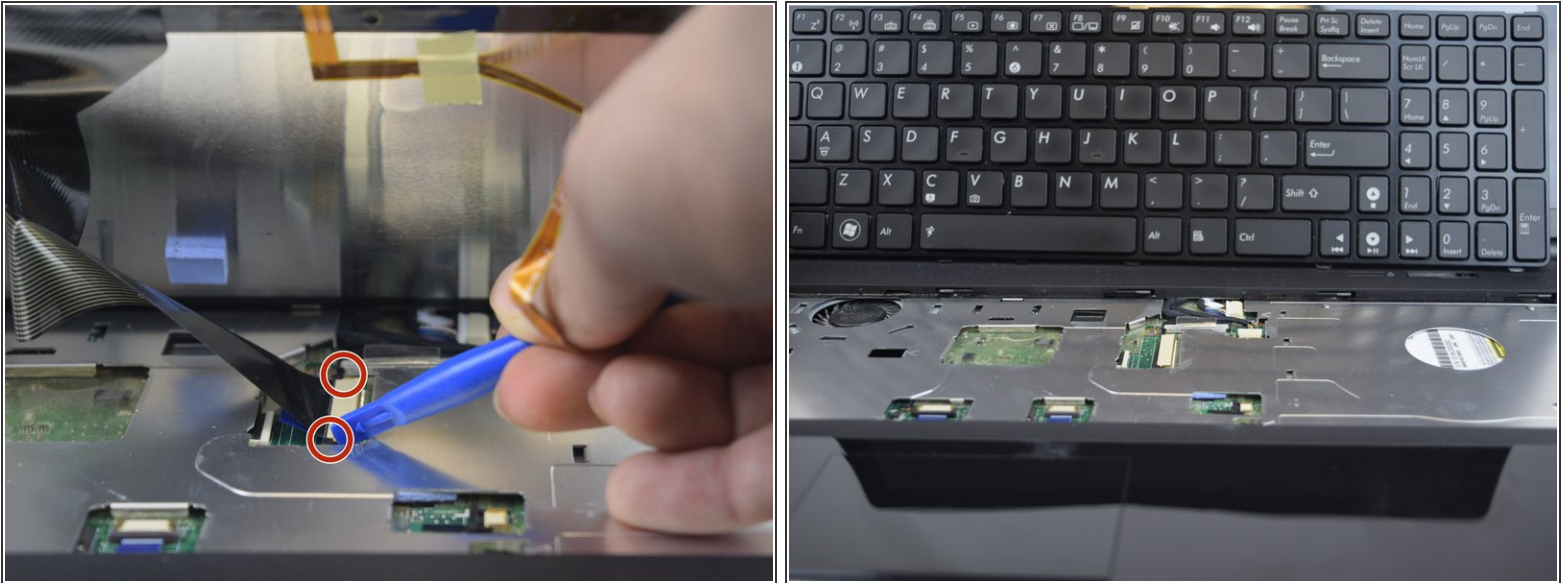
- Use the Plastic Opening tool to pry the five slots up at the top of the keyboard.

Step 2



- Lift the keyboard enough to expose the two ribbon connectors (LCD flex cable and flex band).
- Use the Plastic Opening tool to push open the two black clips on each side of the connecting cords.
- Remove the cable after pushing out the two black clips.

Step 3



- Push out each end of the black clip with a plastic opening tool or nylon spudger to remove the ribbon cable.
- Remove the cable after pushing out both black clips.
- Remove the keyboard.

Step 4 — Case Removal



- Remove the thirteen 5 mm J0 screws from the back of the laptop.
- With the keyboard removed, use the spudger tool to pry around the edge of the laptop until it is free.

Step 5



- Use the spudger tool to unplug the two cords from the body by pushing on the tabs on both sides of the plug.

Step 6



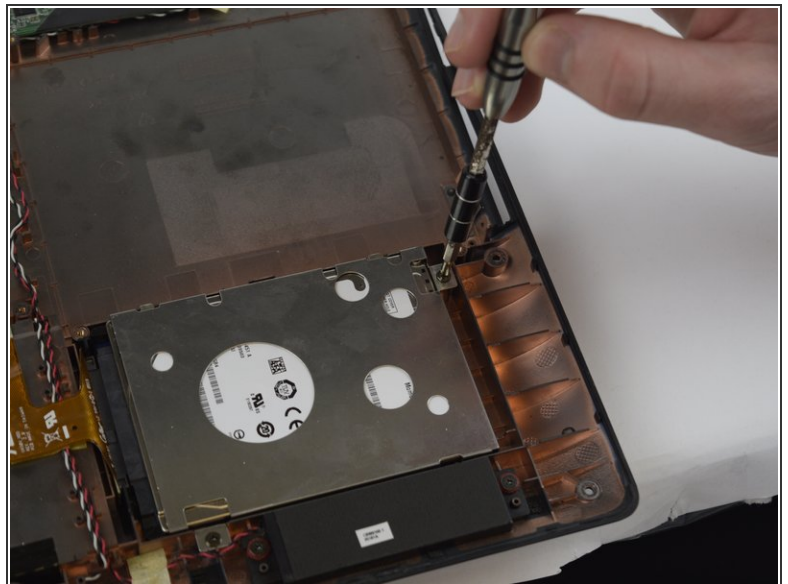
- With the previous two cords unplugged and out of the way, you can work on unplugging the black cord.
- Use your fingers to pull up on the clear tab, or use the spudger tool to push out both sides of the connector.

Step 7



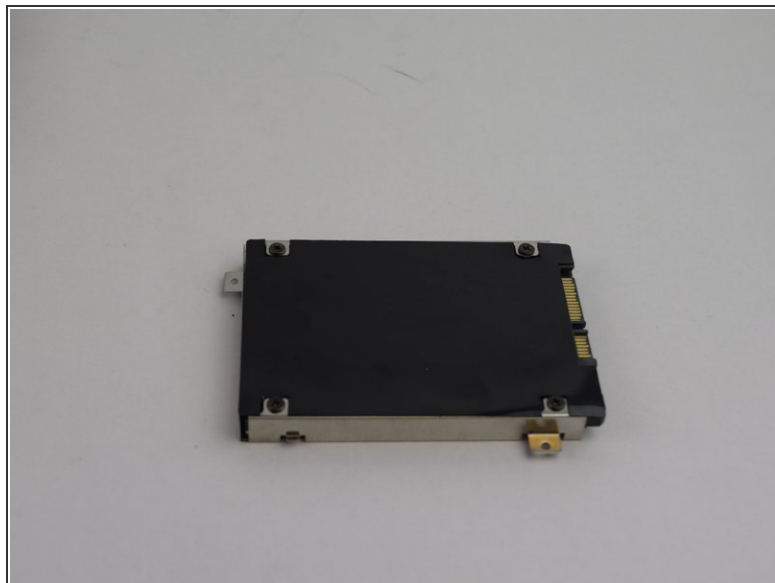
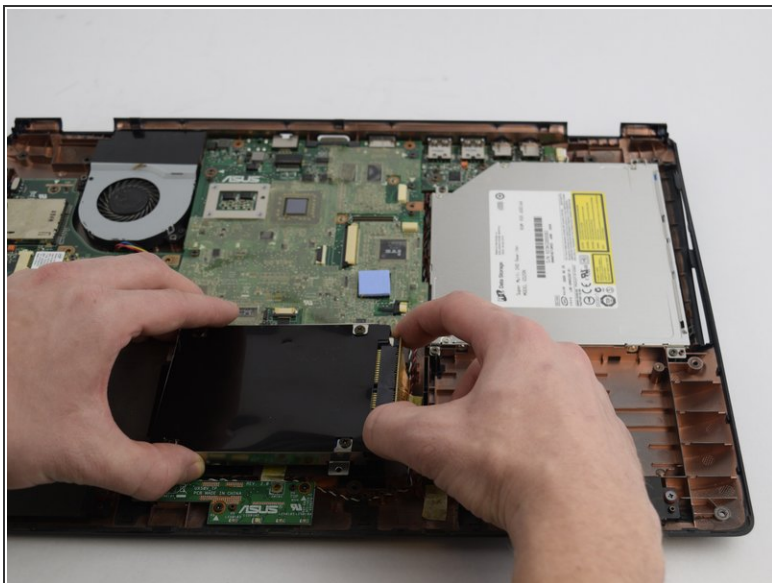
- Carefully lift and remove the plastic cover to avoid damaging anything.

Step 8 — Hard Drive



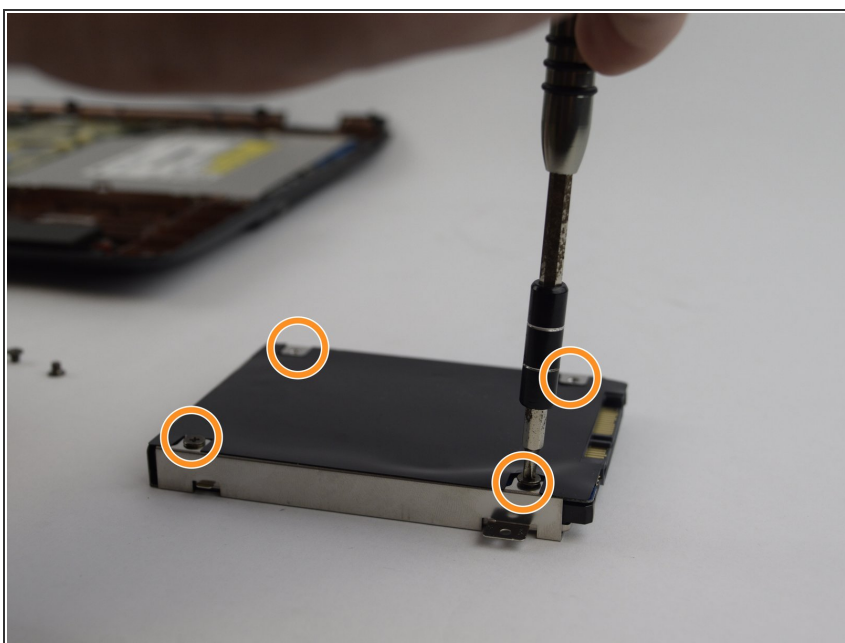
- Using the screwdriver with the JO bit, remove the two Phillips 4 mm head size 5 mm long screws from the Hard Drive.

Step 9



- Flip the Hard Drive over without lifting.
- Using your fingers, unplug the cord by pulling it away from the hard drive.

Step 10



- Unscrew the four black screws from the Hard Drive and slide it out.

To reassemble your device, follow these instructions in reverse order.