



ASUS Vivo AiO V241IC HDD and RAM Replacement

All-in-One Vivo AiO V241IC (2017): How to replace HDD and RAM and get access to the motherboard

Written By: Konstantin Epikhin



INTRODUCTION

Recently i bought a new device ASUS All-In-One V241 and it has very slow HDD Toshiba and 4Gb RAM DDR4.

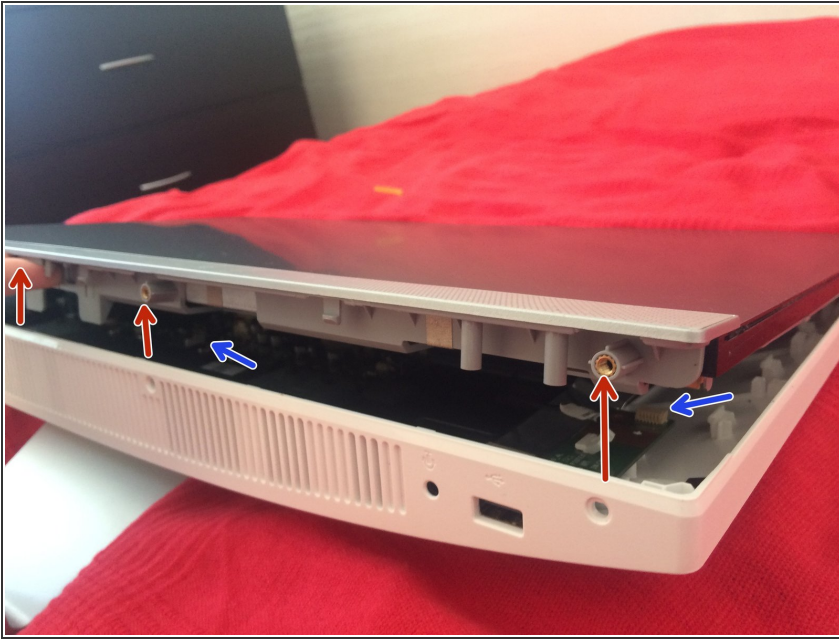
This is my first replacement guide - i hope it will be helpful for you :)



TOOLS:

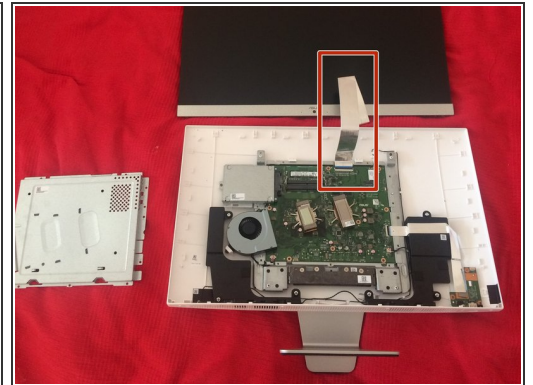
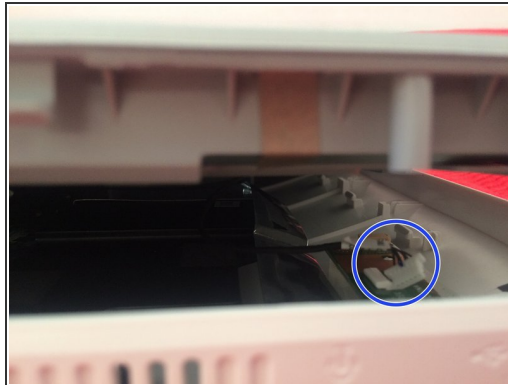
- [Phillips #0 Screwdriver](#) (1)
-

Step 1 — Remove 4 screws



- Power off your device
 - Place it horizontally on the stable ground
 - Remove 4 screws at the bottom of the display
 - Take grey panel from the sides and pull it up
- ⚠ Be careful to pulling up - there are two connectors, which goes from display to motherboard. You can safely lift display for 5-7 cm (like on the photo)

Step 2 — Lift up display

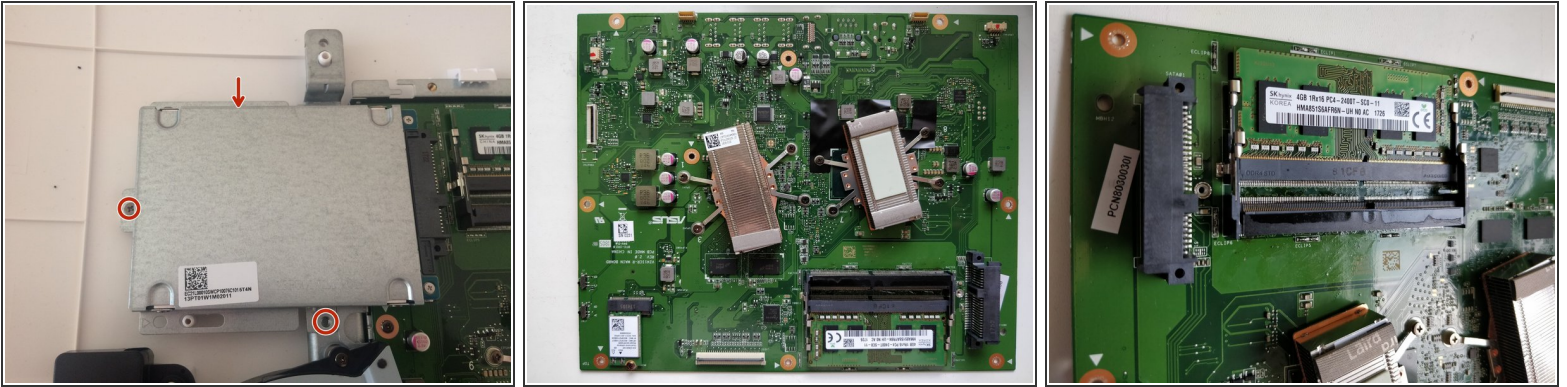


- After disconnecting two connectors from the motherboard you can lift display up

⚠ There is an also connector to display from motherboard and do not hurry to lift up display

i There is no metal cover from the motherboard on this photo

Step 3 — HDD



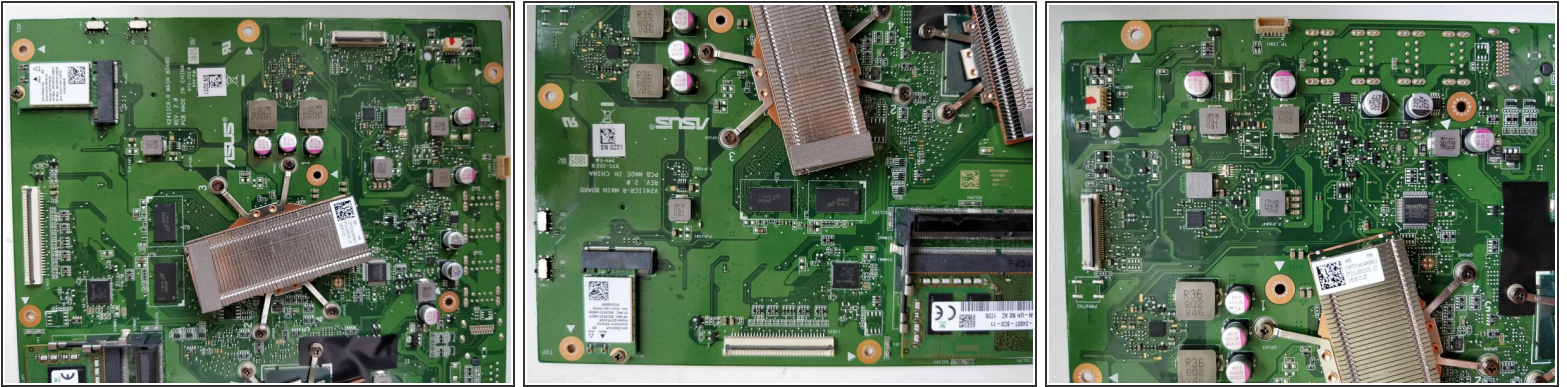
- Now you can see motherboard, covered up by metal cover
- HDD - on the left side. Remove screws and pull HDD-case

Step 4 — RAM



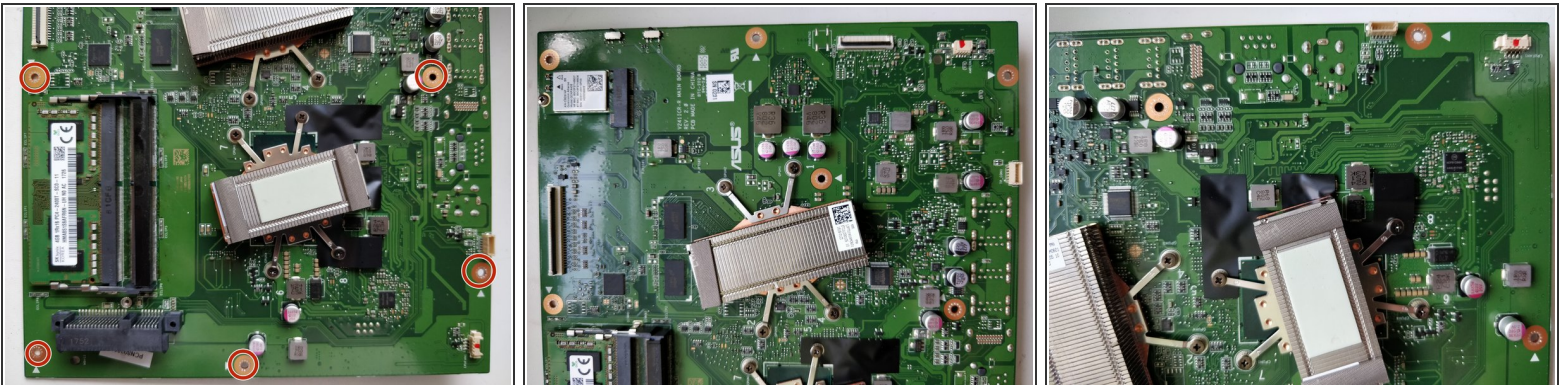
- Remove screws from the metal cover and pull up - you can see the motherboard
- RAM - 2 Slots, DDR4 2400 Mhz

Step 5 — Motherboard front side overview



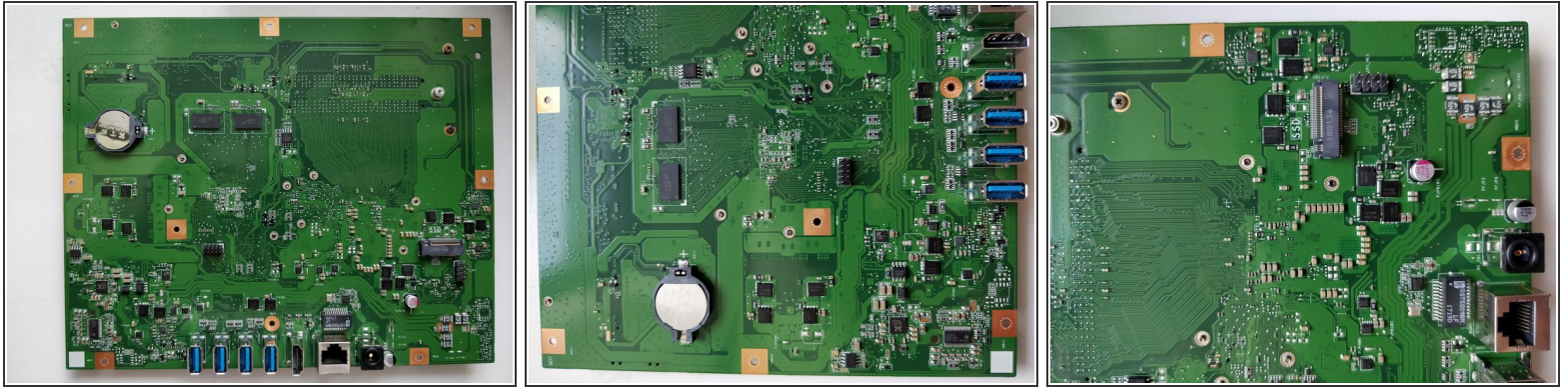
- Here you can find more details of the V241ICR-R rev 2.0 mainboard.
- This refers to V241ICGK-BA111T model of the PC

Step 6 — Accessing SSD slot



- Remove all marked screws to get to the other side of the mainboard.
- Dont forget the central one, the Fan and all the cables before lifting the MB. It goes up easy but may be some sticky glue below.

Step 7 — Motherboard back side overview



- Here you can find NGFF M.2 (key M) slot for 2280 size SSD.
- Install any AHCI (mSATA) SSD. Modules with both keys B+M are OK. Note that NVME and other PCI-E/USB modules are NOT supported.
- You may need an extra screw to fix your new SSD in the slot.
- Reassemble the system in reverse order

To reassemble your device, follow these instructions in reverse order.