



Written By: Deric Huffman



---

# INTRODUCTION

If your battery is not holding charge or is completely dead, follow the guide to replace it.

---



## TOOLS:

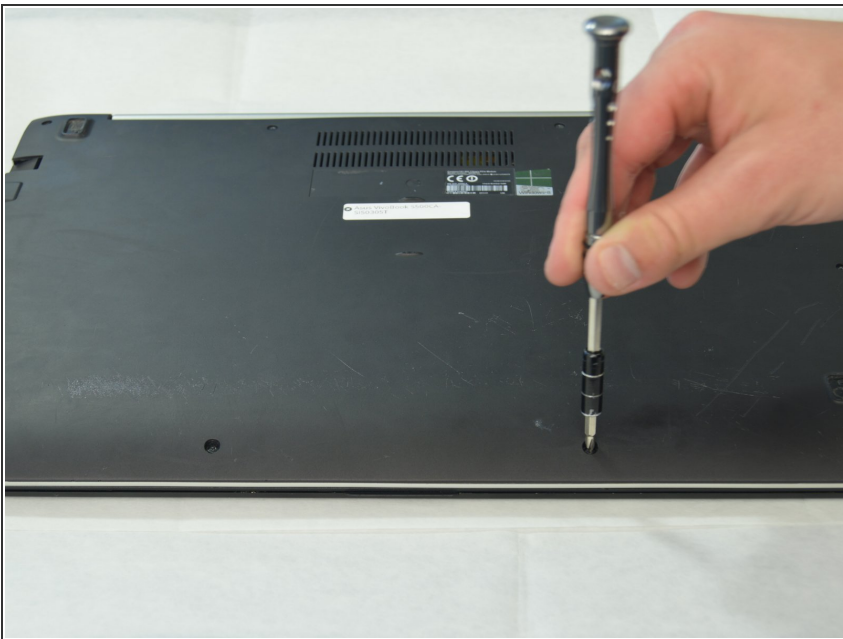
- [Phillips Head Screwdriver: Size PH1](#) (1)
  - [Plastic Cards](#) (1)
  - [Spudger](#) (1)
-

## Step 1 — Battery



- Turn the device over to where the back plate is facing up.

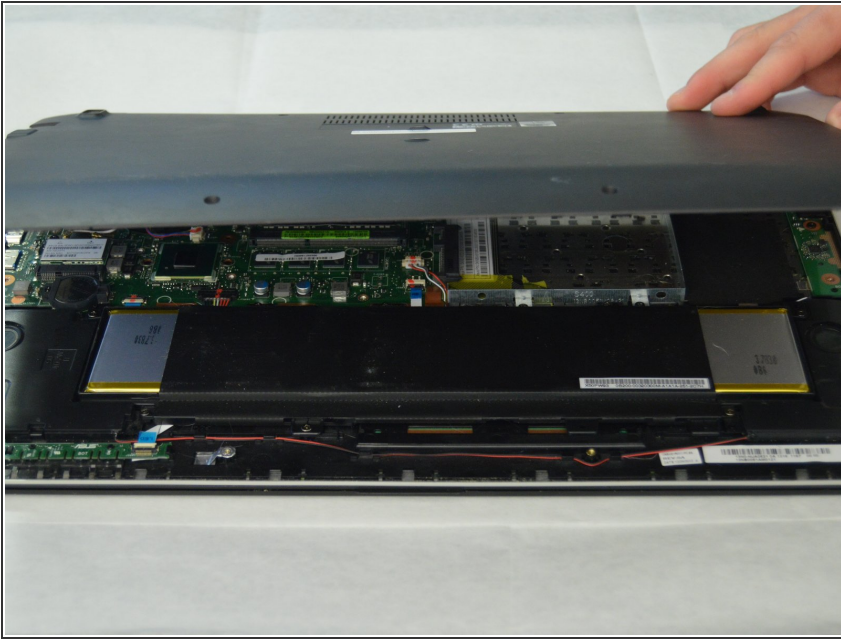
## Step 2



- Use a Philips Head PH1 screwdriver to remove 10 screws (3 1cm screws and 7 .5cm screws) around the perimeter of the back plate.
- ⓘ Place screws where they cannot be lost as they will be used to replace the back plate.

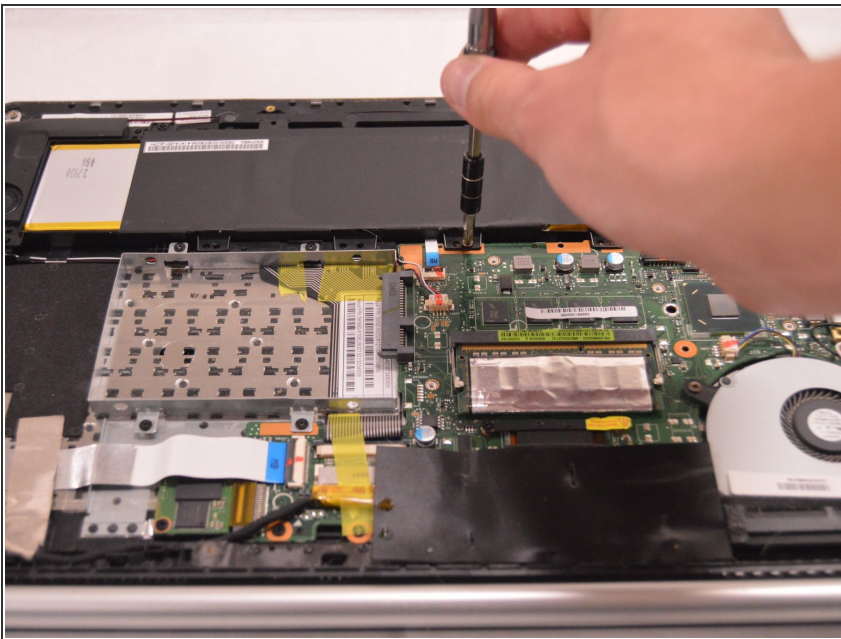


### Step 3



- Remove the back plate by lifting it straight up.

### Step 4



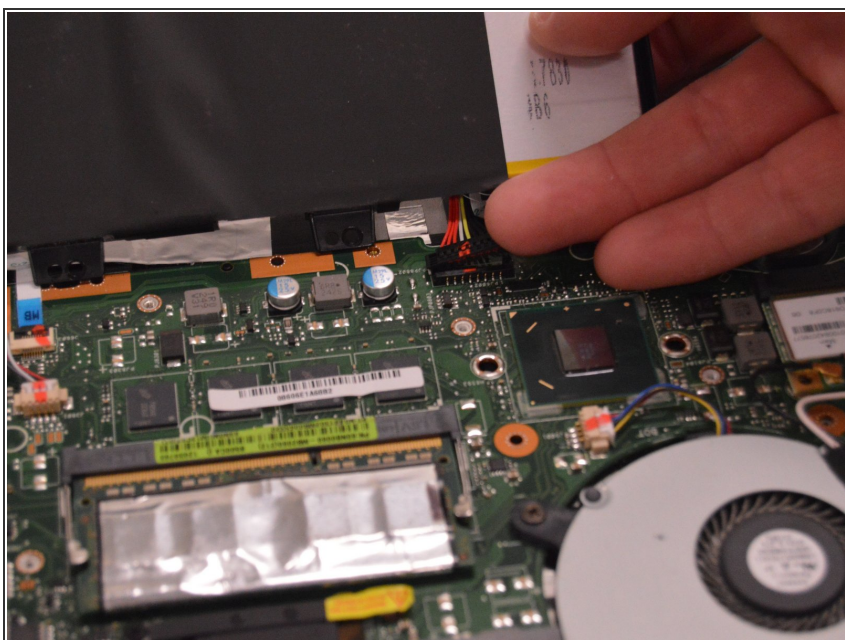
- Remove 9 (.5 cm) phillips screws around the edge of the battery.

## Step 5



- Lift up the battery to reveal the battery terminal.

## Step 6



- Unclip the battery terminal by prying straight up on the sides of the connector to release the clip.

To reassemble your device, follow these instructions in reverse order.