



ASUS X502CA Screen Replacement

This guide will go through the steps to replace a cracked screen.

Written By: Anthony Taylor



INTRODUCTION

If your Asus laptop screen is cracked it can make it difficult or even impossible to work on the laptop depending on the size of the crack or cracks. The only way to fix this problem is to replace the entire screen. To do this repair you will need to purchase a new screen and follow the steps in this guide. With no background working with computers you should still be able to complete the repair in under half an hour.



TOOLS:

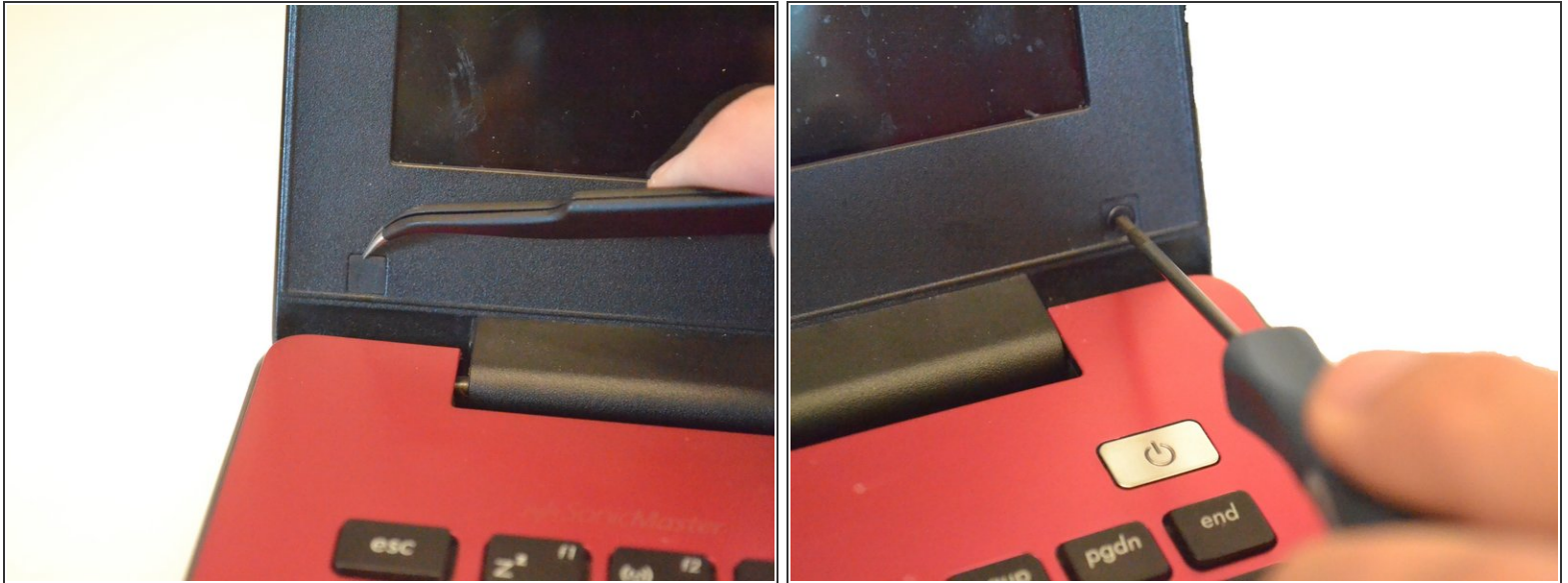
- [Spudger](#) (1)
- [iFixit Opening Tools](#) (1)
- [Phillips #00 Screwdriver](#) (1)



PARTS:

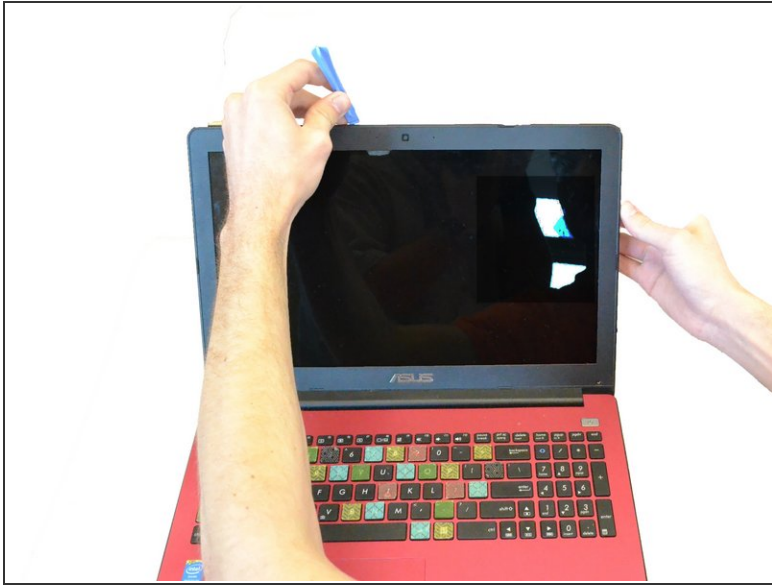
- [ASUS X502CA 15.6" Screen](#) (1)

Step 1 — Screen



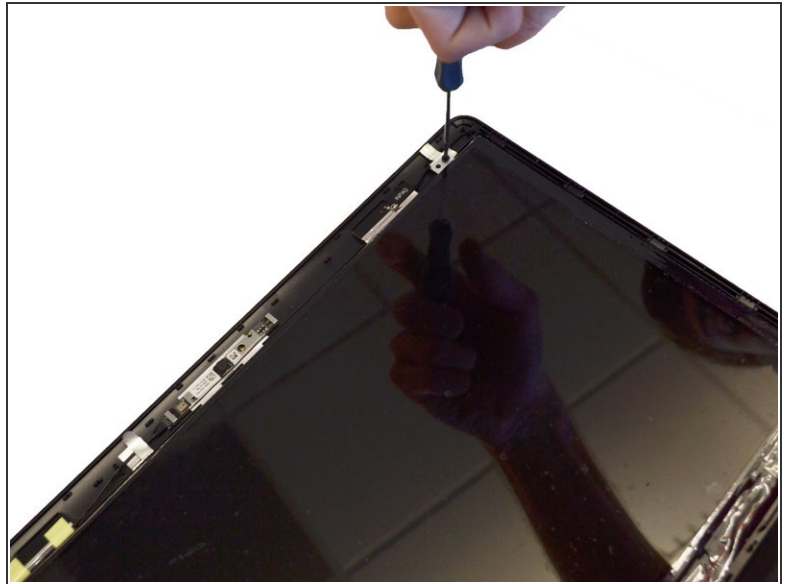
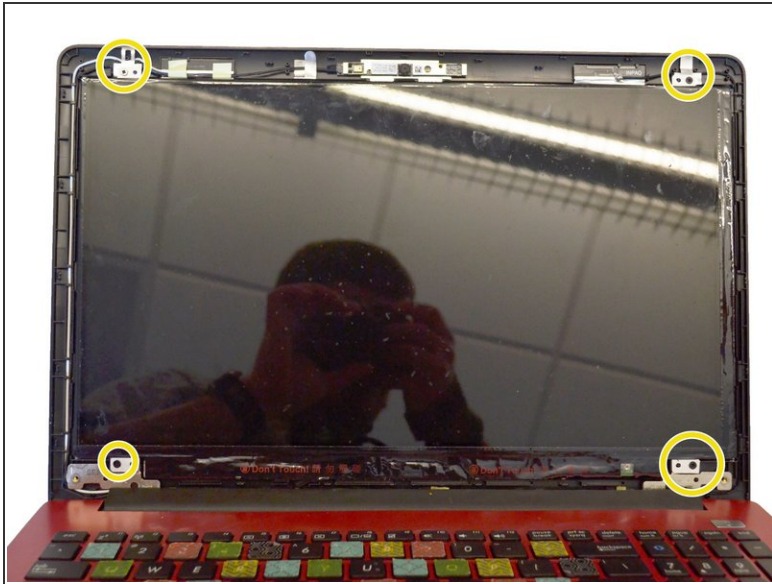
- Remove plastic square covers on both bottom corners exposing the screws below using tweezers.
- Remove the screws under the plastic square covers, using a Phillips #00 screwdriver.
- ⓘ Screws are black, 50mm in length with a 20mm diameter.

Step 2



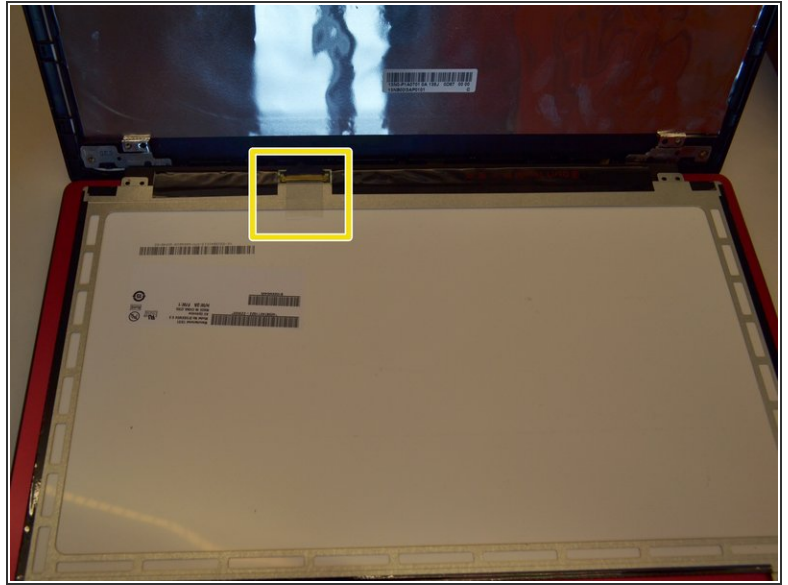
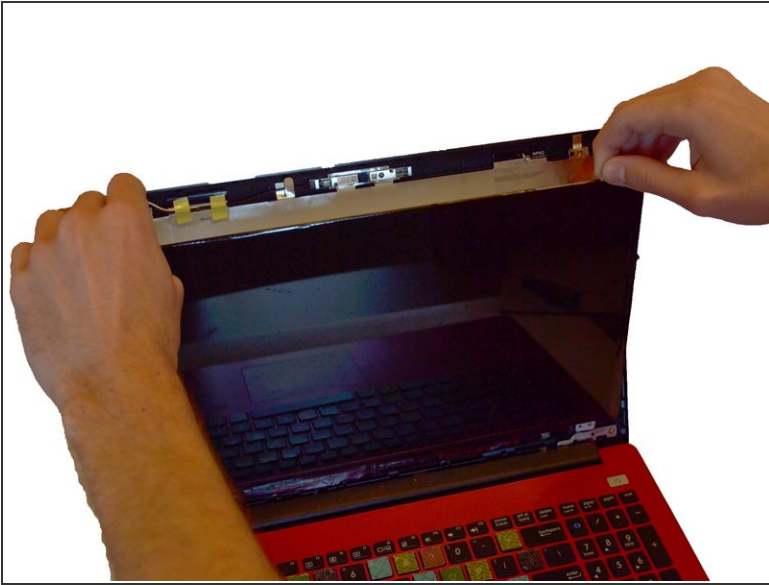
- Remove the trim from the monitor by using the Plastic Opening Tool to carefully pop off the clips around the parameter.

Step 3



- Remove the four phillips screws (two on top and two on bottom) using the Phillips #00 screwdriver.
- ⓘ The screws are black, 45mm long and 15mm in diameter with a philips head

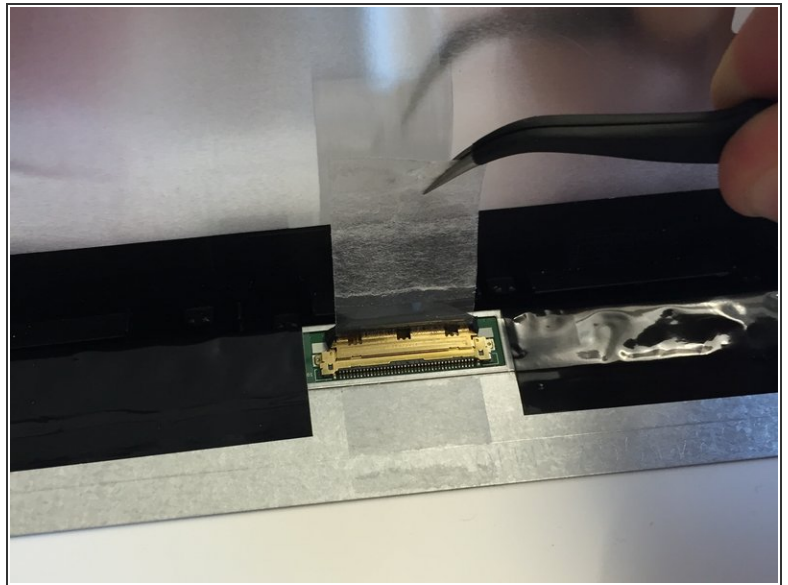
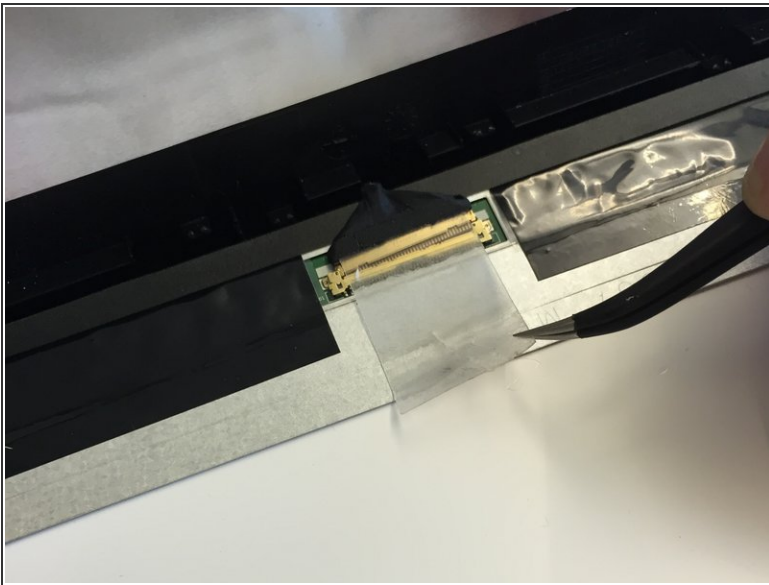
Step 4



- Pop the screen out from the top and lay flat on the keyboard.

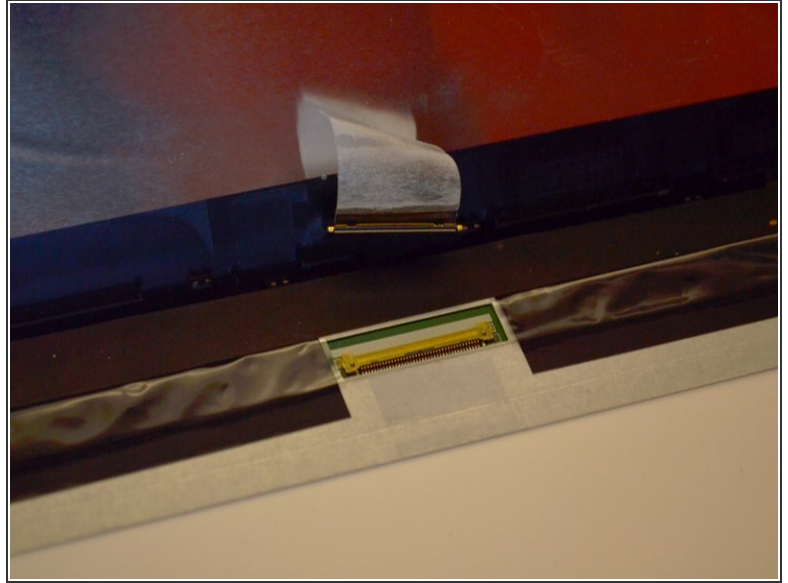
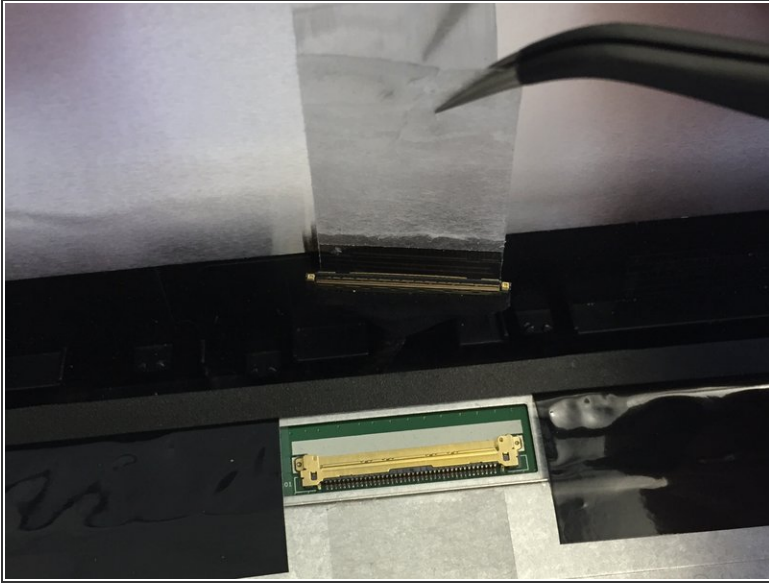
⚠ Do not pull screen away from keyboard, as it is still attached by a wire at the bottom.

Step 5



- Peel off the clear tape that is securing the video cable connector using your fingers or tweezers.

Step 6



- Unplug the screen using tweezers.

Step 7



- Replace the damage screen with a new one.
- Replacing the bezel trim requires the bottom to be inside the ends of the hinge cover. Be careful not to break the bezel when doing this.
- Removing the hinge cover has a chance of breaking the tabs that hold it on. Remove it carefully.

To reassemble your device, follow these instructions in reverse order.