



# ATT CL4940 Motherboard Replacement

This guide is for the motherboard replacement on ATT CL4940 telephone.

Written By: Hongkun Zhu



# INTRODUCTION

Special requirements: soldering and desoldering instruments

Overview:

- Unplug your device before beginning disassembly.
- Unscrew the exterior screws
- Remove the cover
- Unscrew the motherboard screws
- Detach the motherboard and replacement
- Reassembling



## TOOLS:

- [JIS Driver Set](#) (1)

J1

*for all screws in this replacement*

- [64 Bit Driver Kit](#) (1)

Hex 5

*As an extension*

- [Desoldering Pump](#) (1)
- [Soldering Workstation](#) (1)




## PARTS:

- [ATT CL4940 Motherboard](#) (1)

## Step 1 — Motherboard



 Unplug your device before beginning disassembly.

- Remove phone line and power cord from the back cover of the device.
- Remove phone cable from the side of the device.

## Step 2



- Remove the five 4mm X 10mm Phillips head screws from the back cover of the device.

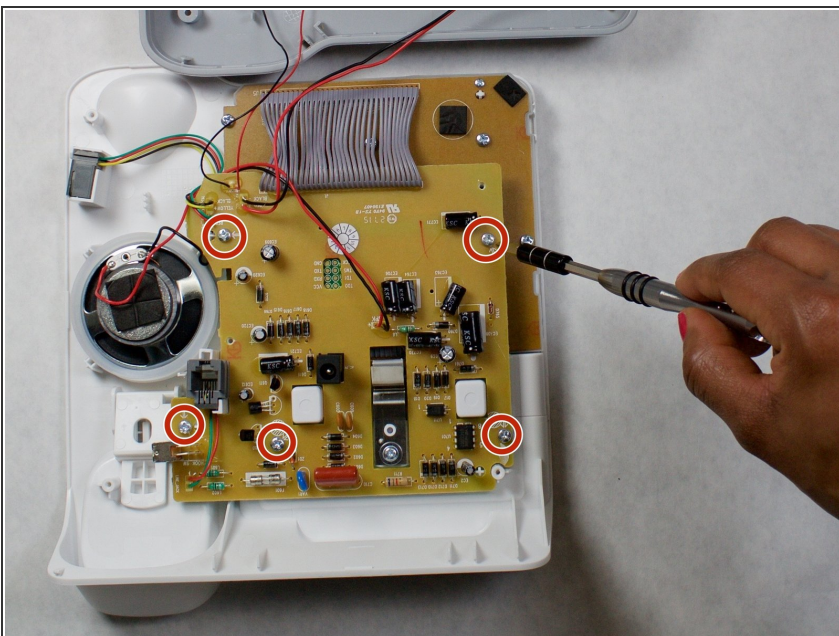


## Step 3



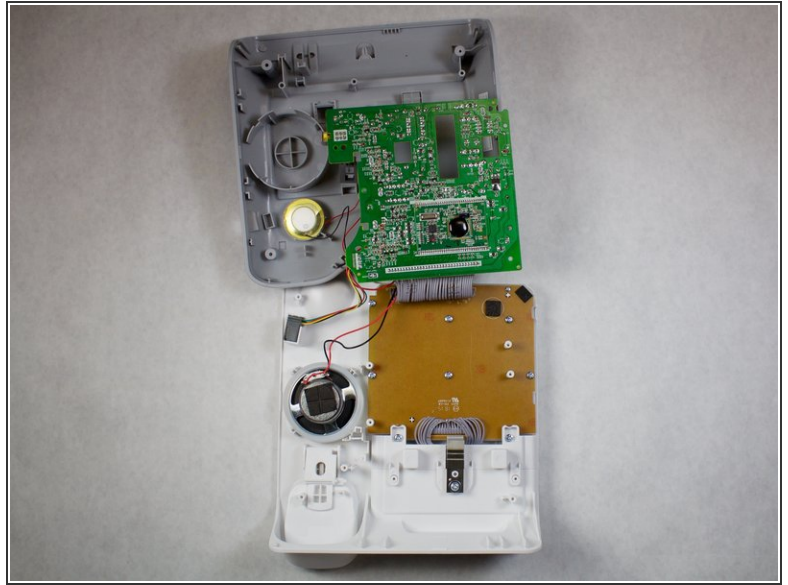
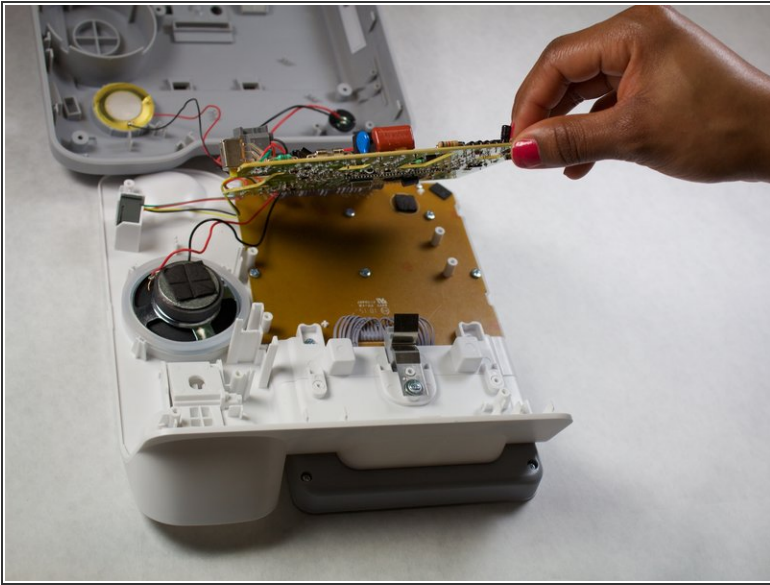
- Starting from the bottom of the device, with a metal spudger, separate the top (white) plastic piece from the bottom (gray) plastic piece.
- Work your way across the bottom of the device, then to each side, and finally to the top.
- ⓘ There are brackets every few inches along the edge of the device. These may be difficult to pull apart.
- The top and bottom pieces should separate, and the internals of the device will now be accessible.

## Step 4



- Remove the five 5mm X 5mm Phillips head Motherboard screws.

## Step 5



- Pull up the motherboard as shown.
- Disconnect the electric wires by desoldering them with a desoldering pump

To reassemble your device, follow these instructions in reverse order.