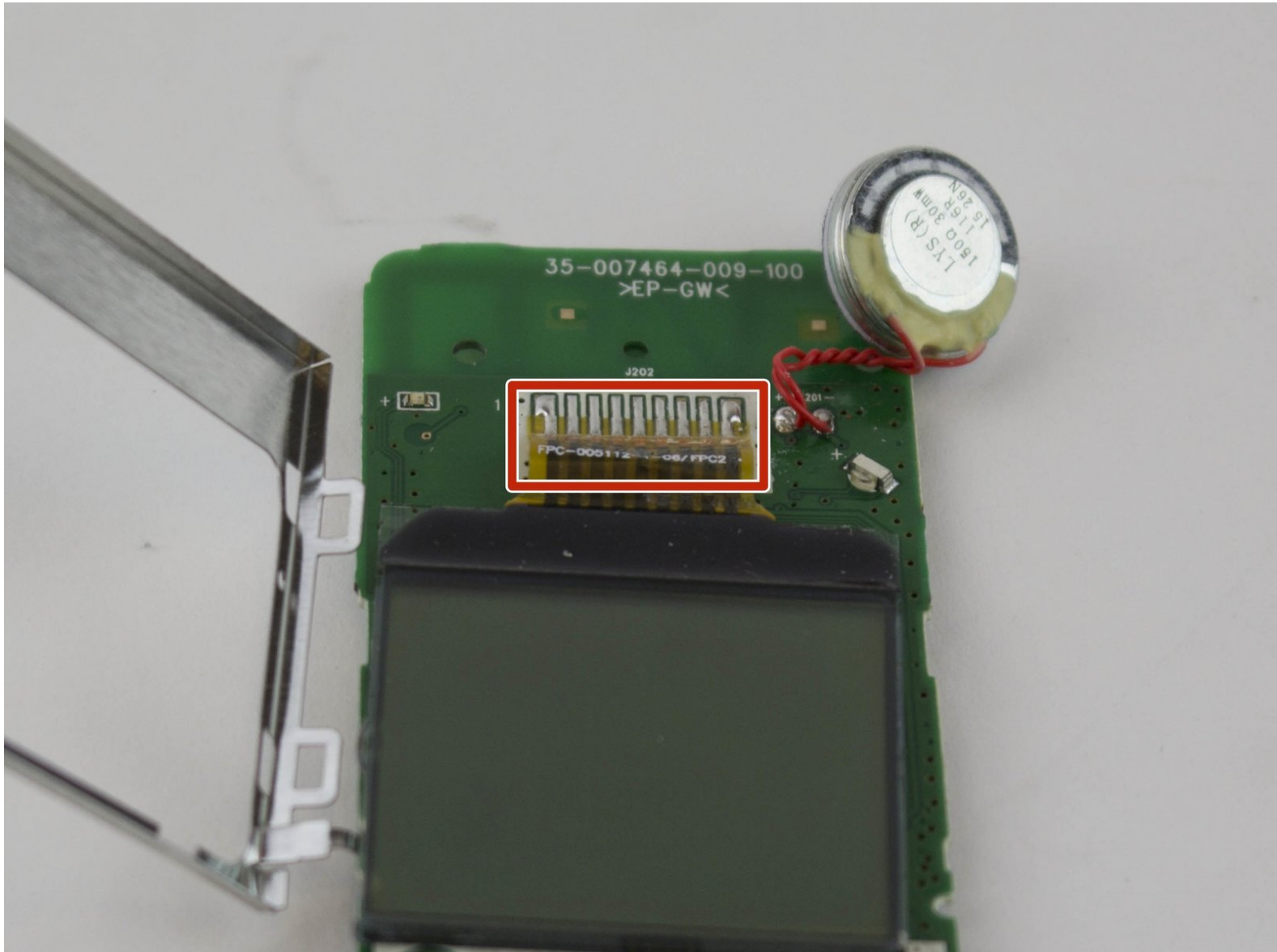




# ATT EL52300 LCD Screen on Handset Replacement

Replace your handset phone if the screen has a crack or scratch of noticeable size.

Written By: Katty



## INTRODUCTION

This guide requires the intensive removal of other parts such as the motherboard of the handset and the speakers. Please refer to the replacement guides mentioned before in order to complete THIS guide. A potential hazard would be affecting the motherboard by the charge you internally carry, therefore you should use the anti-static wrist strap to prevent this. Also soldering of some equipment is required. This repair guide is needed when there are screen clarity issues that can be replaced with a new phone screen.

---

### TOOLS:

- [Anti-Static Wrist Strap](#) (1)
  - [iFixit Opening Tools](#) (1)
  - [Soldering Iron](#) (1)
  - [Tweezers](#) (1)
  - [Phillips #1 Screwdriver](#) (1)
-

## Step 1 — Battery



- Find the bump where the battery cover meets the phone. Put your thumb here, and push and slide the cover down.

## Step 2



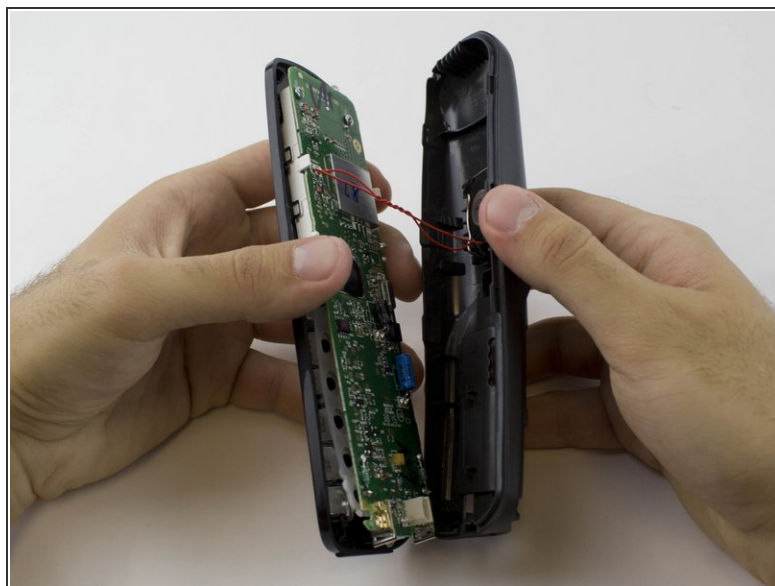
- Unplug the battery by squeezing your hands on the small white plug and lifting it up.
- ⚠ Do not pull on the wire itself because you might damage the wire!
- The battery is now detached and ready to be removed by lifting it out.

## Step 3 — Motherboard



- Remove the two 3.75 mm screws with a PH1 screwdriver.

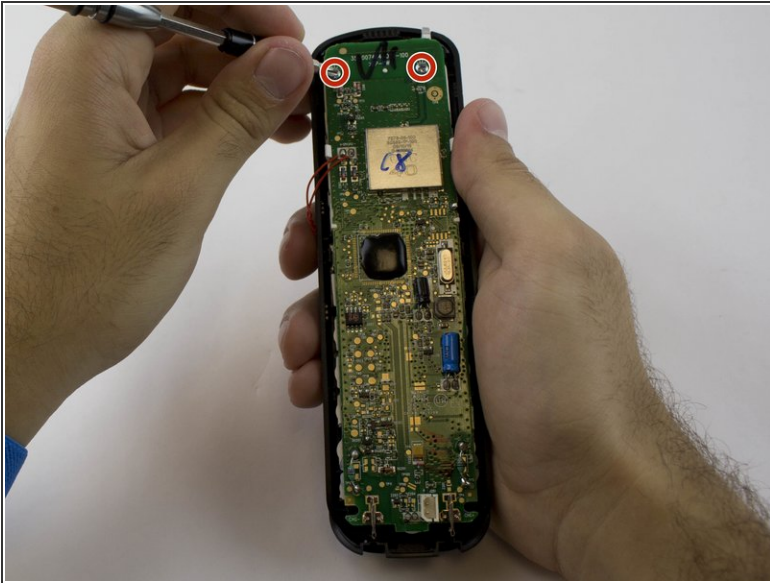
## Step 4



- Use a plastic opening tool to remove the handset case.

⚠ Be careful to not lift the case too far as the ringer cable is attached to the case.

## Step 5

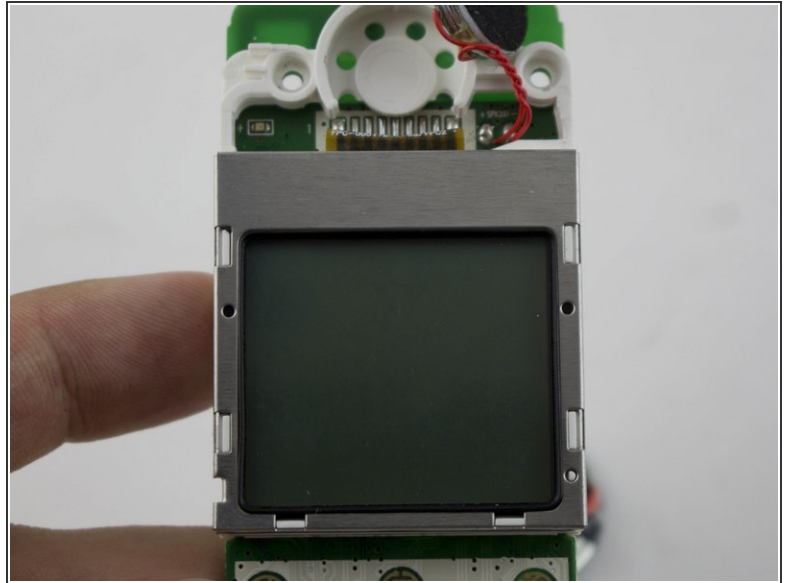


- Remove the two 3.65 mm screws on the motherboard with a PH1 screwdriver.

⚠ Use an anti-static wrist strap to prevent damage to the motherboard.

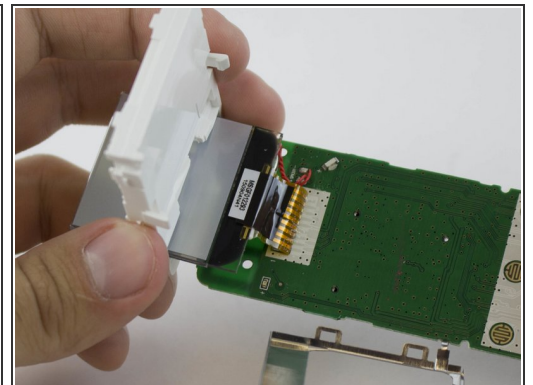
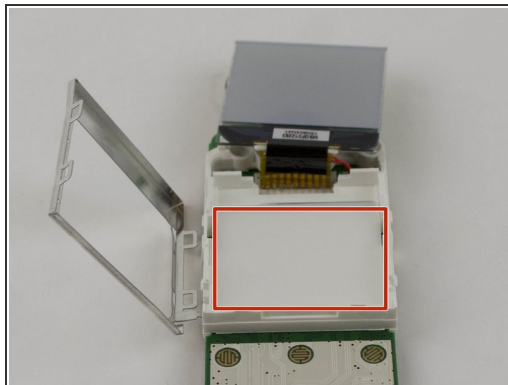


## Step 6 — LCD Screen on Handset



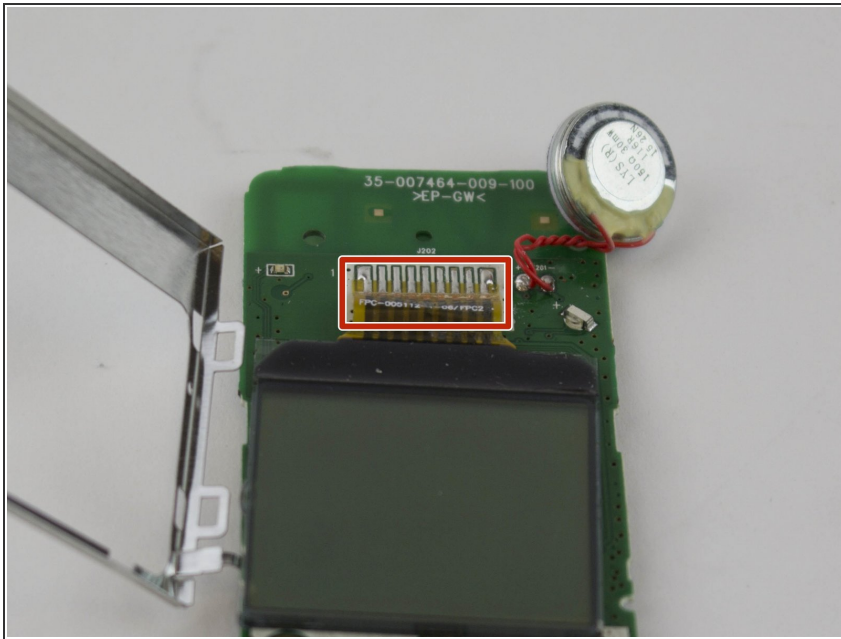
- i** The motherboard is connected to the ringer, which is clipped on to the back plate of your handset.
- Pop off the indicated clip using a pointed tweezer.
  - With the motherboard disconnected from the back plate, turn it over so that the screen is facing you.

## Step 7



- To get to the connection between the display and the motherboard, remove the casing for the display using a plastic opening tool.
- The white casing has a hole cut into it. You are going to slide the display and the speaker through this hole.

## Step 8



- The display has a line of soldered connections to the motherboard. These all need to be undone with a soldering tool, so the screen can be removed.
- ⓘ Please refer to the [How To Solder and Desolder Connections](#) for soldering help.

To reassemble your device, follow these instructions in reverse order.