



ATT Trimline 210M Speaker Replacement

This guide will show you how to replace the speaker in your telephone.

Written By: Corey



INTRODUCTION

You may need to replace the speaker if you are unable to hear people from the other side of the line consistently. The speaker is glued on to the inside of the phone, so you may need to use a superglue or something similar to reattach the new speaker.

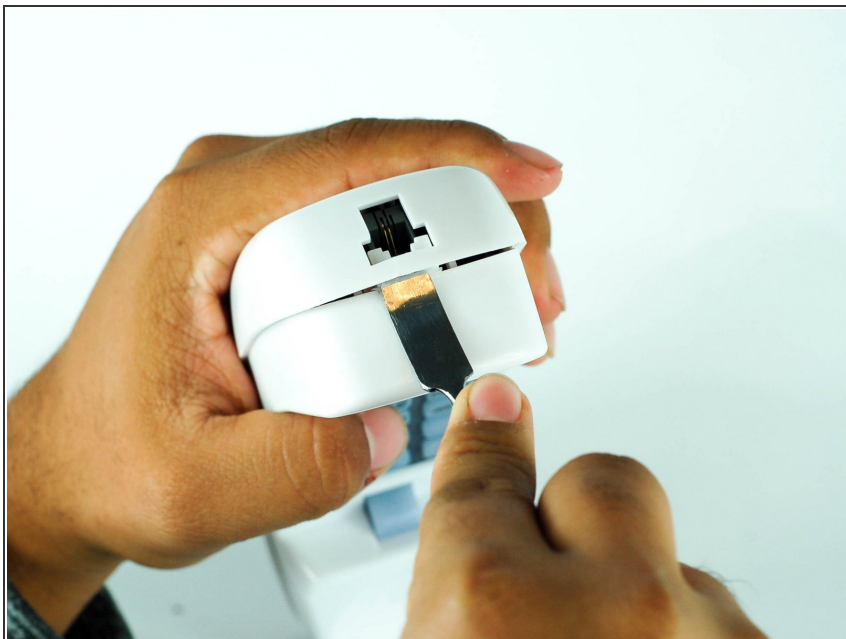


TOOLS:


- [Metal Spudger](#) (1)
- [1/4" Nut Driver](#) (1)
- [iOpener](#) (1)
- [JIS Driver Set](#) (1)

J1

Step 1 — ATT Trimline 210M Back Cover Disassembly



- Open up the phone with a metal spudger, sticking it in the bottom near the cord jack entry.

 Be careful with the amount of force you use, or the plastic may crack.

Step 2



- Pull up on the spudger while simultaneously pulling up the top shell of the phone.

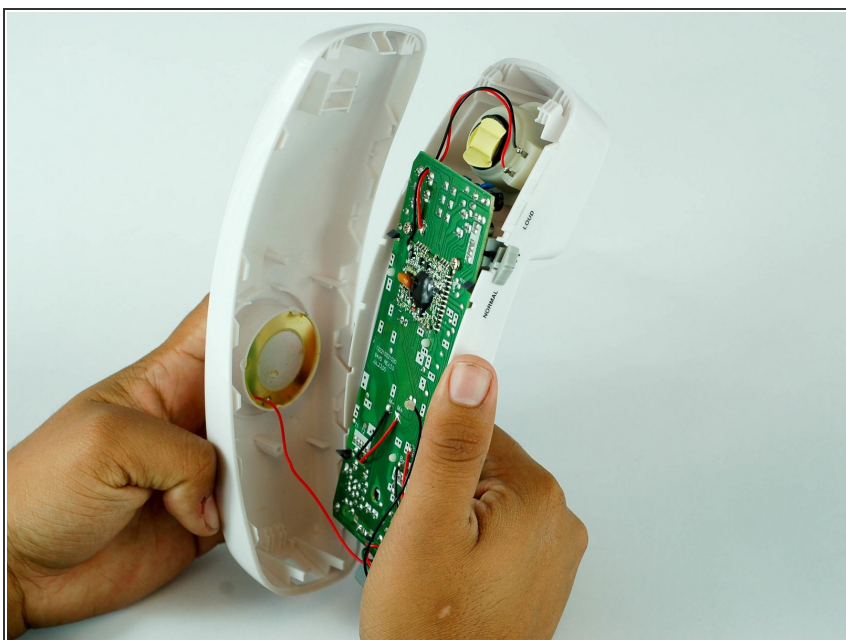
Step 3



- After unclipping the bottom half of the shell, pull upward from the position shown in the picture to detach the top half of the shell.

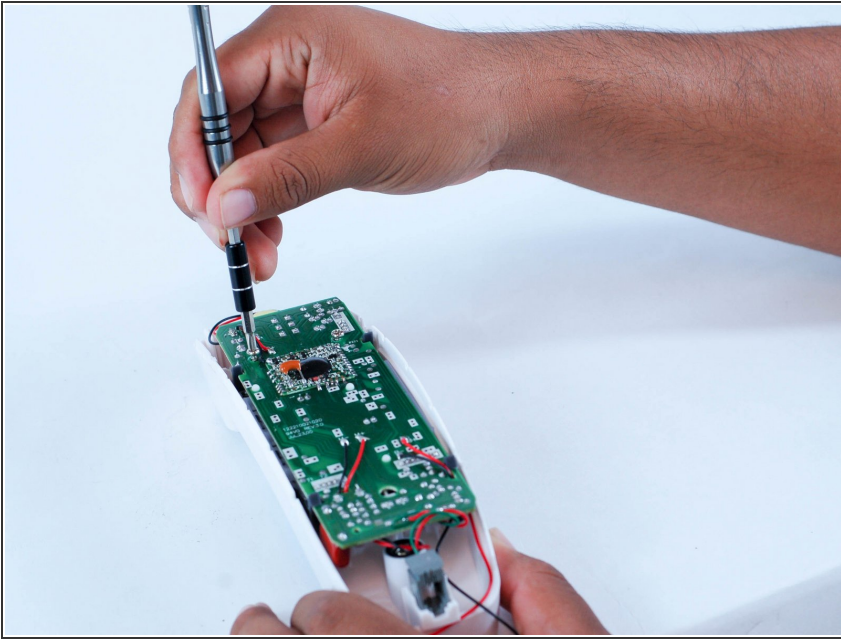
⚠ The cord connecting the speaker is short, and may detach if not done carefully.

Step 4



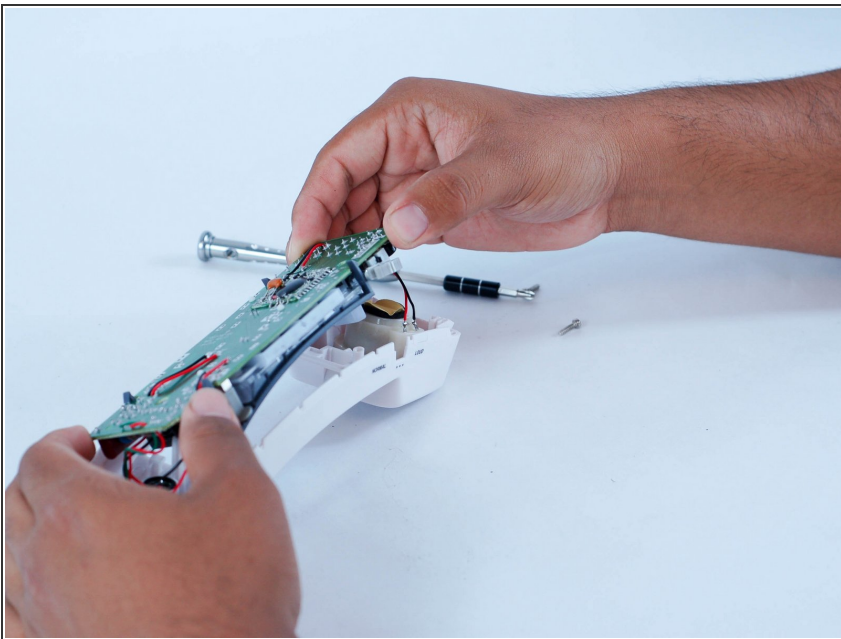
- You will have the motherboard and speaker exposed to you.

Step 5 — ATT Trimline 210M Motherboard Disassembly



- Remove the two 10 mm screws using the 1/4" driver and a J1 Phillips screw head.

Step 6



- Carefully move the motherboard up to remove it.

Step 7 — Speaker



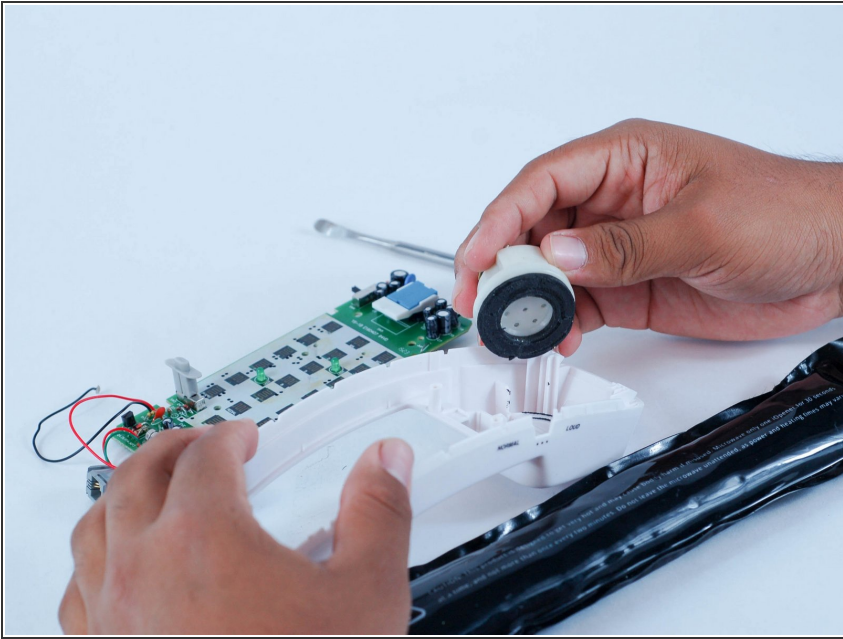
- Carefully detach the black and red wires

Step 8



- Use the iFixit iOpener to warm the adhesive from the front of the phone, in order to remove the speaker from the face plate safely.

Step 9



- Remove speaker

To reassemble your device, follow these instructions in reverse order.