



AXIOO Pico M1110 PJM Hard Drive Replacement

Replace the Hard Drive.

Written By: Cakra Diaz





TOOLS:

- [Phillips #0 Screwdriver](#) (1)
- [Flathead 3/32" or 2.5 mm Screwdriver](#) (1)
- [Tweezers](#) (1)

Step 1 — Underside



- Identify the battery locker.
- Set the righthand locker to unlock.
- Pull the battery while setting the lefthand locker to unlock.

Step 2



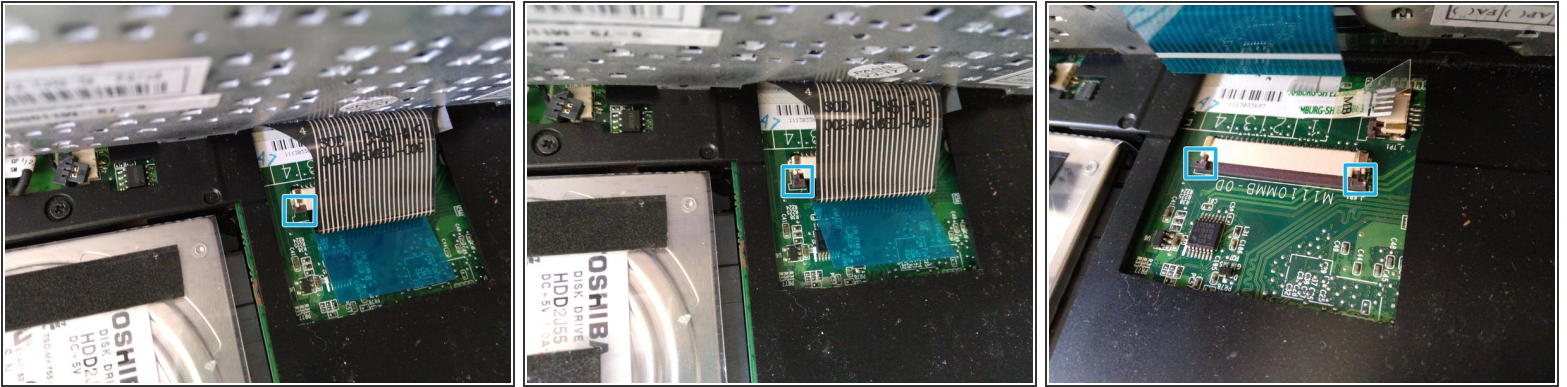
- ★ Remove the battery.

Step 3 — Keyboard



- Identify these:
 - 4 keyboard clipper
- Remove the keyboard clipper by gently twisting them till pops out.
 - ❗ Use a [small flathead screwdriver](#) to twist easier.
- Lift the keyboard up by pivoting on the bottom side.
 - ❗ Don't lift it too high up, because beneath it there's the keyboard ZIF connector still connected; refer to the next step.

Step 4



- Identify this:
 - The ZIF connector locker
- Gently pull the locker out.
 - ❗ Use a pair of [tweezers](#) to make it easier to pull it out.
 - ⚠ Don't forget the other side too!
- Remove the ZIF connector.
- ☑ Remove the keyboard.

Step 5 — Hard Drive



- Remove the following screw:
 - 1 long Philips #0 screw
- Remove the hard drive holder.
- Pull the plastic tab away from the socket.
- ☑ Remove the Hard Drive.

To reassemble your device, follow these instructions in reverse order.