



AXIS 213 PTZ Network Camera Capacitor Replacement

The "NO VIDEO"-error (topleft corner) is common in these cams. 6 caps in the video module will be replaced. Take care : extremely fine soldering involved !

Written By: Stefan Van pellicom



INTRODUCTION

A lot of these camera's seem to come down with a **"NO VIDEO" error** in the upper left corner of the preview window. This is due to the failure of one or more capacitors on one of the video module's interface boards. Probably due to a combination of rather high temperature inside, and many years of use.

It is hard to determine exactly which capacitor is involved. But knowing that any one of the others might fail next, it is better to replace the lot while you're in there ...

The soldering is not for the faint hearted, and requires much more than entry level experience !! You may want to prepare everything, and seek help for the final soldering step ...

- Edit 7 jan 2016 : due to quite a few requests, I have assembled a few sets with the necessary capacitors that I can send by mail. Just ask !
- Edit 16 april 2017 : due to quite a few requests, a gain in experience, and several equipment upgrades, I have decided to offer a repair service. Just ask !



TOOLS:

- [Phillips #0 Screwdriver](#) (1)
- [Tweezers](#) (1)
- [Flush Wire Cutters](#) (1)



PARTS:

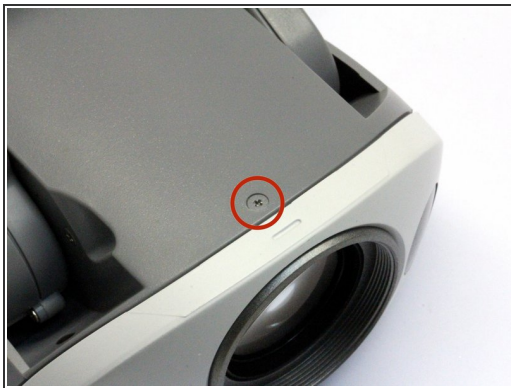
- [As mentioned in step 13](#) (1)

Step 1 — Let's fix this !



- This the AXIS 213 in which the "NO VIDEO" error occurs. We will get to the 6 capacitors to be replaced.

Step 2



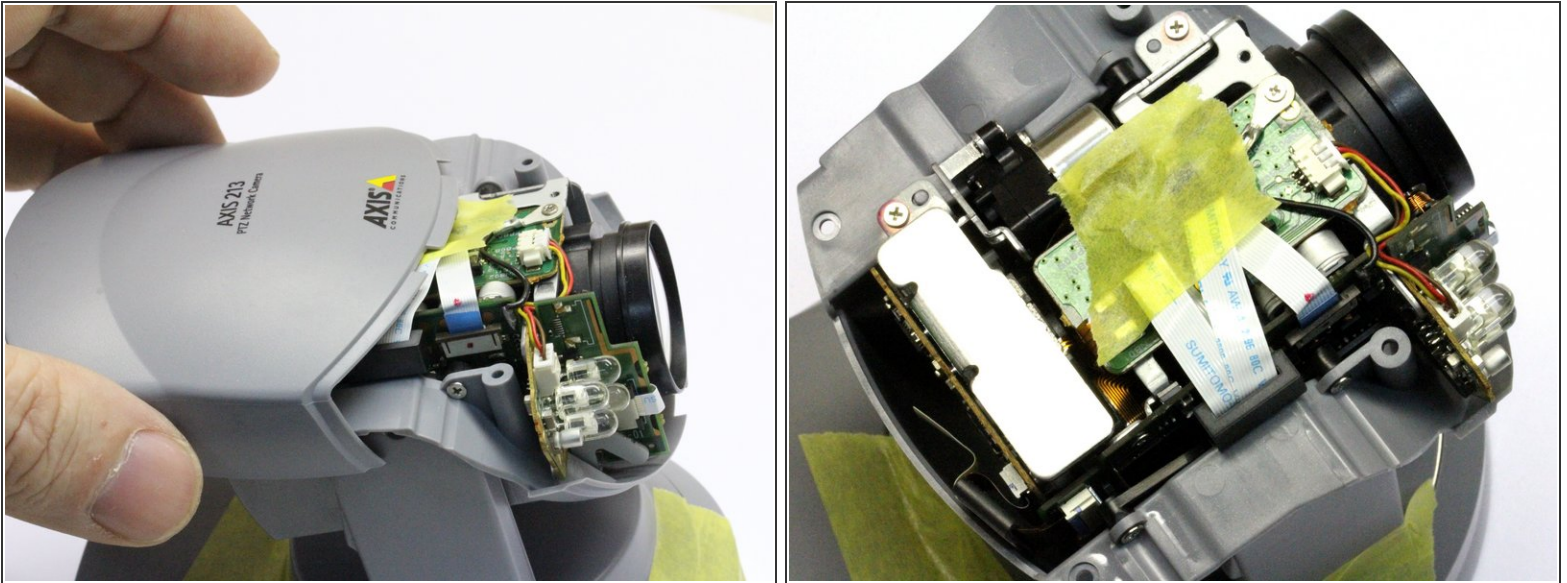
- Take out the screw under the lens. Gently tilt front upwards and remove.

Step 3



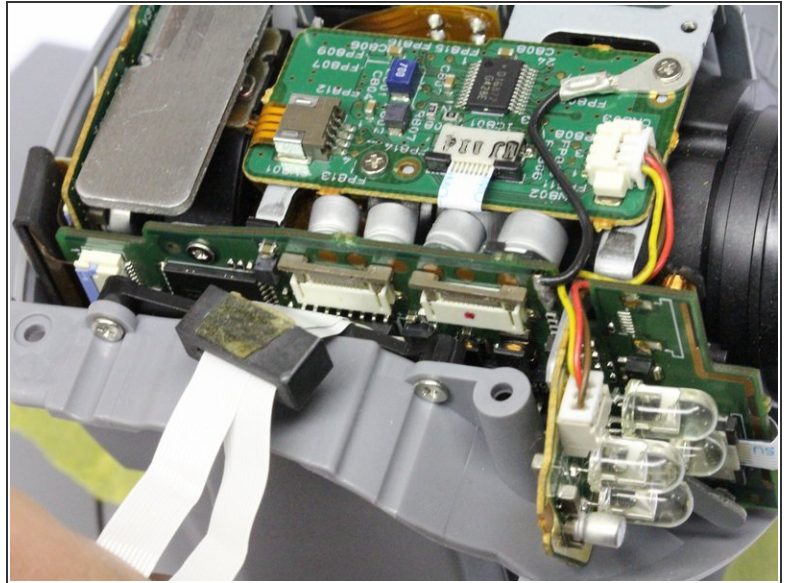
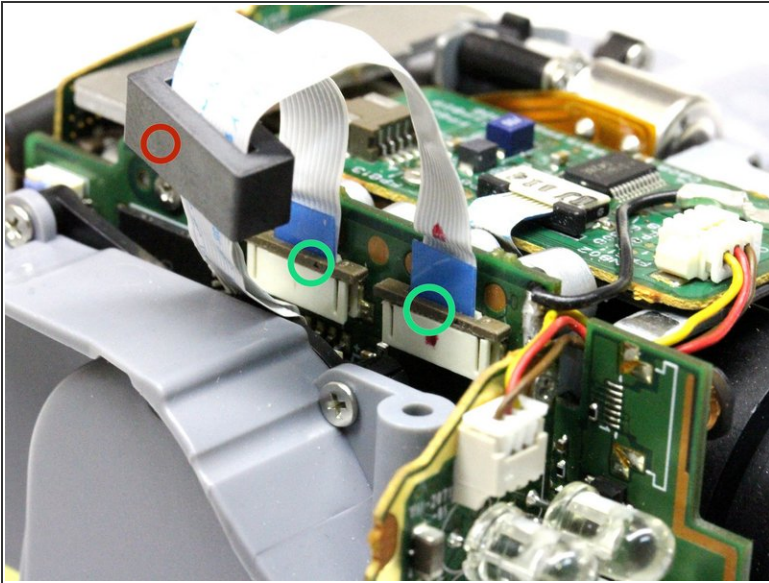
- Take out the 2 screws (*painted grey*) out at the back end bottom.
- Take out the 2 screws at the front end bottom.
- ☑ You now have 5 screws of which 3 with grey painted heads. For reassembly, use them wisely. :)

Step 4



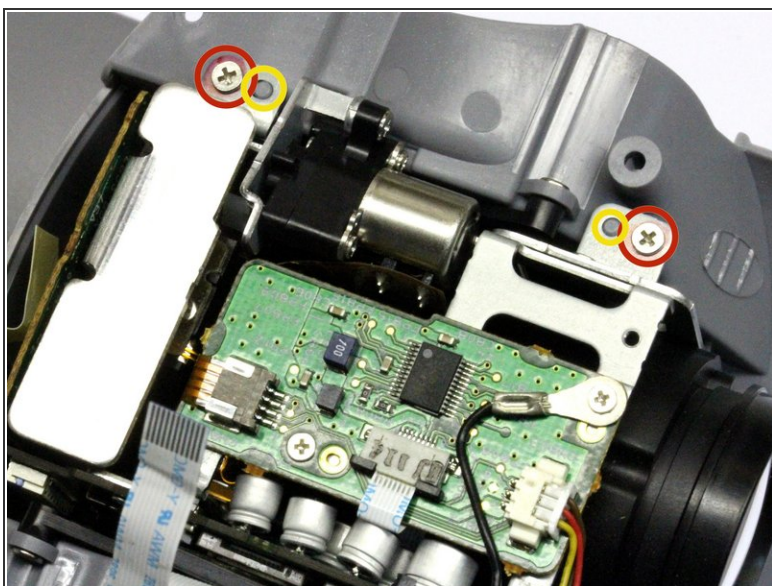
- Gently lift the housing top, and slide it back while lifting.
- You will find the whole camera module wrapped in thick cellophane. For reasons of heat dispersal and prolonged life, I would recommend disposing of it during following steps. But only if your camera is for indoor use ! Outdoor cams might benefit from the wrapping, containing the heat in the camera module, preventing condensation/corrosion.
- Optional : for reassembly, some adhesive tape might come in handy to hold down the flat cables.

Step 5



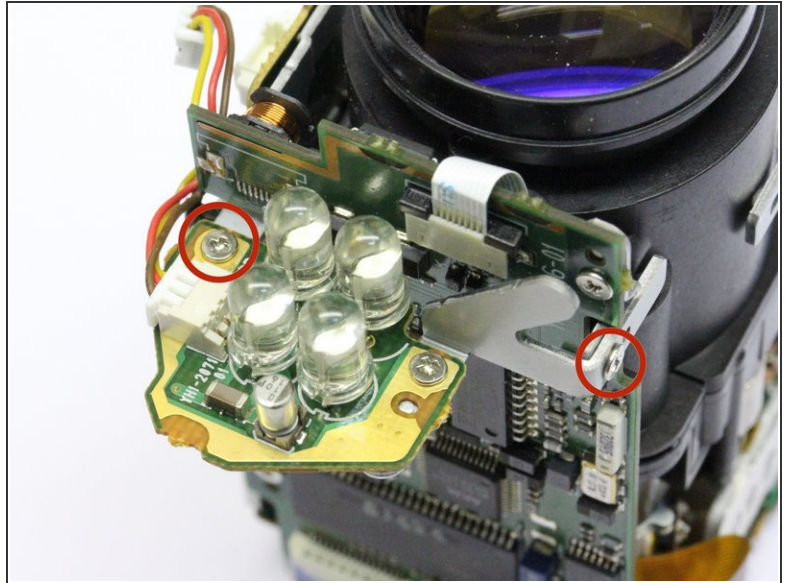
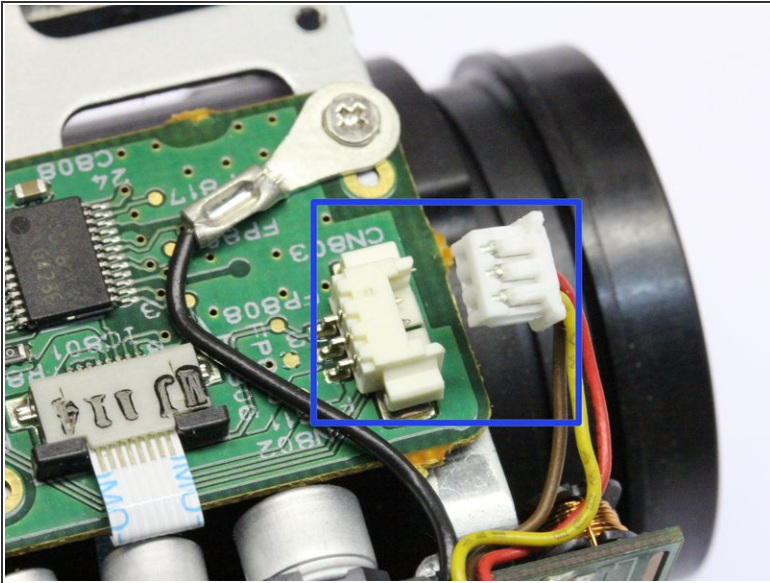
- We will now disconnect the 2 flatcables that connect the camera module to the camera base.
- The ferrite core is attached to the left cable connector with some 2-sided sticky tape. Gently pry it loose so it can slide upward along the cables. Now is a good time to mark which cable goes in which socket.
- The 2 brown/white cable connectors can now be reached. The brown part has to slide UP. Pry it loose with a very fine instrument : bit on the left, bit on the right, and repeat until loose. It should remain seated in the connector body. If it's no longer clamped, you're far enough ! FRAGILE !
- Gently bend the ribbons to the side, so the camera module is exposed.

Step 6



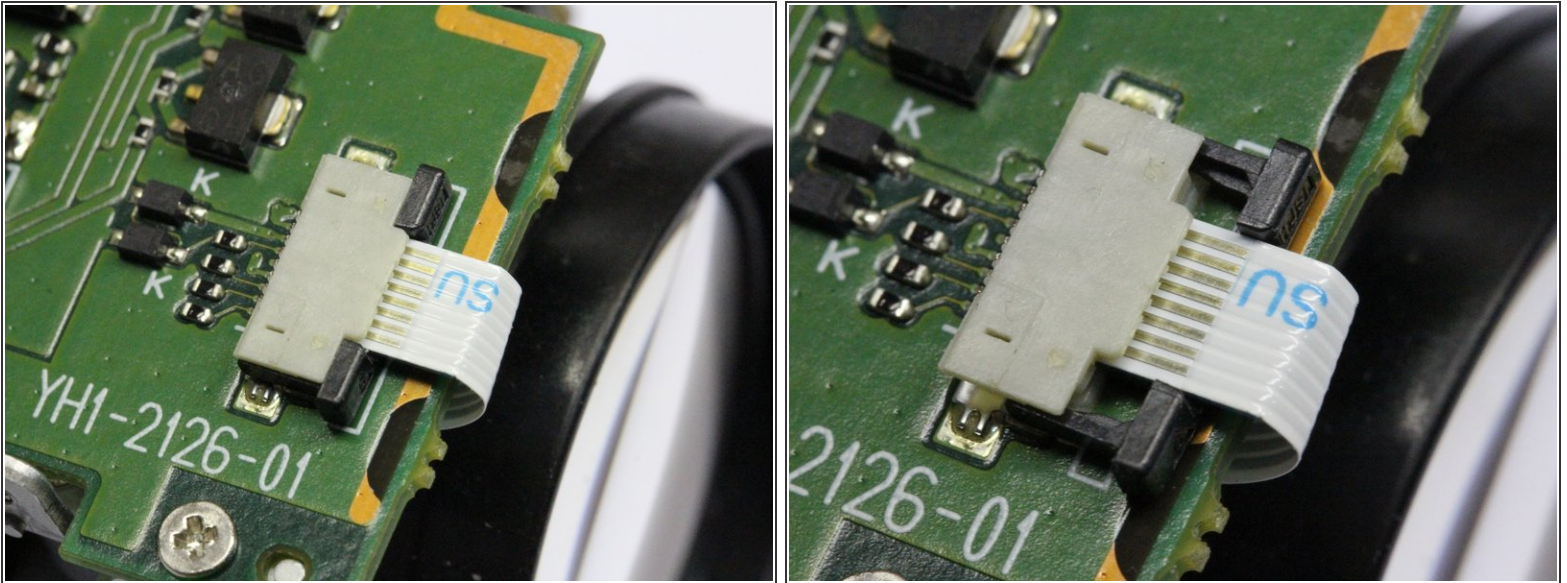
- Take out the two screws holding the camera module to the plastic housing.
- You can now lift the whole camera module straight up to remove it from the housing.
- At reassembly, before tightening the screws, make sure the round plastic notches are well seated in the metal bracket's holes.

Step 7



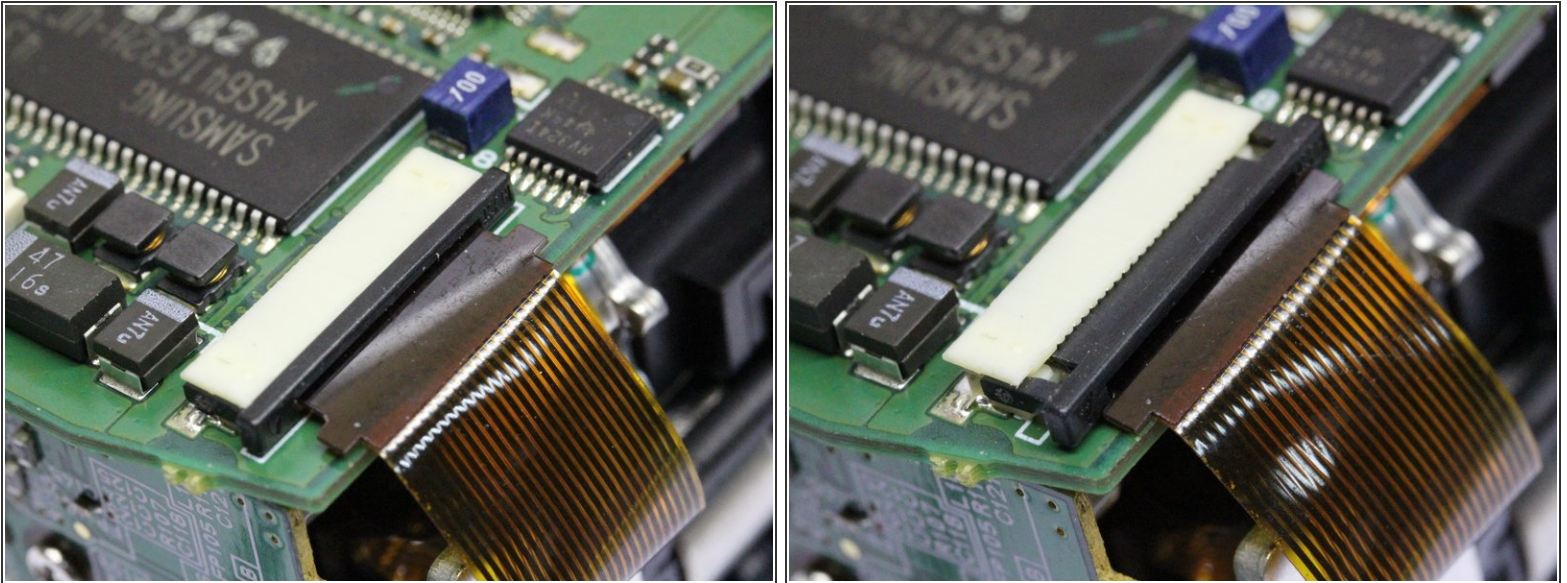
- Now the infrared light module is to be removed in order to gain acces to the board we need.
- Gently slide out the white connector.
- Remove the two screws, and remove the light module.

Step 8



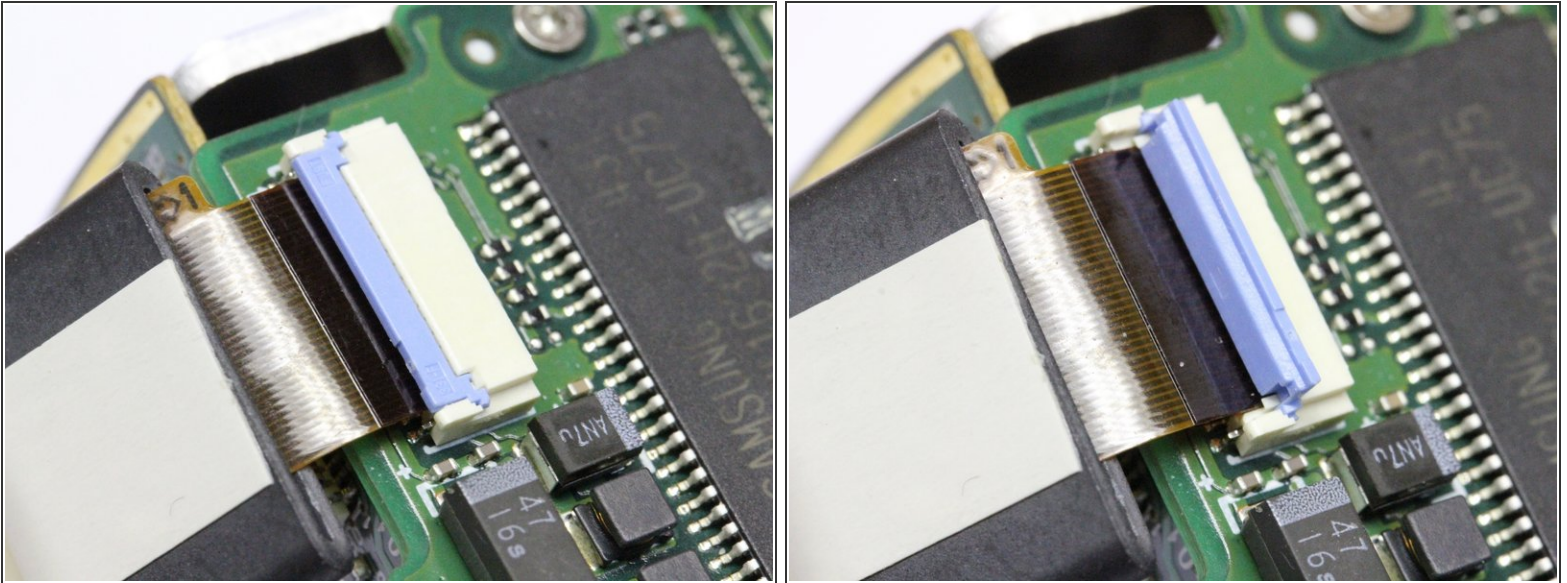
- Disconnect the right ribbon cable. Hook your fingernails behind the right and left notches of the black connector part, and pull it towards the white ribbon cable with even and L/R balanced force until loose. FRAGILE ! The cable will slide out easily.
- For reassembly : notice this cable is ON TOP of the black connector wedge. Insert the cable as intended, and push the black wedge back in place, again balancing force left and right.

Step 9



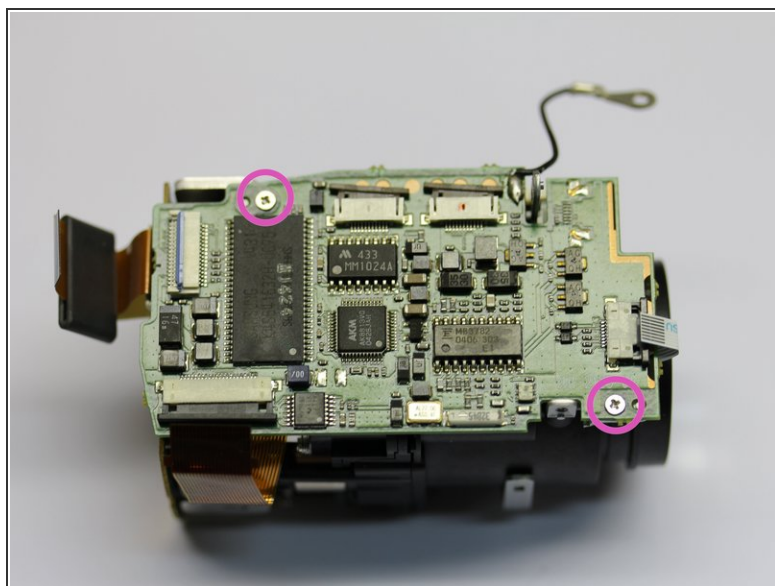
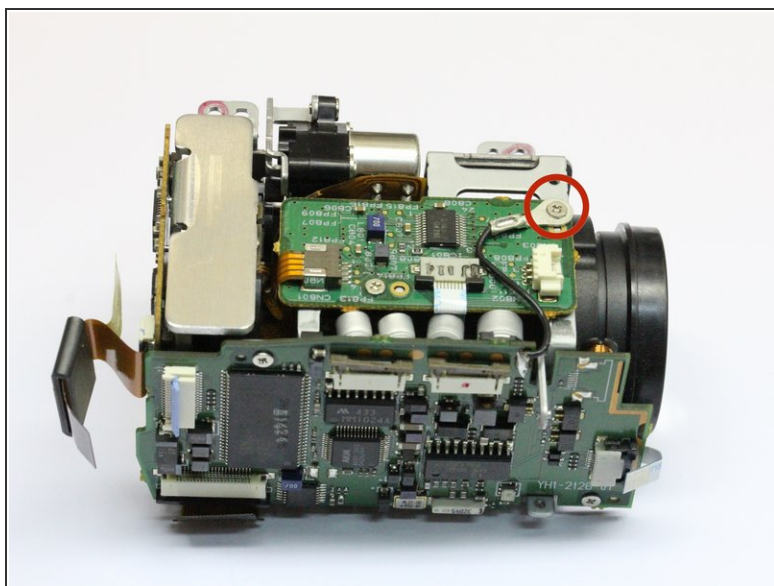
- Disconnect the bottom left ribbon cable. Hook your fingernails behind the right and left notches of the black connector part, and pull it towards the brown ribbon cable with even and L/R balanced force until loose. FRAGILE ! The cable will slide out easily.
- For reassembly : notice this cable is UNDER the black connector wedge. Put the cable back in place, and push the black wedge back in, again balancing force left and right.

Step 10



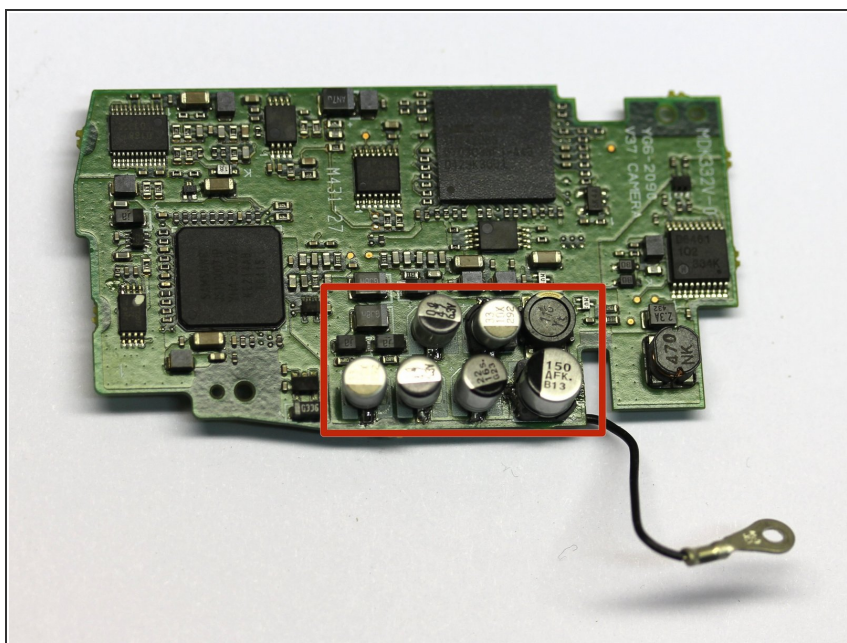
- To disconnect the left top ribbon cable, tilt up the blue connector part, and hinge it up 90°. The cable will slide out easily.
- To reassemble : position the cable and tilt the blue part down again.

Step 11



- Remove the screw from the ground terminal.
- Remove the two screws holding the board.

Step 12



- The board is now free for replacing the 6 capacitors.

Step 13



- These are the capacitors to replace. PLAN in **which order** you will do the resoldering in the last step. Do it now, while you can still try all positions. Make sure your tip doesn't touch anywhere except on the spot where you want to apply the heat ...
- To remove the old caps : use a pair of fine tipped cutting pliers, and cut the capacitors as low as you can. The bottom of the can is encased in a rubberlike material, and is easily removed using tweezers.
- Then de-solder the capacitor's legs still attached to the circuit board. Provide a new clean patch of solder to the soldering islands.
- Now install the new capacitors. Mind you, this is NOT to be done with your average soldering iron. You will need a 0,8mm tip or smaller, or SMD tweezers. And you'd better have darn good eyesight ... :)
- Hint : soldering these caps is much easier with the black plastic seats removed from under them ... They are easy to crack open and discard.
- Edit 7 jan 2016 : due to quite a few requests, I have assembled a few sets with these capacitors that I can send by mail. Just ask !

- Edit 16 april 2017 : due to quite a few requests, a gain in experience, and several equipment upgrades, I have decided to offer a repair service. Just ask !

Step 14



- Work your way up again, assembling until and including step 5.
- Now test the thing.
- A job well done ! :) Lay back and relax.

To reassemble your device, follow these instructions in reverse order.