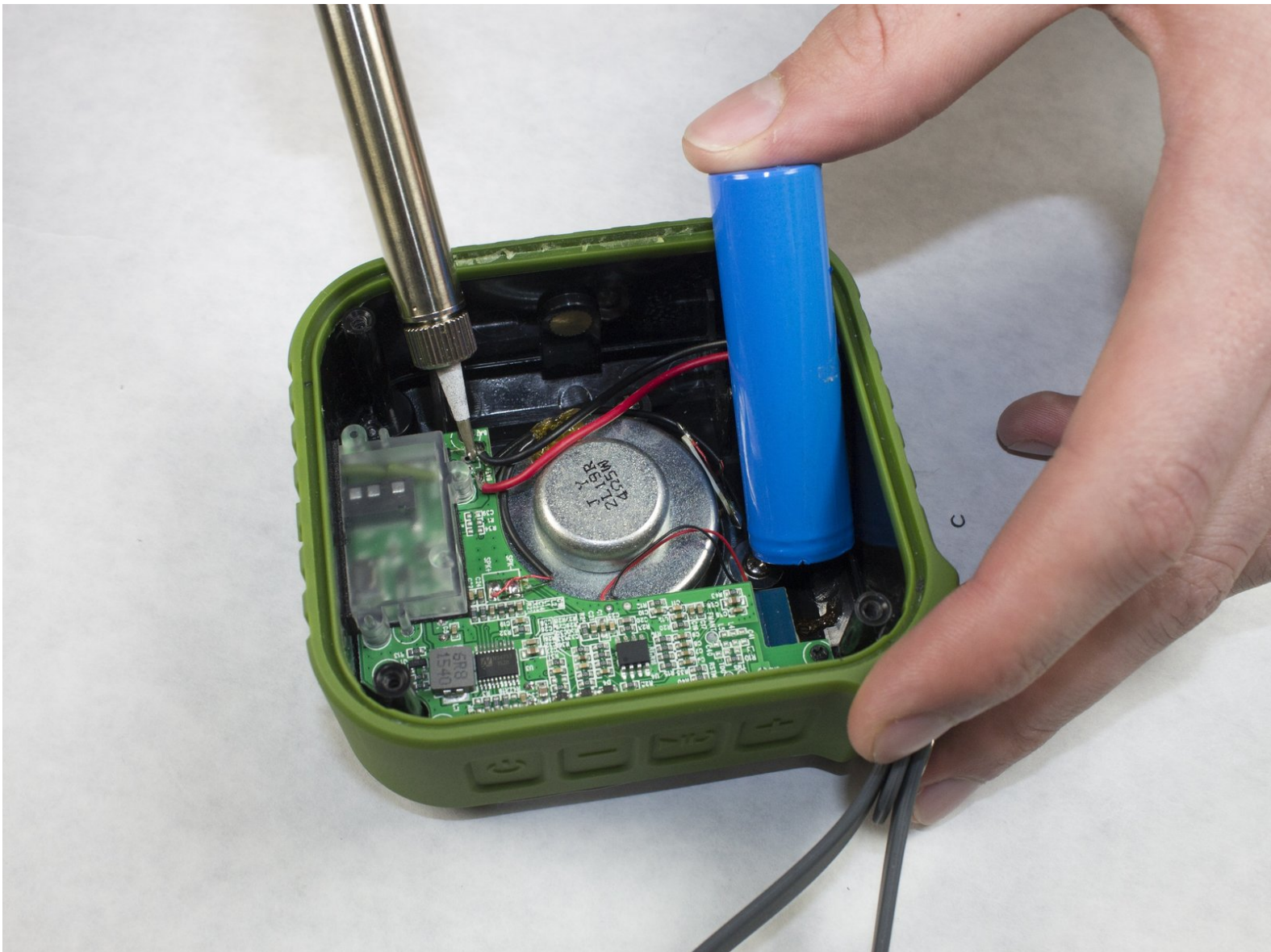




AYL SoundFit Battery Replacement

Replace the battery of your AYL SoundFit.

Written By: Dustin Moore



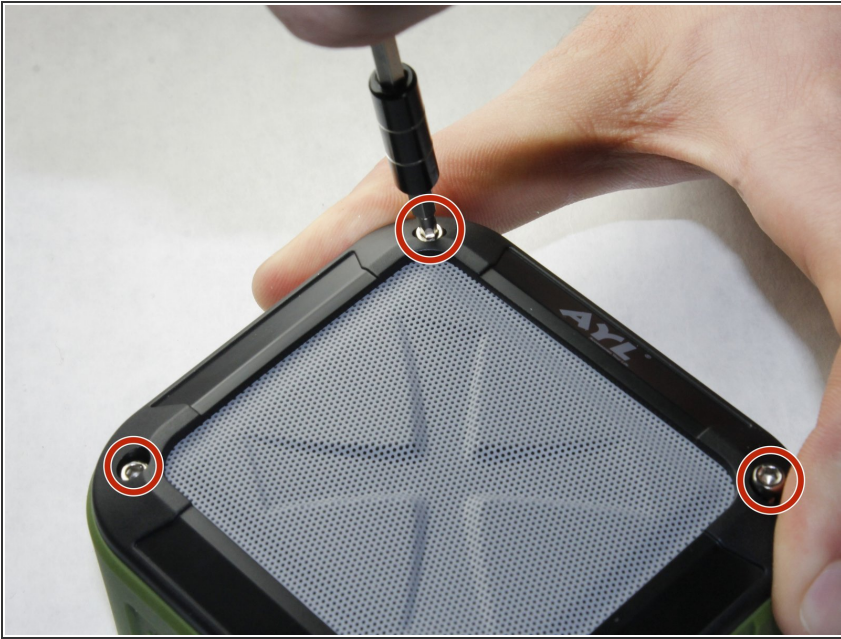
INTRODUCTION

Use this guide to replace the battery of your AYL SoundFit. If your device's battery won't hold a charge, replacing the battery may resolve the problem.

TOOLS:

- [2.5 mm Hex Bit](#) (1)
 - [Spudger](#) (1)
 - [Phillips #0 Screwdriver](#) (1)
 - [Solder](#) (1)
 - [Soldering Iron](#) (1)
-

Step 1 — Battery



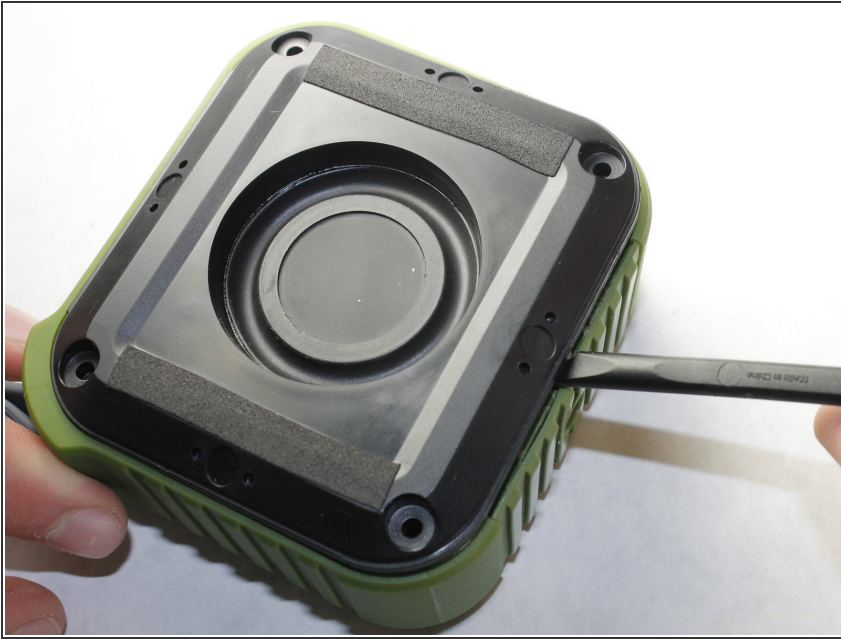
- Remove the four hex screws on the top of the device using a 2.5 hex screwdriver.

Step 2



- Place a spudger between the black plastic cover and the green case.
- Pry the black cover away from the main casing and remove the cover.

Step 3



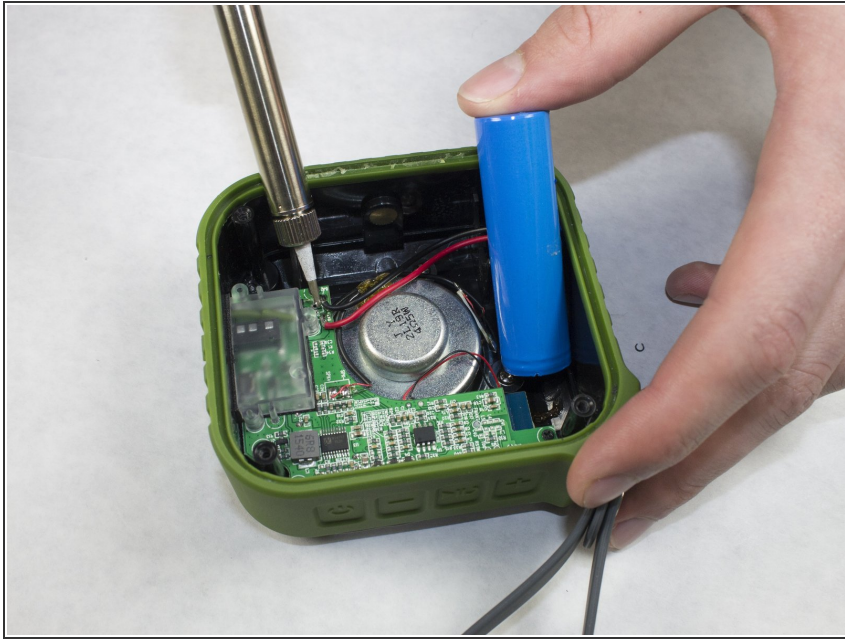
- Place a spudger between the black housing, which contains the woofer, and the outer rubber casing.
- Pry the housing away from the body to reveal the motherboard, speaker, and battery.

Step 4



- Remove the two Phillips #00 screws securing the battery casing.
- Remove the battery case to reveal the battery.

Step 5



- Desolder the positive and negative battery contacts from the motherboard.
- Remove the battery from the device.

To reassemble your device, follow these instructions in reverse order.