



AYL SoundFit Speaker Replacement

Replace the speaker in your AYL SoundFit.

Written By: Sajal Kherde



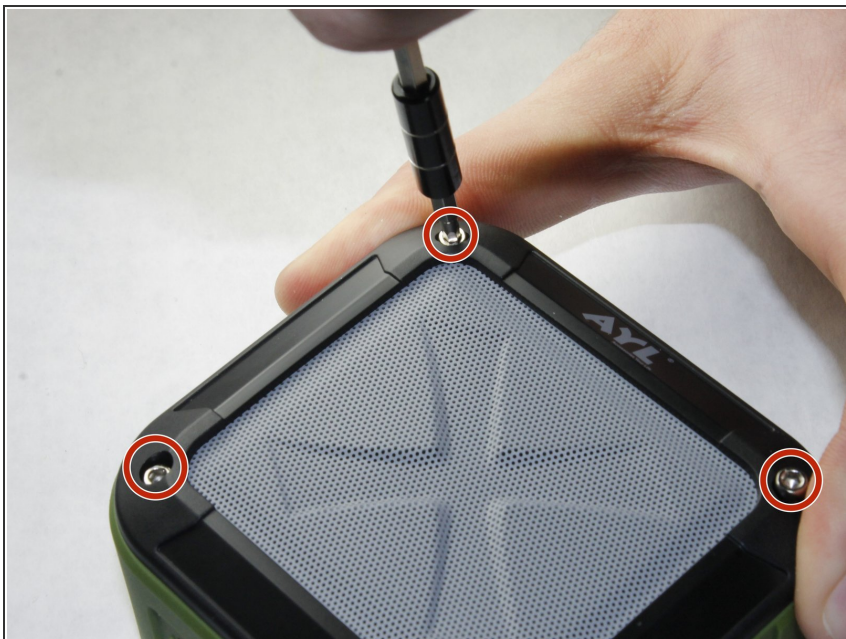
INTRODUCTION

Use this guide to replace the speaker of the AYL SoundFit.

TOOLS:

- [Pro Tech Toolkit](#) (1)
 - [Heavy-Duty Spudger](#) (1)
 - [Phillips #0 Screwdriver](#) (1)
 - [Soldering Workstation](#) (1)
 - [2.5 mm Hex Bit](#) (1)
 - [Solder](#) (1)
 - [Soldering Iron](#) (1)
-

Step 1 — Motherboard



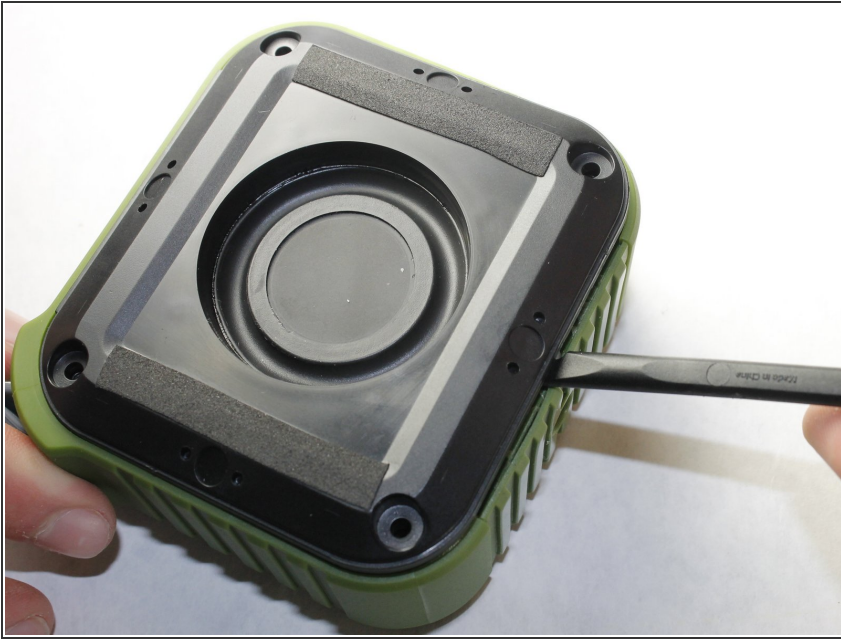
- Unscrew the four hex screws on the top of the device using a 2.5mm hex screwdriver.

Step 2



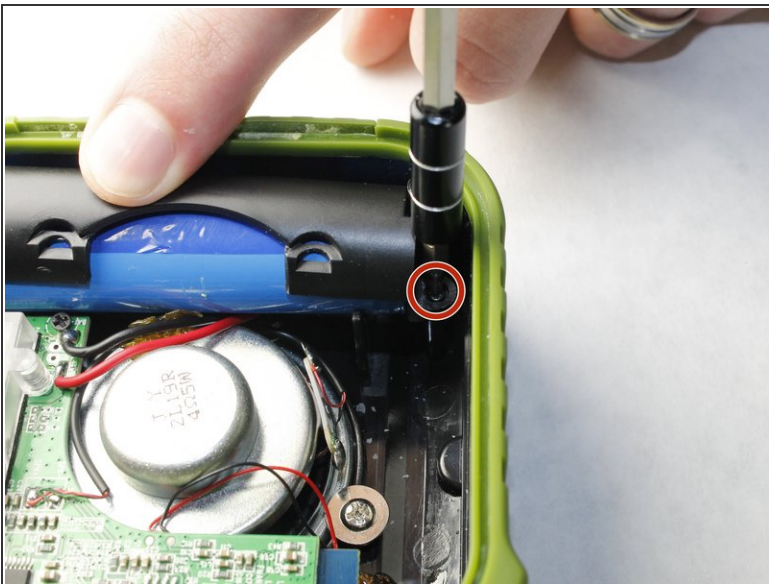
- Place a spudger between the black plastic cover and the green case.
- Pry the black cover away from the main casing and remove the cover.

Step 3



- Place the spudger tool between the black housing, which contains the woofer, and the outer rubber casing.
- Pry the housing away from the body to reveal the motherboard, speaker, and battery.

Step 4



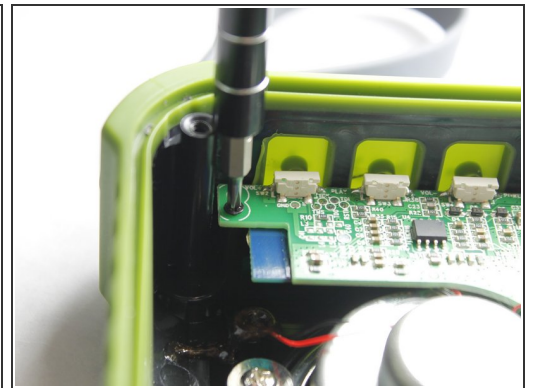
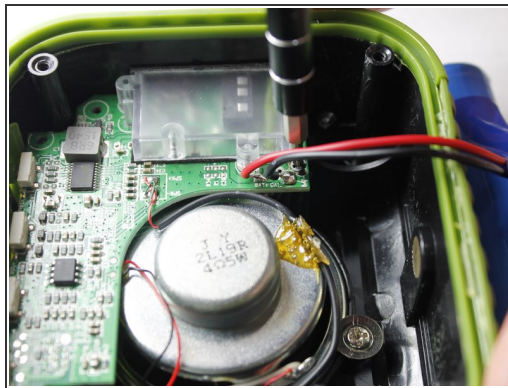
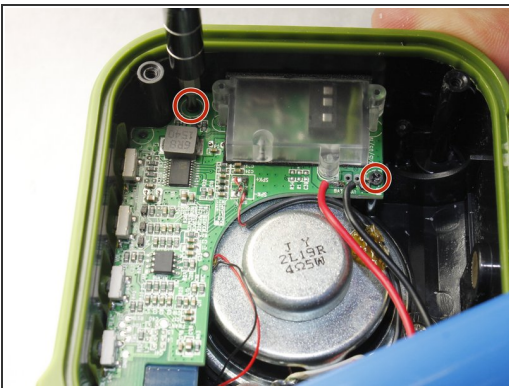
- Remove the two Phillips screws which are holding the battery casing on the housing using a PH00 Phillips screwdriver.
- Remove the battery case to reveal the battery.

Step 5



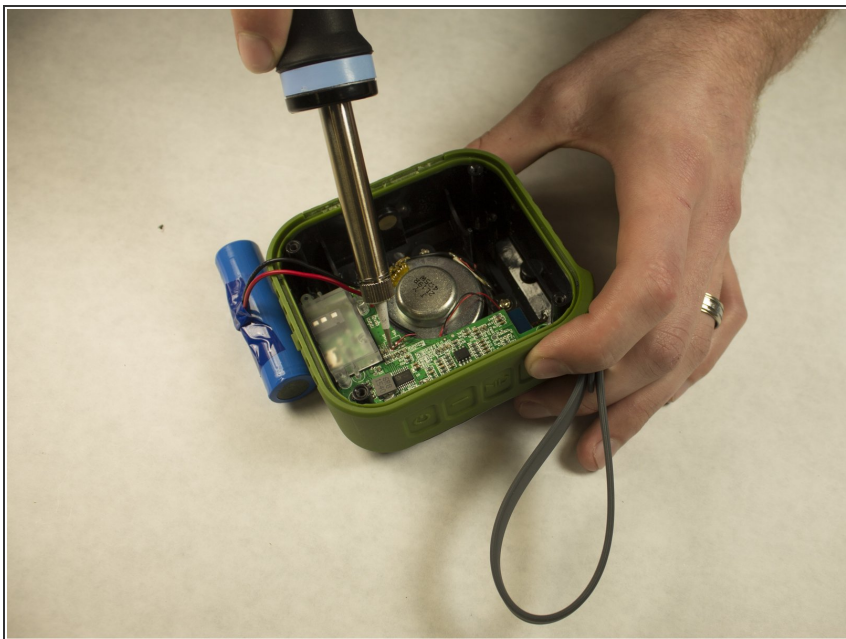
- Using a soldering iron, heat up and remove the positive and negative battery contacts from the motherboard.

Step 6



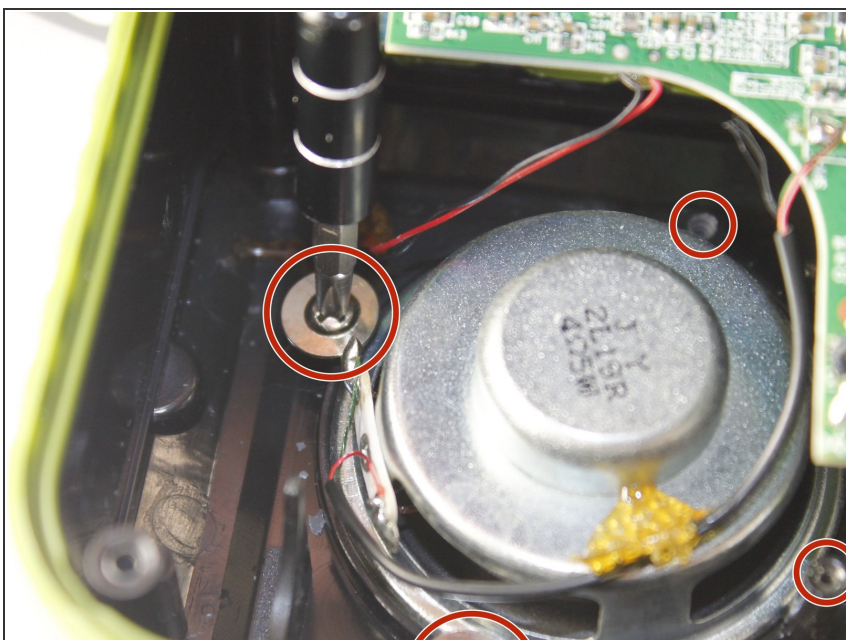
- Remove the three Phillips screws which are holding the motherboard to the base using a PH00 Phillips screwdriver.
- The motherboard can now be wiggled free from the base.

Step 7 — Speaker



- Using a soldering iron, heat up and remove the positive and negative wire contacts from the motherboard.

Step 8



- Remove four Phillips #1 screws to detach the speaker from the module.
- Extract the speaker from the body of the AYL SoundFit.

To reassemble your device, follow these instructions in reverse order.