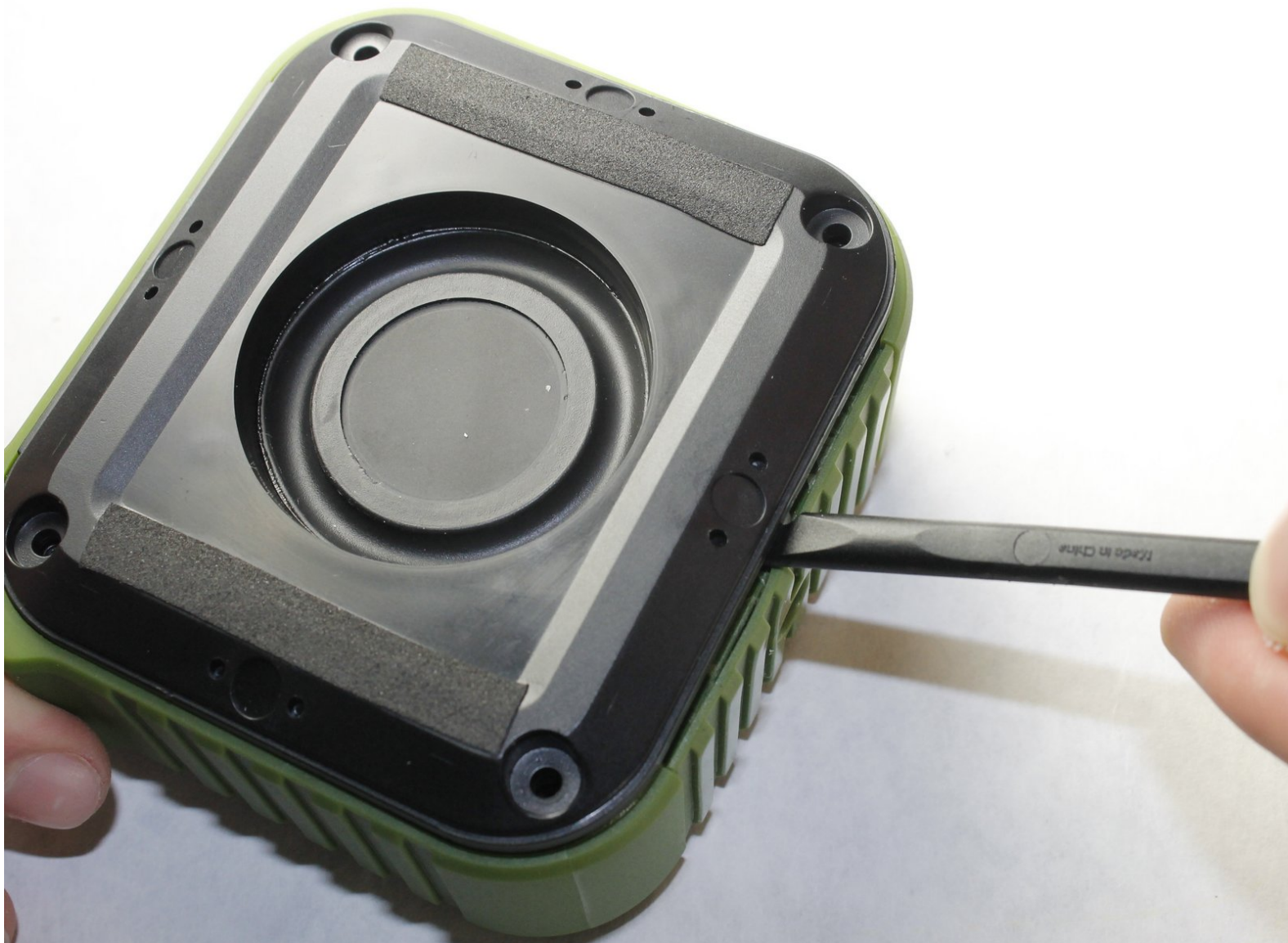




# AYL SoundFit Speaker Woofer Replacement

Replace the speaker woofers on your AYL SoundFit.

Written By: Taylor Shuler



# INTRODUCTION

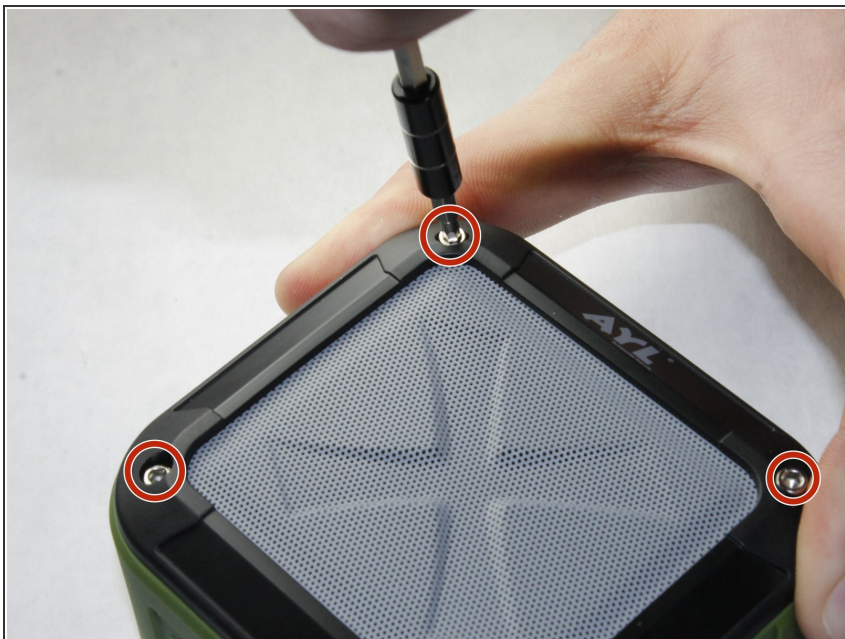
This guide will show how to replace the speaker woofers on the AYL SoundFit. There is one on each side of the device. With just a screwdriver, the speaker woofers can be removed and replaced in a few simple steps.



## TOOLS:

- [2.5 mm Hex Bit](#) (1)
  - [Spudger](#) (1)
-

## Step 1 — Speaker Woofer



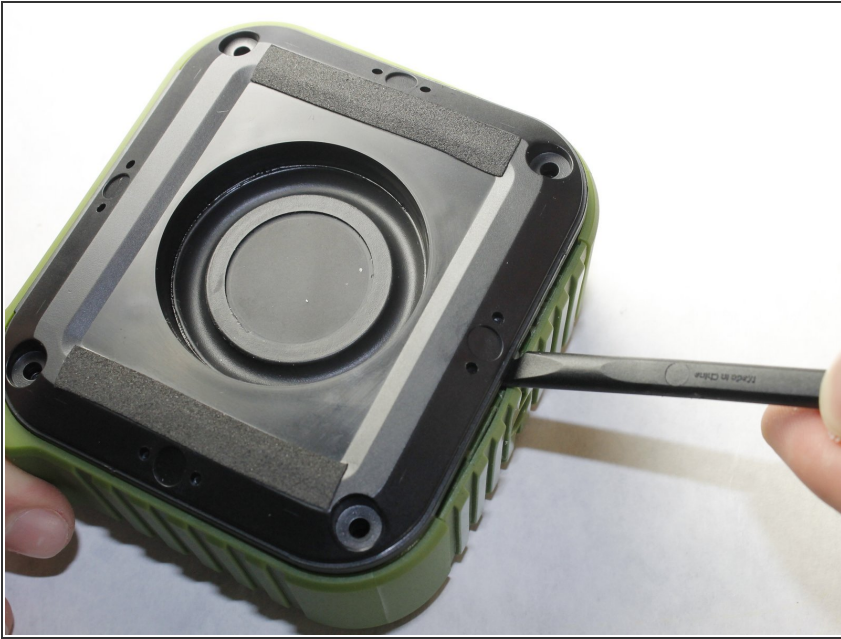
- Remove each of the 4 screws on the front cover using the 2.5mm Hex Bit in the screwdriver.

## Step 2



- Remove the cover with a spudger.

### Step 3



- Remove the inner panel using a spudger.
- ★ During reassembly, place the new inner panel in the same position as the original panel.

To reassemble your device, follow these instructions in reverse order.