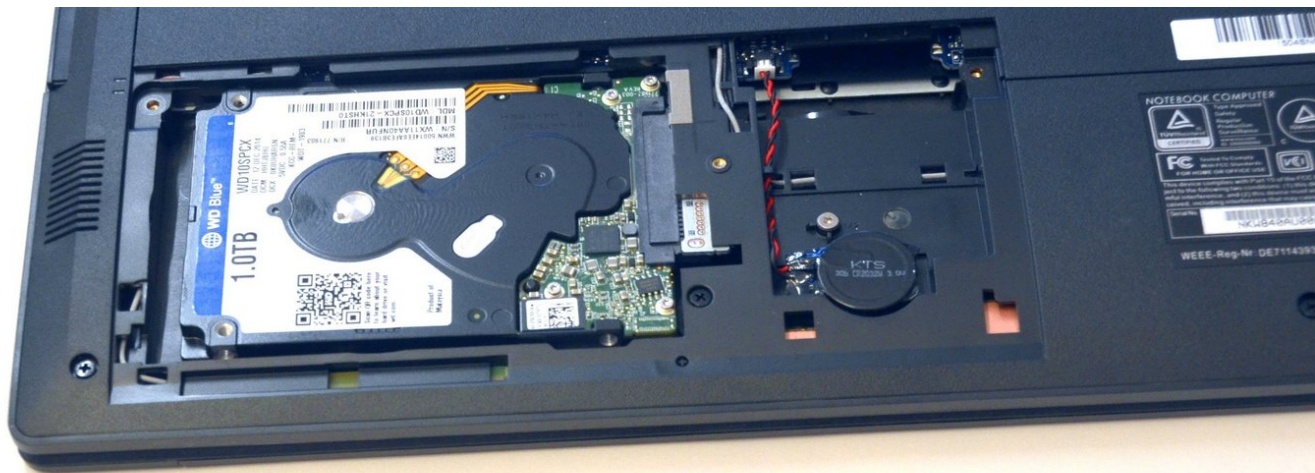




Access to Components 1

HDD hard drive access and BIOS stack

Written By: Felice Suglia



INTRODUCTION

HDD hard drive access and BIOS stack



TOOLS:

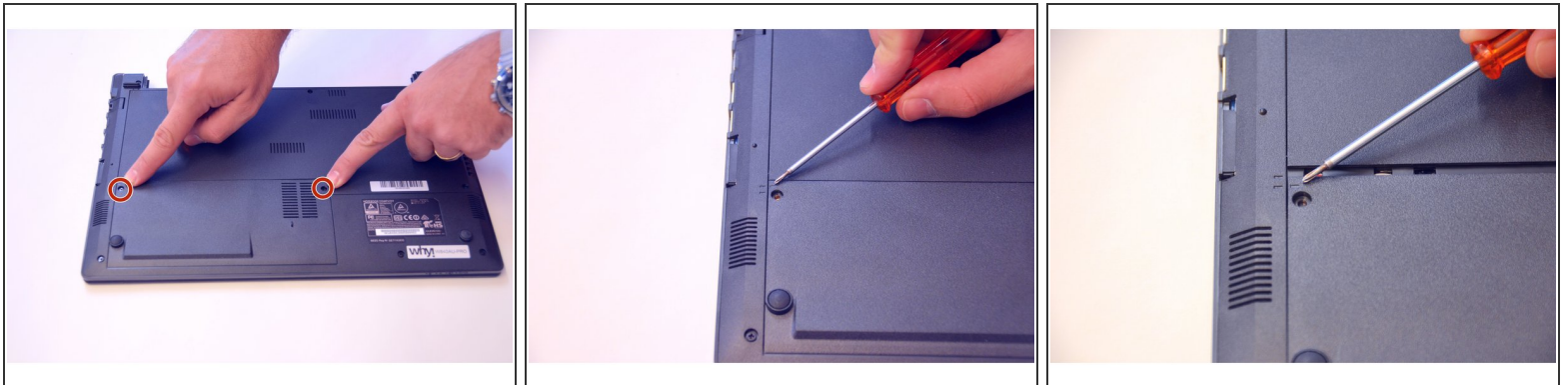
- [Phillips #0 Screwdriver](#) (1)
-

Step 1 — Battery



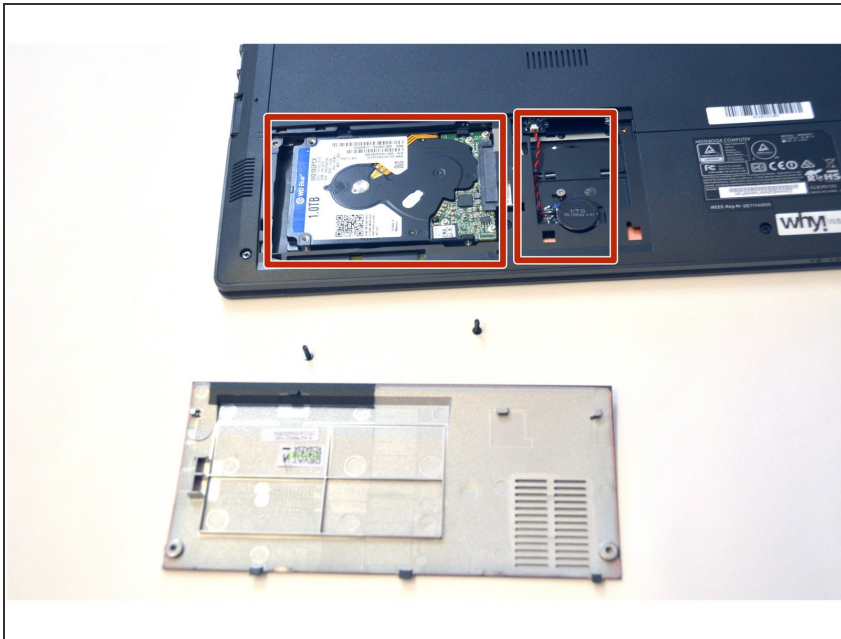
- Unlock the battery latch on the right.
- Unlock the battery lock on the left.
- Remove the battery pack from its slot.

Step 2 — Access to Components 1



- Using the Philips # 0 screwdriver, unscrew the 2 screws from the bottom cover.
- Check the marks indicating the direction in which the cover must be removed.
- Remove the bottom cover by removing it in the direction of the markers.

Step 3



- HDD hard disk and BIOS stack components appear.

For reassembly, follow the instructions above in the reverse order.