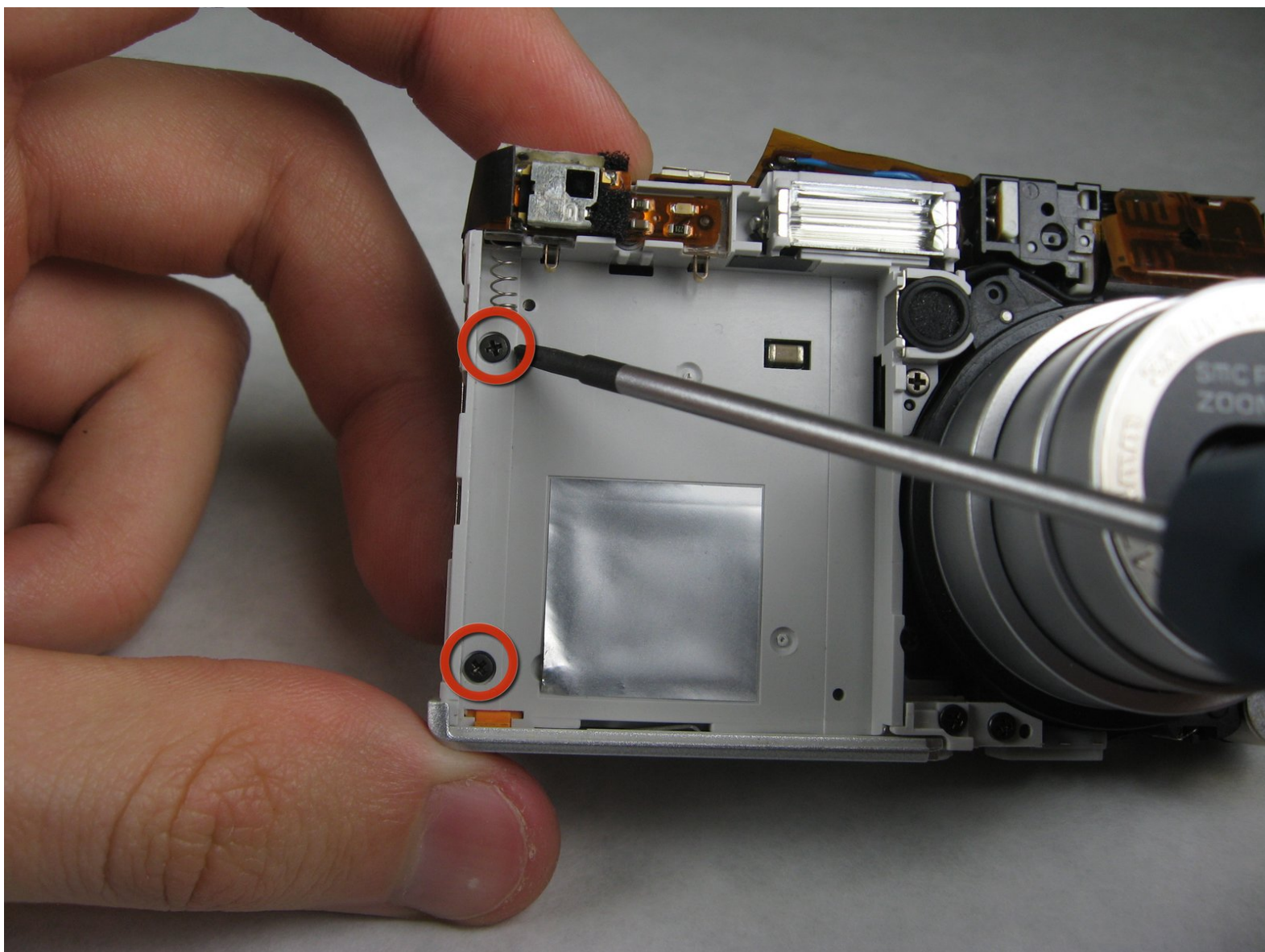




# Accessing Logicboard

Access the camera's logic board

Written By: Nicole Wong



---

## INTRODUCTION

In this guide you will learn how to remove the SD card circuit board to access the logic board. To access the logic board, you will need to unsolder two leads. For soldering instructions, please refer to steps 1 through 6 of [this soldering guide](#).



### TOOLS:

- [Phillips #0 Screwdriver](#) (1)
-

## Step 1 — Front and Back Cover



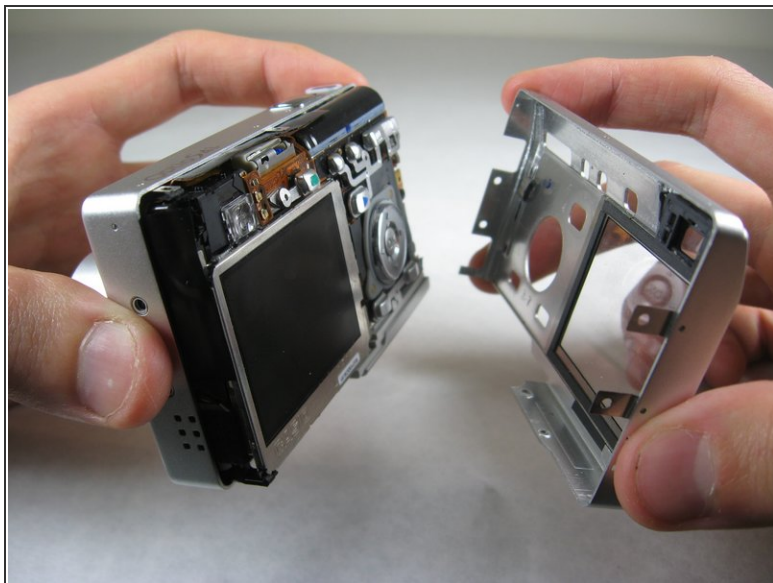
- Remove the following screws:
  - Two silver 3.15mm Phillips #00 screws on the right side of the camera
  - Two silver 2.08mm Phillips #00 screws on the left side of the camera

## Step 2



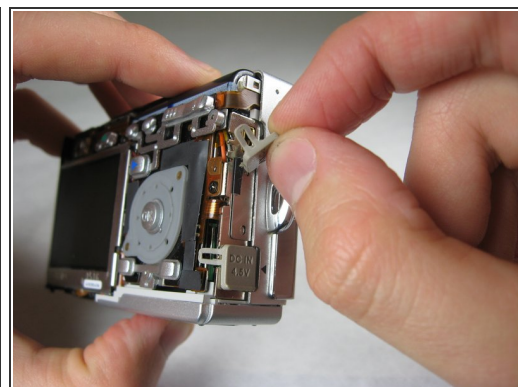
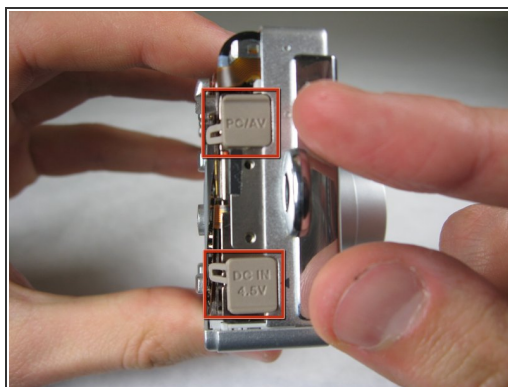
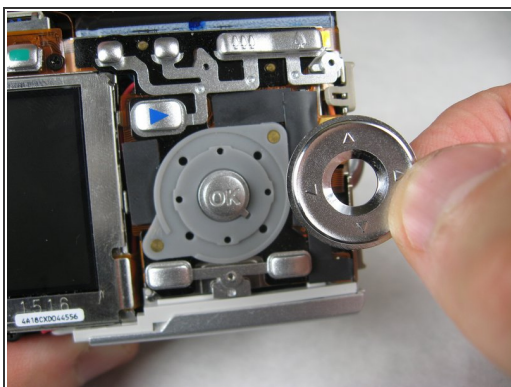
- Remove the two indicated screws on the bottom of the camera:
  - The screw circled in red is a longer silver 3.15mm Phillips #00 screw
  - The screw circled in blue is a shorter silver 2.25mm Phillips #00 screw


## Step 3



- Carefully pull the back of casing away from the front.

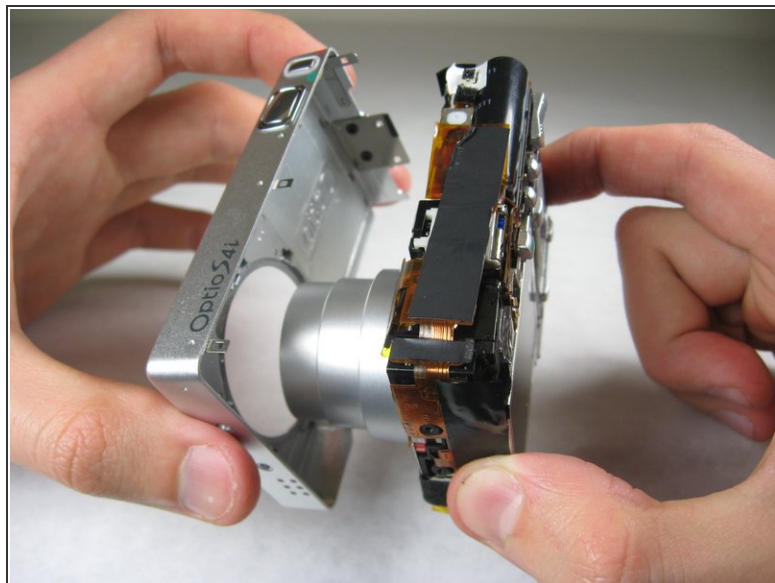
## Step 4



 After removing the back cover, several things must be removed.

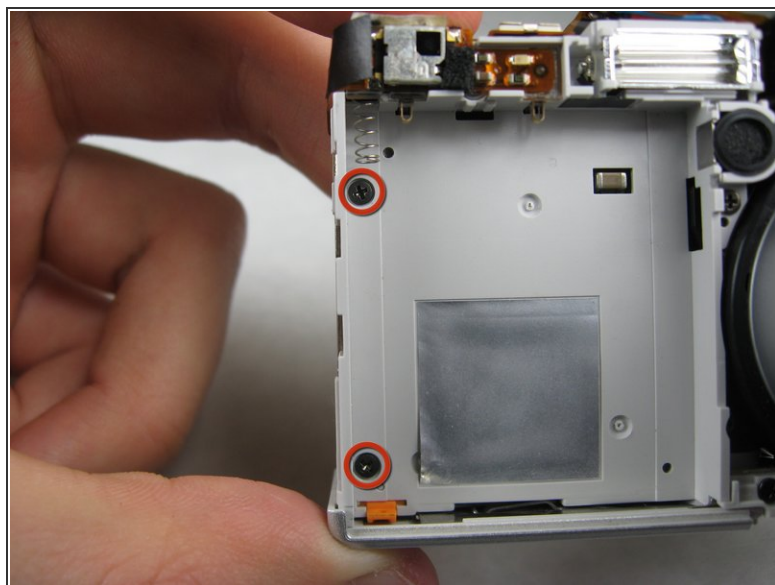
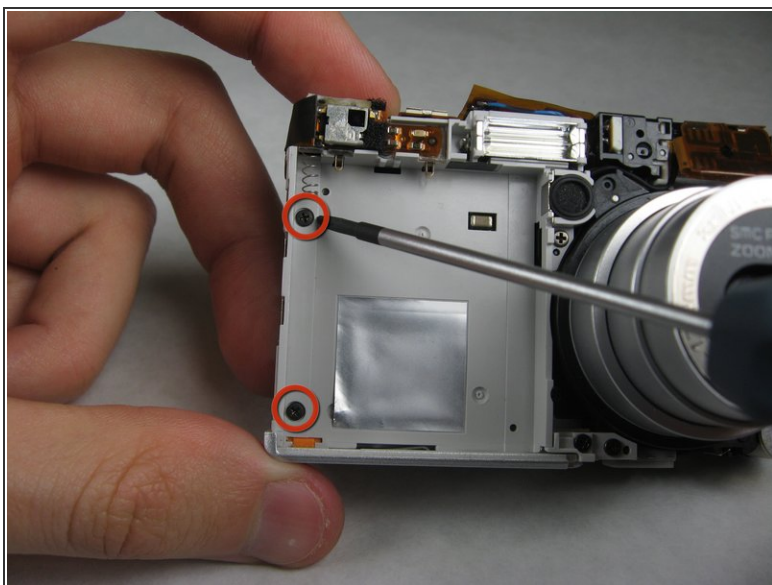
- Silver donut-shaped button will fall off. Place separately. Remove the plug covers on the right side of camera, labeled “PC/AV” and “DC IN 4.5V”.

## Step 5



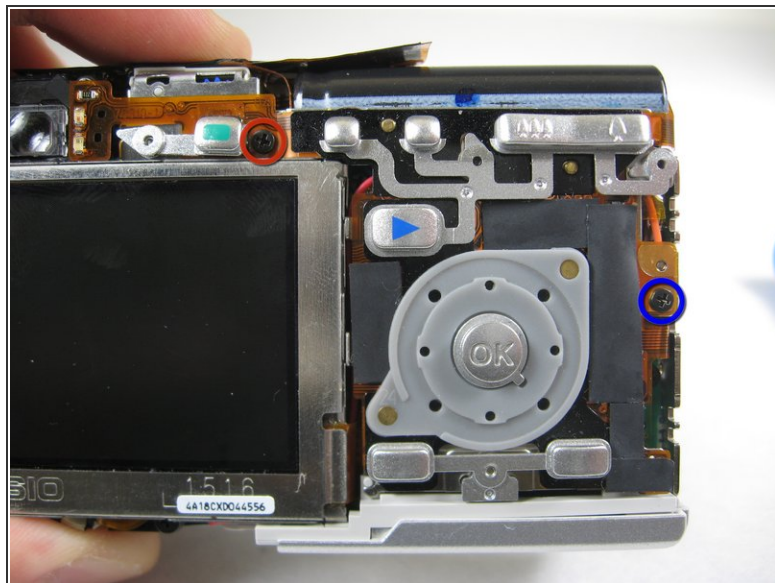
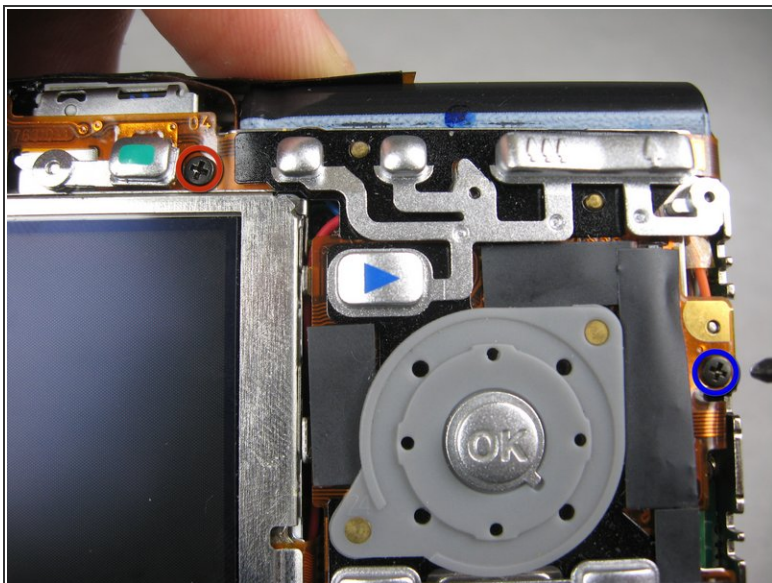
- To remove the front cover, gently hold the inside structure of the camera and slowly pull the front cover off.

## Step 6 — Logicboard



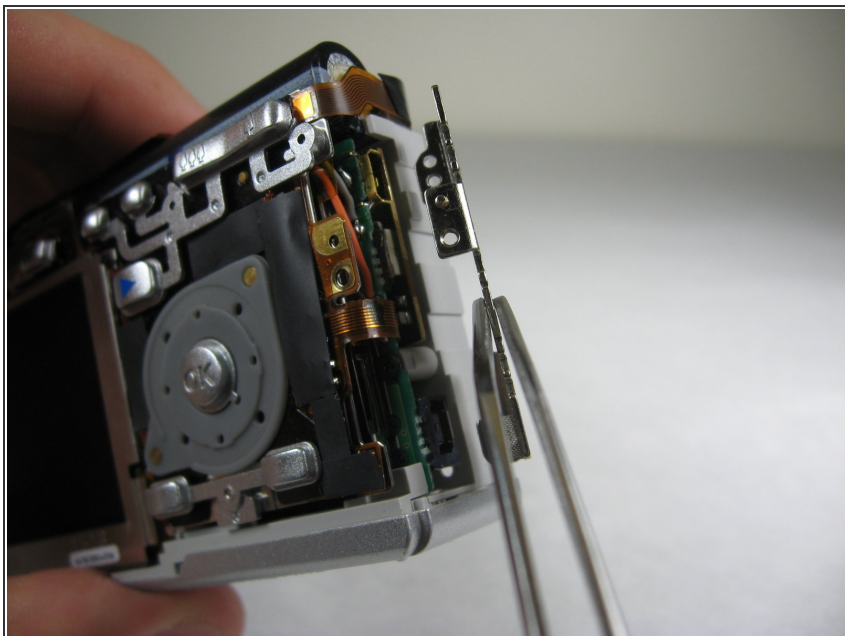
- On the front of the camera, in battery case, remove screws indicated:
  - Two black 2.05mm Phillips #00 screws

## Step 7



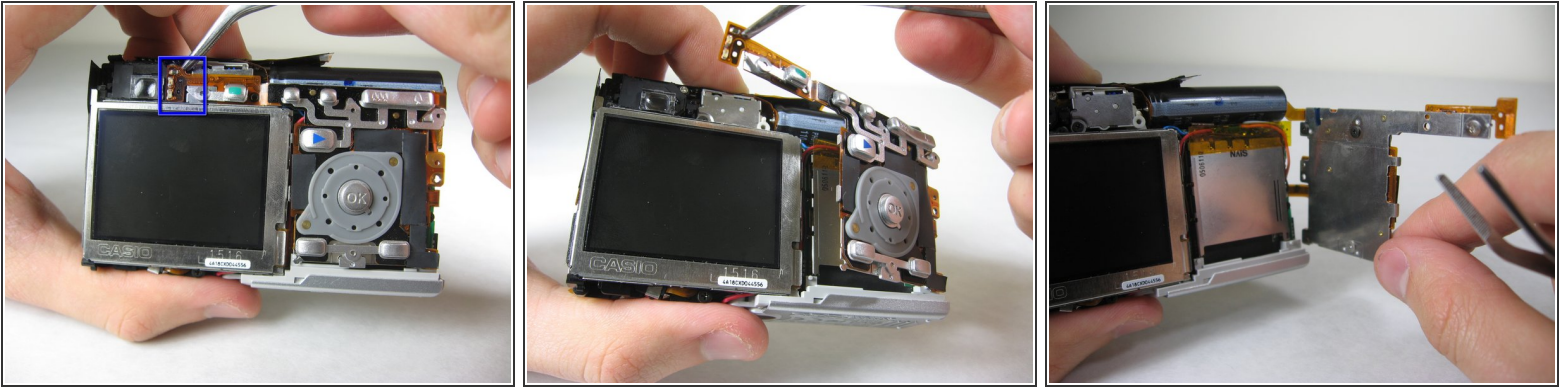
- Flip the camera over to the backside and remove screws indicated:
  - The screw circled in red is a longer black 3.00mm Phillips #00 screw
  - The screw circled in blue is a shorter black 2.00mm Phillips #00 screw

## Step 8



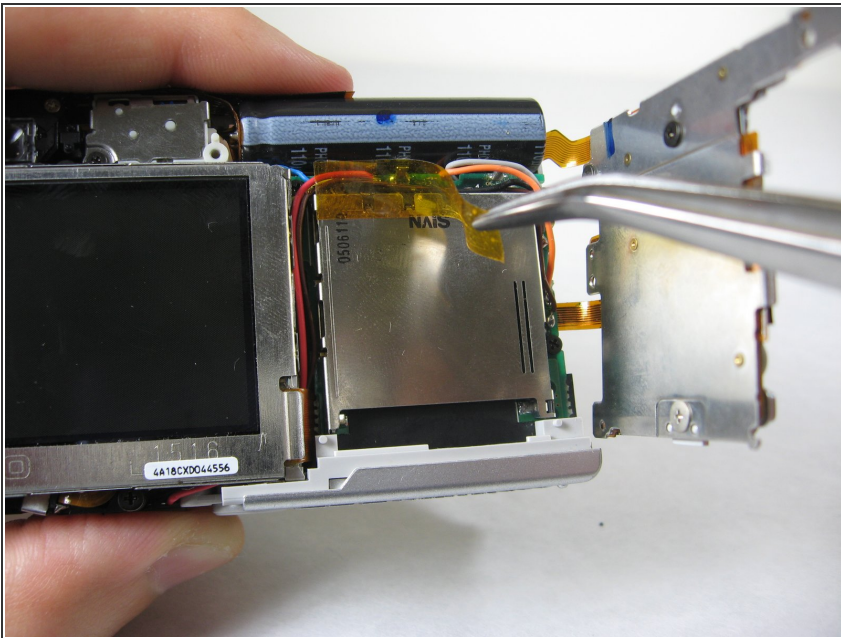
- Pull the cover plate off for the two power cord jacks.

## Step 9



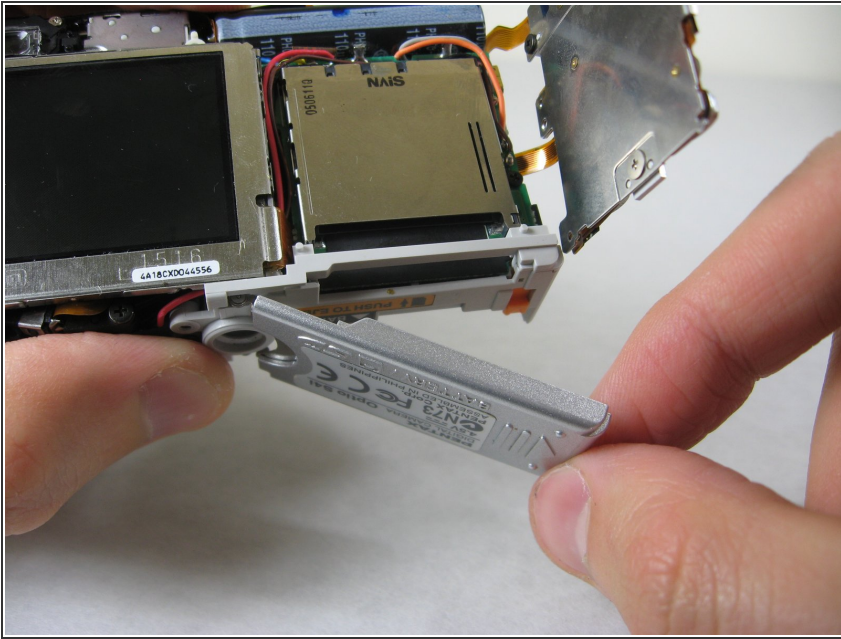
- Cautiously and gently pull up the control board at the upper left corner, next to the viewfinder.

## Step 10



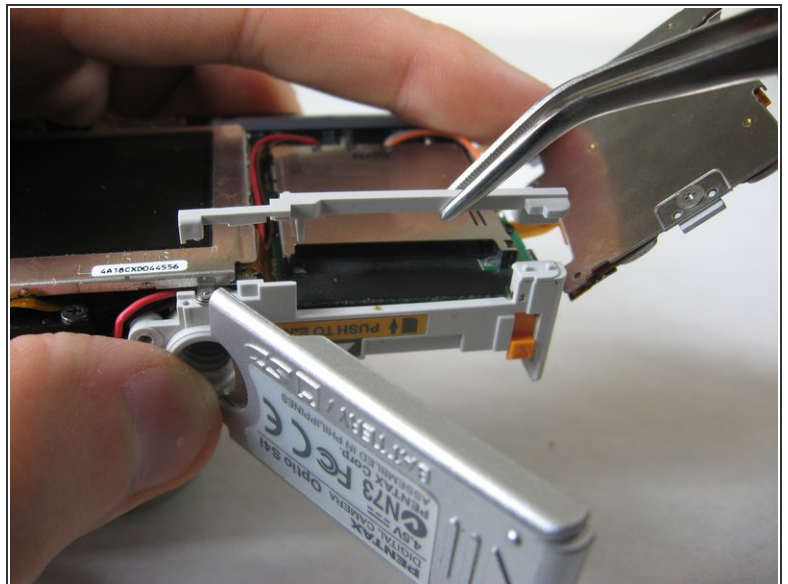
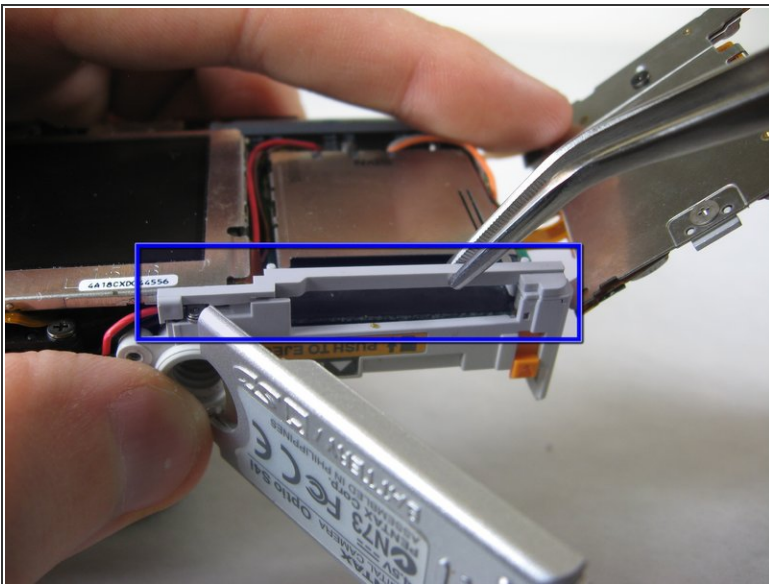
- Remove the orange tape on top of the SD cardholder.

## Step 11



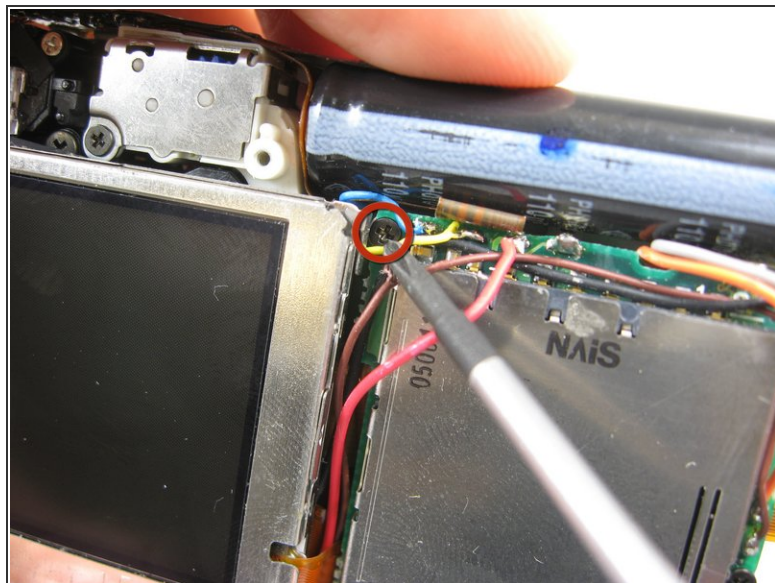
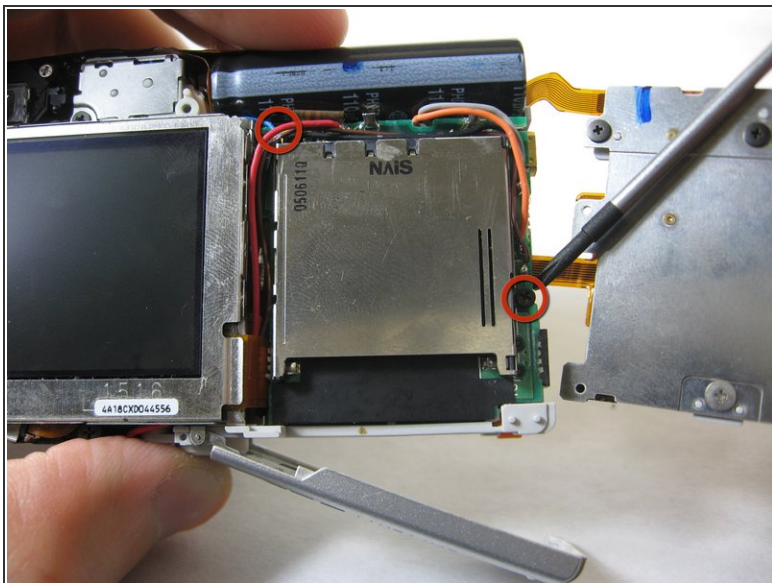
- Open the battery cover.

## Step 12



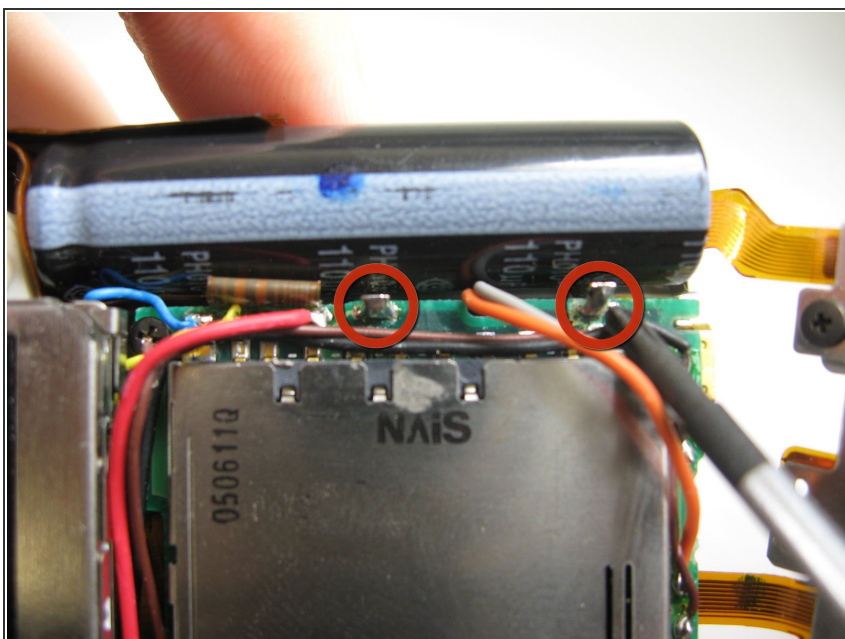
- Lift the indicated plastic piece off.

## Step 13



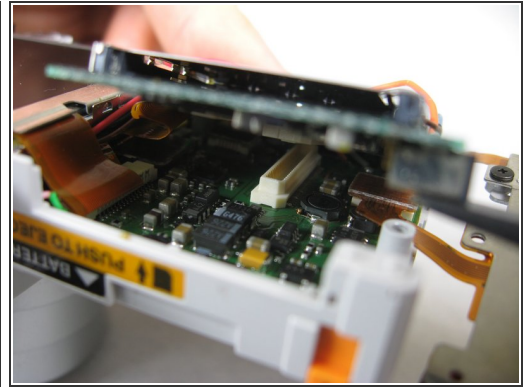
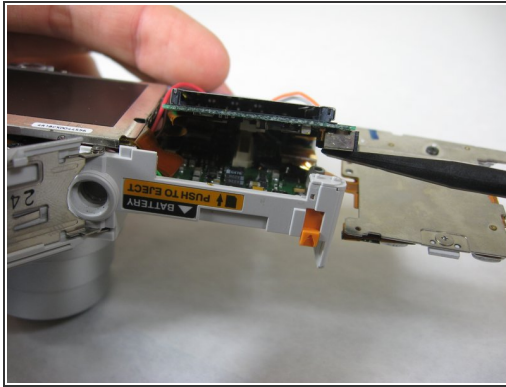
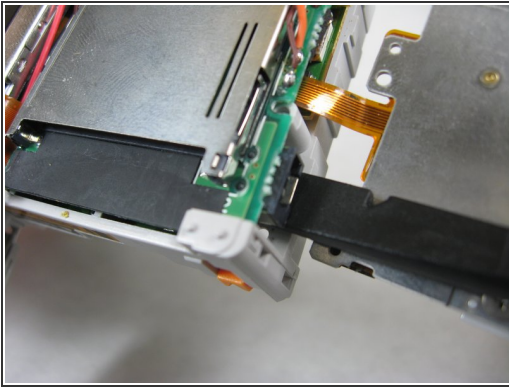
- Remove screws indicated:
  - Two black 4.80mm Phillips #00 screws

## Step 14



- Unsolder points indicated.
- ☒ Please refer to steps 1 through 6 of the iFixit soldering guide to unsolder these leads.

## Step 15



- Carefully lift up SD cardholder to reveal logicboard.

To reassemble your device, follow these instructions in reverse order.