



# Accessing Nokia 3100b DC Input

Written By: Sterling Fuentes



---

## INTRODUCTION

The DC input of the Nokia 3100b is where the cell phone's charger plugs in to. This guide shows you how to access the input.

---



### TOOLS:

- [T6 Torx Screwdriver](#) (1)
  - [Tweezers](#) (1)
-

## Step 1 — Battery



- Make sure your phone is turned off.

## Step 2



- Press the button on the back of the phone and slide the back panel off.
- Remove the battery by pulling it from the phone.

## Step 3 — SIM Card



- Gently pull back the small metal frame holding the SIM card into place, and lift open the frame.

## Step 4



- Retrieve your SIM card.



## Step 5 — Accessing Nokia 3100b DC Input



- Separate the front cover from the base.

## Step 6



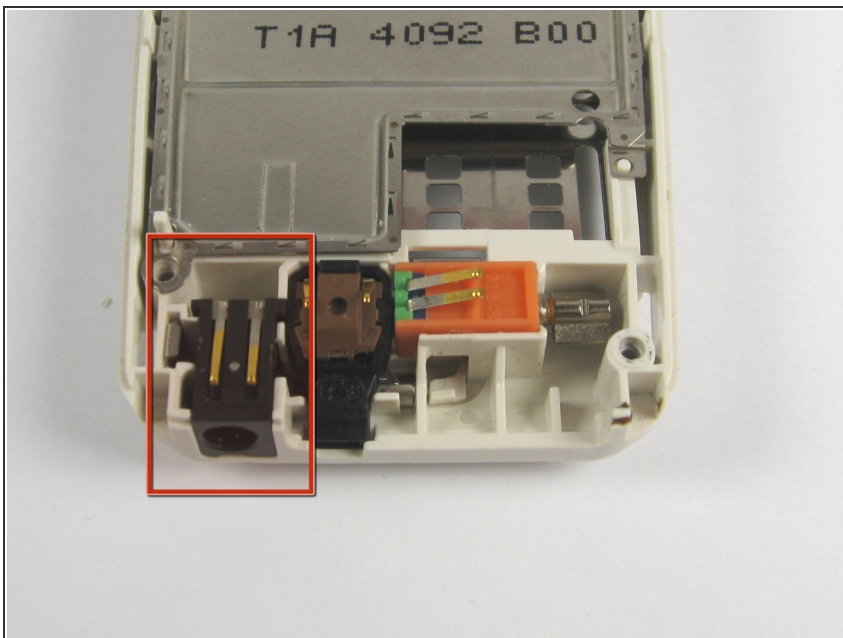
- Using a T6 Torx screwdriver, remove the screws in the order of the colors of the rainbow.

## Step 7



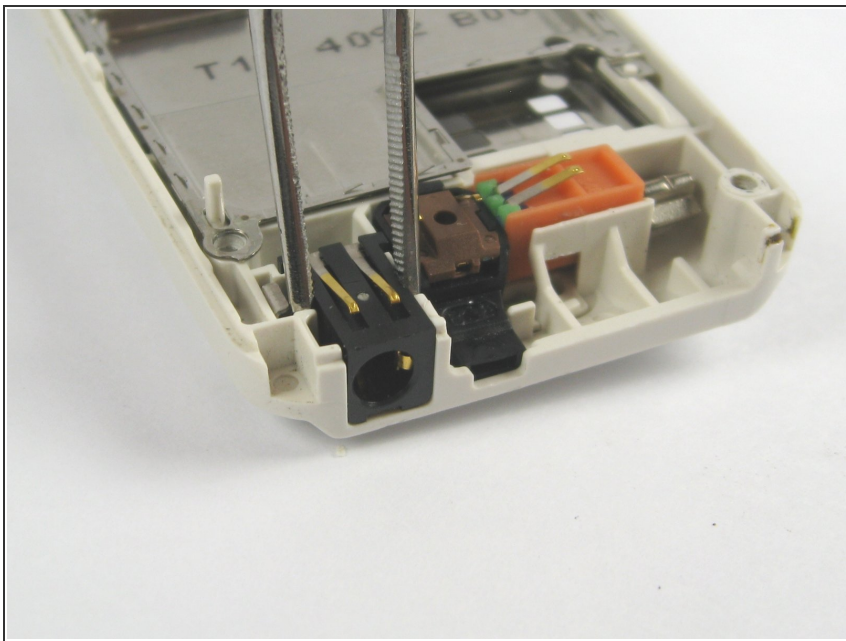
- Separate the screen assembly from the base.

## Step 8



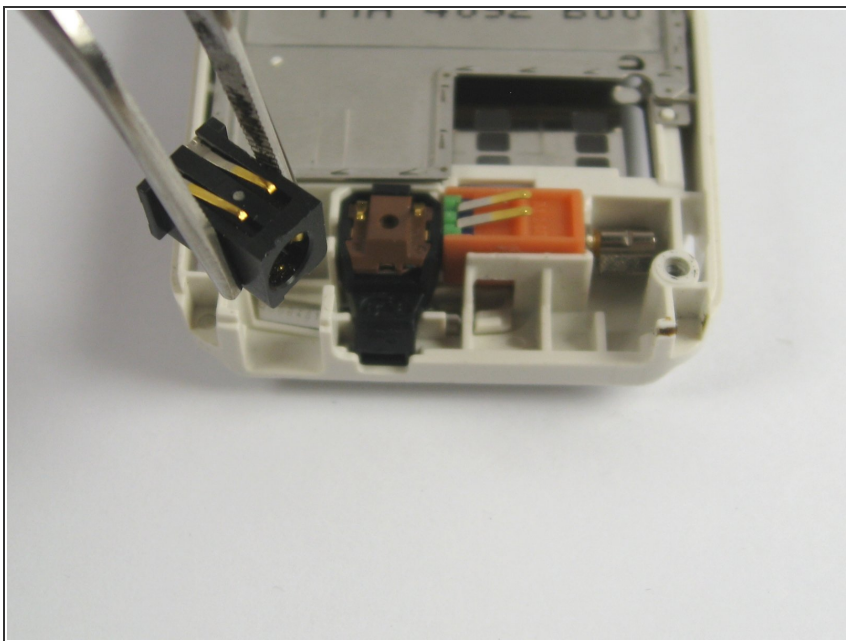
- Note where the DC input is.

## Step 9



- Use a pair of tweezers to remove the DC input from the base.

## Step 10



- The DC input is now removed. Replace as necessary.

To reassemble your device, follow these instructions in reverse order.