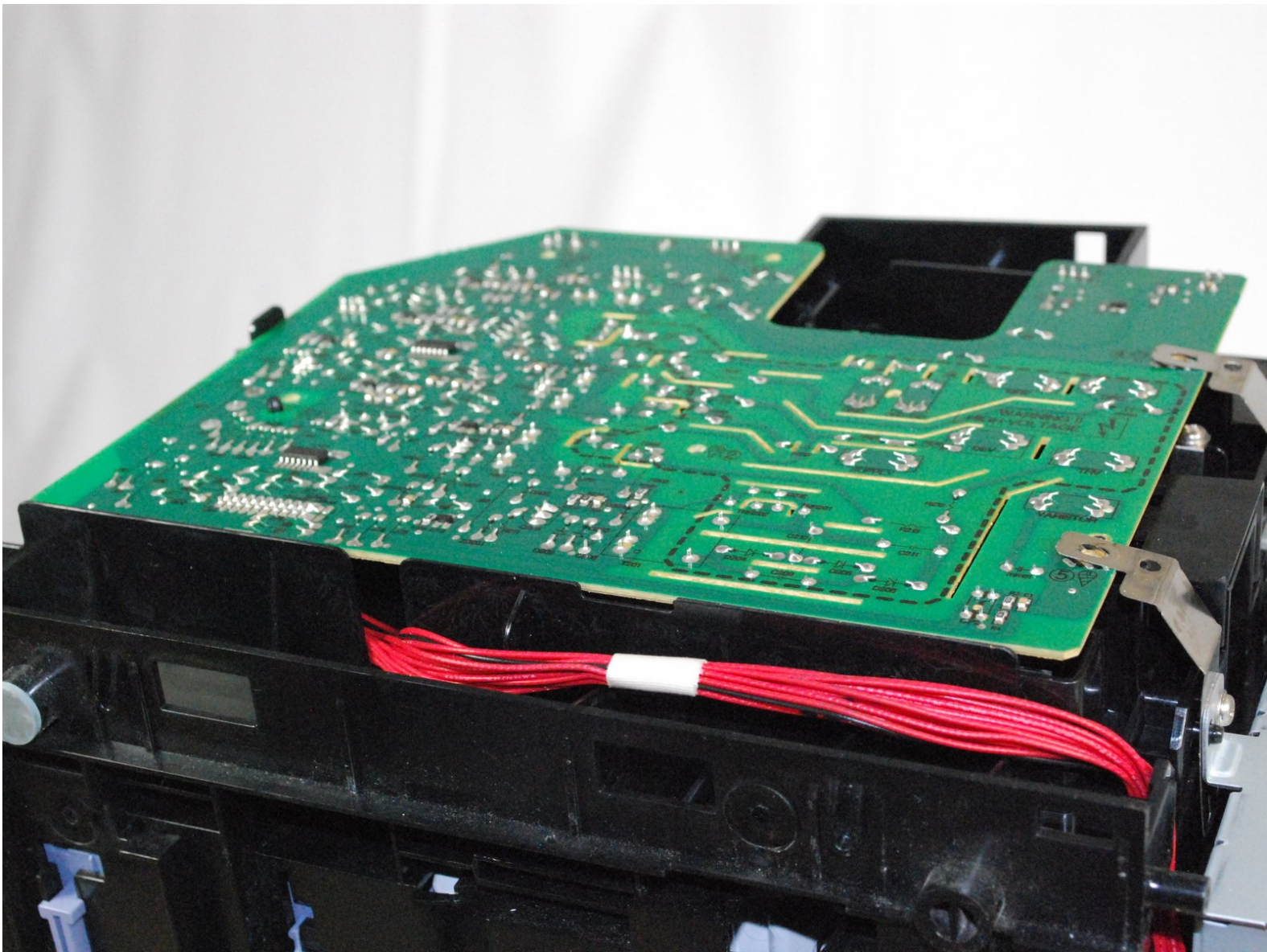




Accessing Samsung ML2510 Circuit Board

This guide will allow the user to access the side circuit board on the Samsung ML2510 laser printer.

Written By: bbaustin



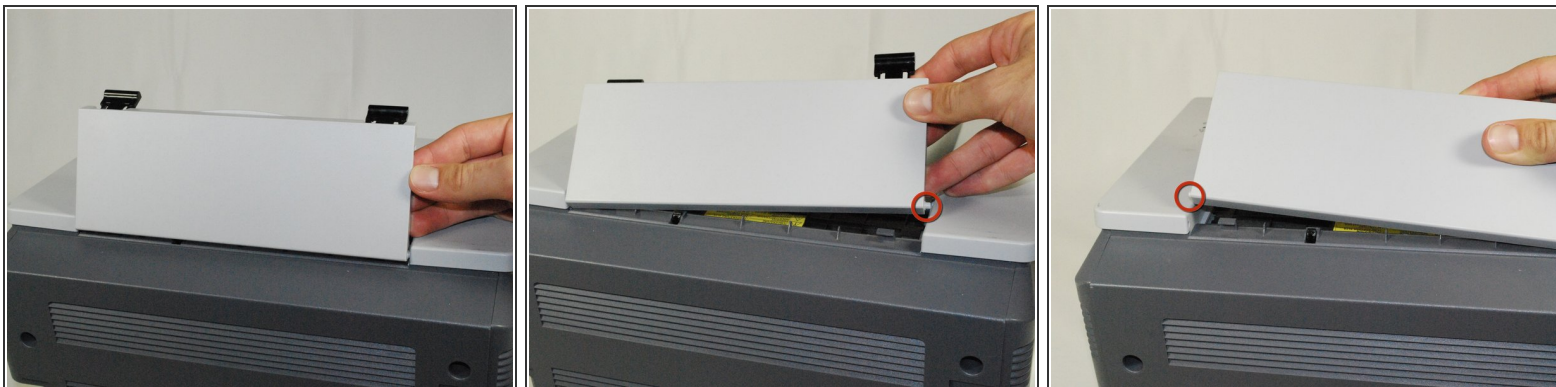
INTRODUCTION

This guide will require you to disassemble the rear and side panels of the printer in order to access the circuit board.

TOOLS:

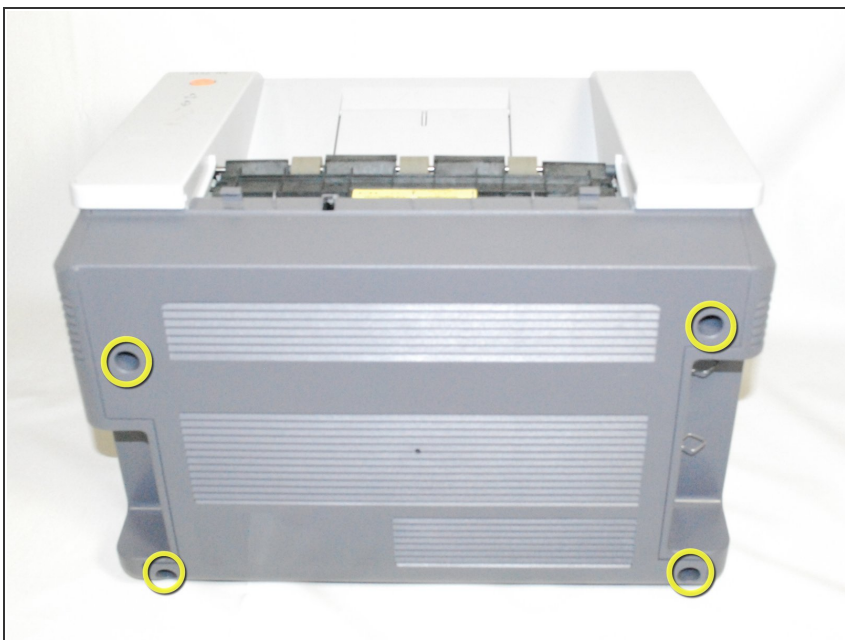
- [Phillips #2 Screwdriver](#) (1)
 - [iFixit Opening Tools](#) (1)
-

Step 1 — Removing Samsung ML2510 Back Panel



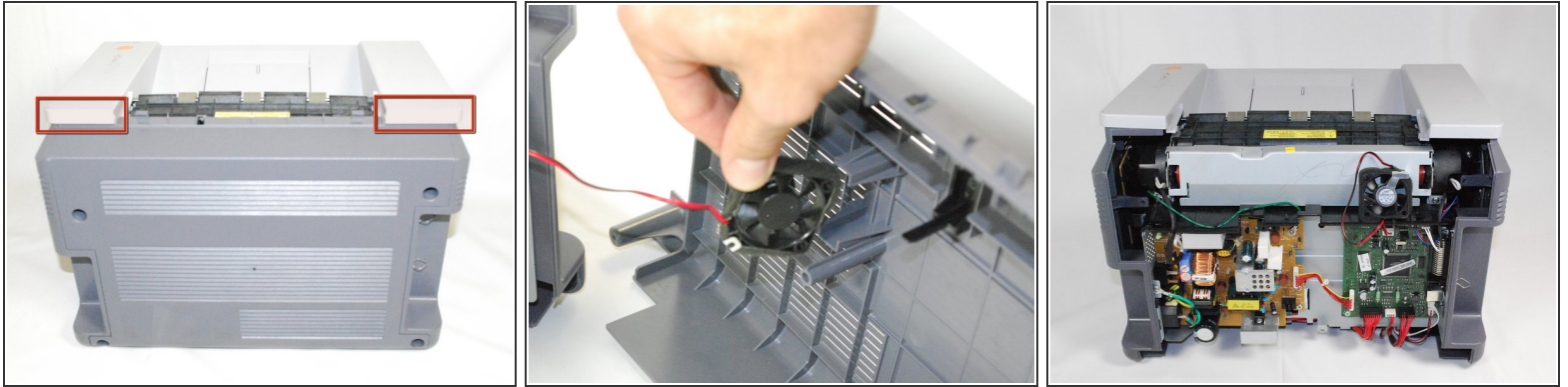
- Remove the hinged top panel by taking the small pins at the bottom of the panel out of their holes.

Step 2



- Using a Phillips #2 screwdriver, remove the four 1" long, Phillips, PH#2 screws on the back of the printer.

Step 3



- Gently lift the top panel while simultaneously pulling off the back panel.

⚠ Before pulling out the back panel entirely, make sure to remove the rear cooling fan from its slot.

Step 4 — Accessing Samsung ML2510 Circuit Board



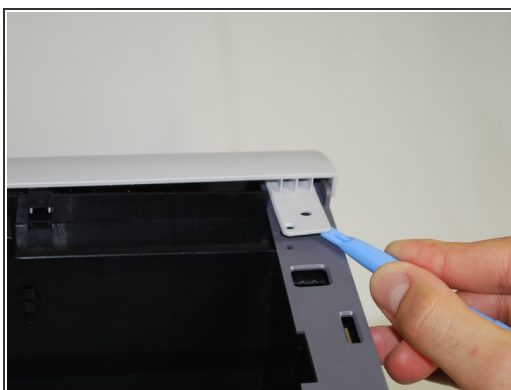
- Remove the front panel by gently moving the holes on the panel from the pegs attached to the main printer body one at a time. Be sure to remove the entire front panel and not just the flap on the paper tray.

Step 5



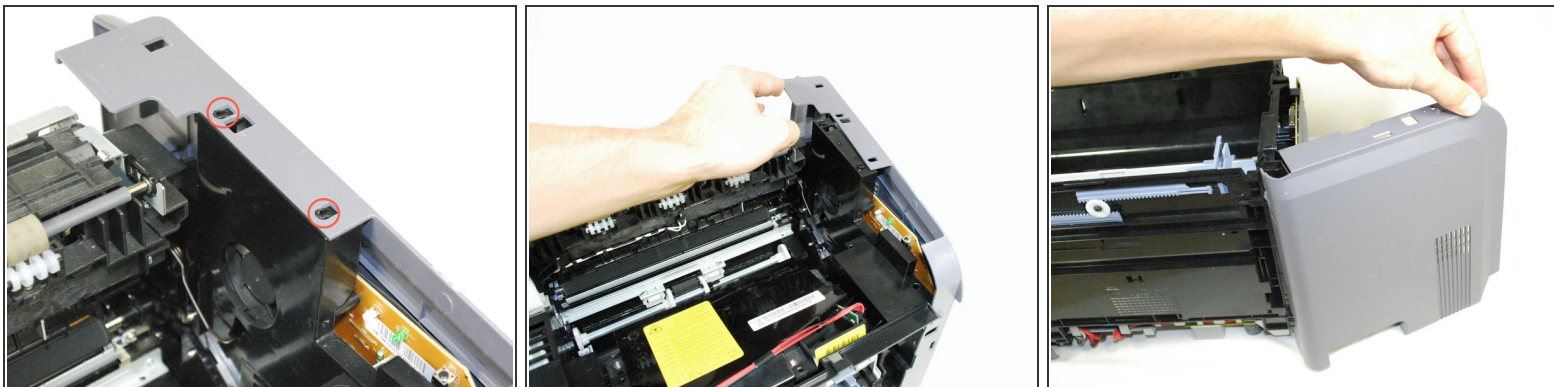
- Using a Phillips #2 screwdriver, remove the two, 1", Phillips, PH#2 screws on the front face of the printer.

Step 6



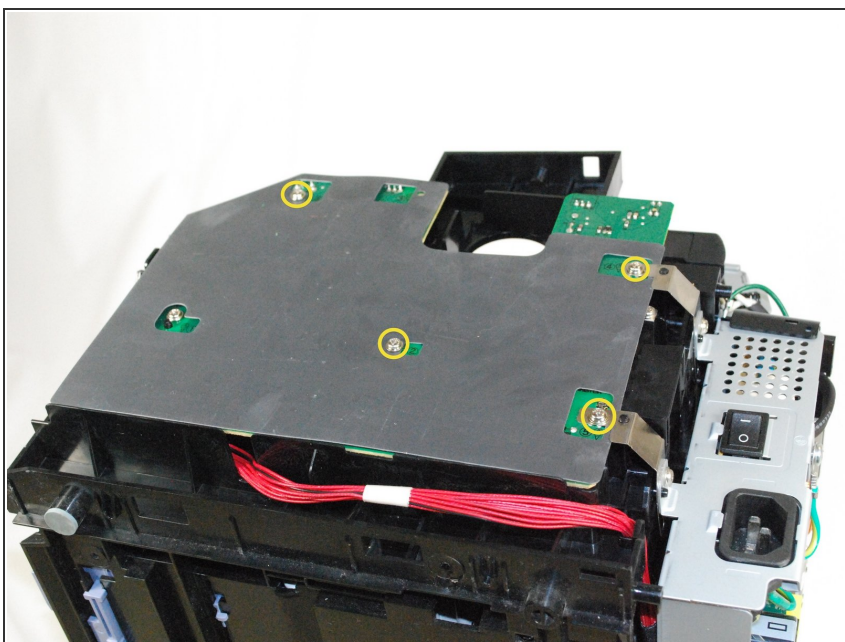
- Using a plastic opening tool, gently lift one side of the top panel from its peg.
- Repeat the process for the other side.
- Lift the top panel from the front to remove it entirely.

Step 7



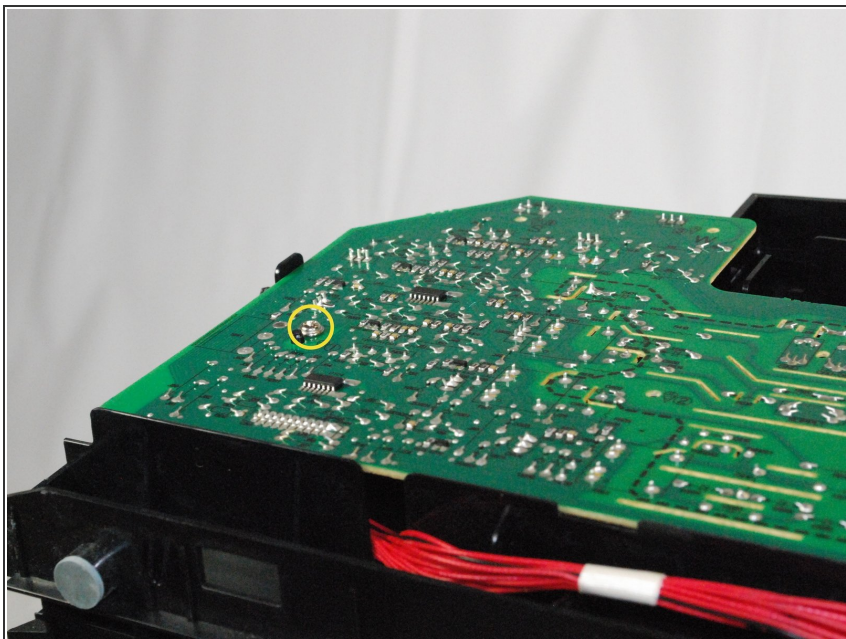
- Lift the right side panel up from the raised stops.
- Gently rotate the panel as indicated in the picture to remove the panel entirely.

Step 8



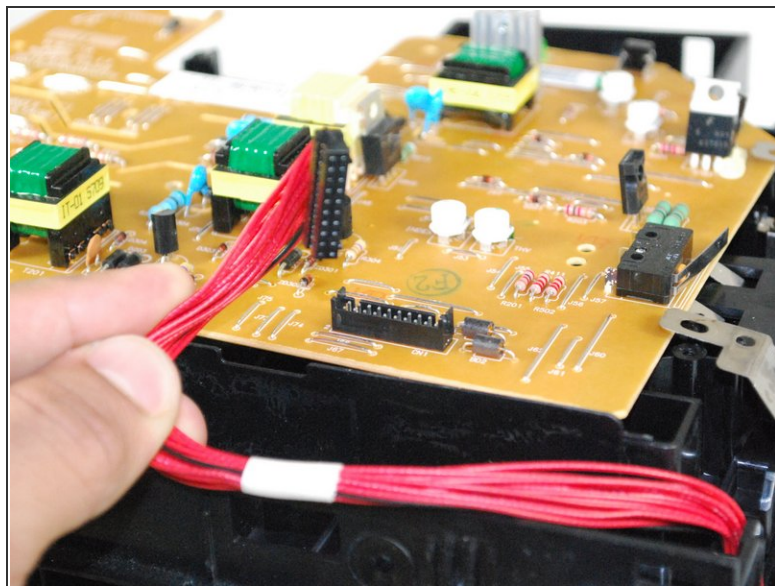
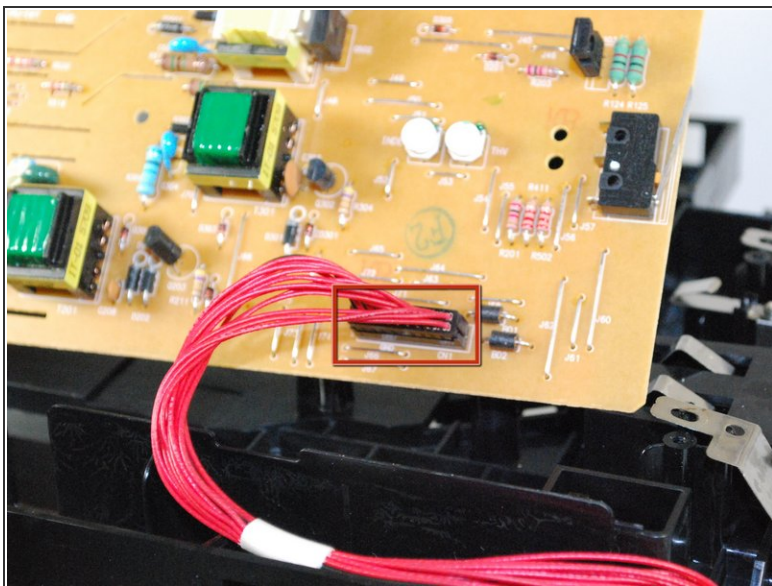
- Using a Phillips #2 screwdriver, remove the four, 1", Phillips, PH#2 screws attaching the gray plate to the printer.
- Remove the plastic cover gently by sliding it under the silver hinges on the right.

Step 9



- Using a Phillips screwdriver, remove the, 1", Phillips, PH#2 screw attaching the circuit board to the printer.

Step 10



- Turn over the circuit board to access main wiring.
- Gently unplug the wiring from the circuit board.

To reassemble your device, follow these instructions in reverse order.