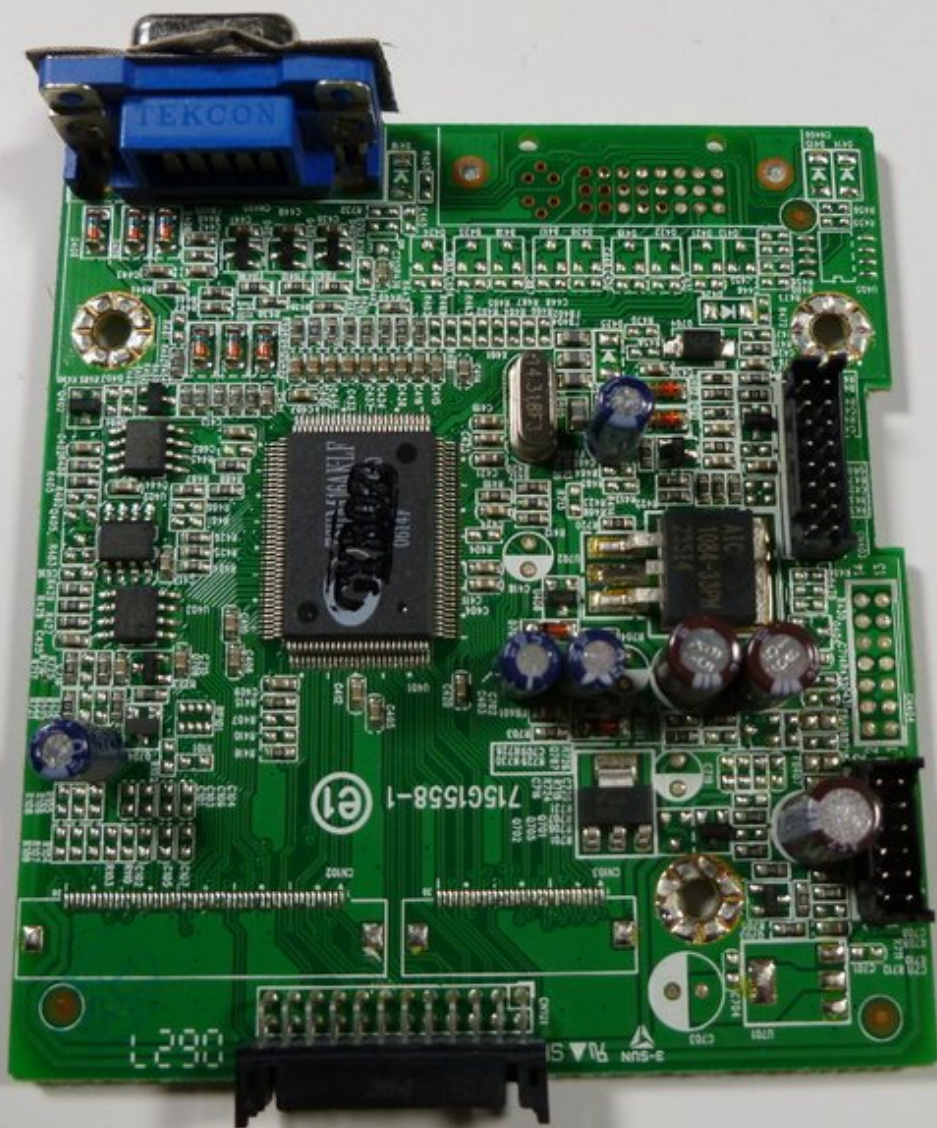




Acer AL1916 Motherboard Replacement

This guide will show the steps required to remove the back cover of the monitor, detach the malfunctioning motherboard, and install a new motherboard.

Written By: Taylor Atterbury



INTRODUCTION

The motherboard processes the incoming signals from the computer and directs the monitor to display the desired image.



TOOLS:

- [Large Needle Nose Pliers](#) (1)
- [Phillips #2 Screwdriver](#) (1)
- [iFixit Opening Tools](#) (1)



PARTS:

- [Circuit Board](#) (1)

Step 1 — Stand



- i** Lay the monitor on a flat surface so that the back is facing up.

Step 2



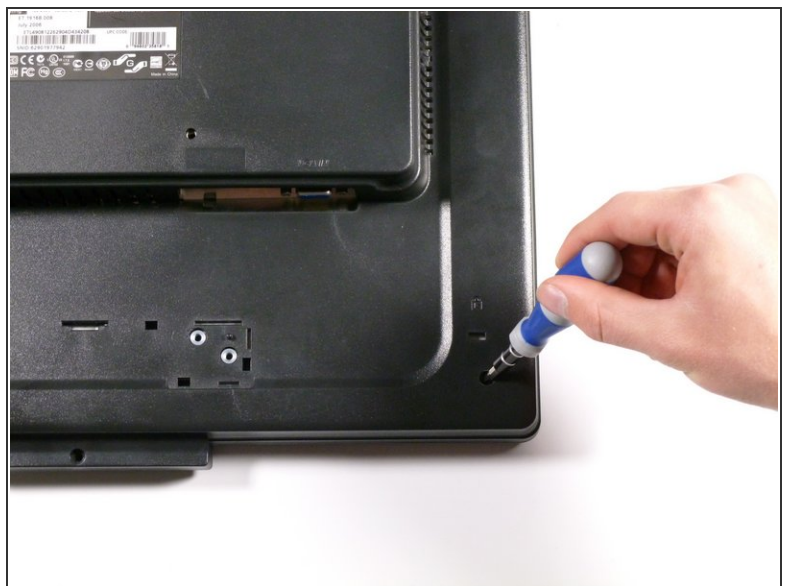
- Grab the hinge cover with both hands on either side of the stand.
- Squeeze inwards with your thumbs and fingers and lift up to remove the hinge cover.

Step 3



- Remove the four 12.1 mm Phillips #2 screws that hold the stand to the monitor.
- ⚠ Support the monitor while removing the screws to prevent the monitor from falling.
- Lift up to detach the stand.


Step 4 — Outer Case



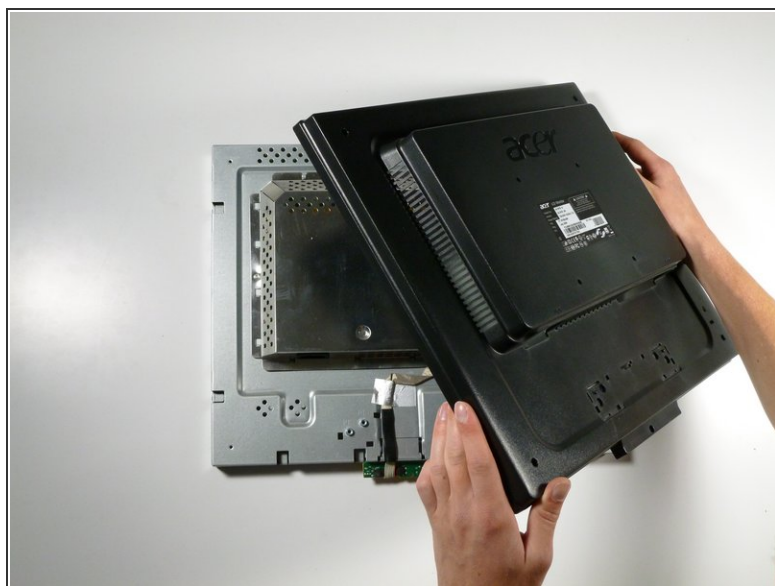
- Remove the five 9.5 mm Phillips #2 screws located around the perimeter of the monitor.

Step 5



- Starting at the corner of the monitor, wedge the small plastic opening tool between the back cover and the display bezel.
 - Tilt the plastic opening tool up to separate the back cover from the display bezel.
 - Continue around the perimeter of the monitor until the display bezel comes off.
-  A reasonable amount of force is necessary to detach the back cover from the display bezel.

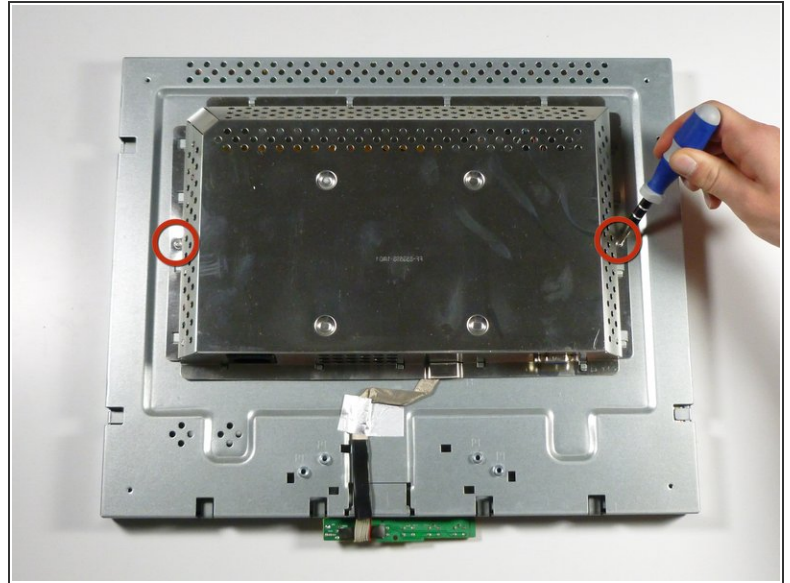
Step 6



i Reposition the monitor so that the back is facing up.

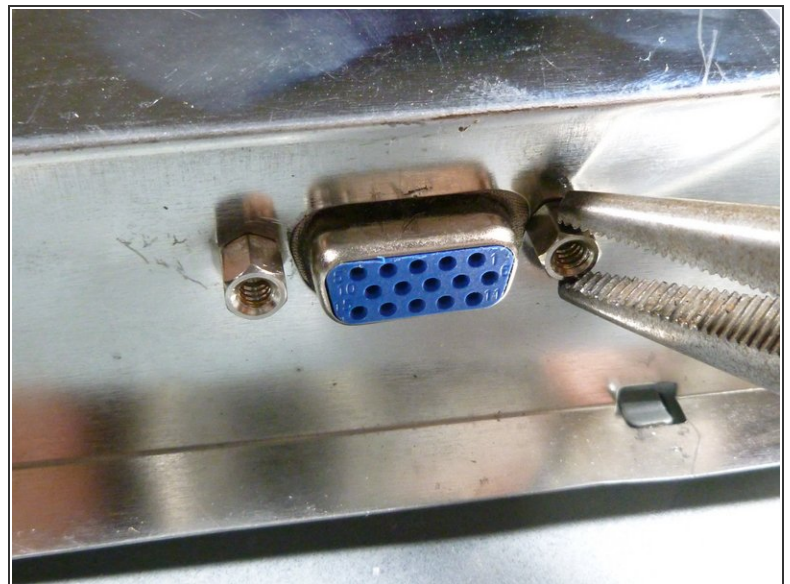
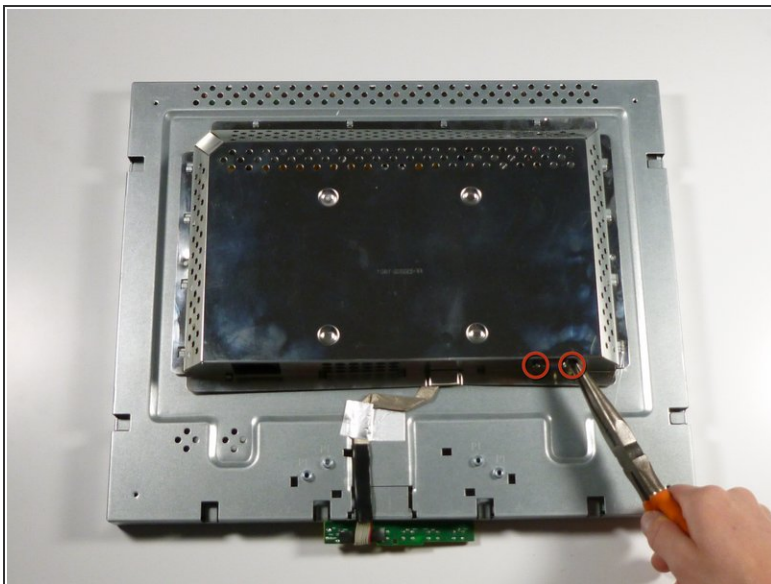
- Grab the corners of the monitor and jiggle them upwards to detach the back cover from the inside of the monitor.
- Lift the back cover up.

Step 7 — EMI Shield



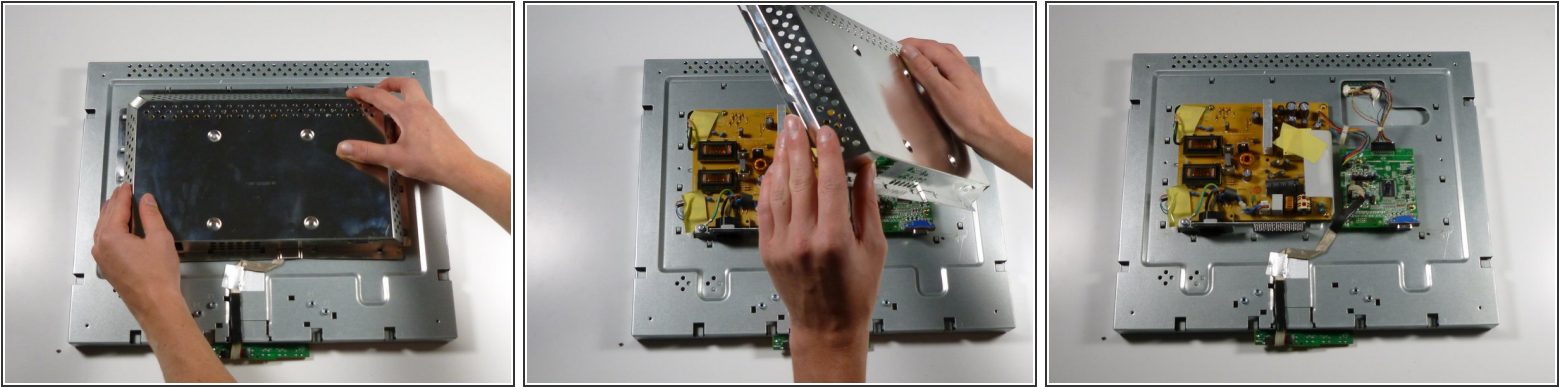
- Remove the two 5.7 mm Phillips #2 screws located on either side of the EMI shield.

Step 8



- Using a nut driver (or if necessary, needle-nose pliers), remove the two nuts on either side of the VGA input.

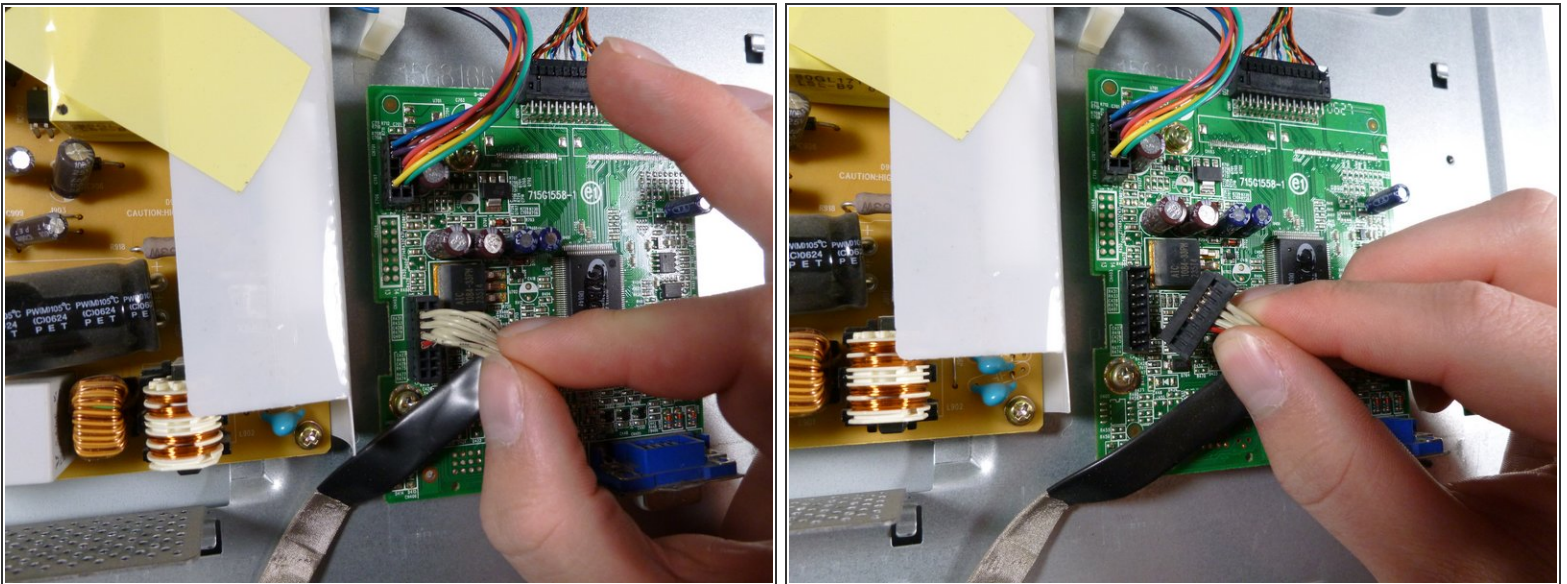
Step 9



- Grab the metal casing by the sides and slide it down towards the bottom of the monitor.
- Lift up to remove the metal casing.

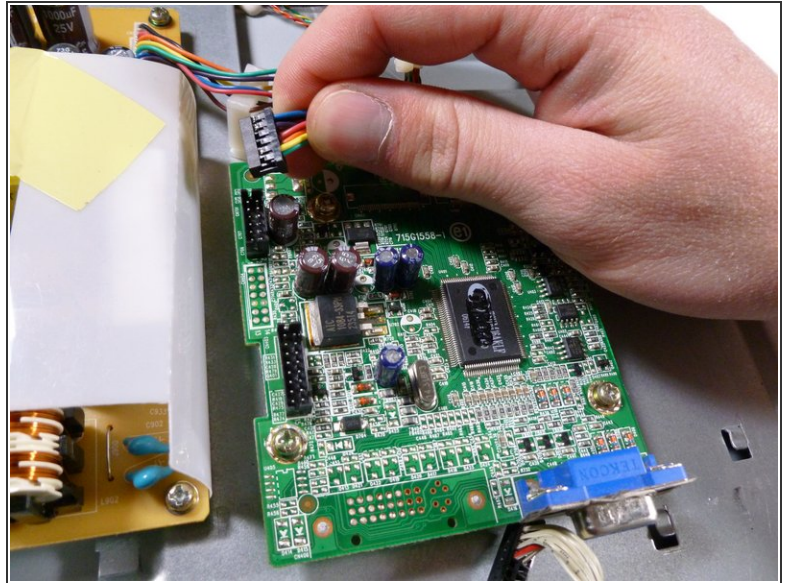
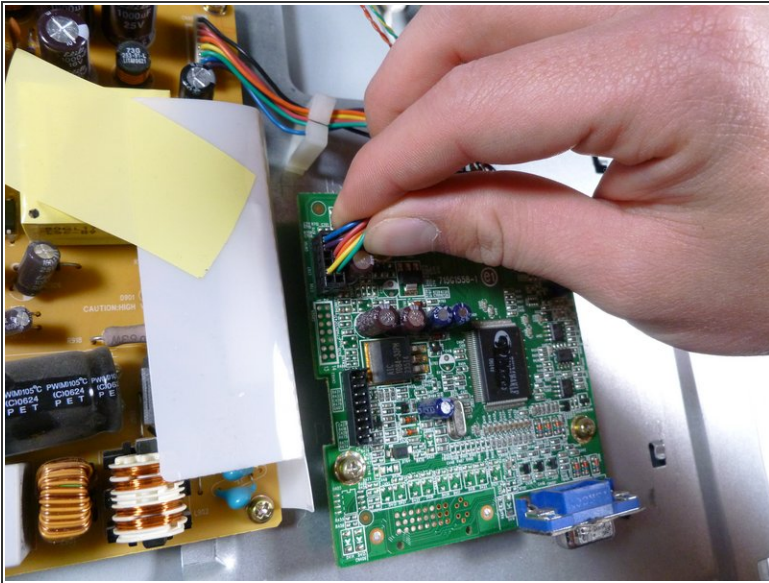
⚠ Beware, metal casing is sharp!

Step 10 — Motherboard



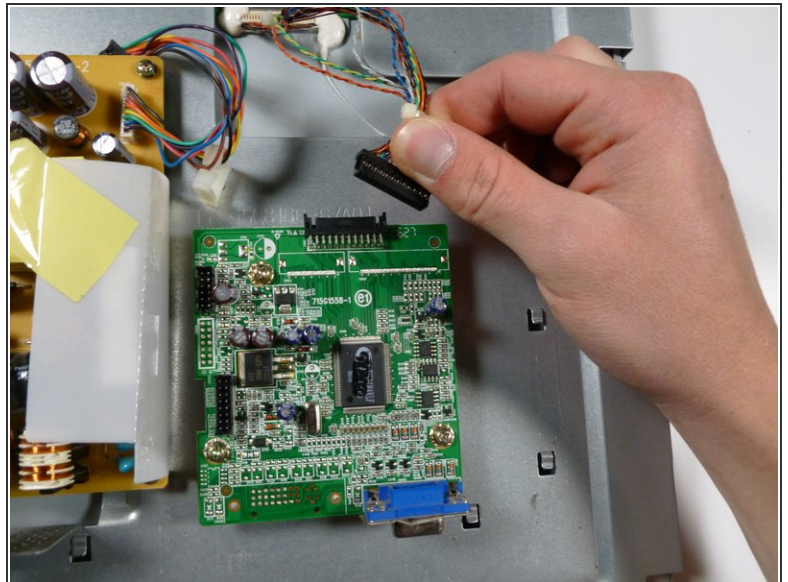
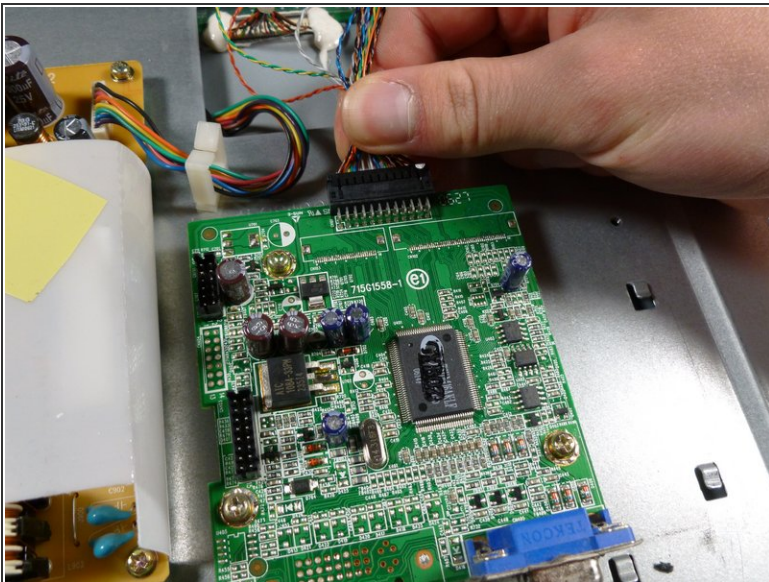
- Remove the beige control cable to the left of the VGA input by pulling it up.

Step 11



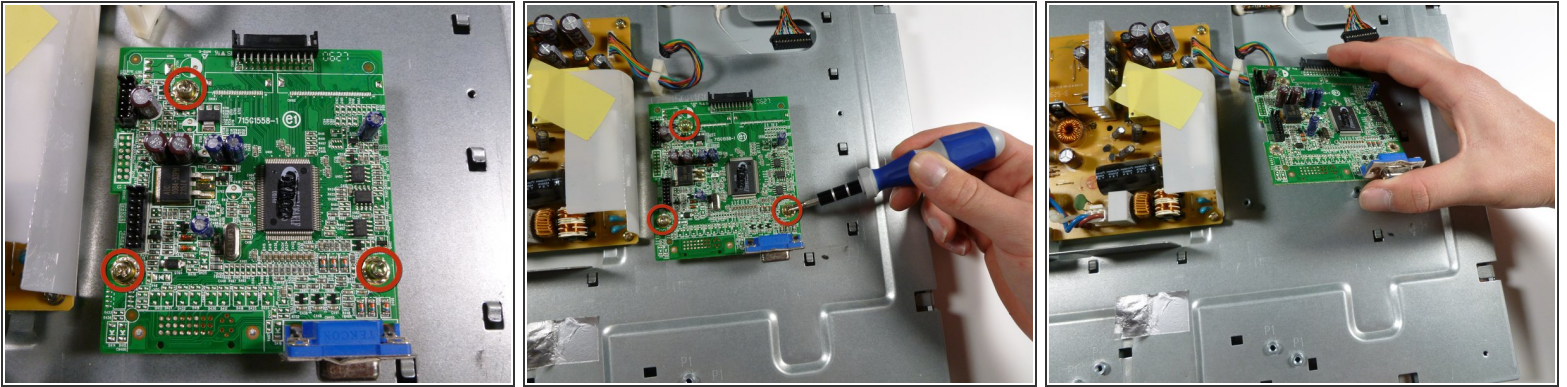
- Remove the rainbow-colored power cable by pulling it straight up.

Step 12



- Remove the display cable located at the top of the motherboard by pulling it out towards the top of the monitor.

Step 13



- Remove the three 7.7 mm Phillips #2 screws from the motherboard, and take out the motherboard by lifting it up.

To reassemble your device, follow these instructions in reverse order.