



Acer Aspire 3003WLCi Optical Drive Replacement

This guide will depict how to remove and replace the optical drive from your Acer Aspire WLCi.

Written By: Tristin Viale



INTRODUCTION

In this guide, you will be instructed on how to replace the optical drive in your laptop. Your optical drive allows for your computer to read CD ROMs.

This replacement is a bit difficult, and will take you 9 steps to complete. However, you must remove the hard drive, internal fan, and battery first.



TOOLS:

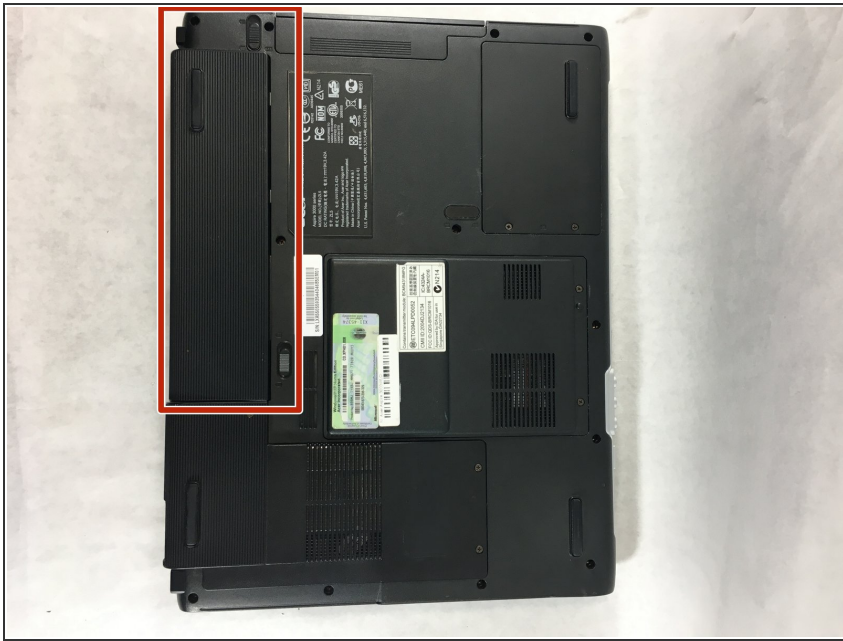
- [Spudger](#) (1)
- [Phillips #0 Screwdriver](#) (1)
- [Metal Spudger](#) (1)
- [Phillips #00 Screwdriver](#) (1)



PARTS:

- [Optical Disk Drive](#) (1)

Step 1 — Battery



- Turn the Acer Aspire 3003WLCi so that the bottom of the laptop is facing up. Orient it so that the battery is on your left.

Step 2



- There will be two switches on the back of the laptop: one at the top of the battery, and one at the bottom.
- Shift the bottom switch into an upward position in order to unlock the battery.
- To unlock the upper switch, forcefully push the switch up and hold it in this position.

Step 3



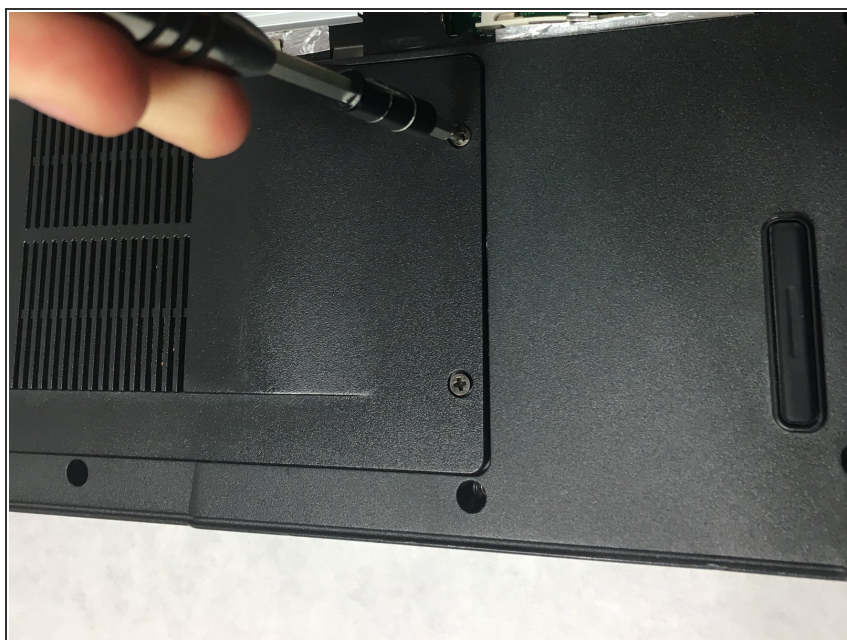
- While holding the upper switch in the upward position, remove the battery by pulling it out to the left.
- ⓘ You may need to be a bit forceful when pulling the battery to the left if it hasn't been removed before.
- ⚠ You have to maintain pulling the upper switch upwards, or the battery will not come out.

Step 4 — Internal Fan



- The panel you will be removing to access the internal fan is located at the bottom of the laptop.

Step 5



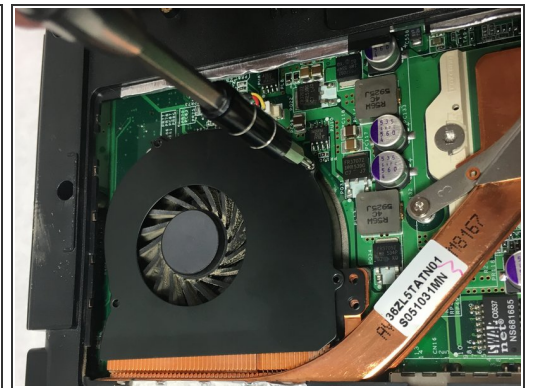
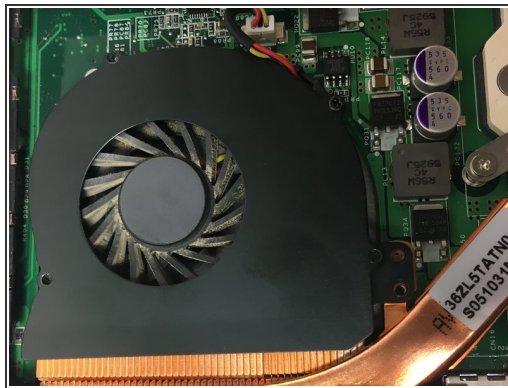
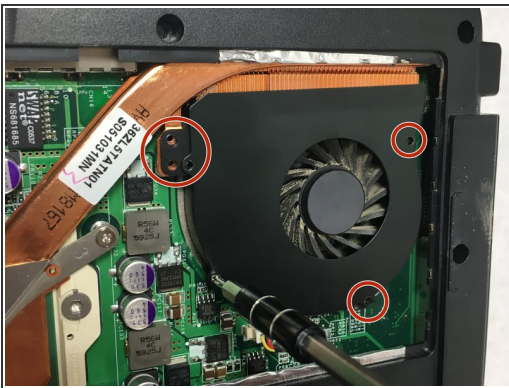
- Using a Phillips #0 screwdriver, unscrew the two 5mm captive screws on the panel.
- ⓘ The screws will not come out of the panel. This is intentional by the manufacturer.

Step 6



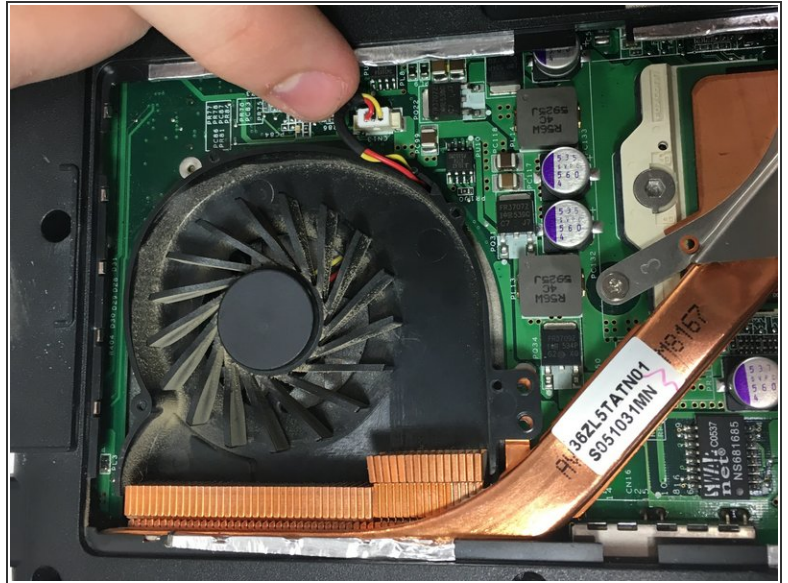
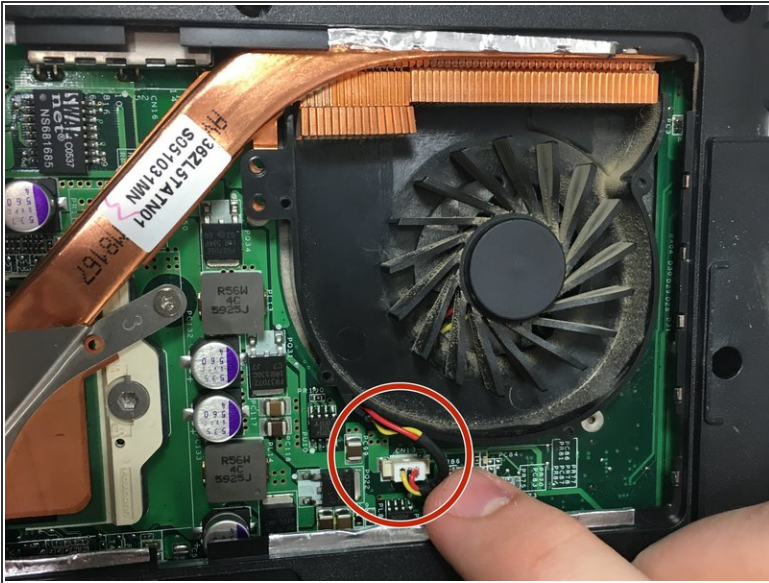
- Lift and remove the panel.
- ❗ If you have difficulty removing the panel, use a spudger to pry the panel open.

Step 7



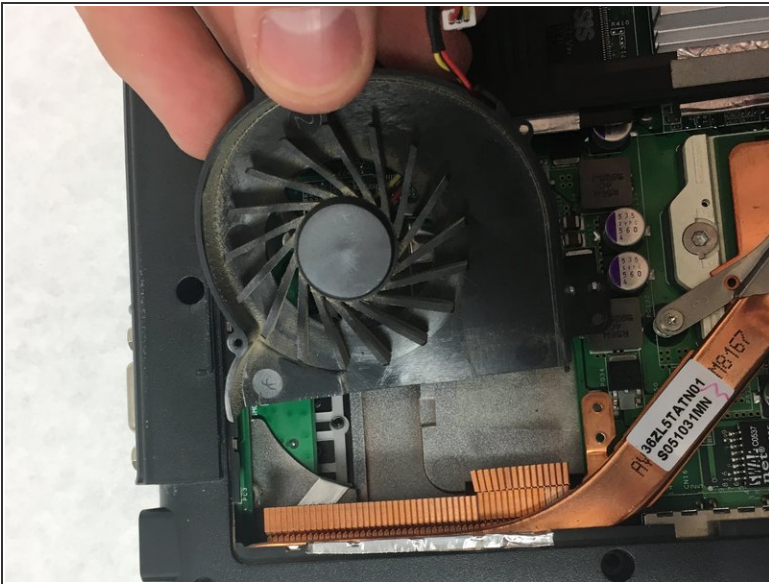
- The fan is in the upper right corner of the panel.
- Using a Phillips #00 screwdriver, remove each of the four 2.5mm screws securing the fan to the laptop.

Step 8



- Disconnect the fan power cable from the motherboard by pulling the cable up and out of the connector.

Step 9



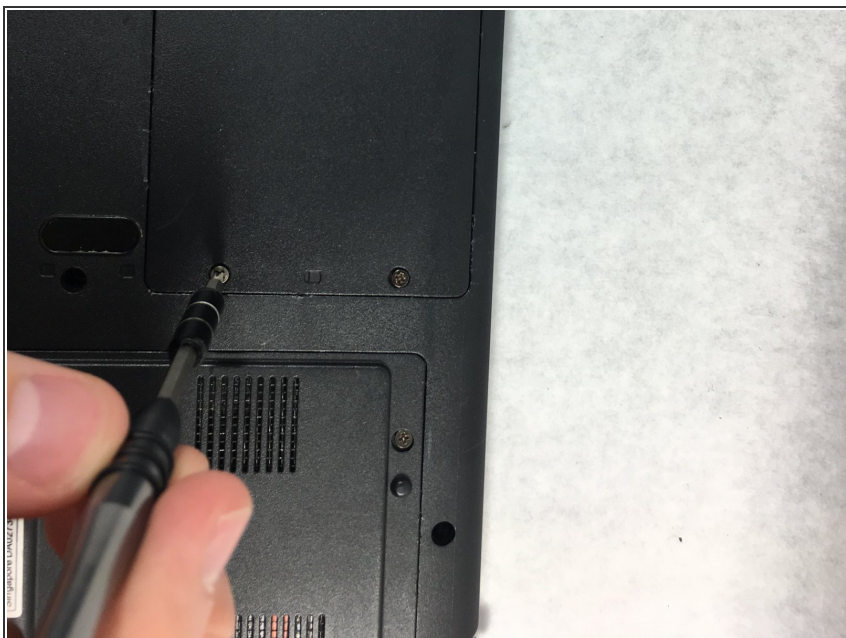
- Remove the fan by pulling it away from its surrounding copper.
- ⓘ The fan is secured on the other side of the copper by a piece of tape, so it may help to wiggle the fan multiple times to try and loosen the tape.

Step 10 — Hard Drive



- Locate the hard drive access panel in the upper right corner of the laptop.

Step 11



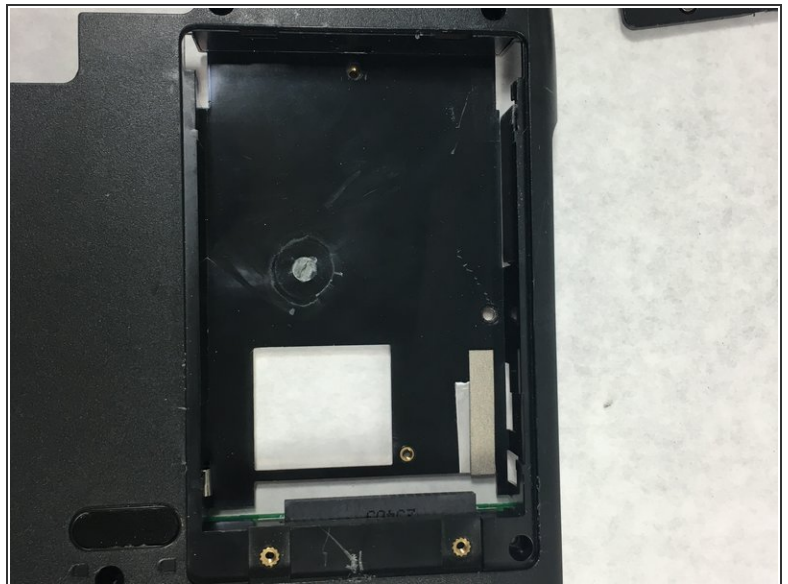
- Using a Phillips #0 screwdriver, unscrew the two 5mm captive screws attached to the access panel.
- ⓘ The screws will not come out all the way. Once they are loose enough you should be able to open the panel.

Step 12



- Lift and remove the panel to access the hard drive.
- ⓘ This panel can be difficult to remove. If you have trouble, use a spudger to pry the cover up.

Step 13



- The hard drive is connected to the computer; simply pull it back from the connector and take it out of the laptop casing.

Step 14 — Optical Drive



- Turn the Acer Aspire 3003WLCi so that the back of the laptop is facing towards you.
- You will be opening the tabs on the back of the laptop in order to access the internal components.

Step 15



- Using a metal spudger, lift each tab to access the screws underneath.
- ⓘ There are two screws under the leftmost tab and two screws under the rightmost tab.
- Remove all four screws with the Phillips #00 screwdriver.

Step 16



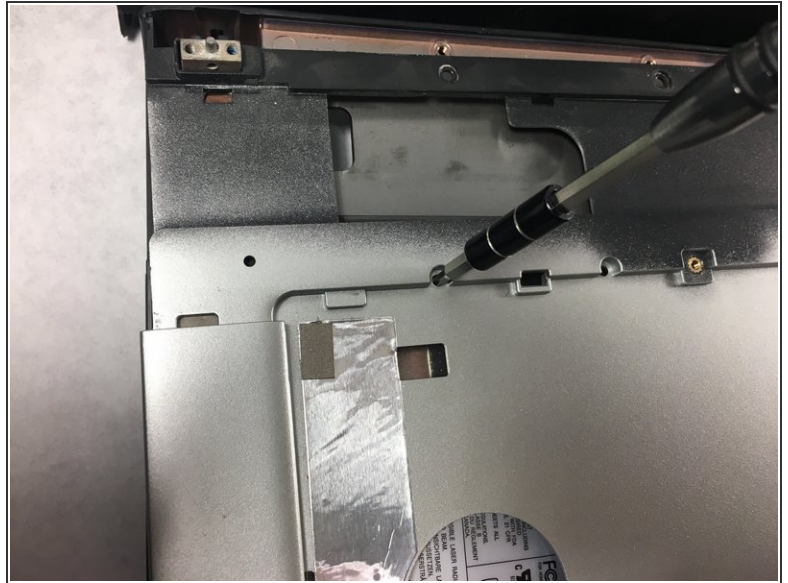
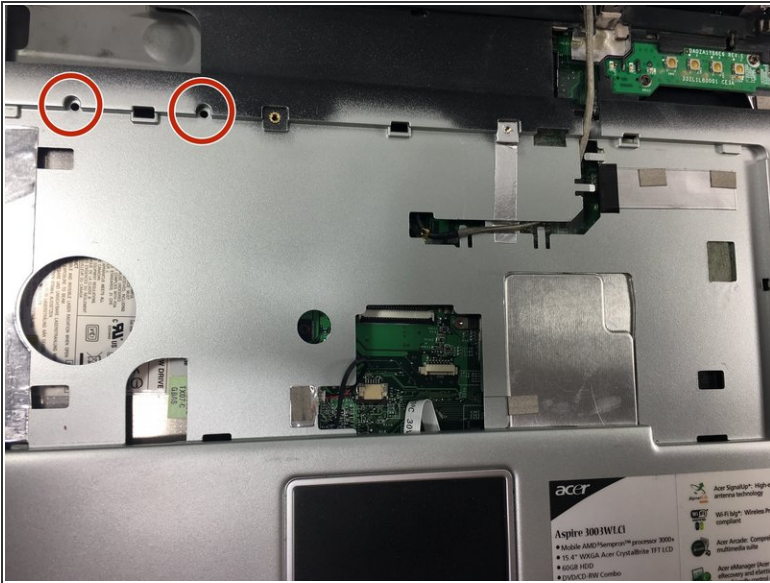
- Lower the display until the 3 screws at the base of the display become visible.
- Using the Phillips #0 screwdriver, remove the highlighted three 5mm screws.

Step 17



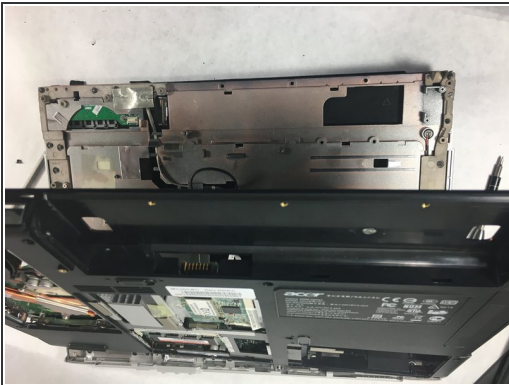
- Using the Phillips #0 screwdriver, remove the two screws that keep the keyboard in place.
- Remove the keyboard and unplug; the plug is under the keyboard when you lift it up.

Step 18



- Using the Phillips #0 screwdriver, remove the two 5mm screws that are highlighted to get access to the internal area of the laptop.

Step 19



- To completely remove the display, flip back over to the other side of the laptop. and unplug the two black and white coaxial cables.

Step 20



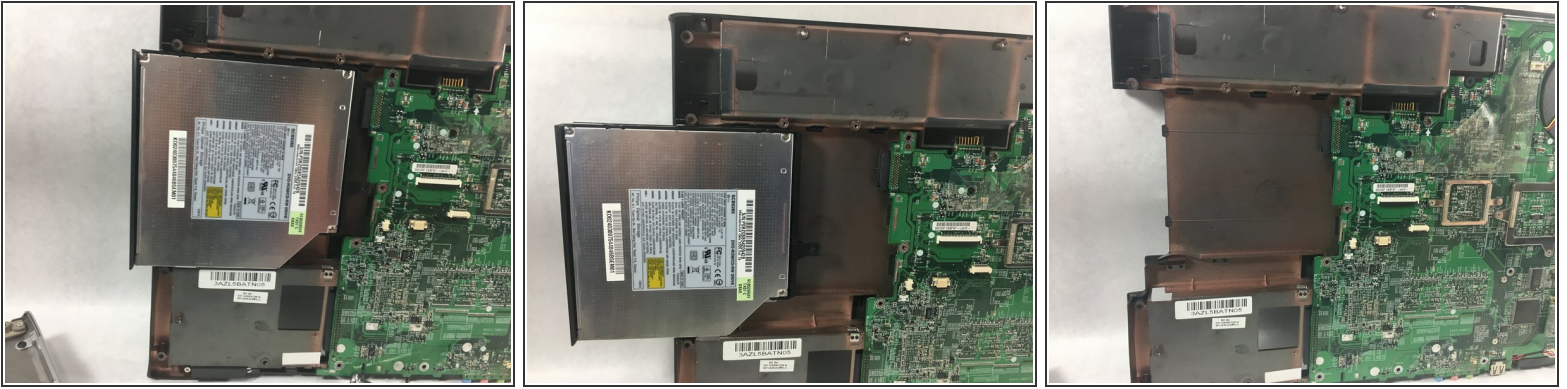
- Flip the laptop over again and unplug the black and red cable from its socket. The display will come off entirely when the cables are removed.

Step 21



- You now have a clear view of the optical drive.
- Using the Phillips #0 screwdriver, remove the 5mm screw that keeps the optical drive in place.

Step 22



- Slide the optical drive out of its socket.

To reassemble your device, follow these instructions in reverse order.