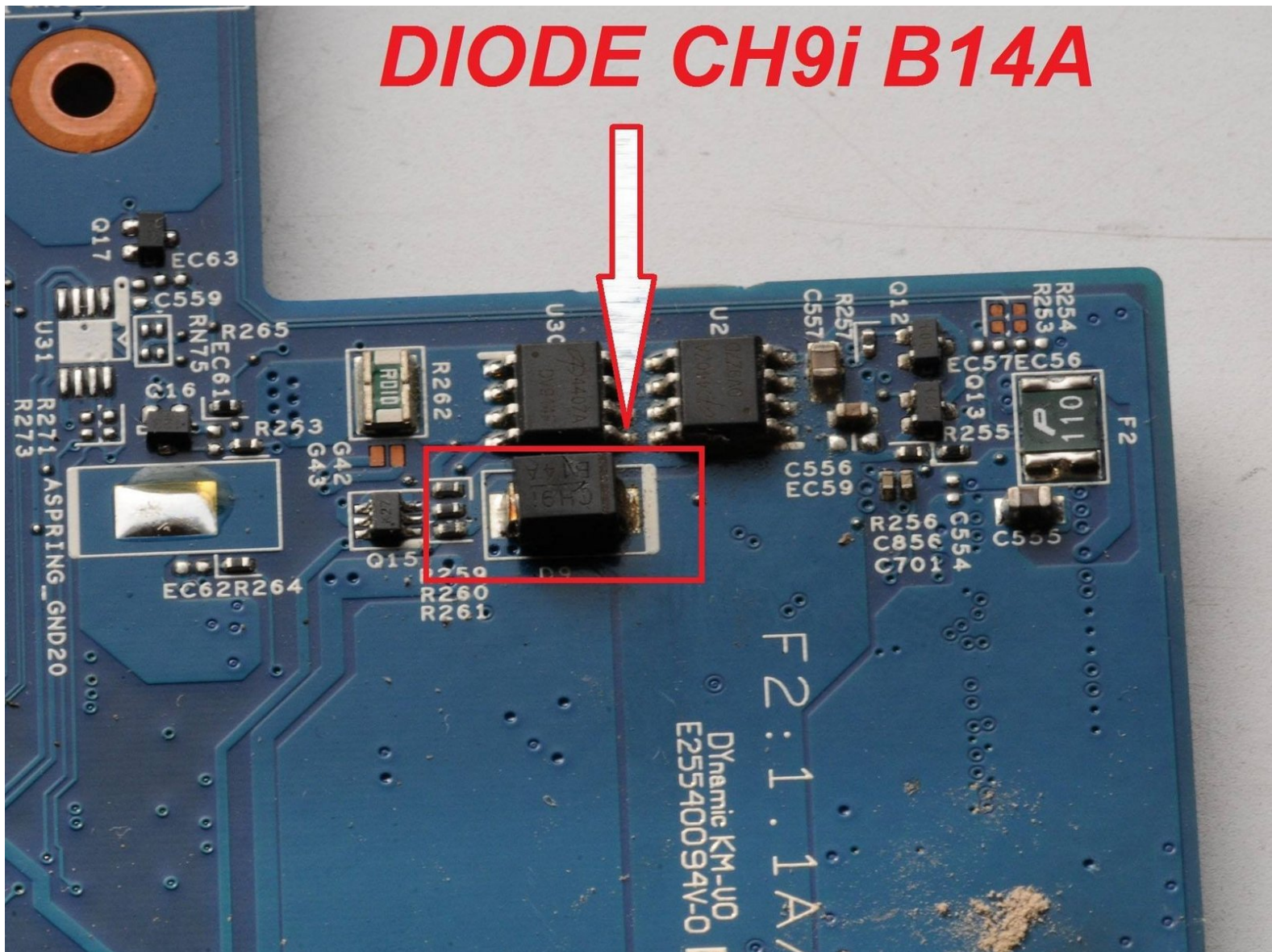




Acer Aspire 5738Z Diode CH9i B14A Replacement

in this video we will show How To Fix Laptop That Won't Turn On by Remove a diode CH9i B14A from mother card

Written By: AMOUR nasreddine



INTRODUCTION

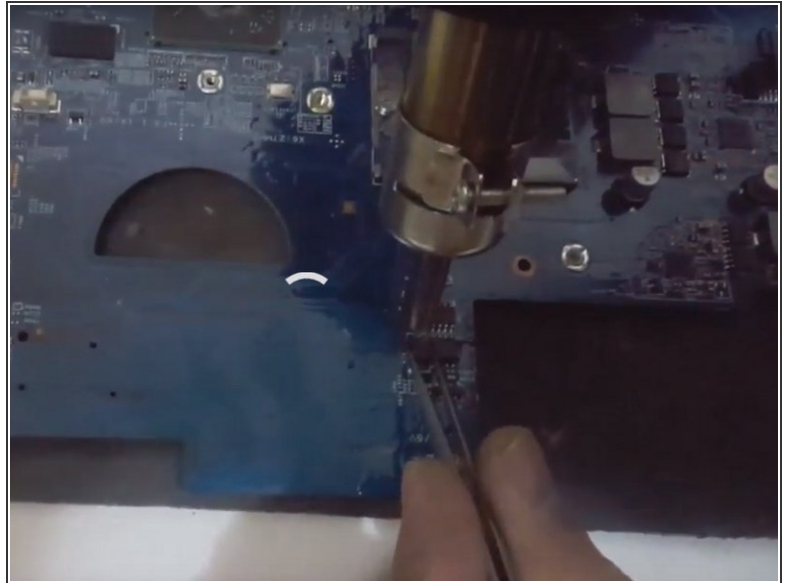
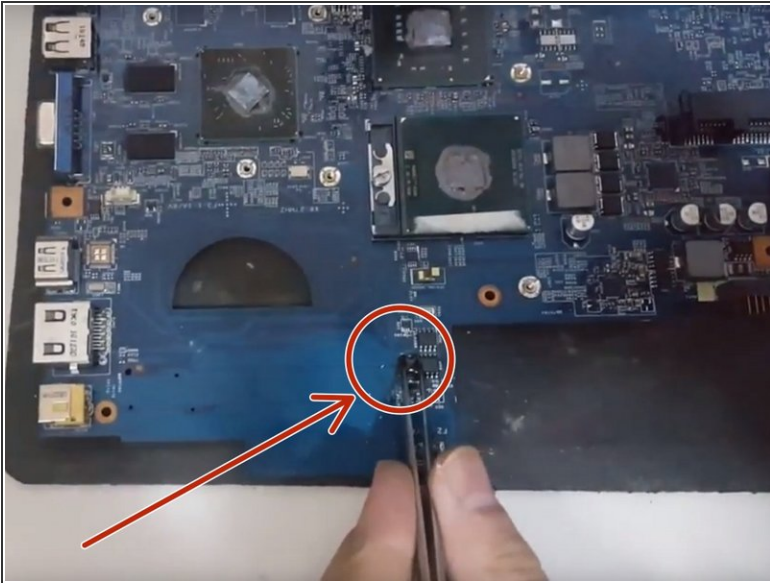
[video: <https://www.youtube.com/watch?v=YdNstA9fF2Y>]



TOOLS:

- [Hot Air Rework Station Hakko FR-810](#) (1)
-

Step 1 — Diodo CH9i B14A



- we hold the diode by a pince
- we remove the diode by the hot air

To reassemble your device, follow the instructions in reverse order.