



Written By: Ian Rodriguez



© iFixit — CC BY-NC-SA

## INTRODUCTION

The WiFi card allows for the user to have internet access. If the WiFi card is broken, the Acer Aspire 5740-6378 will still work, but without the capabilities of using the internet. It is highly suggested that you remove the battery before performing this replacement.

---

### TOOLS:

- [Phillips #0 Screwdriver](#) (1)
  - [Spudger](#) (1)
-



## Step 1 — Battery



- Slide the locking switch into the unlocked position to ready the battery for removal.

## Step 2



- Slide the release latch until the battery pops out.

### Step 3



- Remove the battery now that it's been unsecured.

### Step 4 — WiFi Card



- Flip over the device so the back is facing upward.

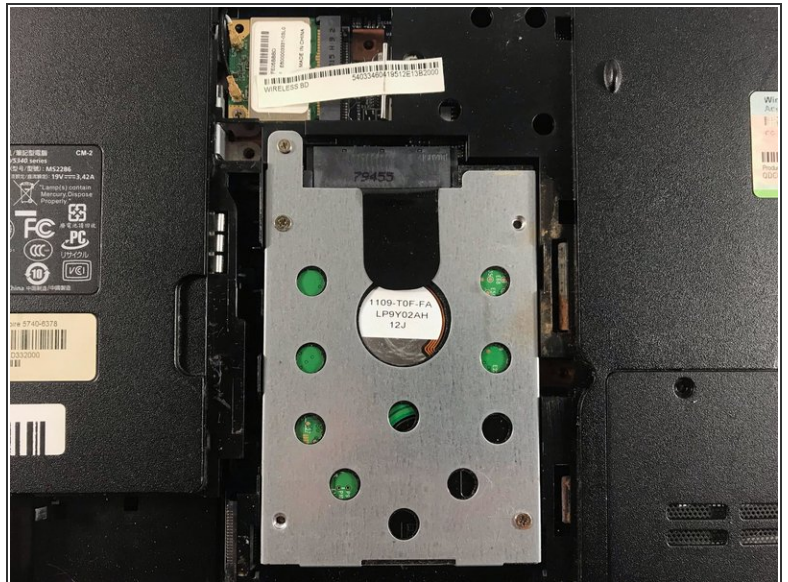


## Step 5



- Remove the five 8.7mm Phillips #0 screws securing the back panel.

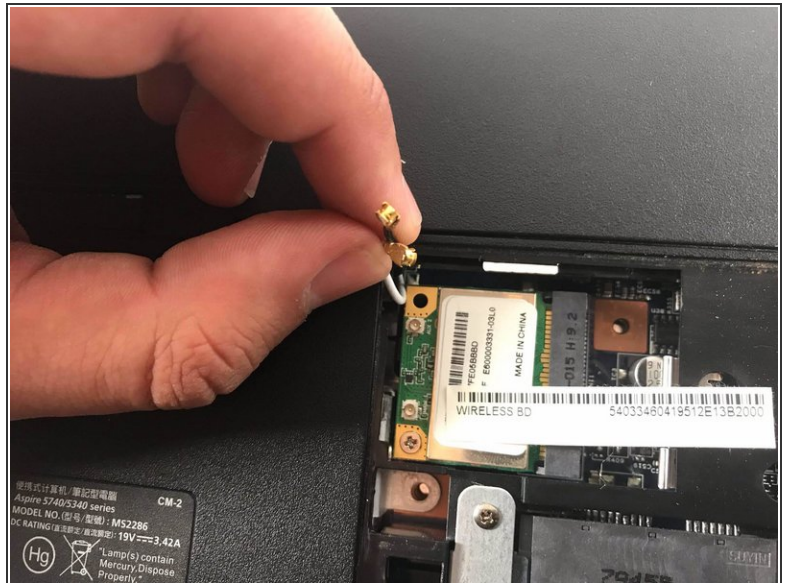
## Step 6



- Use the black spudger to pry open the back panel.

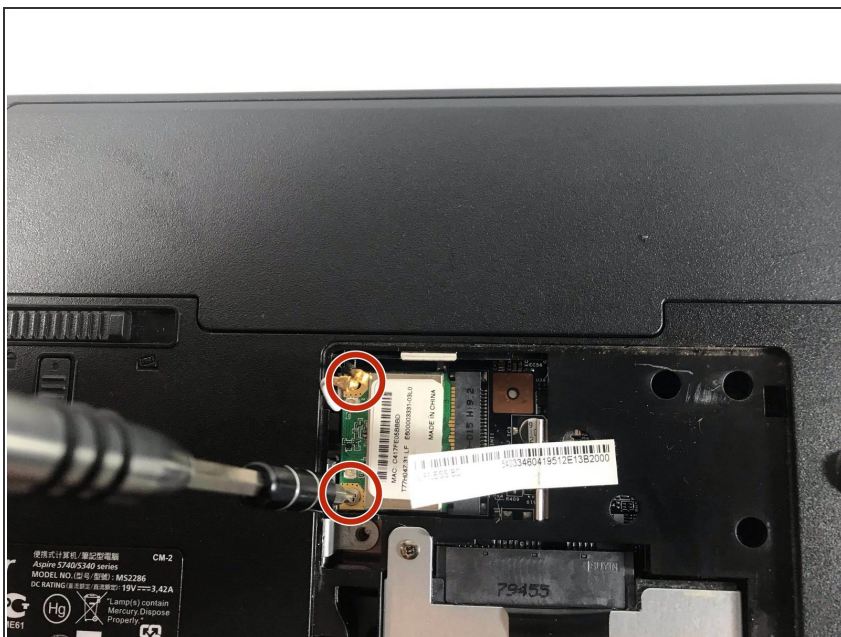


## Step 7



- The WiFi card should be directly above the hard drive. Detach the two coaxial connectors attached to the WiFi card by pulling on them.

## Step 8



- Remove the two 3mm Phillips #0 screws securing the WiFi card.

## Step 9



- Remove the WiFi card.

To reassemble your device, follow these instructions in reverse order.