



Acer Aspire 6530-6522 Keyboard Replacement

This guide will show you how to remove and replace the keyboard of your Acer Aspire 6530-6522.

Written By: William Michaud



INTRODUCTION

This guide will show you how to remove the keyboard of your device in order to replace it. You may need to do this if it has become non-responsive or faulty, or if keys are missing.

TOOLS:

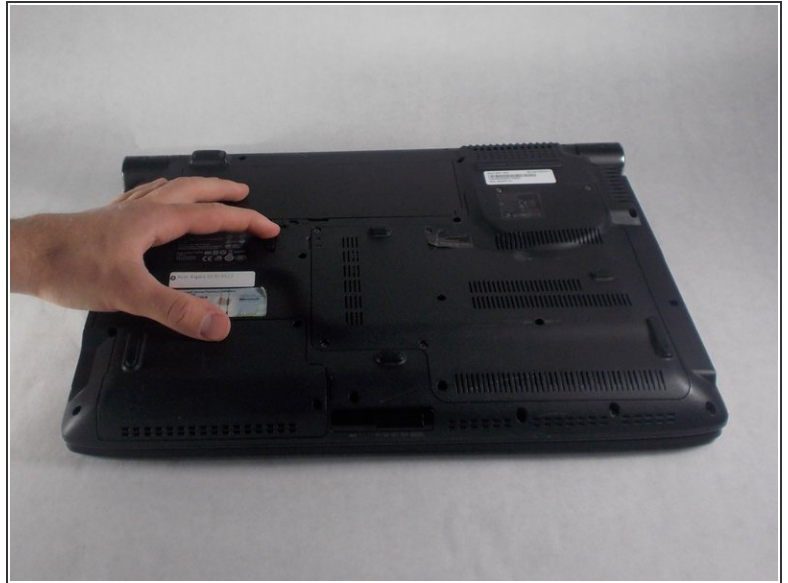
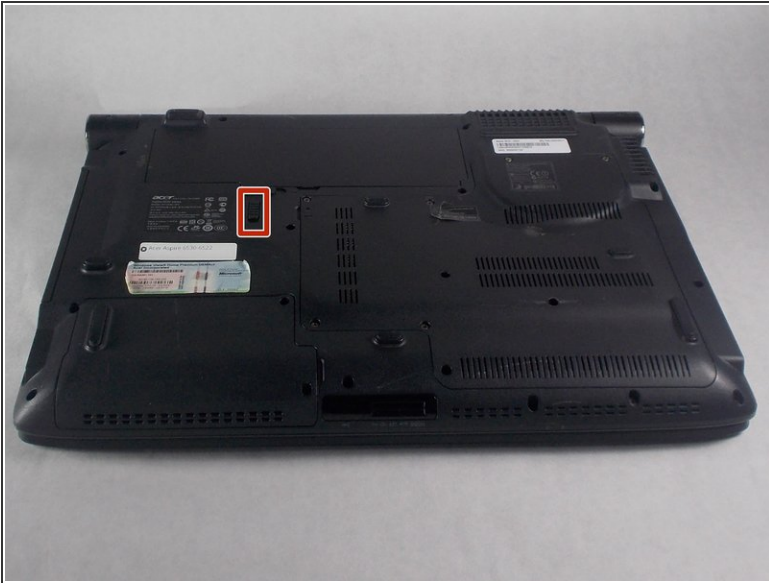
- [iFixit Opening Tools](#) (1)
 - [Phillips #1 Screwdriver](#) (1)
 - [Spudger](#) (1)
-

Step 1 — Battery



- Make sure the device is unplugged and completely powered down.
- Turn the device over.

Step 2



- The lock switch can slide either towards or away from the battery. If it is pushed towards the battery, the release switch is locked and the battery can not be released.
- Slide the switch away from the battery.

Step 3



- The battery release switch is just to the inside of the battery and slides parallel to it.
- Push the switch to the side. It is not just an open or close switch, it actually pops the battery up so you will feel some resistance.
- ☑ When inserting a battery back into the device, you do not need to touch this switch. Just press the battery firmly down, you will see and hear this switch catch.

Step 4



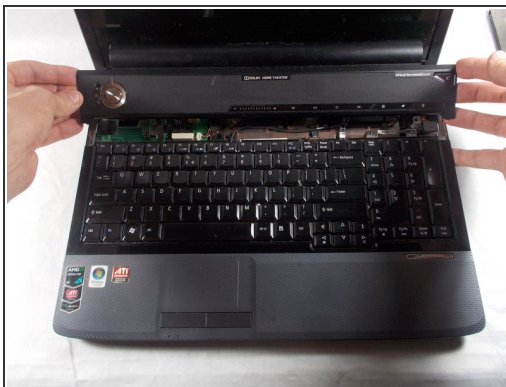
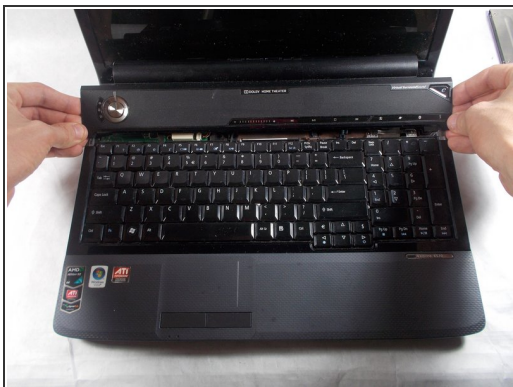
- Pull the battery up and out. Use a plastic opening tool if necessary.

Step 5 — Keyboard



- Using the Phillips #1 screwdriver, remove the nine 7mm screws holding the top panel.
- Flip device right side up and open it.

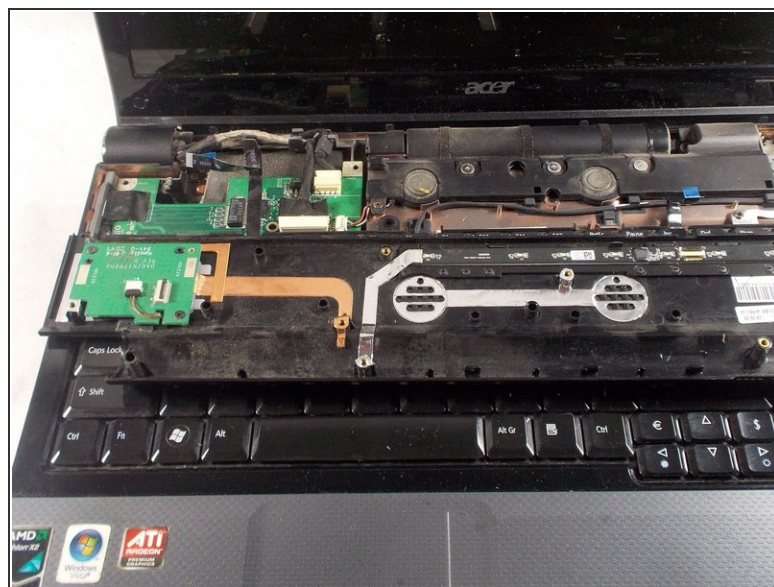
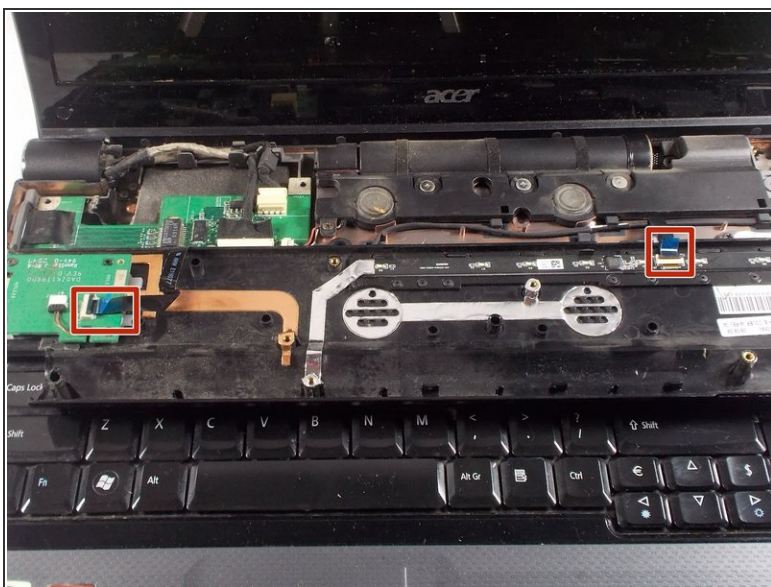
Step 6



- Lift the top panel up, rotating forward onto the keyboard.

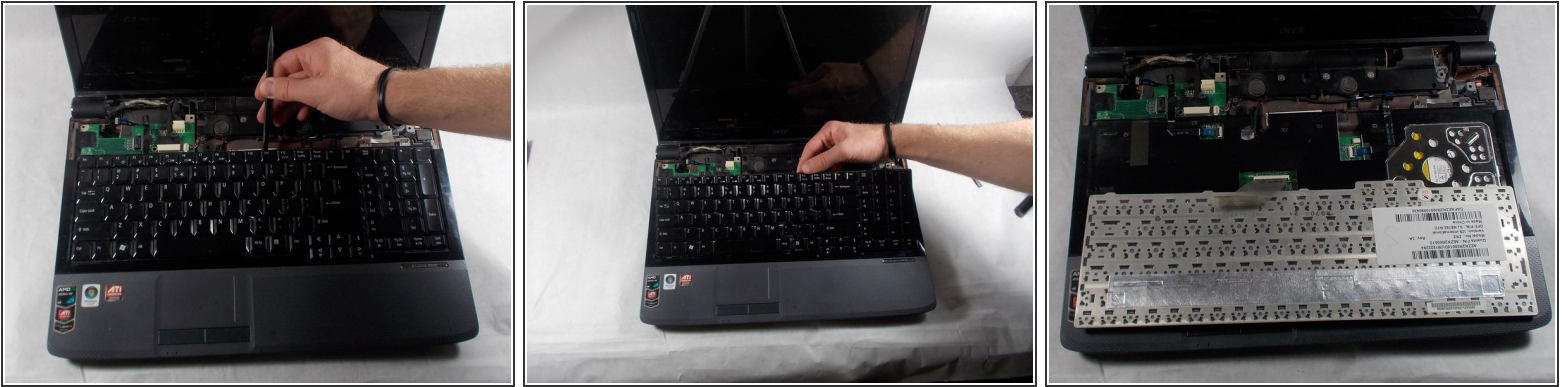
i Do not try to remove yet, cables are still attached.


Step 7



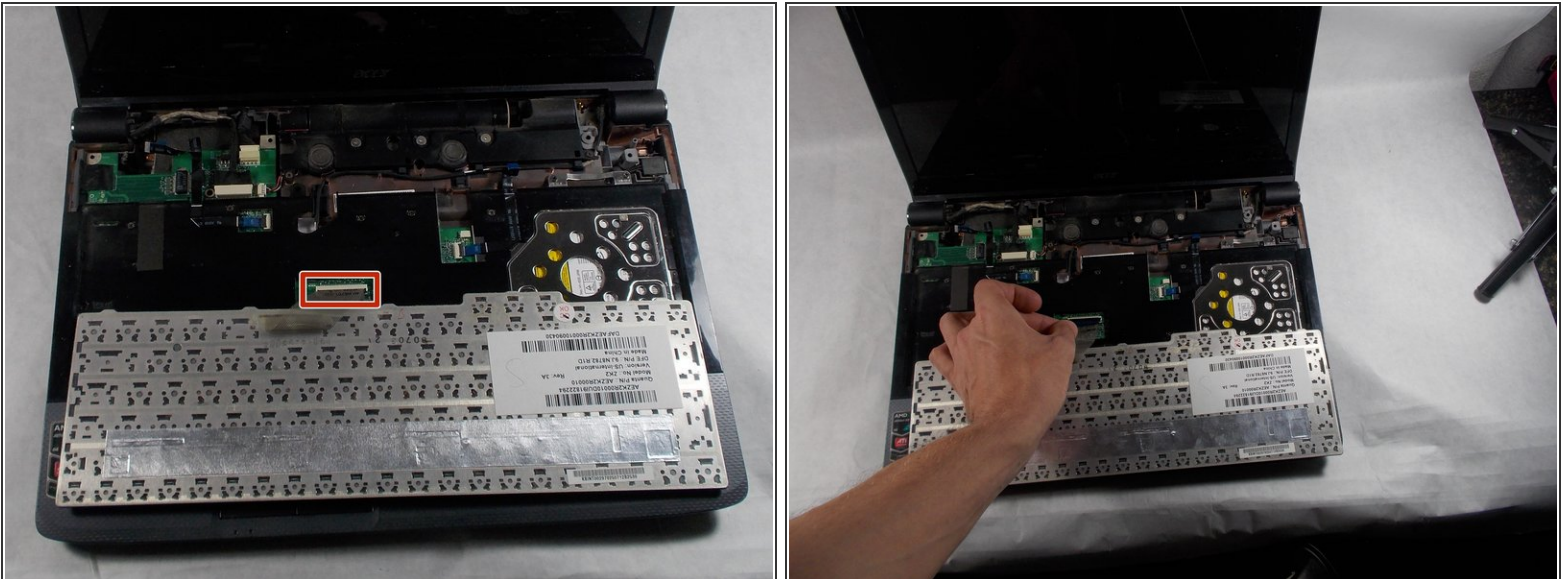
- Lift the black latch on each connection securing the cables.
- Pull the cable free.

Step 8



- Lift the keyboard up by the center of the back. You may need a plastic tool such as the black plastic spudger to get under the edge.
- Lift up, pulling the edges from under the top cover, and lay down on the front of the device.
-  Do not pull away, there is still a cable connecting the keyboard.

Step 9



- Lift the black clasp holding the cable.
- Pull the cable free.
- Remove the keyboard.

To reassemble your device, follow these instructions in reverse order.