



# Acer Aspire 7736Z-4809 LCD Module Replacement

The monitor does not work properly. Replacing the LCD module may solve this problem.

Written By: Pnithan Jantarakolica



---

# INTRODUCTION

Before replacing the LCD module, make sure to back up your laptop.

---

## TOOLS:

- [Phillips #1 Screwdriver](#) (1)
  - [iFixit Opening Tools](#) (1)
  - [Metal Spudger](#) (1)
  - [Tweezers](#) (1)
-

## Step 1 — Acer Aspire 7736Z-4809 Repair Preparation



- Unplug and power off the laptop.
- ⓘ If the battery is still connected to the laptop, remove the battery.

## Step 2



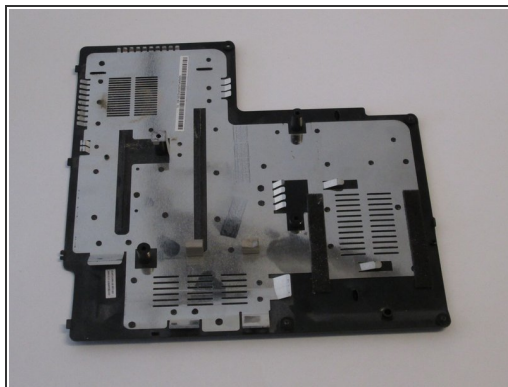
- Flip over the laptop so that the back panel of the laptop is facing up.

## Step 3 — Back Panel



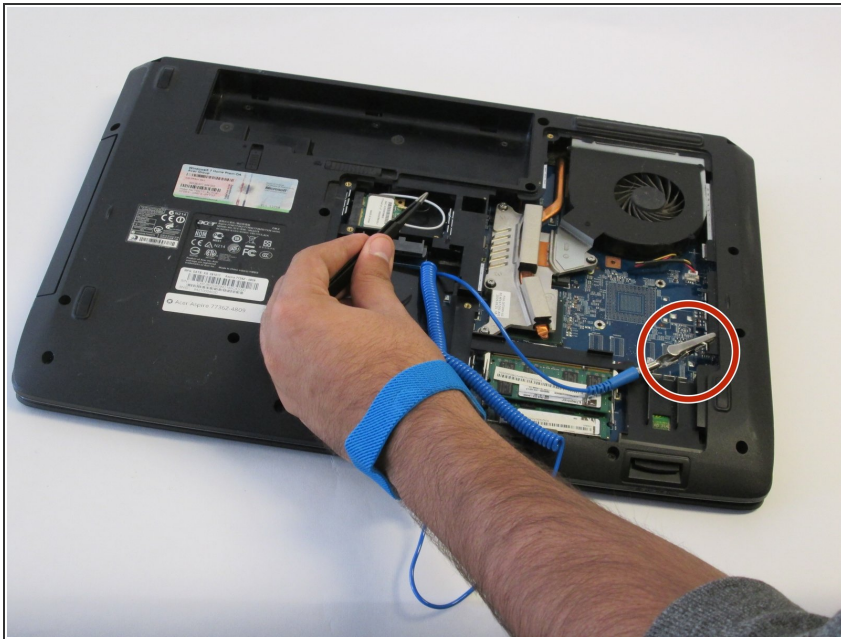
- Use the Phillips #1 screwdriver to remove the eight 6.5 mm Phillips #1 screws.
- ❗ Only the four screws in the center are removable, the four along the edges are held in by rivets but can be loosened.

## Step 4



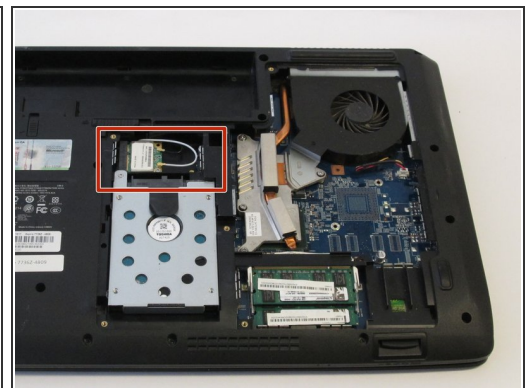
- Remove the back panel of the laptop.

## Step 5



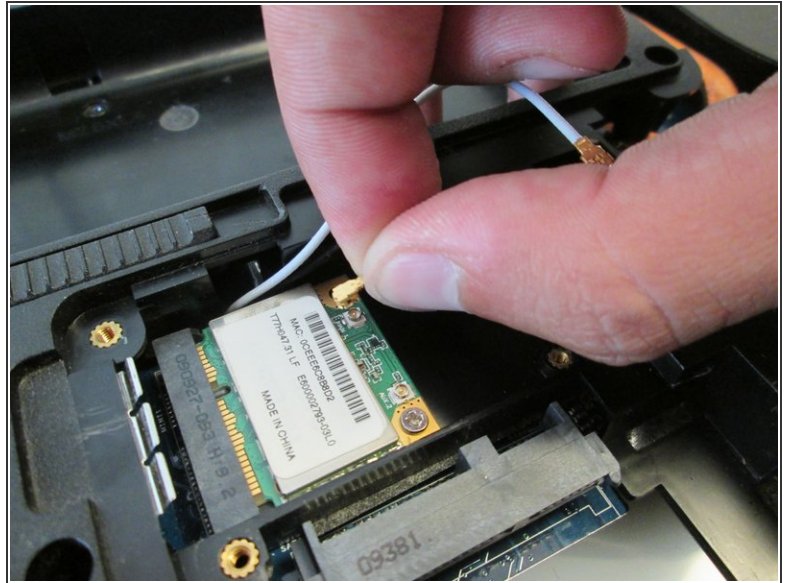
- Connect a grounding cord to a metal interface on the laptop.
- ⚠ Ground the laptop to prevent static electricity from damaging the electrical components inside the laptop.

## Step 6 — Wireless Module



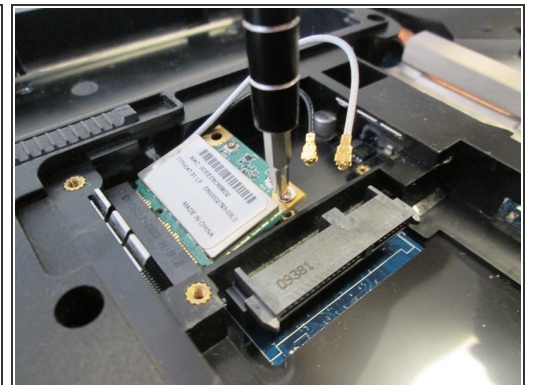
- Remove the white antenna of the wireless module.
- ⓘ Use tweezers if you do not prefer using hands.

## Step 7



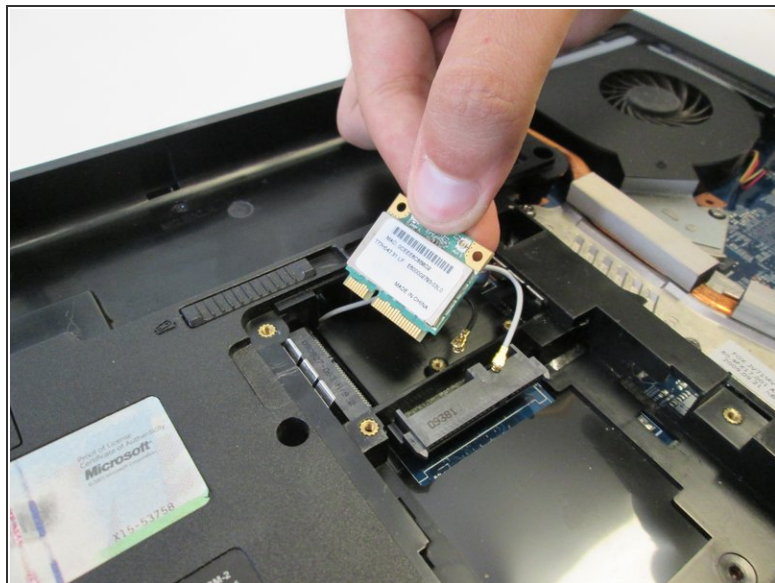
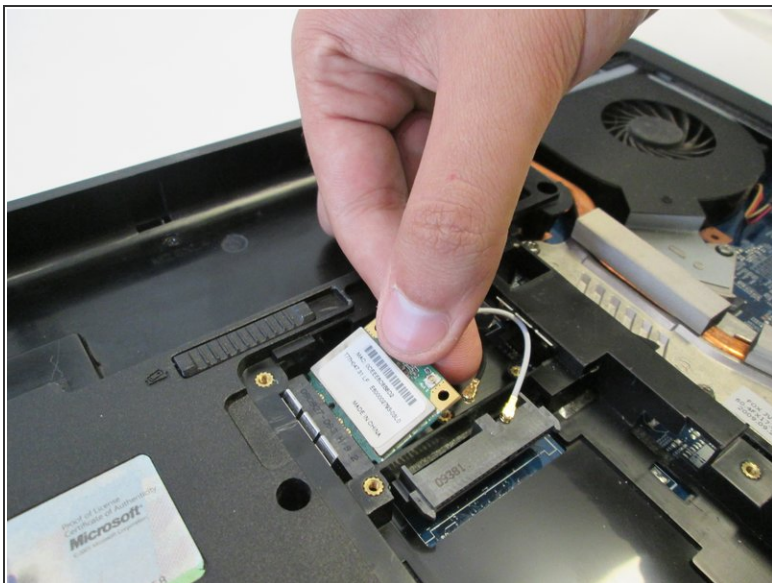
- Remove the black antenna of the wireless module.
- ① Use tweezers if you do not prefer using hands.

## Step 8



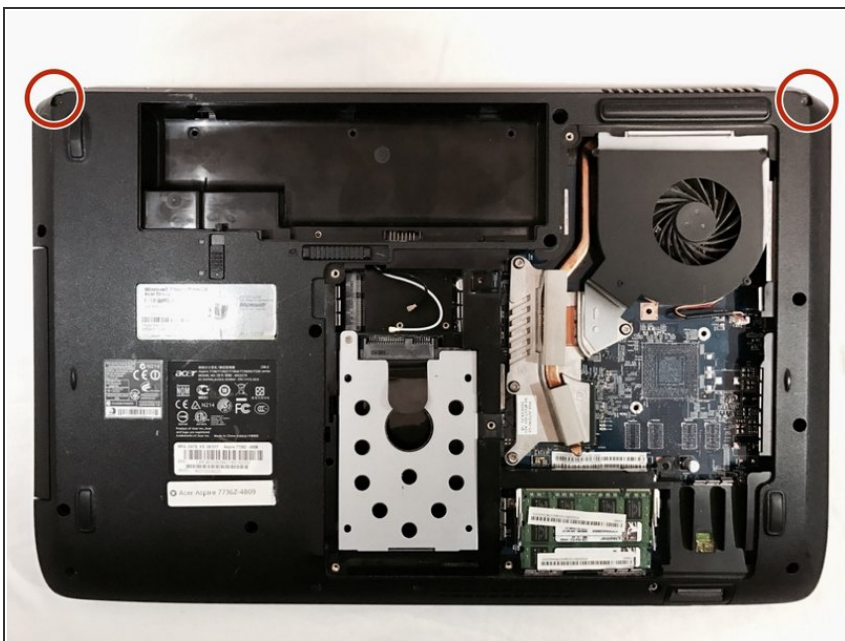
- Use the Phillips #1 screwdriver to remove the two 4.8mm Phillips #1 screws.

## Step 9



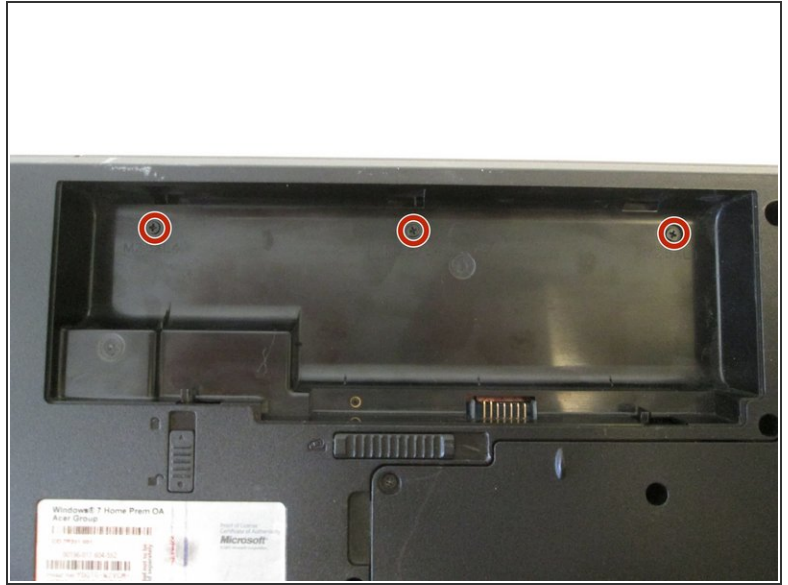
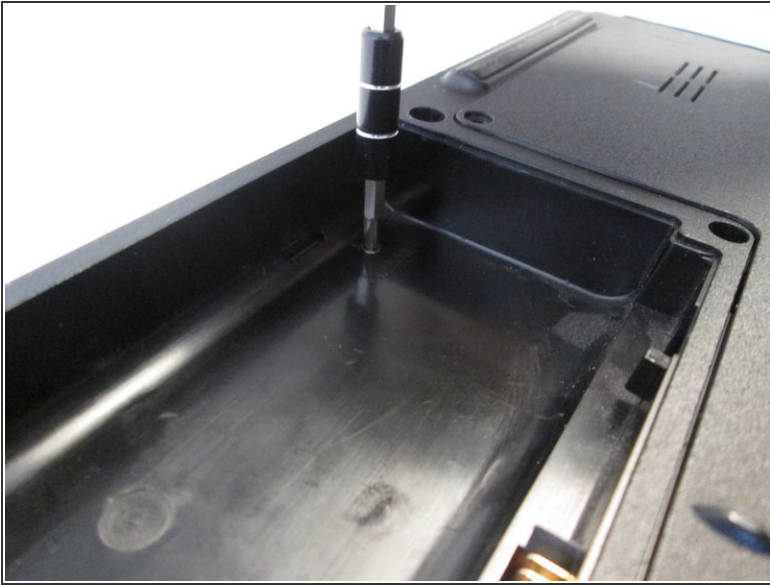
- Remove the wireless module from the laptop.

## Step 10 — LCD Module



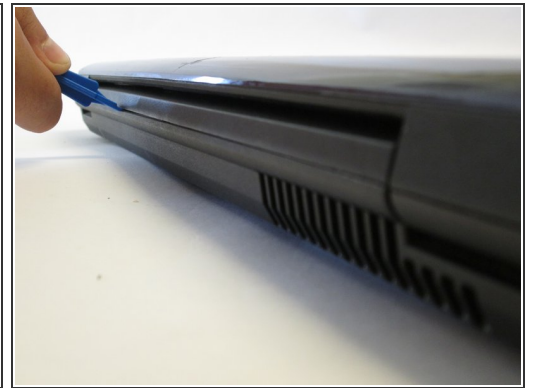
- Use the Phillips #1 screwdriver to remove the two 6.5mm Phillips #1 screws.

## Step 11 — Keyboard



- Use the Phillips #1 screwdriver to remove the three 4.5mm Phillips #1 screws.

## Step 12



- Orient the laptop so that the hinges between the LCD module and the laptop's bottom base are visible.
- Use the plastic opening tools to separate the speaker panel from the laptop.

## Step 13



- Flip over the LCD module of the laptop.
- Use the plastic opening tools to separate the speaker panel from the laptop.
- ① Insert the opening tool into the crack between the panel and the frame at either end. Slide the opening tool across the line. Reinsert the opening tool into the crack and apply leverage until the frame releases.
- Repeat this step with the other side of the laptop.

## Step 14



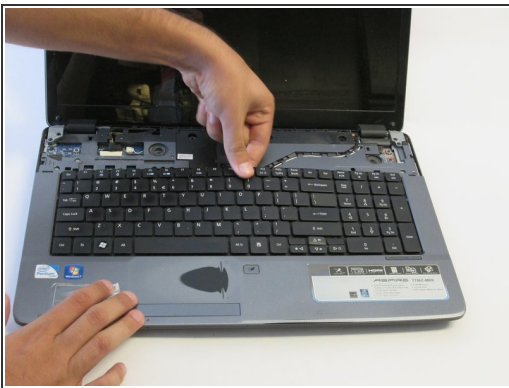
- Gently hold the speaker panel by the sides and pull upwards to release the panel.

## Step 15



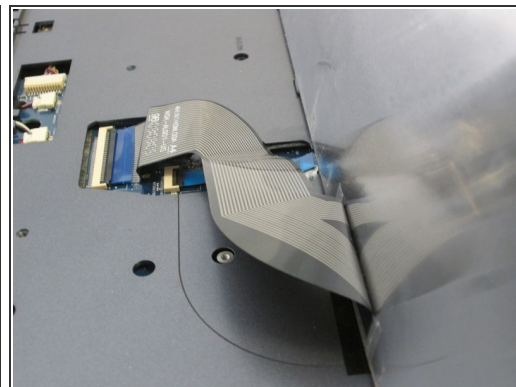
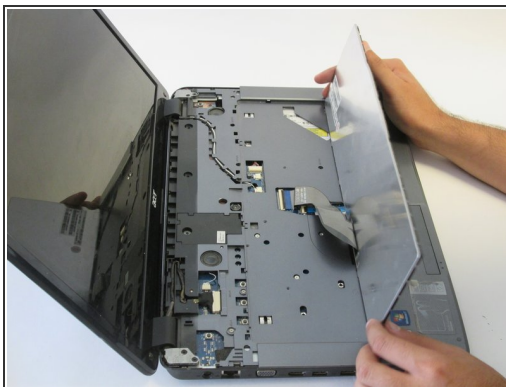
- Use the flat end of the medium sized metal spudger tool to release the two tabs at the top of the keyboard.
- ⚠ Do not remove the keyboard yet.

## Step 16



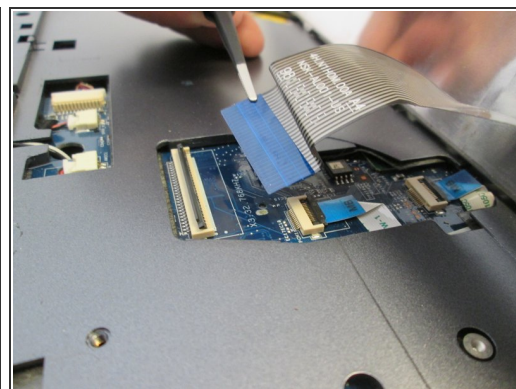
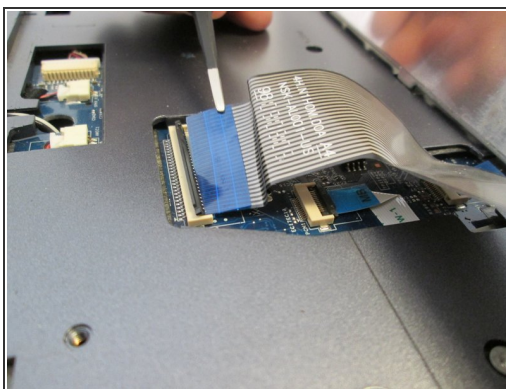
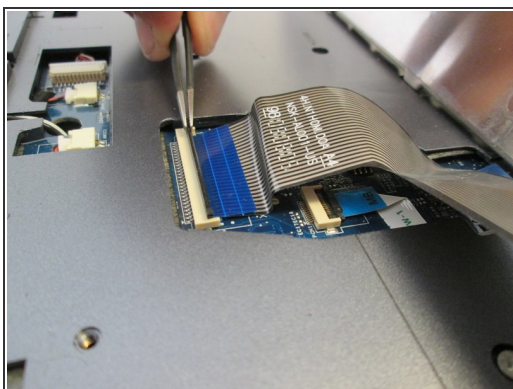
- Insert a finger into the opening above the F11 key and pry the keyboard until it is released from the casing.

## Step 17



- Gently raise the keyboard with your hands.

## Step 18



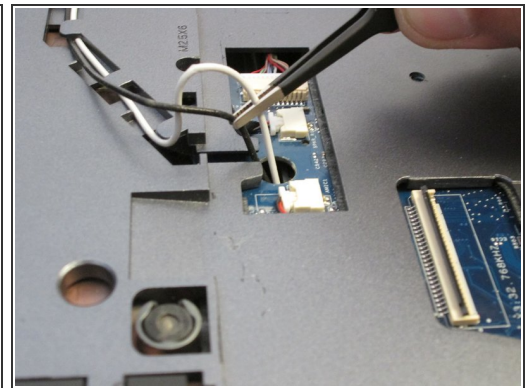
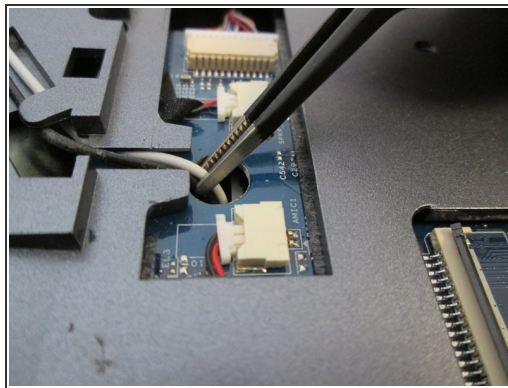
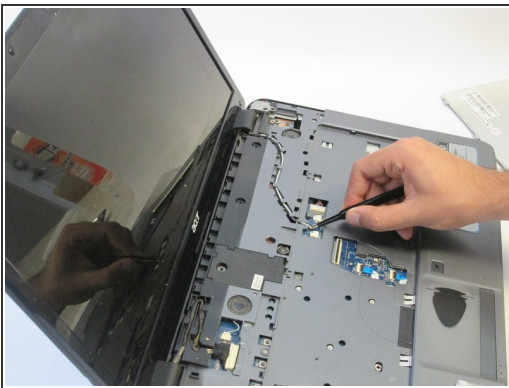
- Lift the black latch upwards to release the ZIF connector.

## Step 19



- Remove the keyboard from the keyboard slot.

## Step 20 — LCD Module

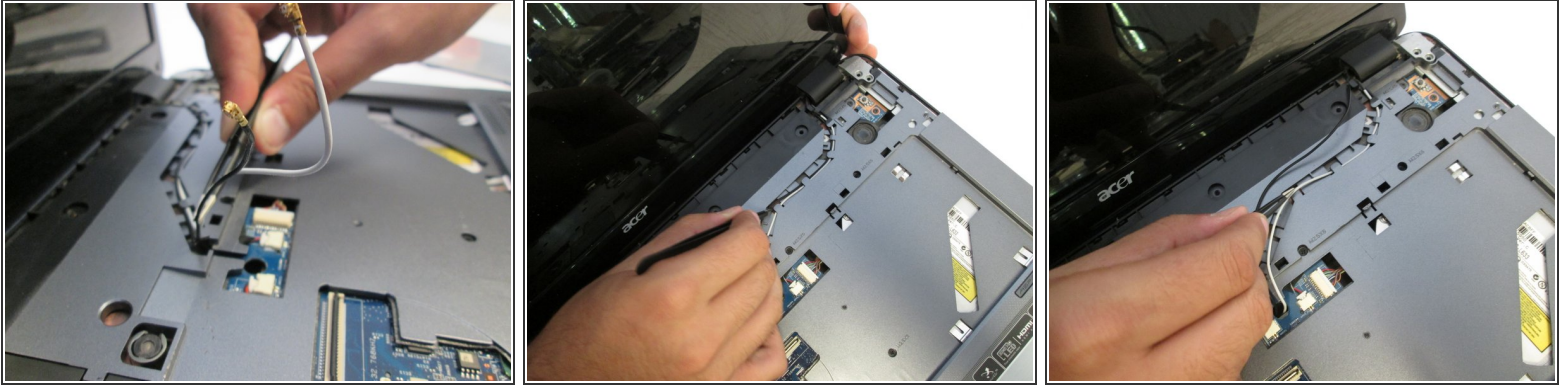


- Use tweezers to pull the black and white antennas out of the hole.

⚠ Handle this step with care.

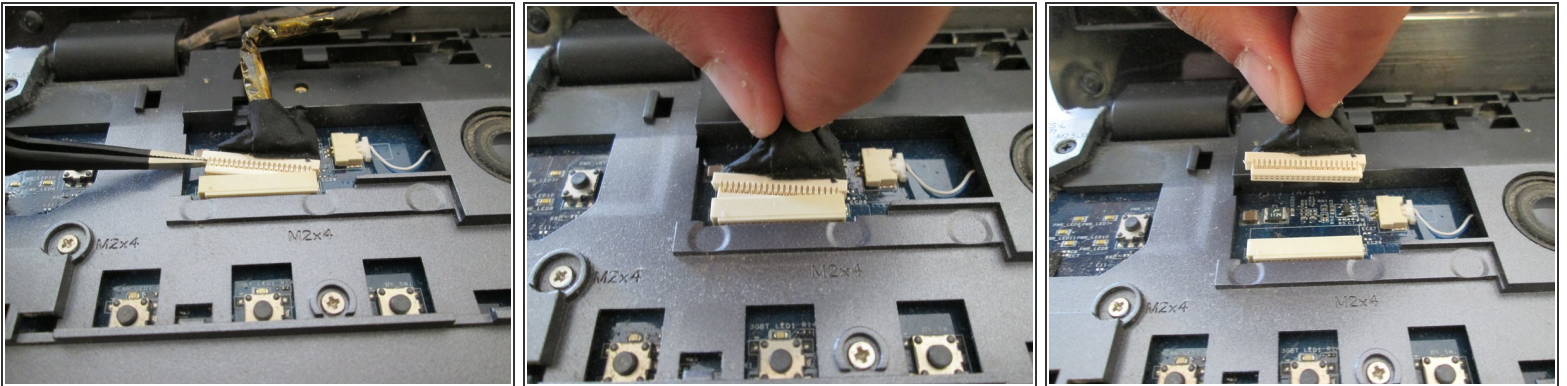
ⓘ These are the same antennas of the wireless module.

## Step 21



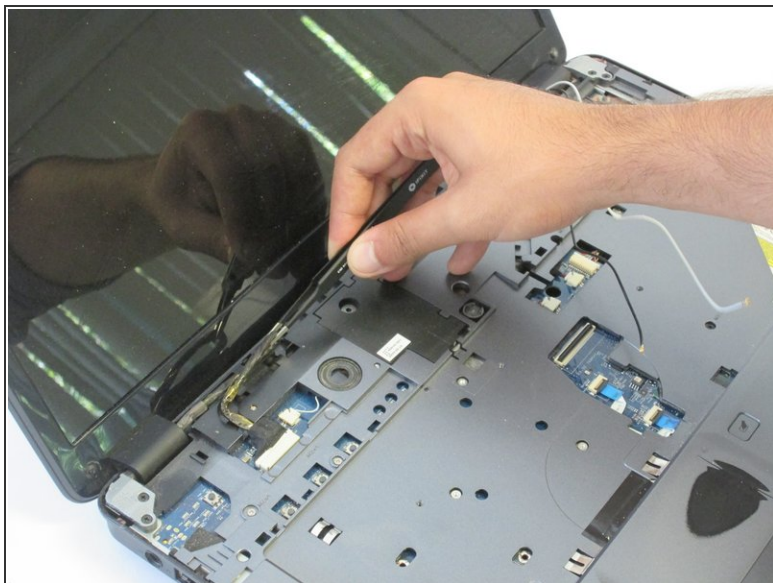
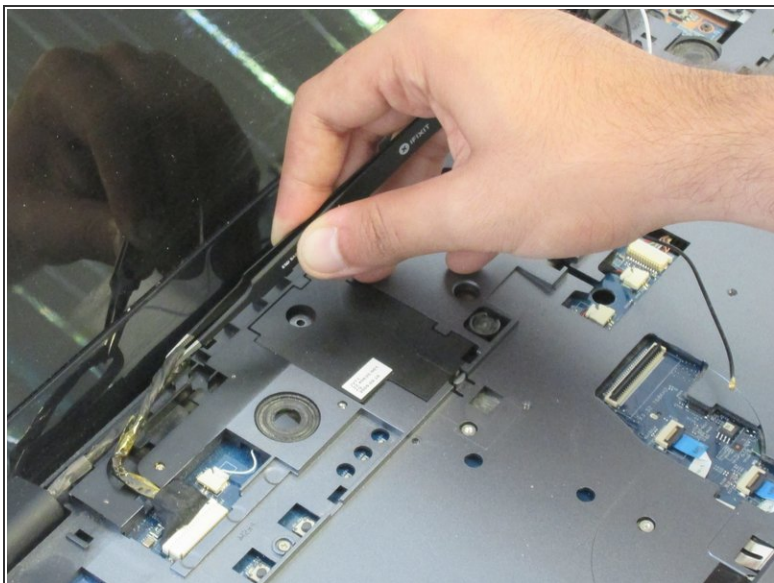
- Remove the antennas from underneath the tabs that hold them in place.
- ⓘ Do this until they are no longer underneath any tabs.
- ⚠ Be careful when handling with the antennas since they are sensitive.

## Step 22



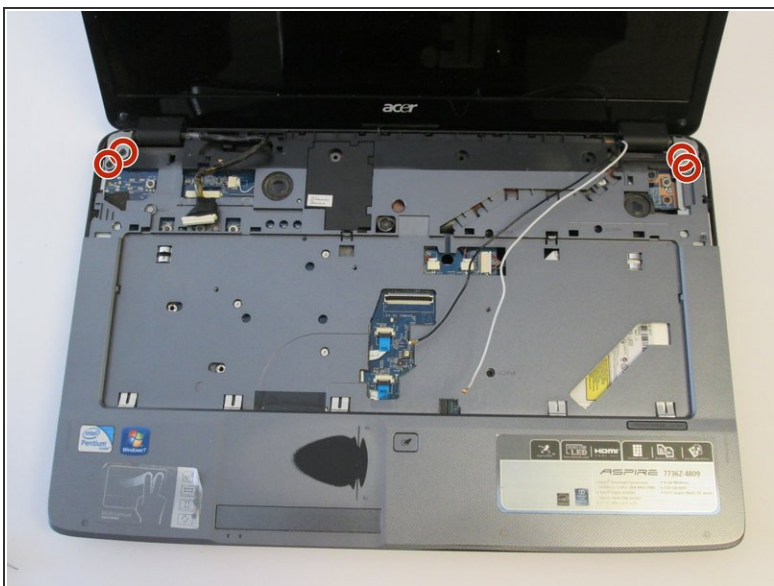
- Use tweezers to push the cable out of the port.
- ⓘ The cable is located on the left side of the open laptop.
- ⚠ Be careful when handling the cable.

## Step 23



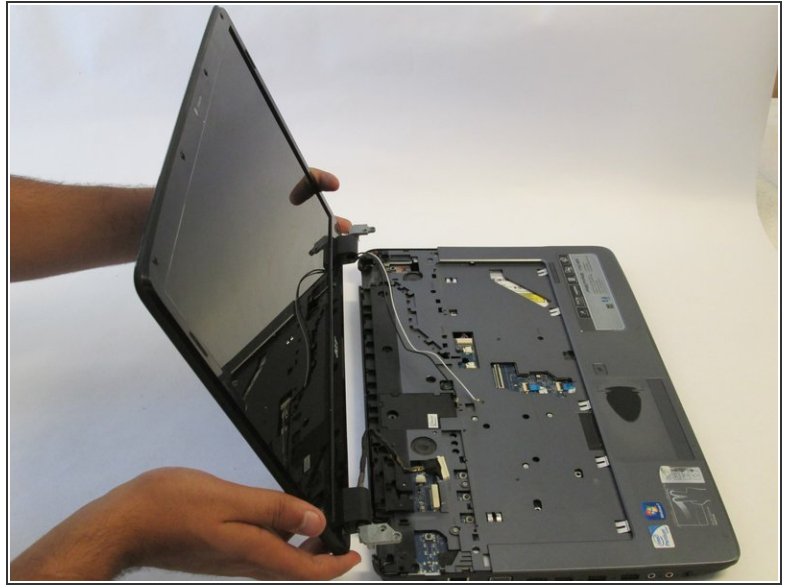
- Release the cable from the tabs holding it in place.

## Step 24



- Use the Phillips #1 screwdriver to remove the four 11mm Phillips #1 screws.

## Step 25



- Grab the display assembly from the base and lift it up and off the base.

To reassemble your device, follow these instructions in reverse order.