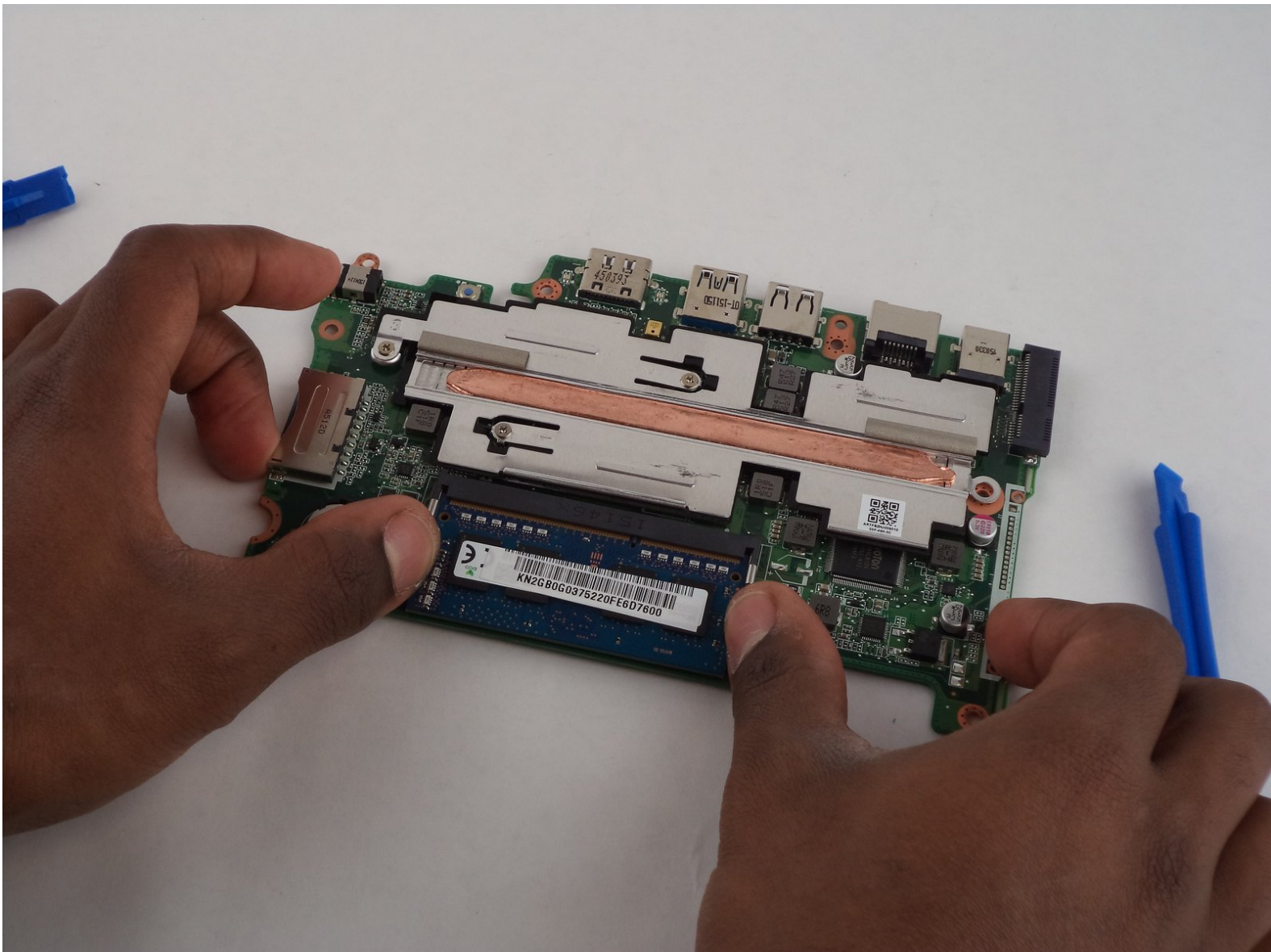




Acer Aspire E 11 RAM Replacement

This guide will walk you through the proper steps in removing the RAM from your device.

Written By: Robert Cobaich



INTRODUCTION

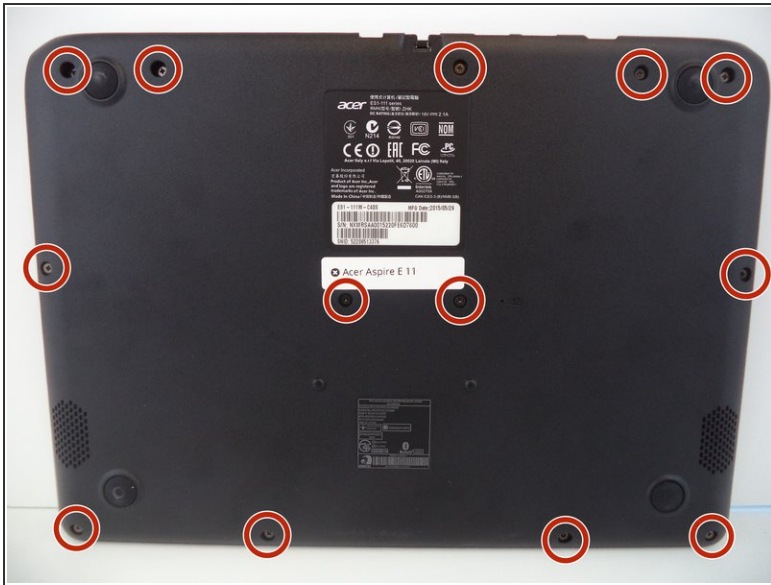
This guide will walk you through the process of replacing the RAM on an Acer Aspire E 11.



TOOLS:

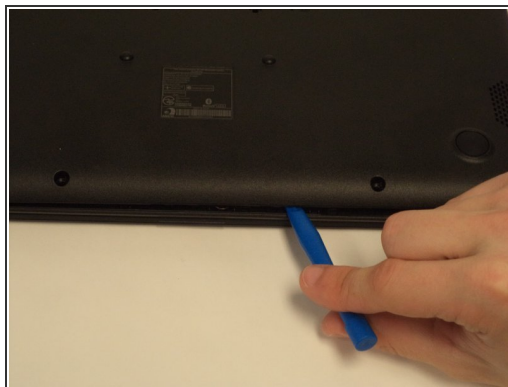
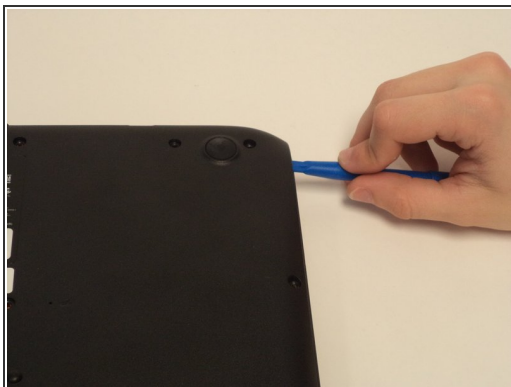
- [Phillips #1 Screwdriver](#) (1)
 - [iFixit Opening Tools](#) (1)
-

Step 1 — Lower Case



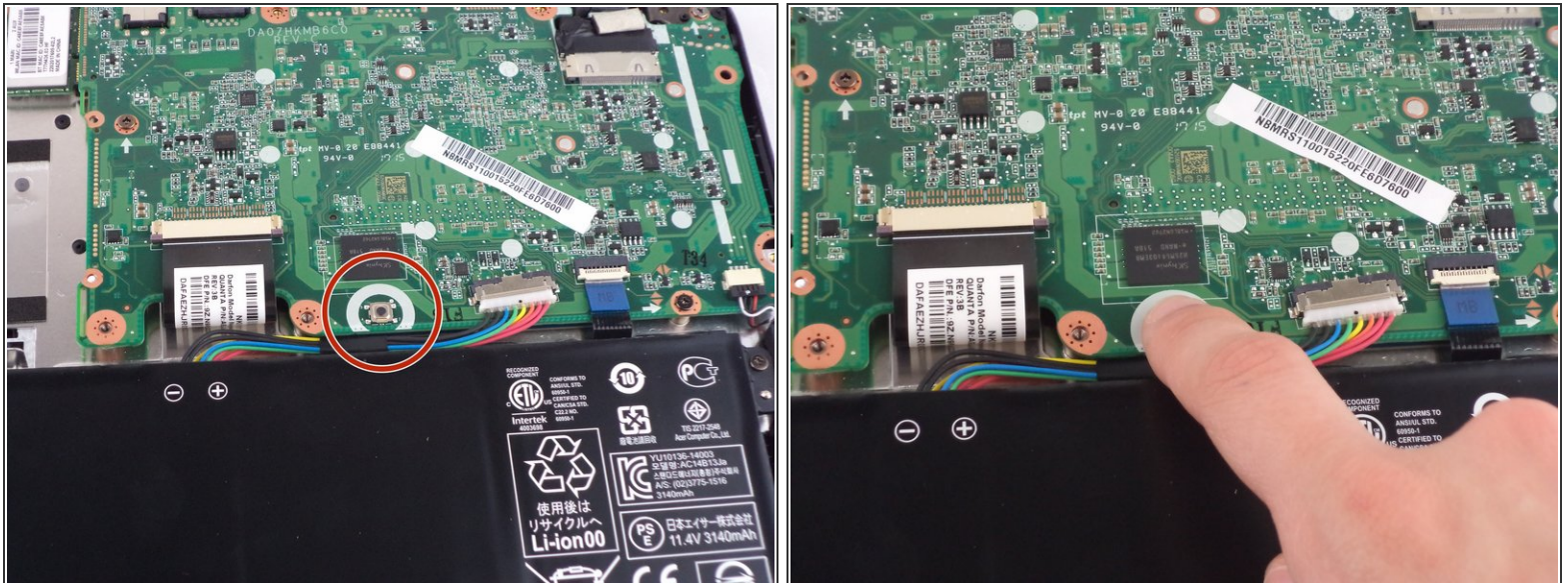
- Unscrew the thirteen 6.2mm Phillips #1 screws located on the bottom of the device.

Step 2



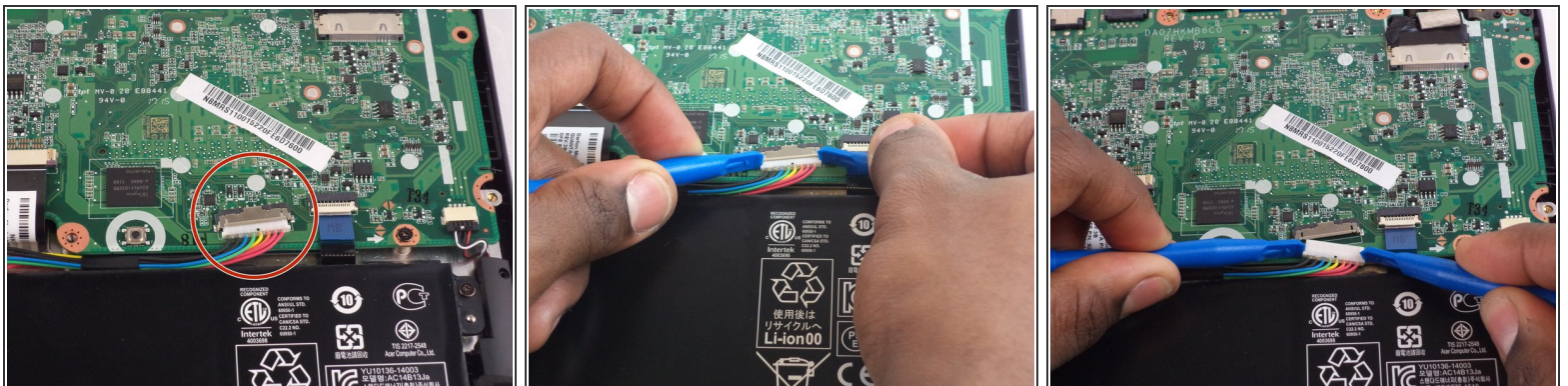
- Lift the back panel using a plastic opening tool. Slowly make your way around the device until the back panel comes off.

Step 3 — Battery



- Press and hold the small black button located on the motherboard just above the battery for five seconds.

Step 4



- Using two plastic opening tools tightly grab the connector going from the battery to the motherboard and pull to unplug.

Step 5



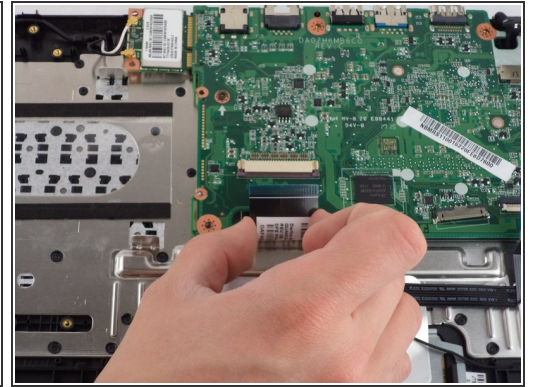
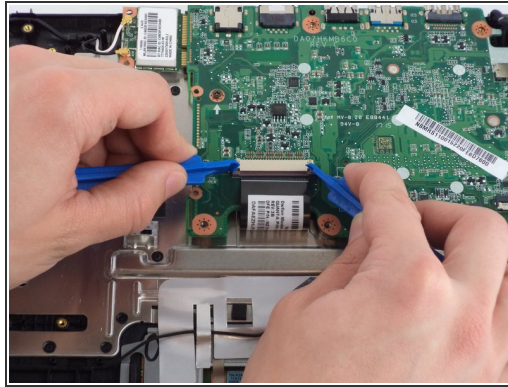
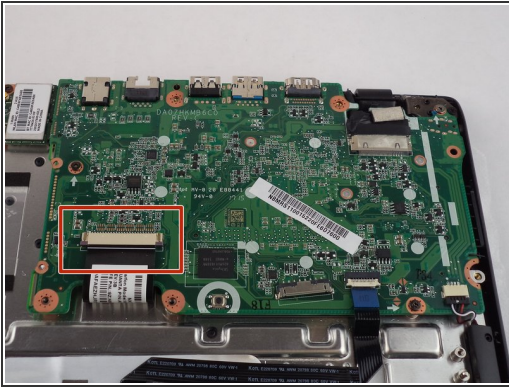
- Unscrew two 6.2 mm Phillips #1 screws on the right and left sides of the battery.

Step 6



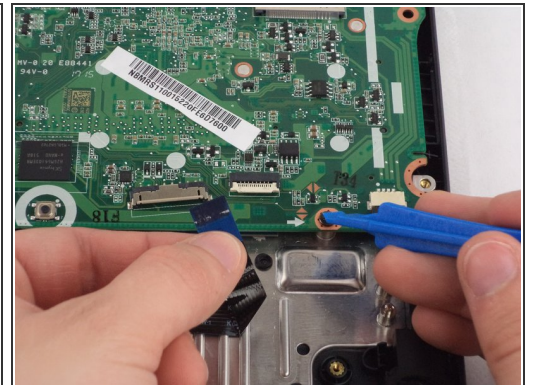
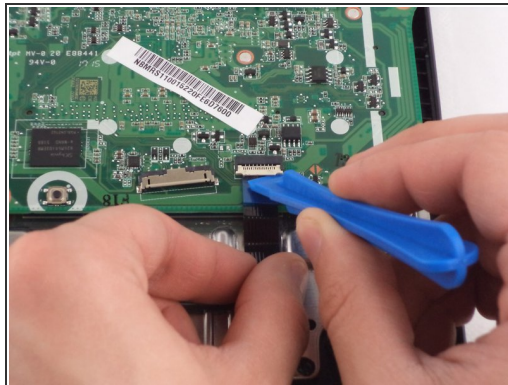
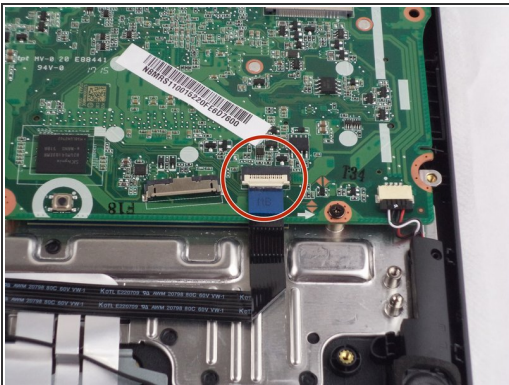
- Carefully remove the battery by lifting it out of the casing.

Step 7 — Motherboard



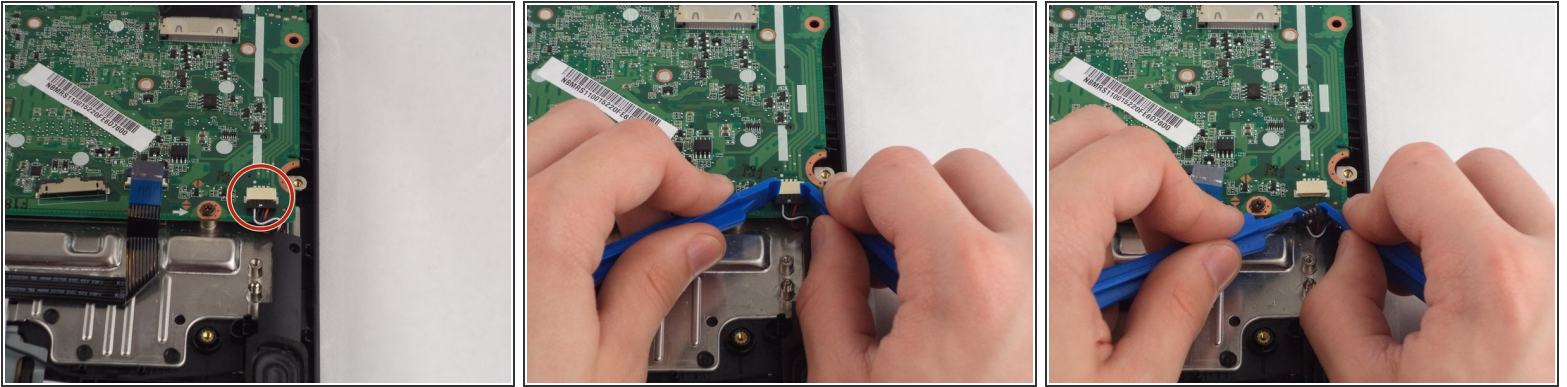
- Locate the keyboard cable on the motherboard. Using, two plastic opening tools on each side of the connector, pull the two gray tabs outward and then remove the cable from the motherboard.

Step 8



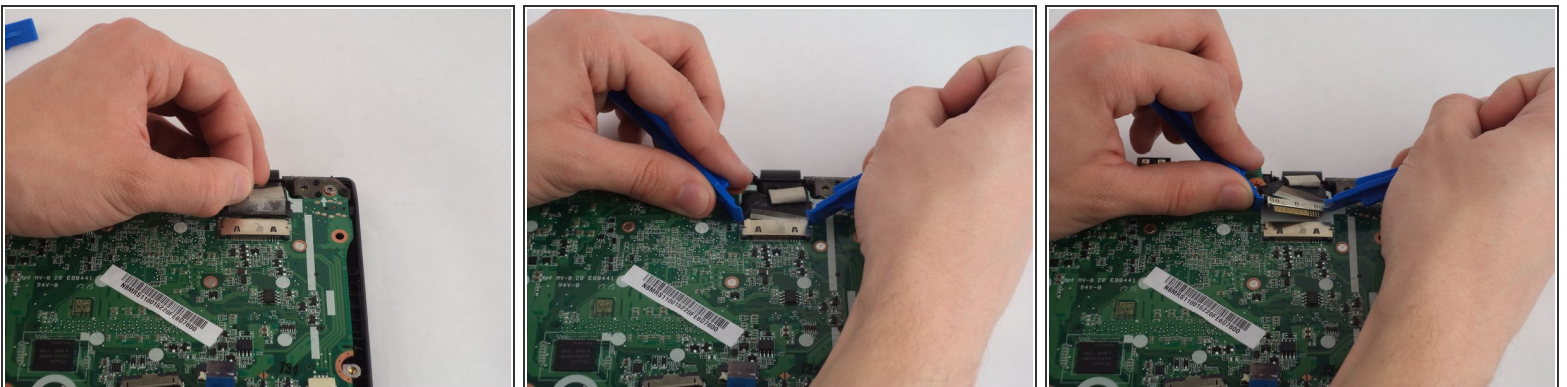
- Use a plastic opening tool to carefully lift the white hinge up on the touchpad cable connector, and gently remove the cable from the motherboard.

Step 9



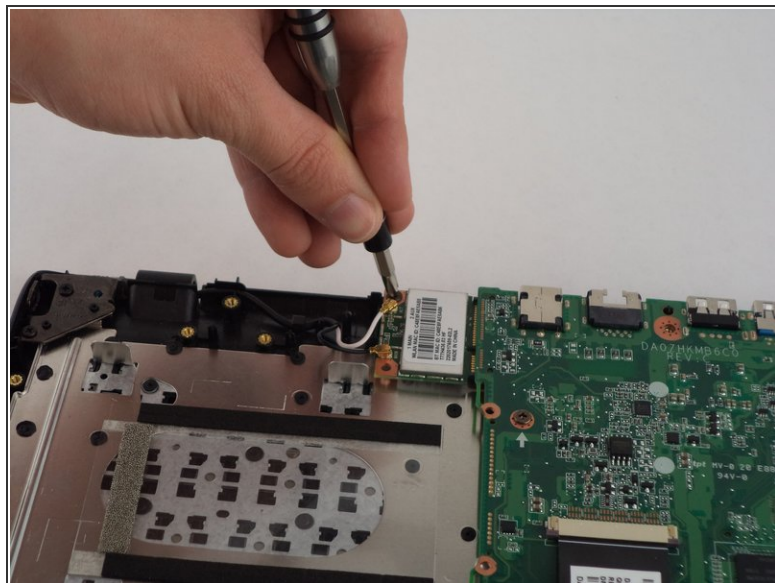
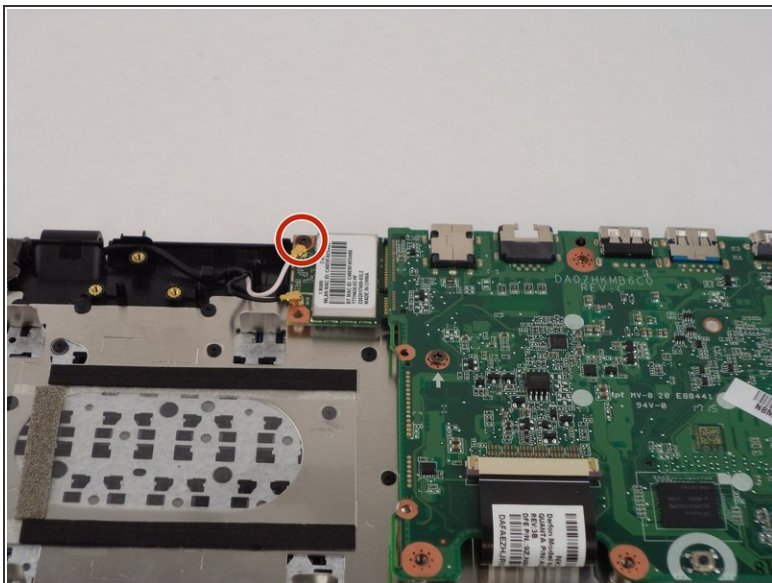
- Use two plastic opening tools to grip each side of the connector for the speaker cable and gently pull the cable from the motherboard.

Step 10



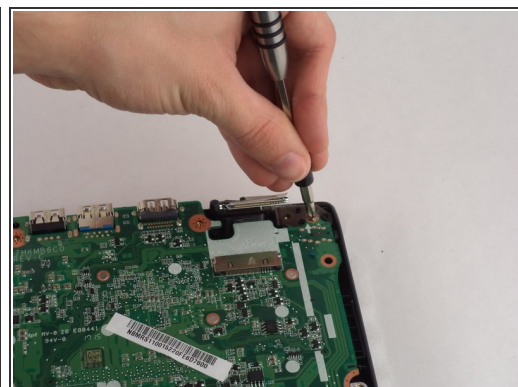
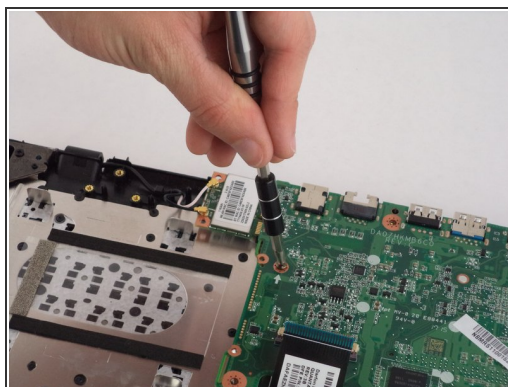
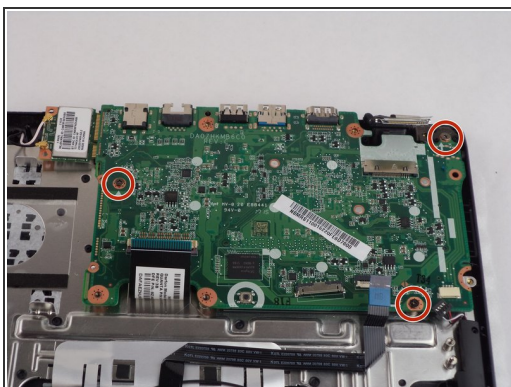
- Remove the tape on the connector for the display cable.
- Use two plastic opening tools to grip each side of the connector and gently pull the display cable from the motherboard.

Step 11



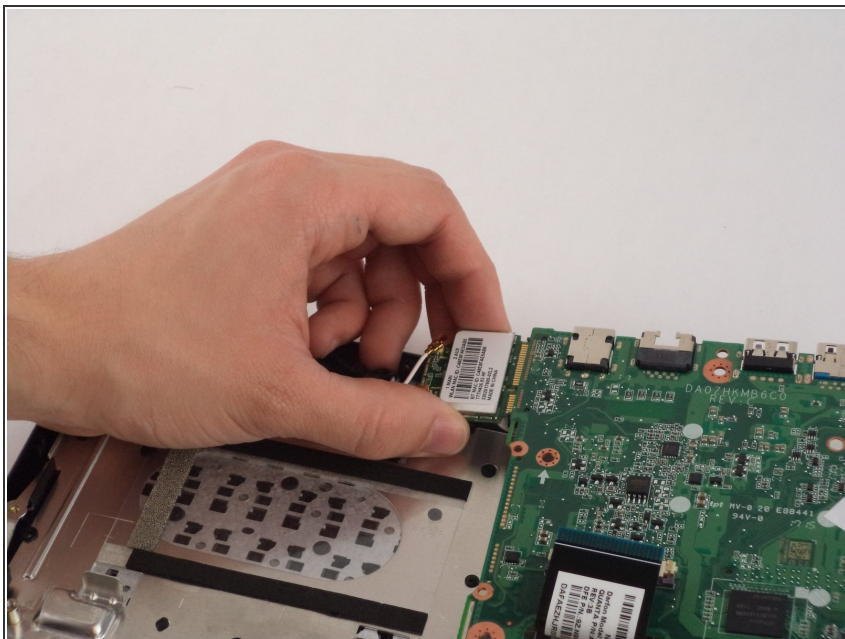
- Remove one 6.2 mm Phillips #1 screw from the wireless chip on the left side of the motherboard.

Step 12



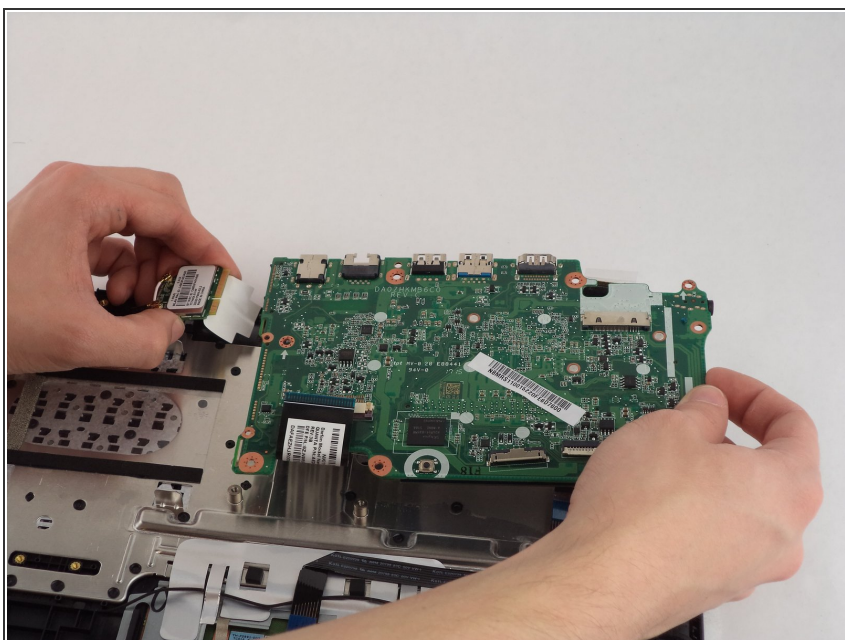
- Remove three 6.2 mm Phillips #1 screws that attach the motherboard to the laptop casing.

Step 13



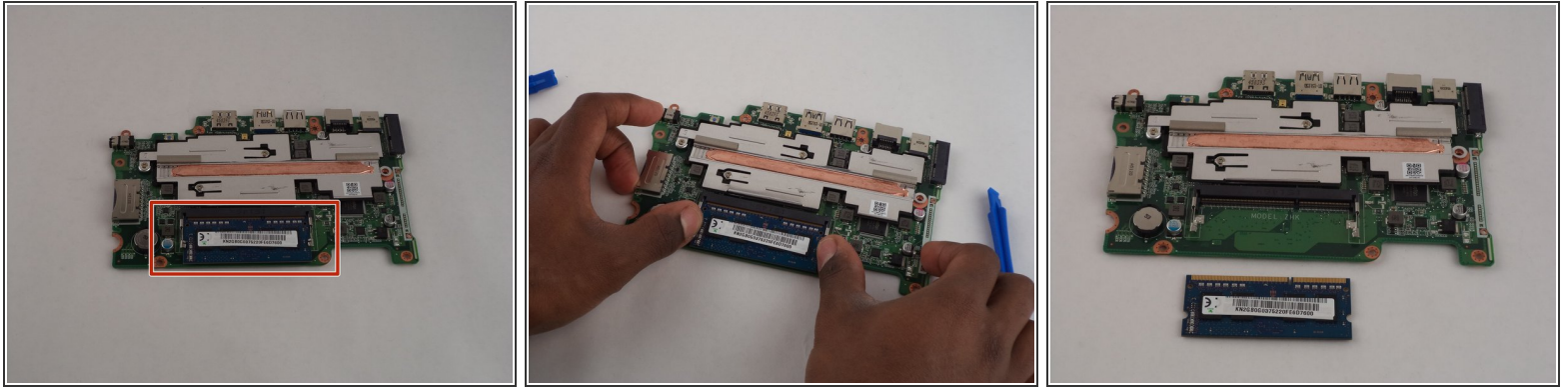
- Return to the wireless chip and gently pull it from the connector on the side of the motherboard.

Step 14



- The motherboard can now be lifted out from the laptop casing.

Step 15 — RAM



- Once the motherboard has been removed from the device, flip the motherboard over to reveal the RAM chip.
- Using your thumbs slide RAM card down and out of its slot.

To reassemble your device, follow these instructions in reverse order.