



Acer Aspire E1-510-2500 RAM Card Replacement

How to replace the RAM in the Acer Aspire E1-510-2500.

Written By: Sebastian Taylor



INTRODUCTION

The RAM card should be replaced if the computer has memory issues. This is sometimes the problem when the computer won't boot or is running too slowly.

TOOLS:

- [Spudger](#) (1)
 - [Phillips #1 Screwdriver](#) (1)
 - [iFixit Opening Tools](#) (1)
-

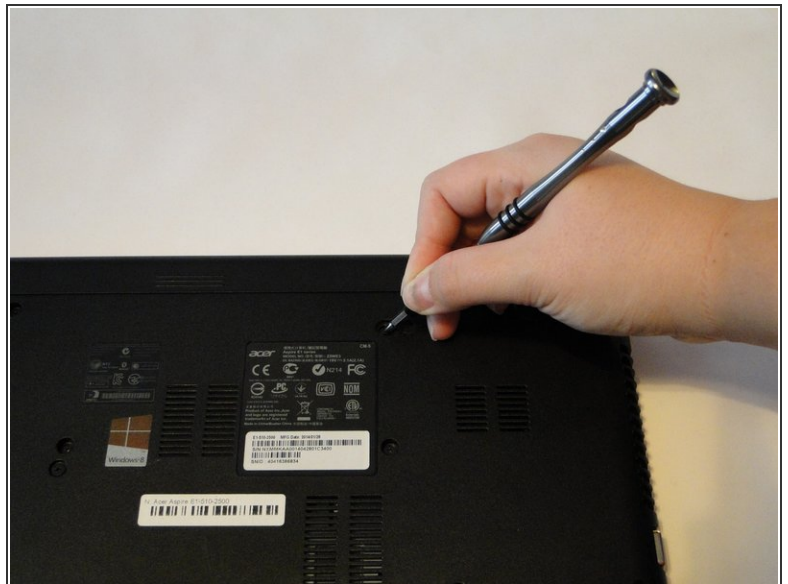
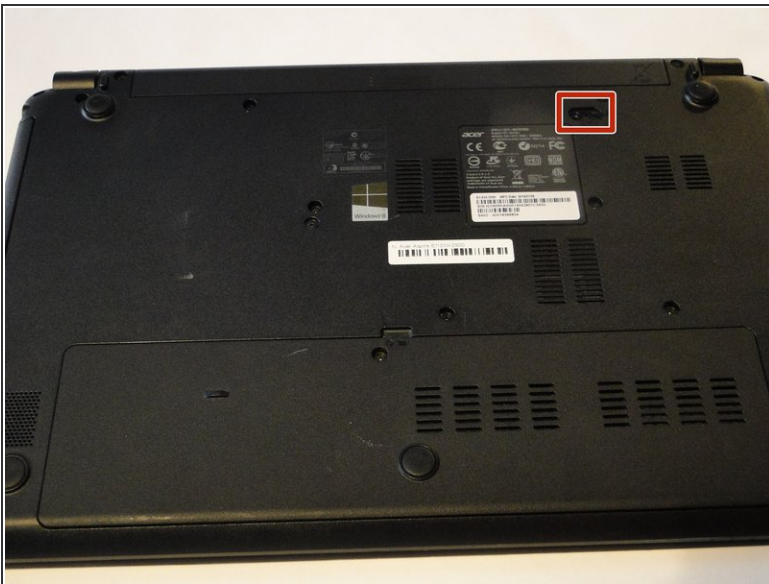
Step 1 — Battery



⚠ Ensure that your laptop is completely switched off, and disconnected from the power source.

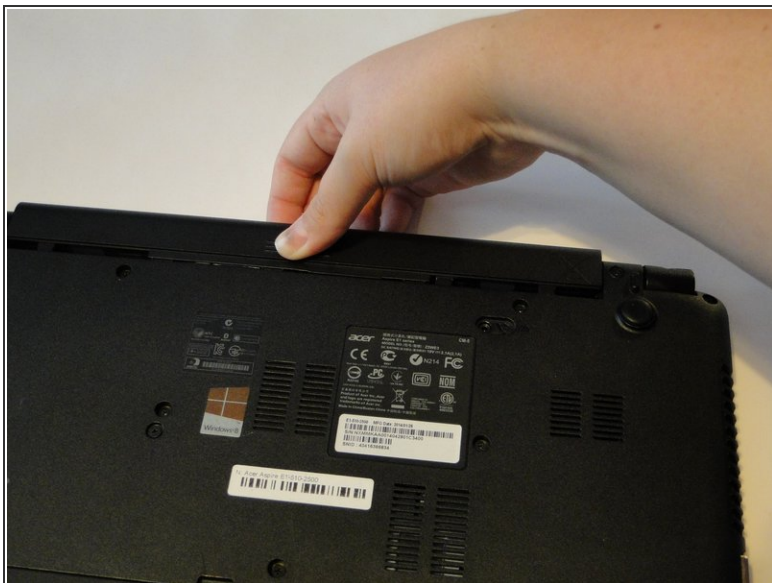
- Flip the laptop so that the base of the laptop is facing up.

Step 2



- Insert a spudger into the battery release latch.
- Slide the battery release latch to the right, this will eject the battery for safe removal.

Step 3



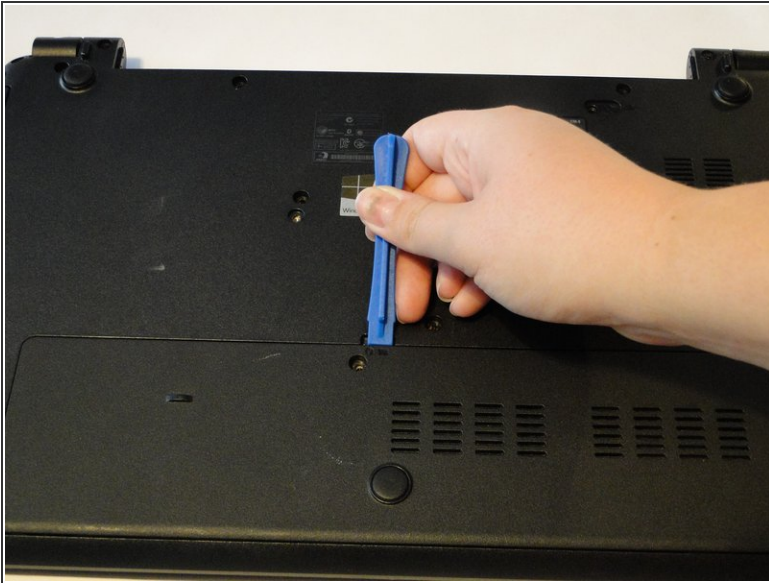
- Carefully slide the battery out of the battery's home.

Step 4 — RAM Card



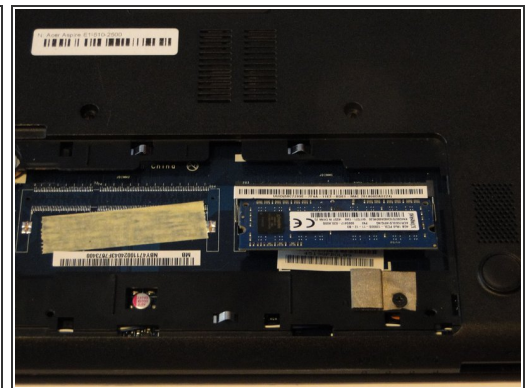
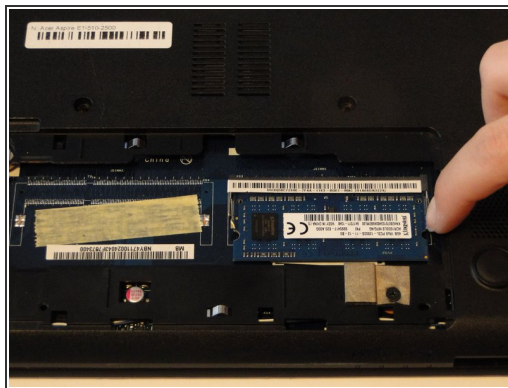
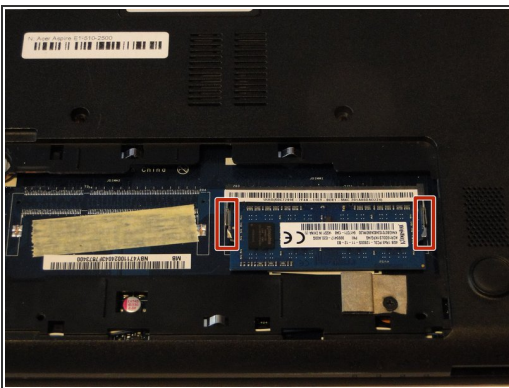
- Using a Phillips 1 screwdriver, remove the 9 mm screw which secures the back panel.

Step 5



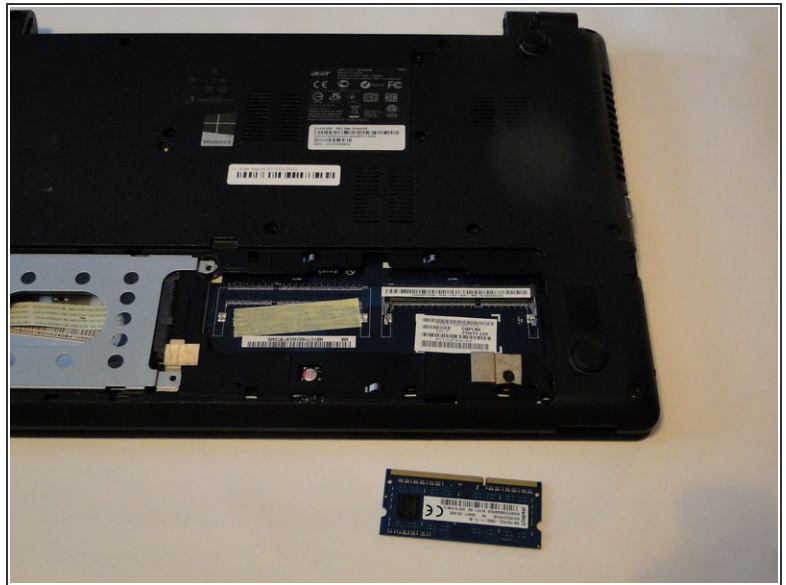
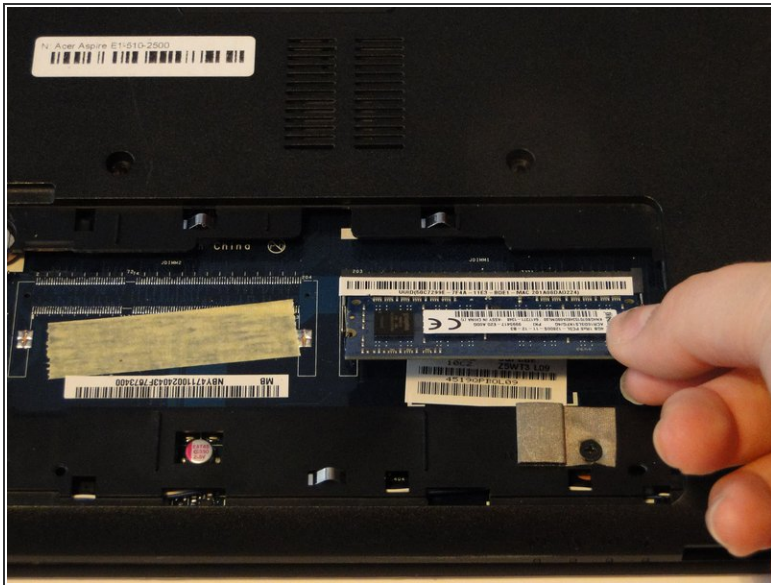
- Use a plastic opening tool to carefully pry the back panel from its home.
- ☑ When reassembling, insert the panel from the edge opposite the screw first.

Step 6



- Locate the tabs on either side of the RAM card.
- Push out on both tabs simultaneously to release the RAM card.
 - The RAM card should raise slightly at the unattached edge.

Step 7



- Carefully remove the RAM card from its home.

To reassemble your device, follow these instructions in reverse order.