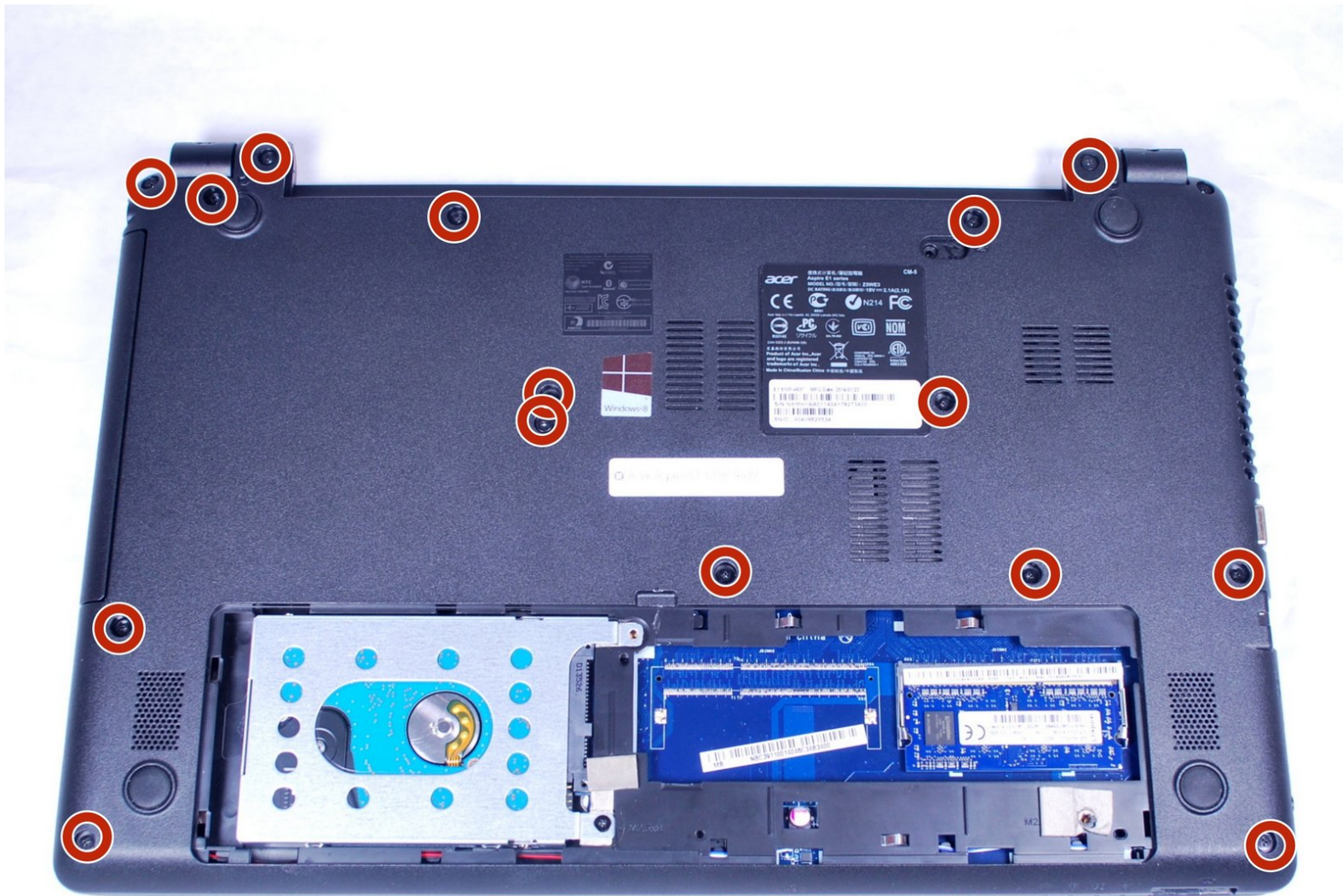




# Acer Aspire E1-510P-4637 Keyboard Replacement

This guide will go through the steps required to remove and replace the laptop's keyboard.

Written By: Caleb lindsay





## TOOLS:

- [Spudger](#) (1)
- [Phillips #1 Screwdriver](#) (1)
- [Phillips #0 Screwdriver](#) (1)

## Step 1 — Battery



- To release the battery, depress the battery release with a nylon spudger. Hold the latch down and slide it over.

## Step 2



- Firmly grab hold of the battery and slide it out of the laptop.

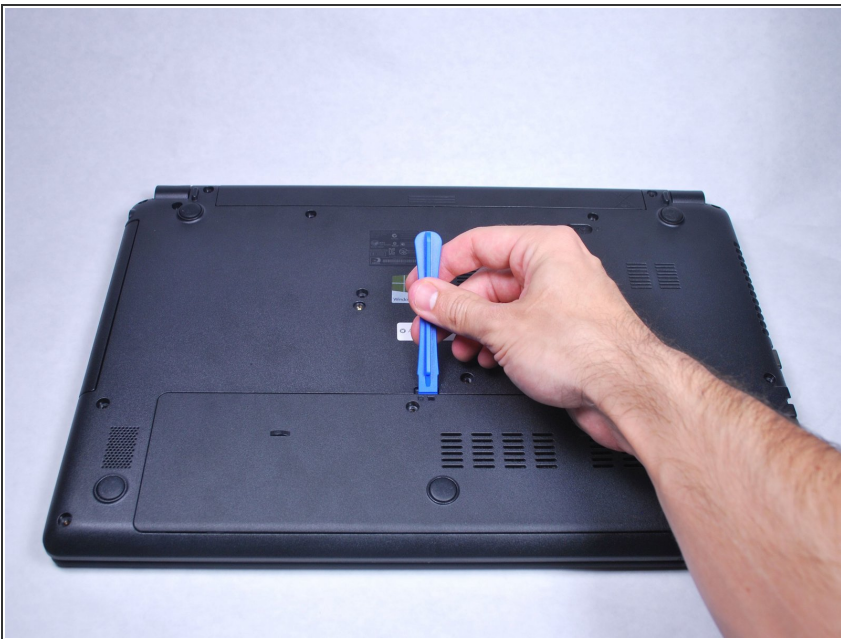


### Step 3 — Hard Drive



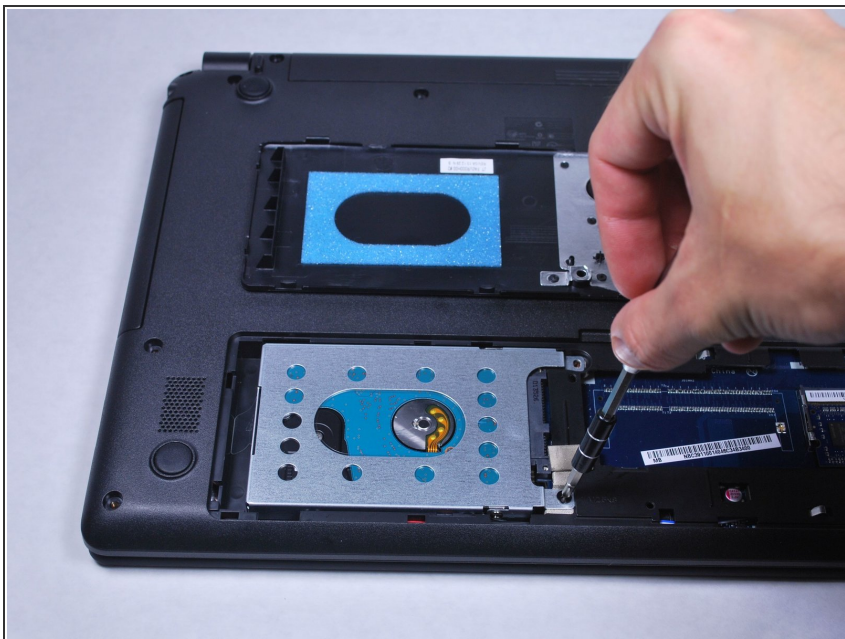
- Remove the M2.5x8 screw with a PH1 screwdriver.

### Step 4



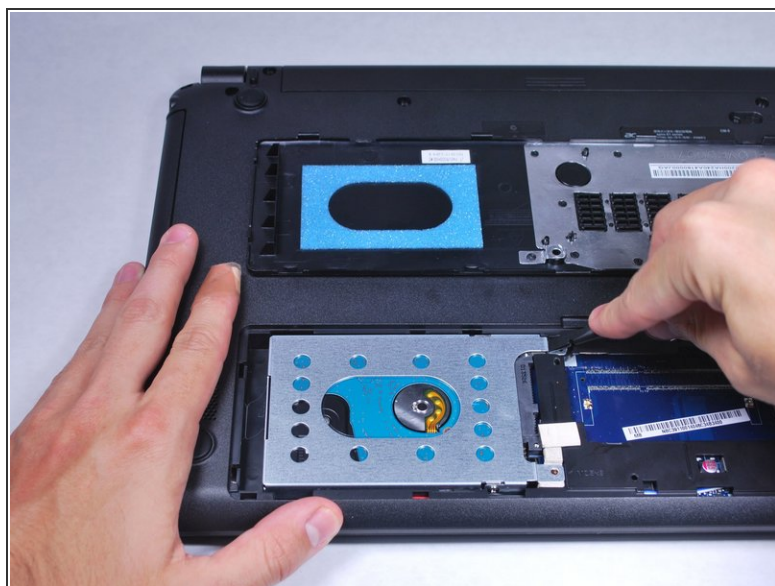
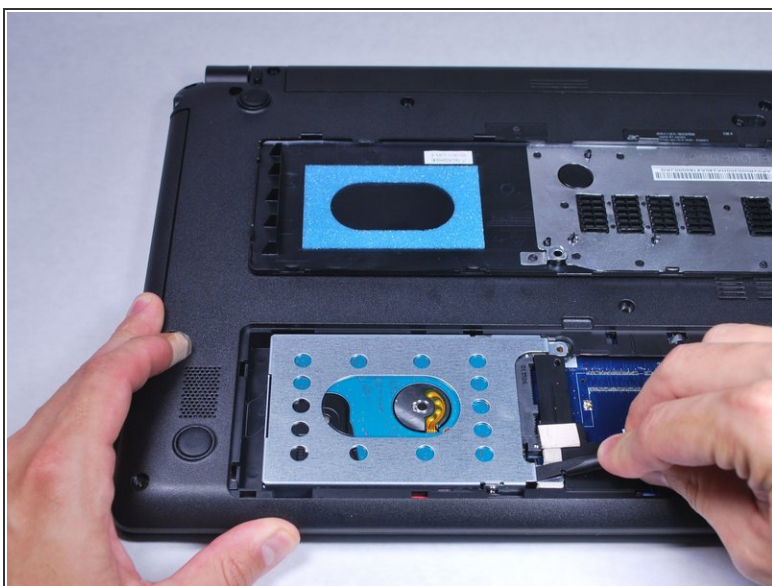
- Use the plastic opening tool to pop off the small back cover.

## Step 5



- Use a PH0 Phillips screwdriver to remove the screw securing the hard drive.

## Step 6



- Use a nylon spudger to slightly pry up the hard drive near the screw holes.



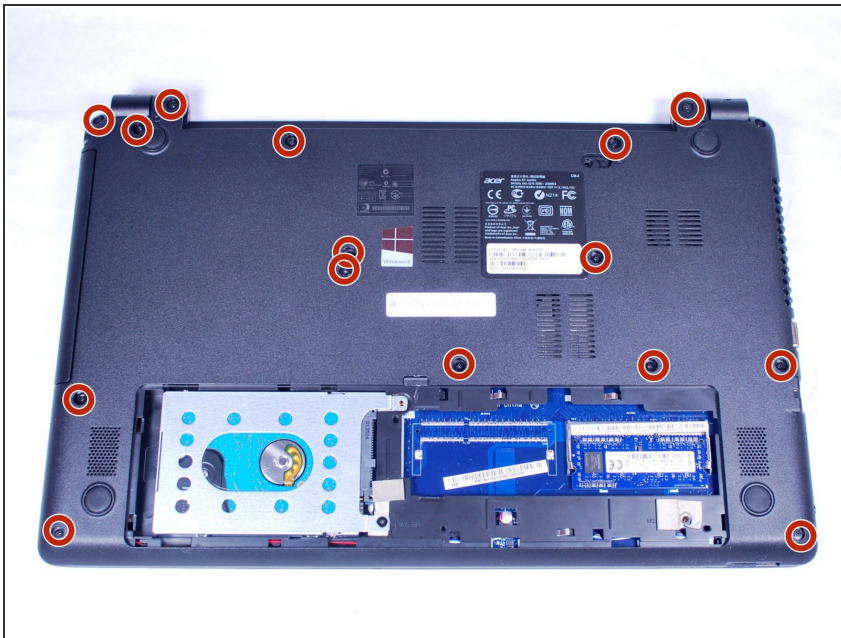
## Step 7



- Grab hold of the plastic tab and pull the hard drive away from the connectors. This will release the hard drive.

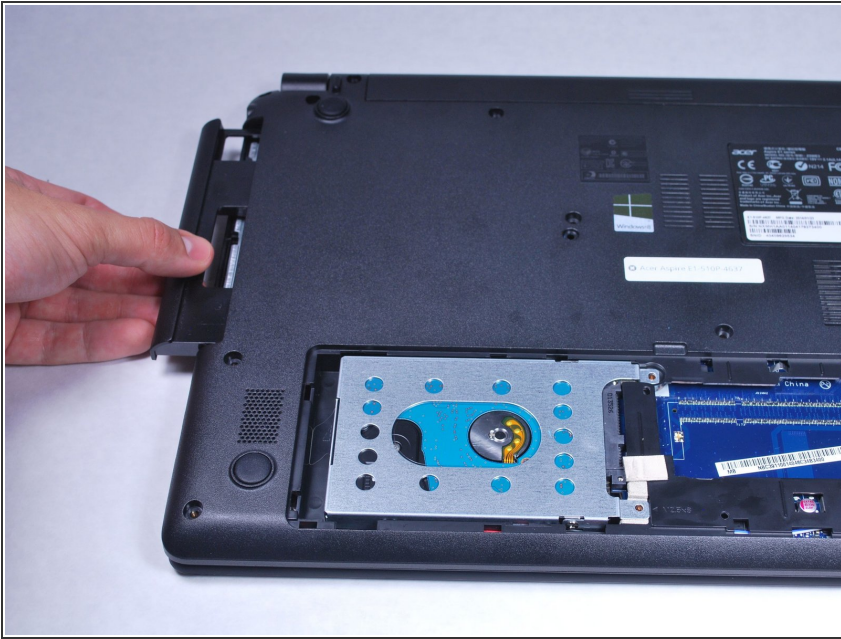
⚠ The hard drive connector is fragile. Handle with care.

## Step 8 — Keyboard



- Remove the fourteen M2.5x8 screws highlighted in the picture with a PH0 Phillips screwdriver.

## Step 9



- Slide out the disk drive tray.

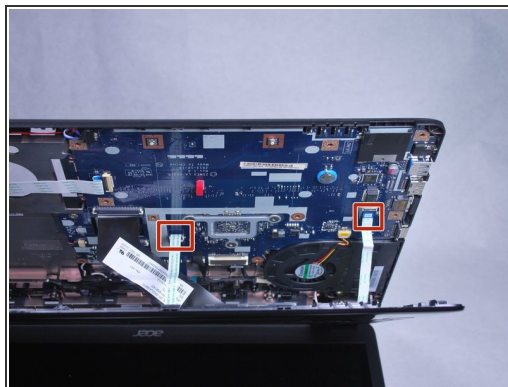
## Step 10



- Use the plastic opening tool to gently pry open the laptop.

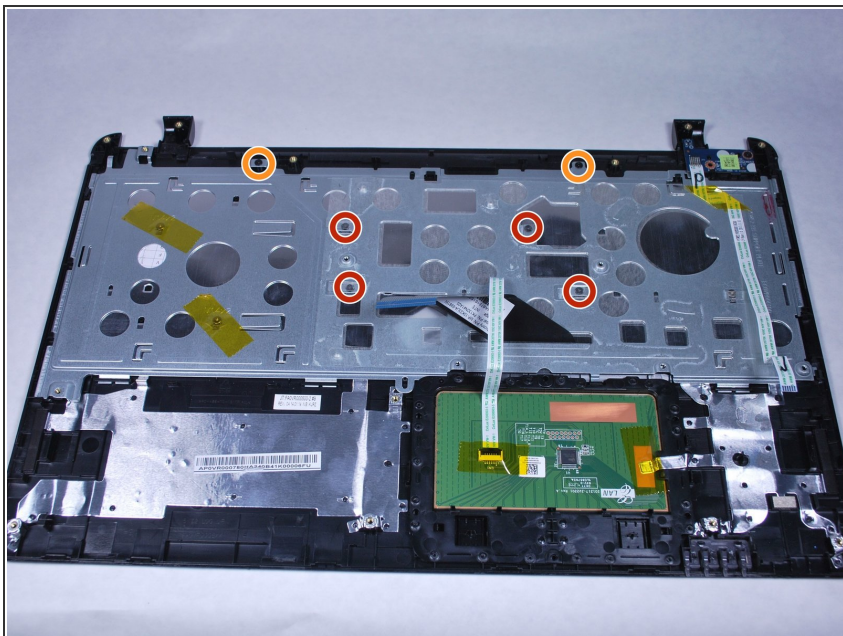


## Step 11



- Rotate the back cover up a little to reveal the cables connected to the motherboard.
- Unplug the cables by sliding them out of their receptacle.
- ⚠ The connectors are very small and fragile. Handle with care.

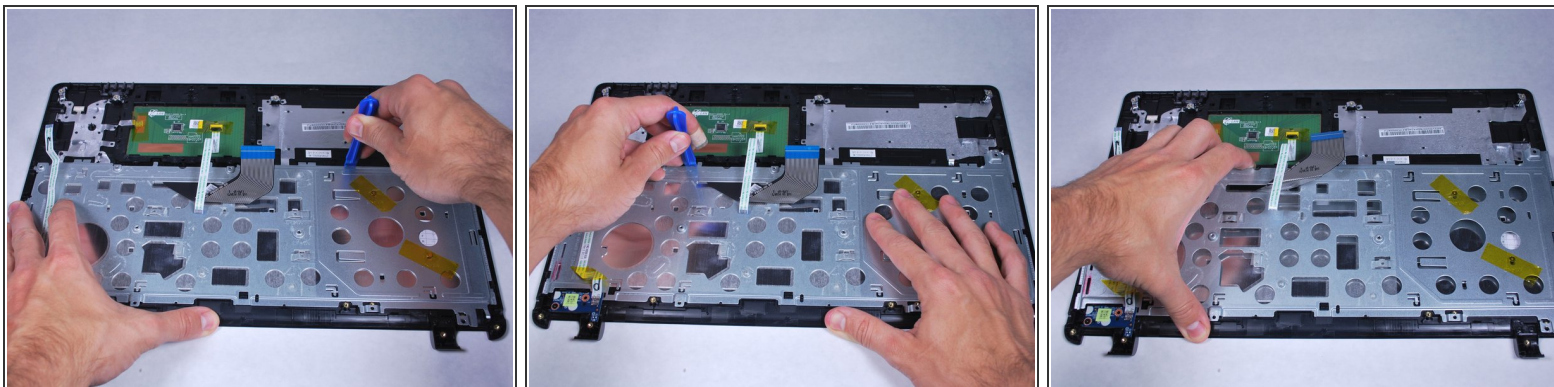
## Step 12



- Remove the four center panel M1.6x3 screws with a PH0 Phillips screwdriver.
- Remove the two M2x3 screws with a PH0 Phillips screwdriver.

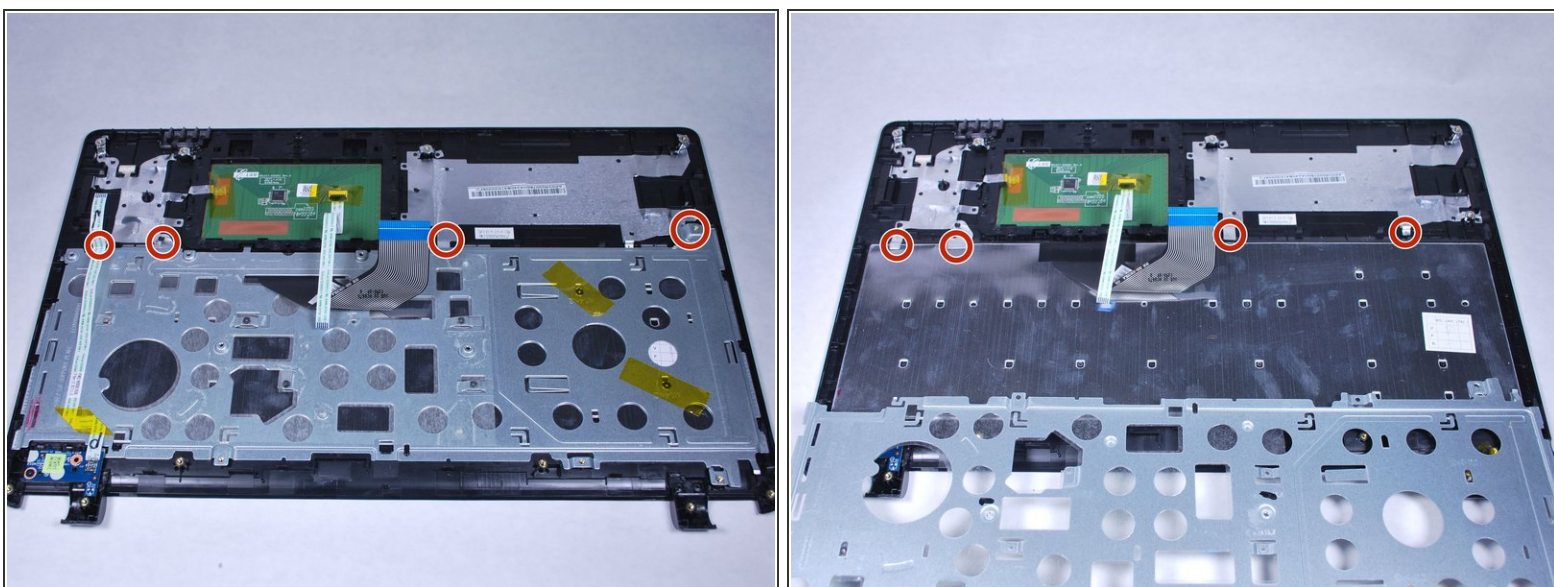


## Step 13



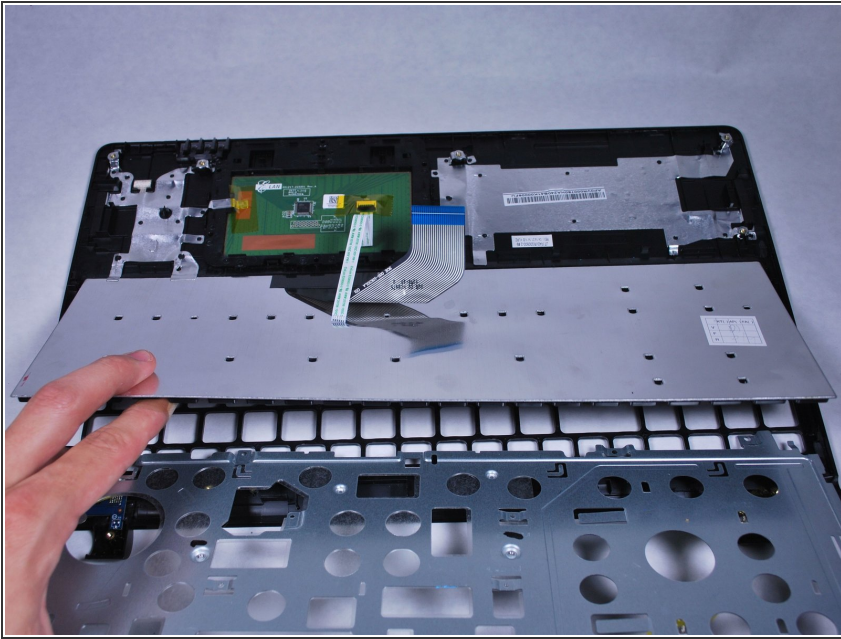
- Use the plastic opening tool to slide the metal part out to release it from the retaining tabs.

## Step 14



- Peel off the foil adhesive stuck to the keyboard.

## Step 15



- Remove the keyboard.

To reassemble your device, follow these instructions in reverse order.