



Acer Aspire E1-531 Wi-Fi Wireless Card Replacement

Replace the wireless card in your Acer Aspire E1-531.

Written By: Sarah Brito



INTRODUCTION

In this guide, we will be replacing the Wi-Fi wireless card for the Acer Aspire E1-531 laptop computer.



TOOLS:

- [Spudger](#) (1)
 - [iFixit Opening Tools](#) (1)
-

Step 1 — Wi-Fi Wireless Card



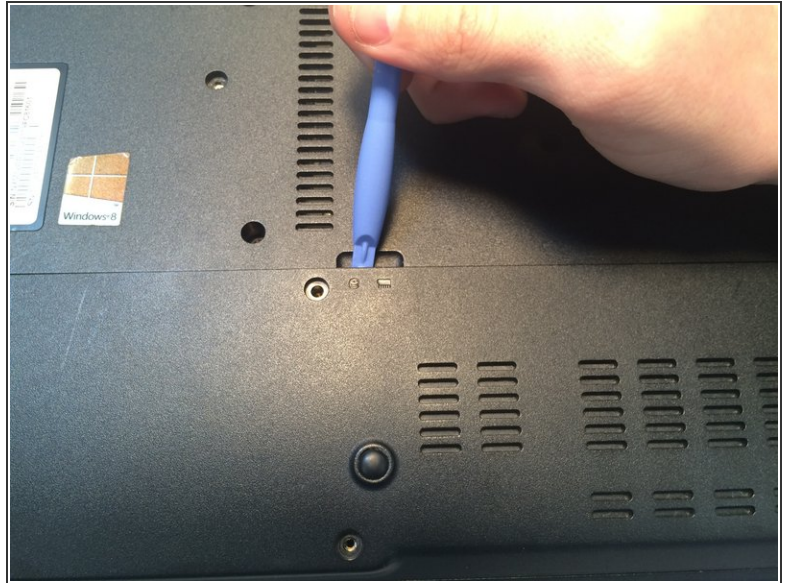
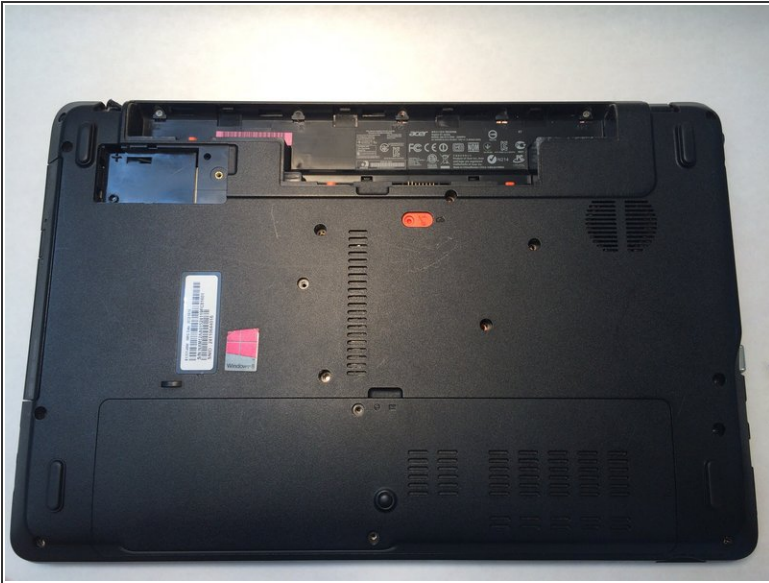
- Flip your computer over and examine the back. Look for a bright orange switch, as shown in the pictures to the left.
- Take the spudger and press against the orange switch and start pushing the button to the left until it releases the battery.

Step 2



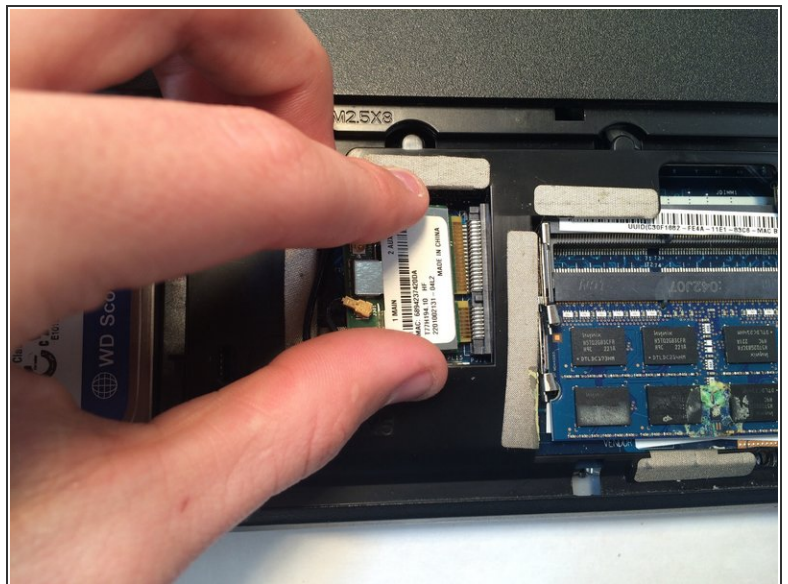
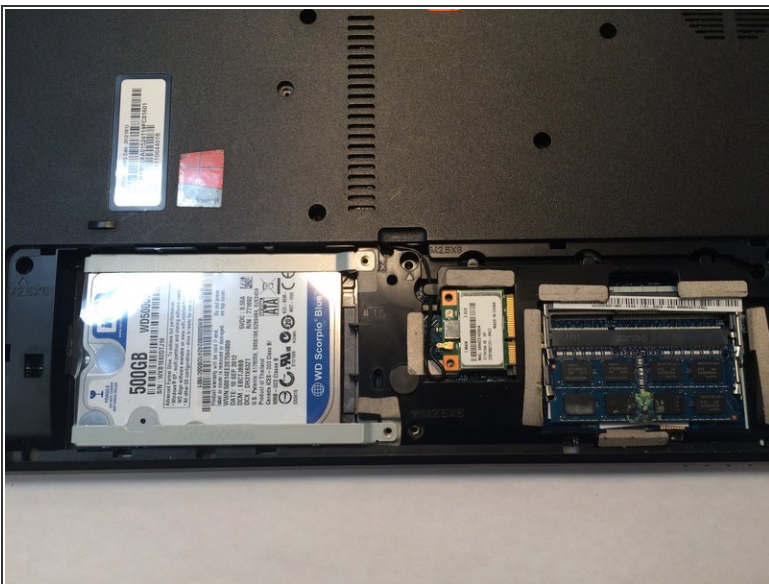
- Take out the battery completely.

Step 3



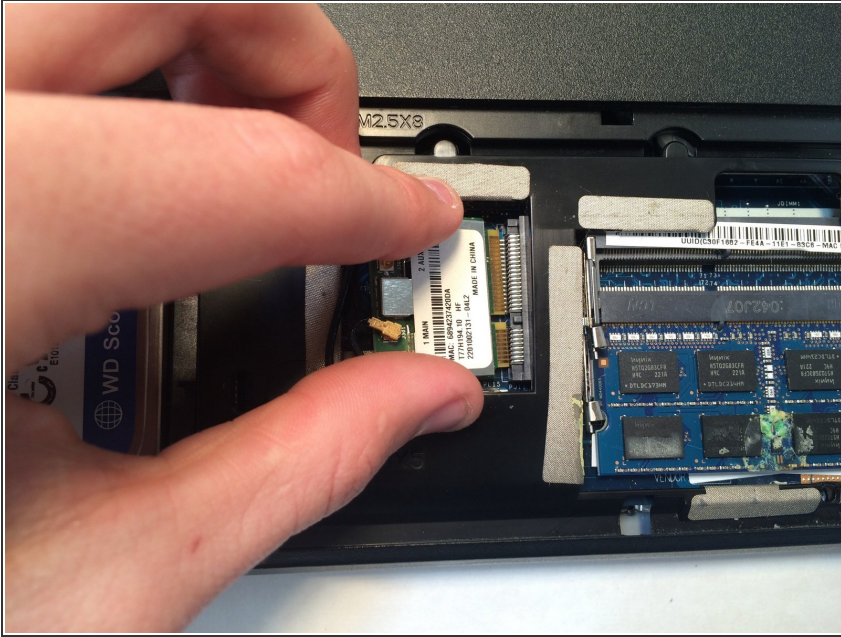
- Use the appropriate screw driver and remove screws to take off the back.
- Take the opening tool and begin to pry open the back of the bottom cover like in Picture 2.

Step 4



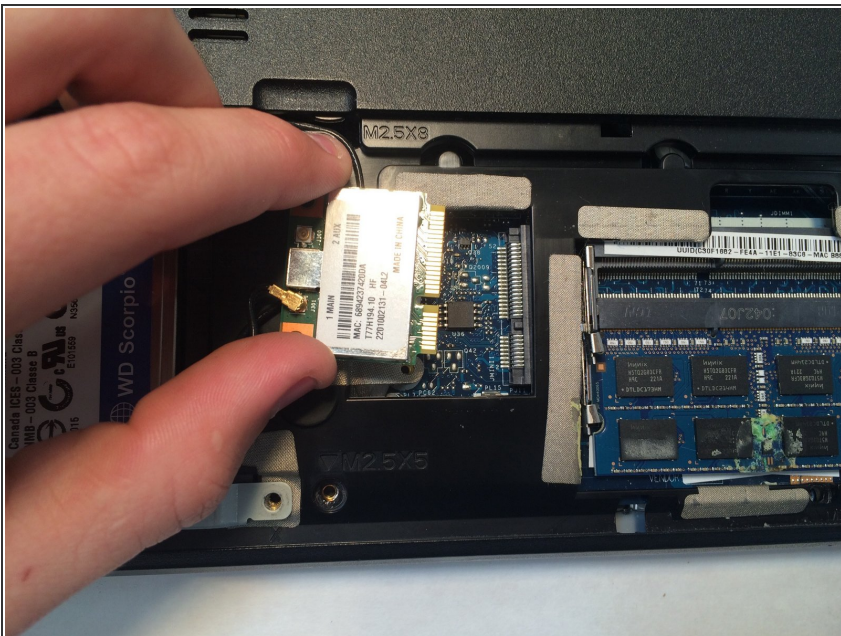
- Once the back is off, the inside of the computer should be revealed, like the picture shown.
- Identify the Wi-Fi wireless card.

Step 5



- Grab the Wi-Fi card to "wiggle" it out of place.
- Wiggle it out of place until the card is completely detached from the computer.

Step 6



- Detach the connector from the computer to completely detach the Wi-Fi wireless card.
- Once detached, take the new wireless card and follow these instructions in the reverse order.

To reassemble your device, follow these instructions in reverse order.