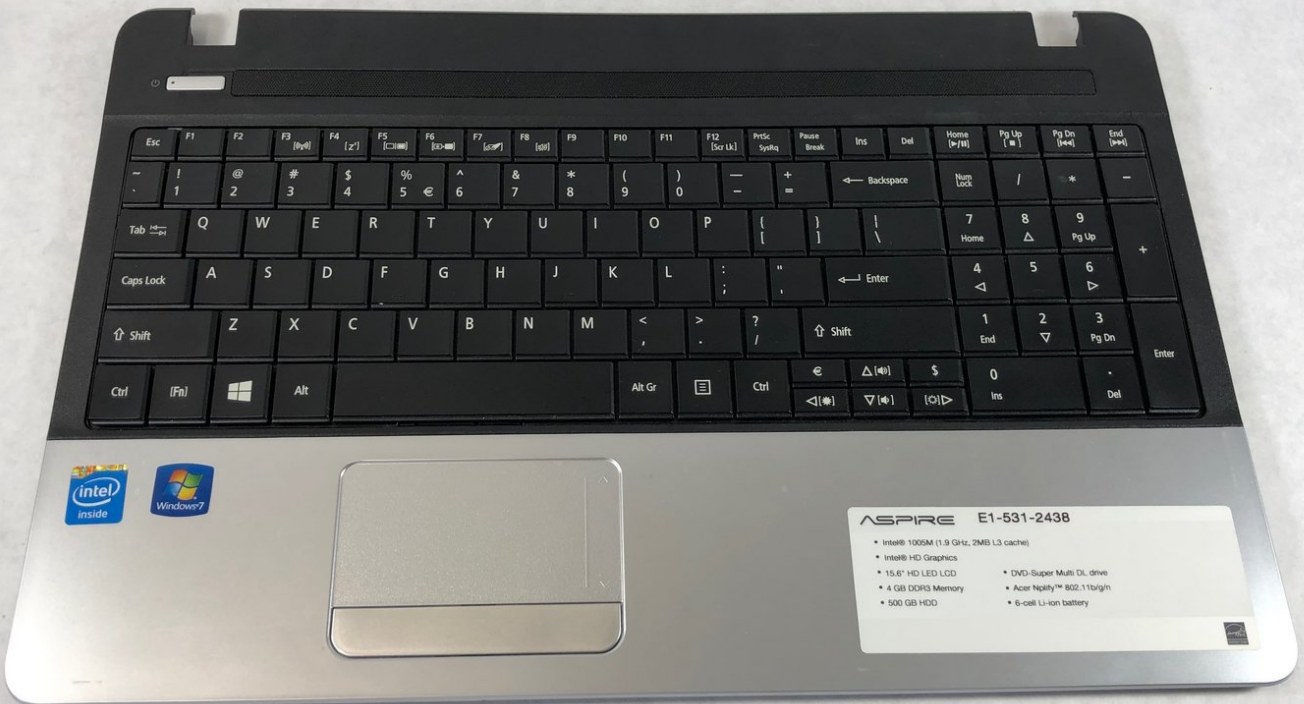




Acer Aspire E1-531-2438 Keyboard Replacement

This guide shows how to remove the keyboard on an Acer Aspire E1-531-2438.

Written By: Jakob Rinkus



INTRODUCTION

Keyboard mistyping, keys not working, or keys jammed? This guide shows how to remove the keyboard on an Acer Aspire E1-531-2438.

TOOLS:

- [Heavy-Duty Spudger](#) (1)
 - [Phillips #0 Screwdriver](#) (1)
-

Step 1 — Battery



 Unplug and power down the device before removing the battery.

- Turn the device over so the back side is facing up.
- Using a spudger, slide the orange latch to the right. This will release the battery, which should pop up from the device.
- Use two hands tilt the side of the battery closest to the orange latch upward as shown in the images.

Step 2



- Tilt the side of the battery closest to the orange latch upward.
- Lift the battery up and out of the device.

Step 3 — Hard Drive



- Using a Phillips #0 screwdriver, remove the two 9mm screws on the access panel.

Step 4



- Using the indentation, pry open the access panel with your fingers or a spudger.
- Remove the access panel to expose the hard drive, WiFi chip, and RAM modules.

Step 5



- Grip the plastic tab on the hard drive, then pull to the left to unplug the drive from its socket.
- Once free from the socket, lift the hard drive up and out of the device.

Step 6 — Keyboard



- Using a Phillips #0 screwdriver, remove all of the following screws:

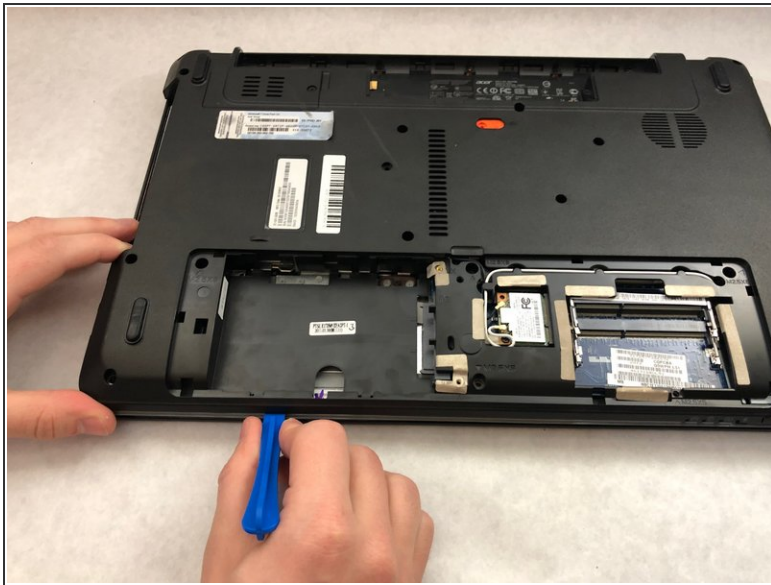
- Fifteen 9mm screws
- One 6mm screw
- Three 3.5mm screws

Step 7



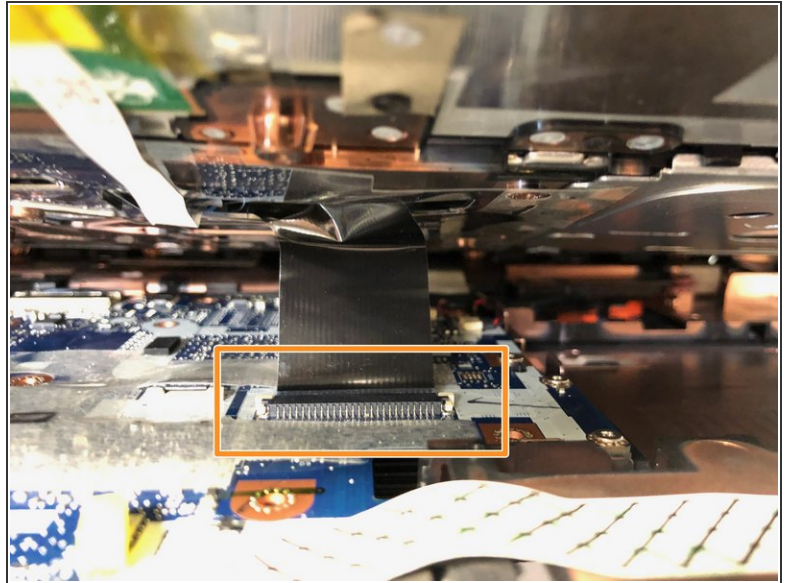
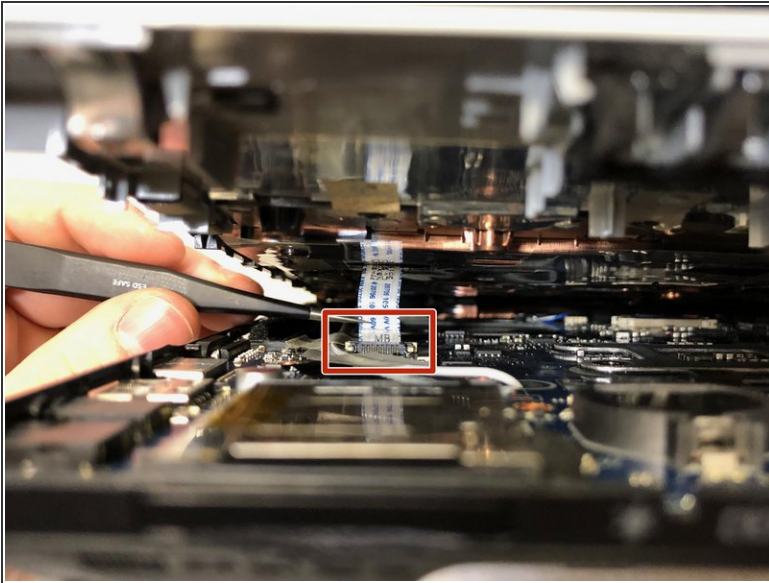
- Remove the optical drive by sliding it out of its slot on the side of the laptop.

Step 8



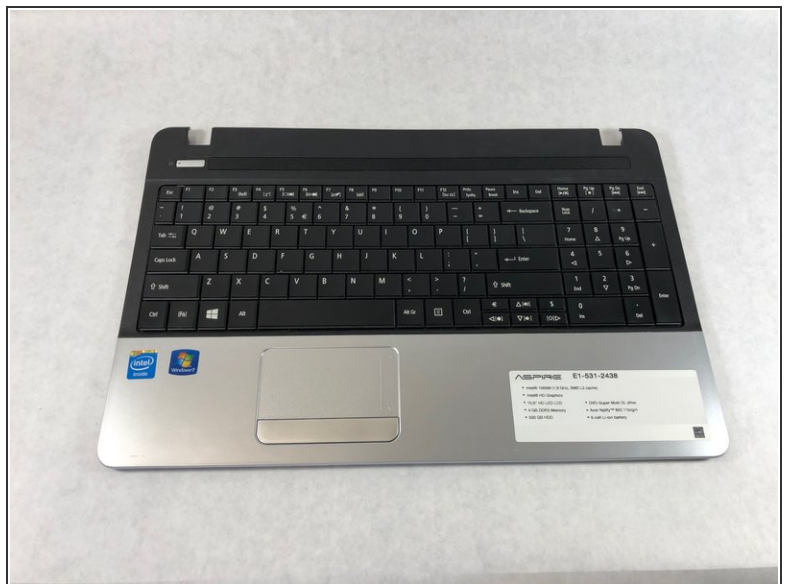
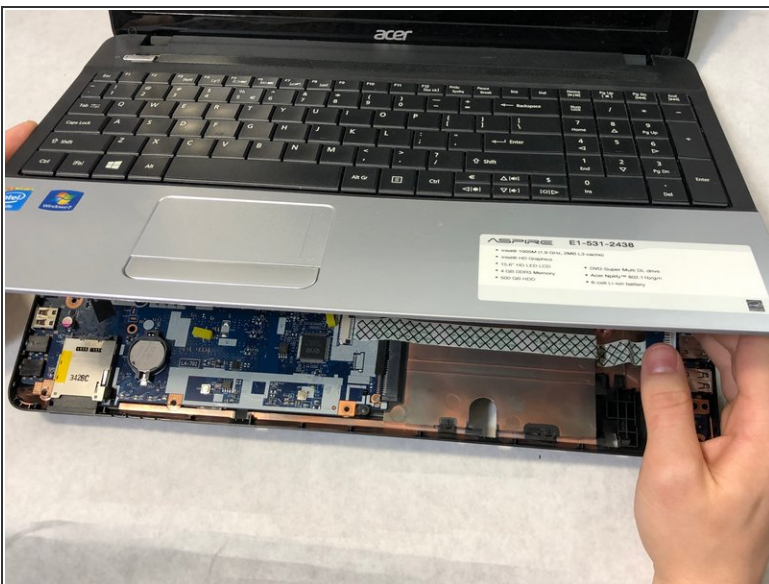
- Using a plastic opening tool, pry along the seam running the perimeter of the laptop to separate the bottom case from the palmrest assembly.
- Flip the device over and open the laptop so that the keyboard is visible.
- Lift up the palmrest assembly just far enough to access the connectors underneath.

Step 9



- Using a pair of tweezers, disconnect the small white ribbon cable from the connector near the left side of the device.
- Disconnect the large black ribbon cable near the middle of the device. Gently pull on the cable away from you.

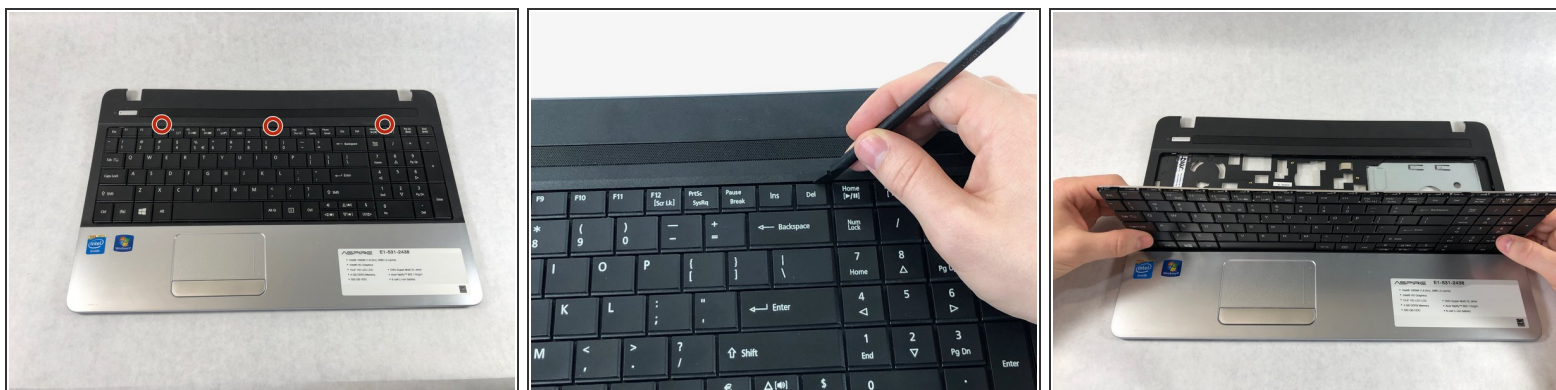
Step 10



- Lift and remove the palmrest assembly and the attached keyboard.

This document was generated on 2019-12-10 07:41:54 AM (MST).

Step 11



- Using a spudger, release the keyboard by prying at the indicated points.
- Remove the keyboard from the palmrest assembly.

To reassemble your device, follow these instructions in reverse order.