



# Acer Aspire E1-531-2438 Screen Replacement

This guide will guide you on how to replace the screen on an Acer Aspire E1-531-2438.

Written By: Jakob Rinkus



## INTRODUCTION

Screen dim, has lines across it, dead pixels. This guide will guide you on how to replace the screen on an Acer Aspire E1-531-2438.



### TOOLS:

- [Spudger](#) (1)
  - [Phillips #0 Screwdriver](#) (1)
-

## Step 1 — Battery



 Unplug and power down the device before removing the battery.

- Turn the device over so the back side is facing up.
- Using a spudger, slide the orange latch to the right. This will release the battery, which should pop up from the device.
- Use two hands tilt the side of the battery closest to the orange latch upward as shown in the images.

## Step 2



- Tilt the side of the battery closest to the orange latch upward.
- Lift the battery up and out of the device.

## Step 3 — Hard Drive



- Using a Phillips #0 screwdriver, remove the two 9mm screws on the access panel.



## Step 4



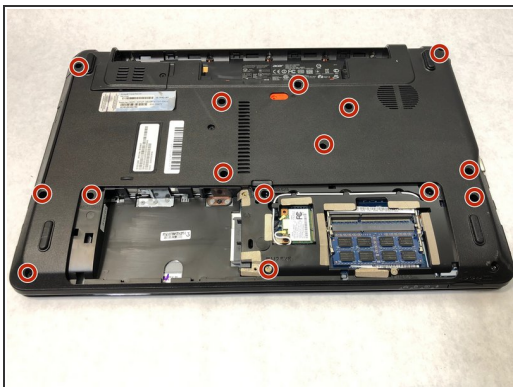
- Using the indentation, pry open the access panel with your fingers or a spudger.
- Remove the access panel to expose the hard drive, WiFi chip, and RAM modules.

## Step 5



- Grip the plastic tab on the hard drive, then pull to the left to unplug the drive from its socket.
- Once free from the socket, lift the hard drive up and out of the device.

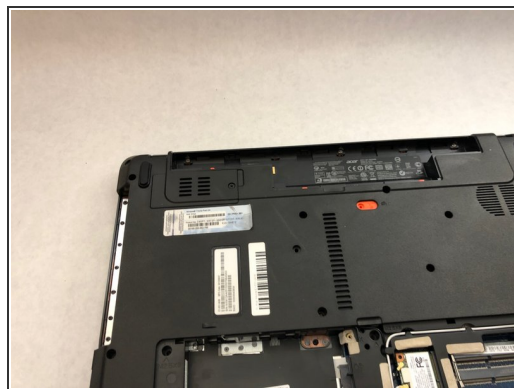
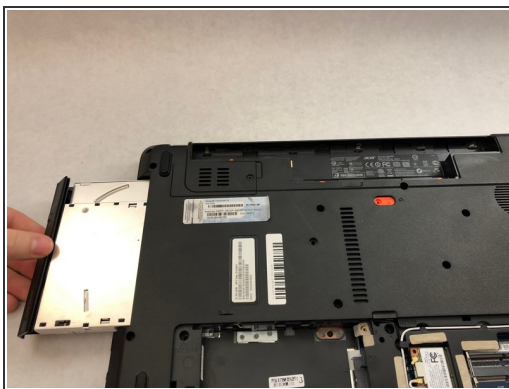
## Step 6 — Screen



- Using a Phillips #0 screwdriver, remove all of the following screws:

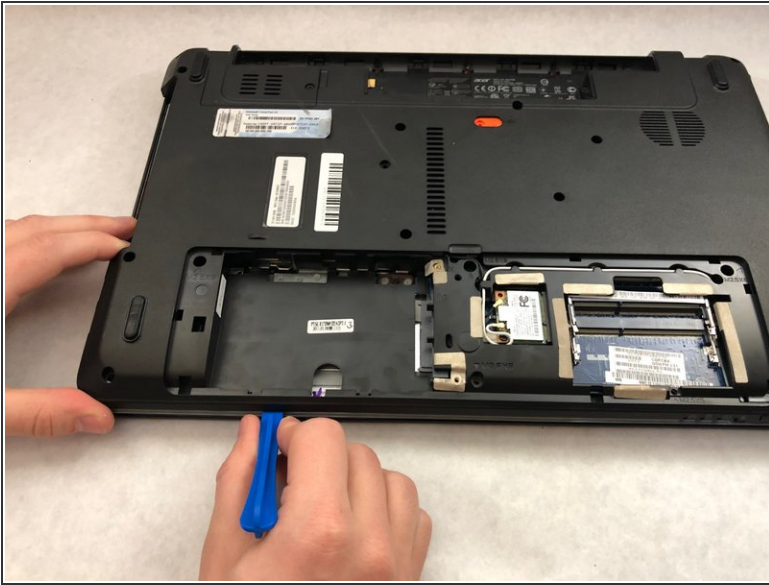
- Fifteen 9mm screws
- One 6mm screw
- Three 3.5mm screws

## Step 7



- Remove the optical drive by sliding it out of its slot on the side of the laptop.

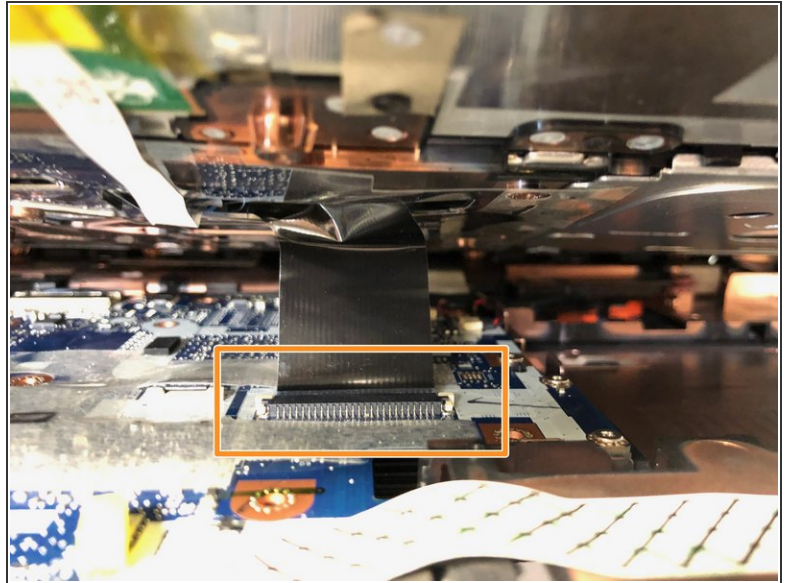
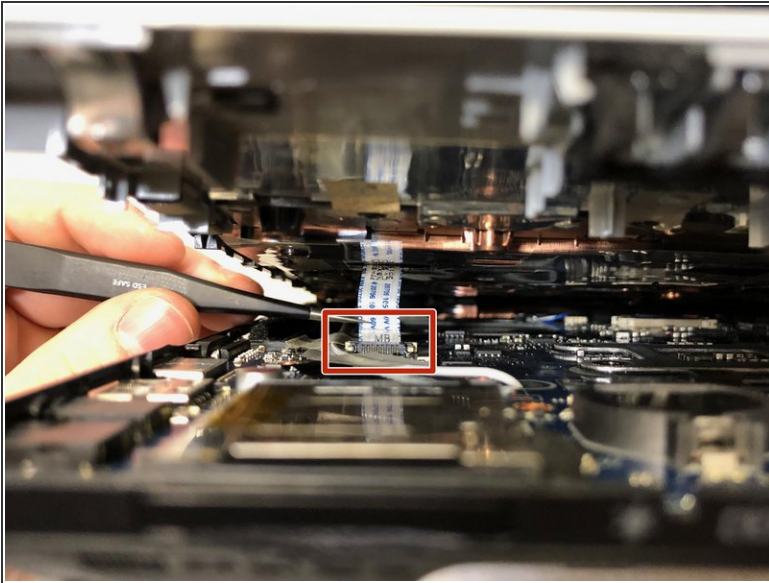
## Step 8



- Using a plastic opening tool, pry along the seam running the perimeter of the laptop to separate the bottom case from the palmrest assembly.
- Flip the device over and open the laptop so that the keyboard is visible.
- Lift up the palmrest assembly just far enough to access the connectors underneath.

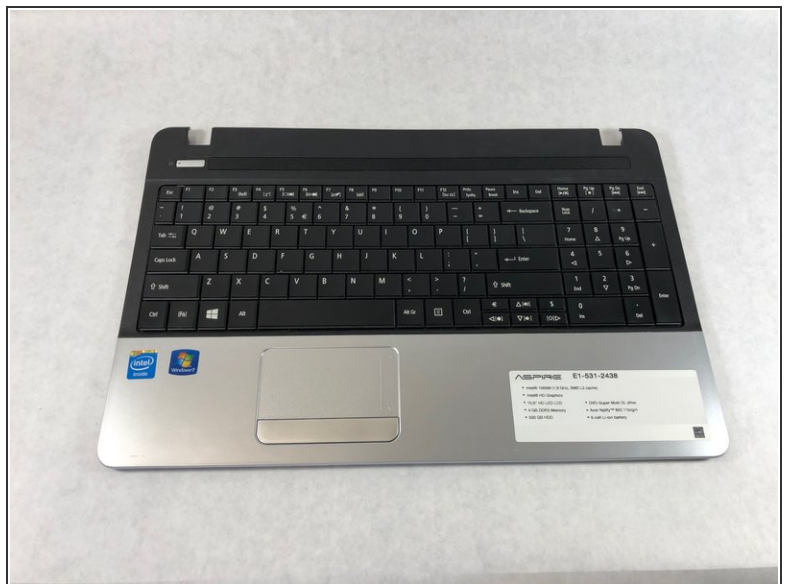
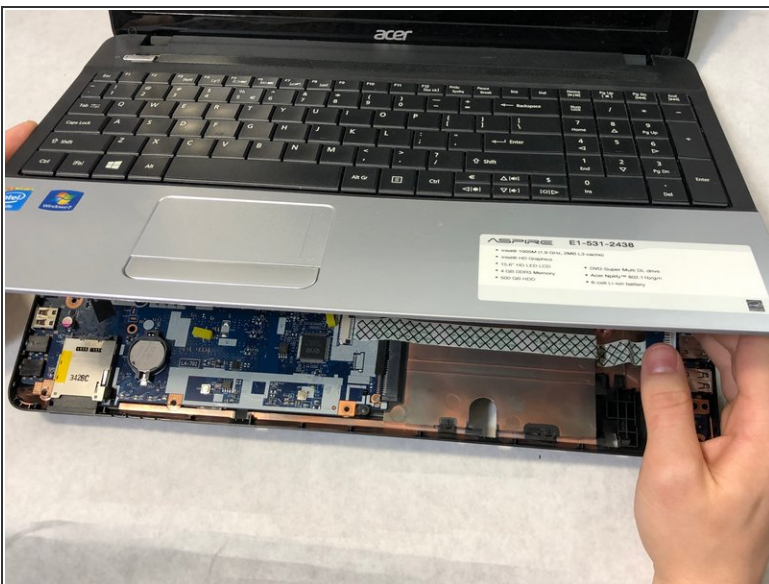


## Step 9



- Using a pair of tweezers, disconnect the small white ribbon cable from the connector near the left side of the device.
- Disconnect the large black ribbon cable near the middle of the device. Gently pull on the cable away from you.

## Step 10

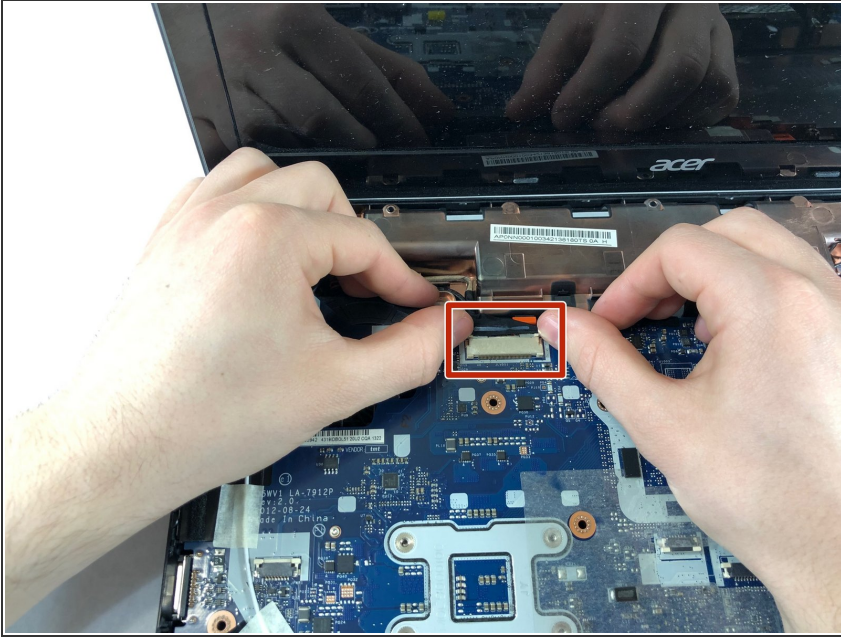


- Lift and remove the palmrest assembly and the attached keyboard.

This document was generated on 2020-01-19 08:38:49 PM (MST).



## Step 11



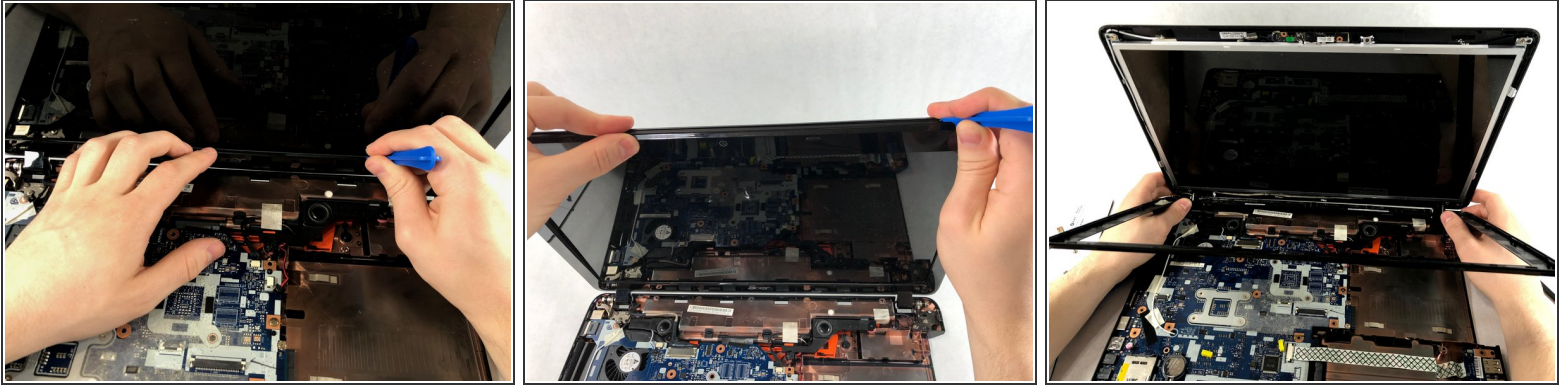
- Using two hands, push toward the screen to disconnect the screen connector.

## Step 12



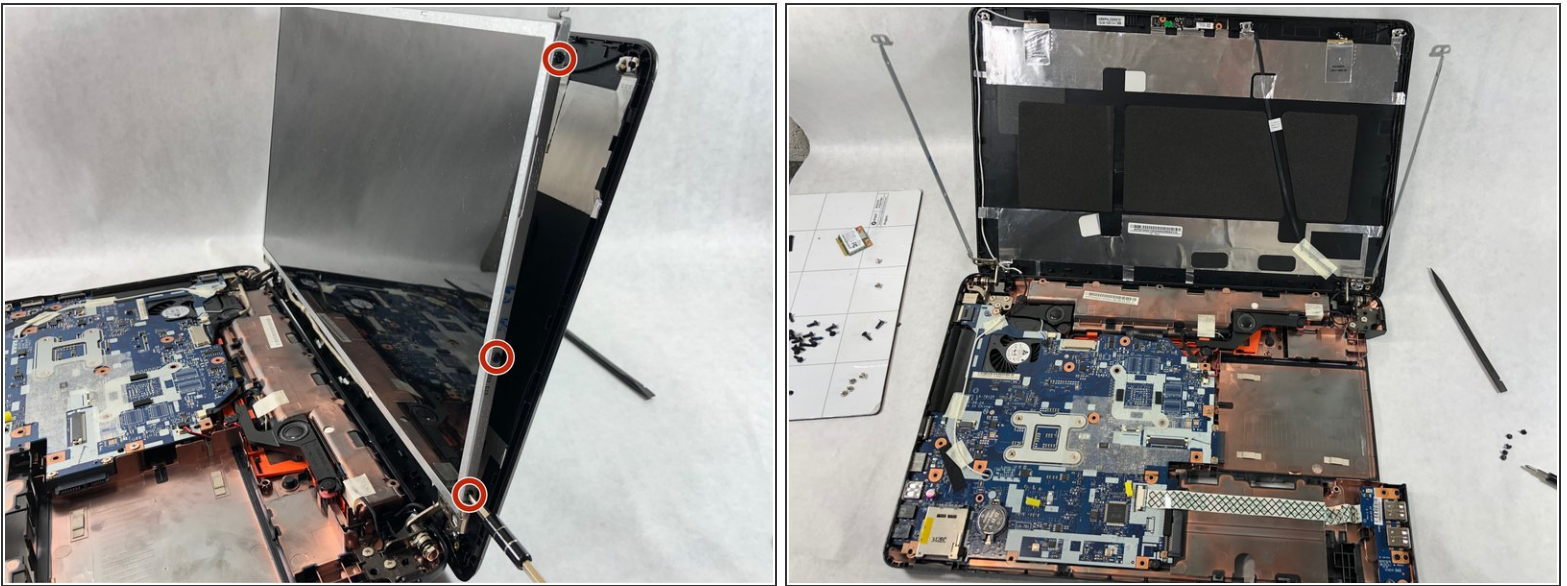
- Using a spudger, remove the circular plastic screw cover on the screws on the lower left and right of the screen.
- Using a Phillips #0 screwdriver, remove the two 3mm screws hidden under the circular plastic screw covers.

## Step 13



- Using a plastic opening tool, go around the edge of the display to remove the plastic bezel.

## Step 14



- Using a Phillips #0 screwdriver, remove the three screws in the mounting bracket along the right edge of the screen.
- Remove the three screws in the mounting bracket along the left edge of the screen in the same manner.
- Lift the screen out of the device.

To reassemble your device, follow these instructions in reverse order.