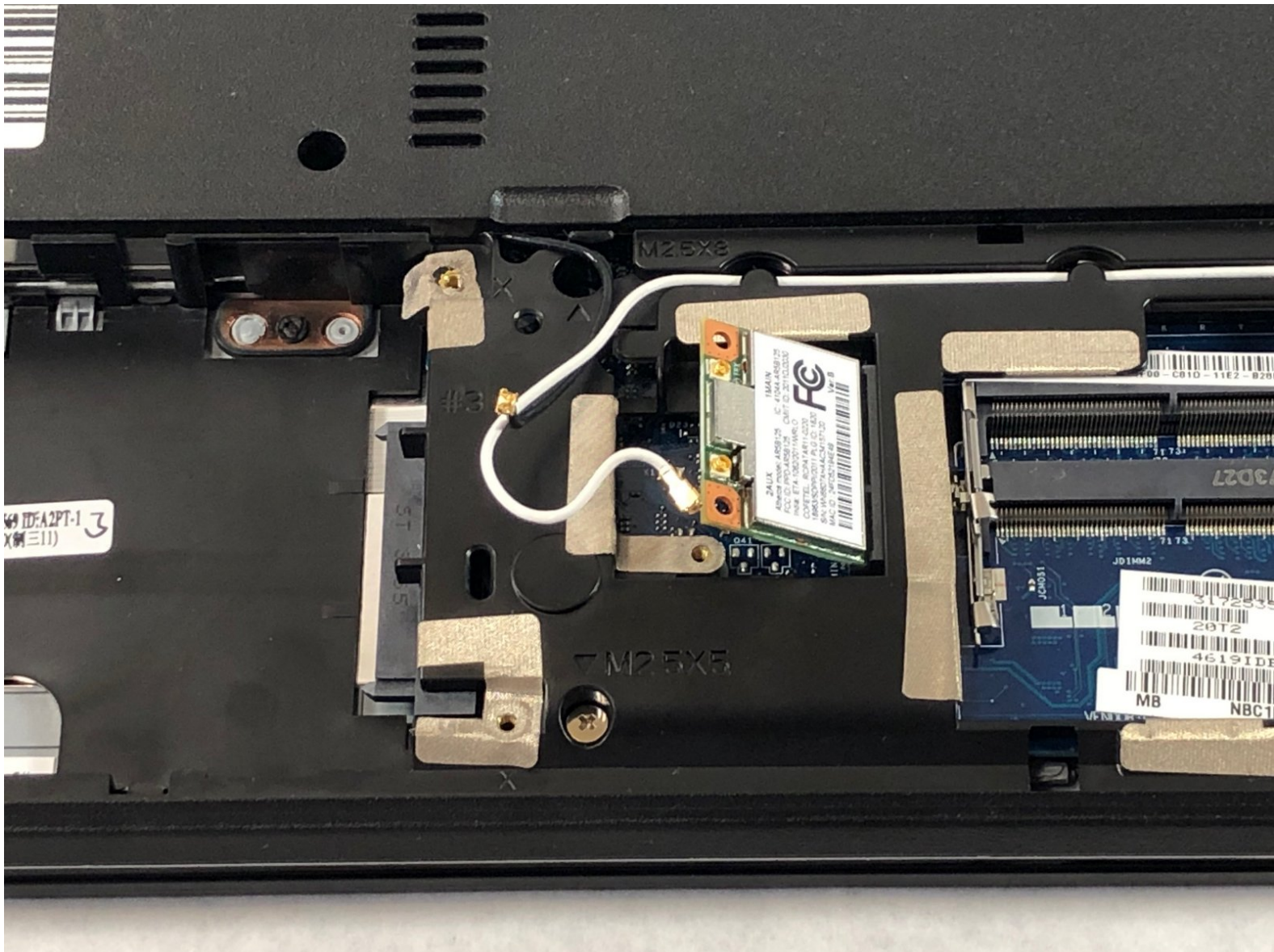




# Acer Aspire E1-531-2438 Wifi Card Replacement

This guide will explain how to remove the WiFi card on an Acer Aspire E1-531-2438.

Written By: Jakob Rinkus



---

## INTRODUCTION

Bad connection to WiFi, connection dropping out, or no connection at all? This guide will explain how to remove the WiFi card on an Acer Aspire E1-531-2438.



### TOOLS:

- [Phillips #0 Screwdriver](#) (1)
  - [Spudger](#) (1)
-

## Step 1 — Battery



 Unplug and power down the device before removing the battery.

- Turn the device over so the back side is facing up.
- Using a spudger, slide the orange latch to the right. This will release the battery, which should pop up from the device.
- Use two hands tilt the side of the battery closest to the orange latch upward as shown in the images.

## Step 2



- Tilt the side of the battery closest to the orange latch upward.
- Lift the battery up and out of the device.

## Step 3 — WiFi Card



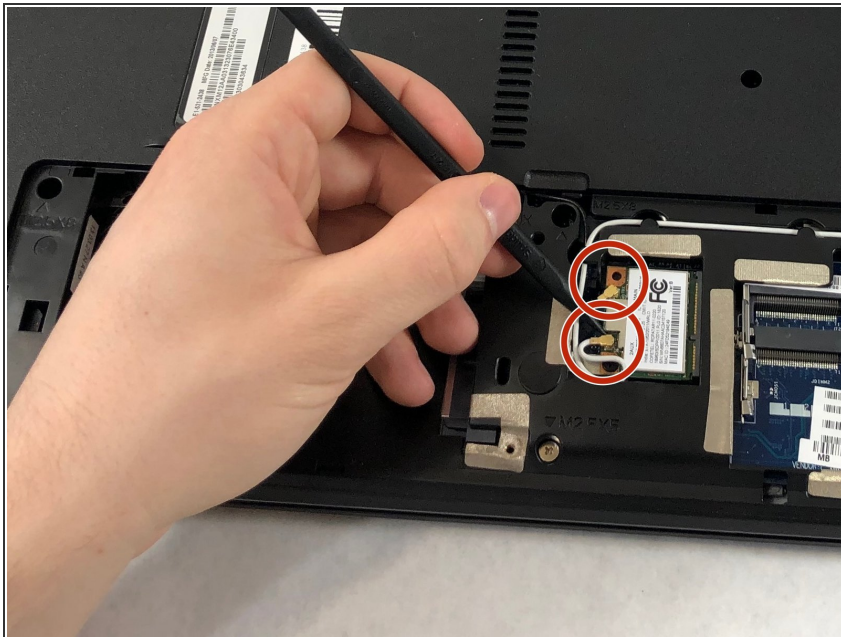
- Using a Phillips #0 screwdriver, remove the two 9mm screws on the access panel.

## Step 4



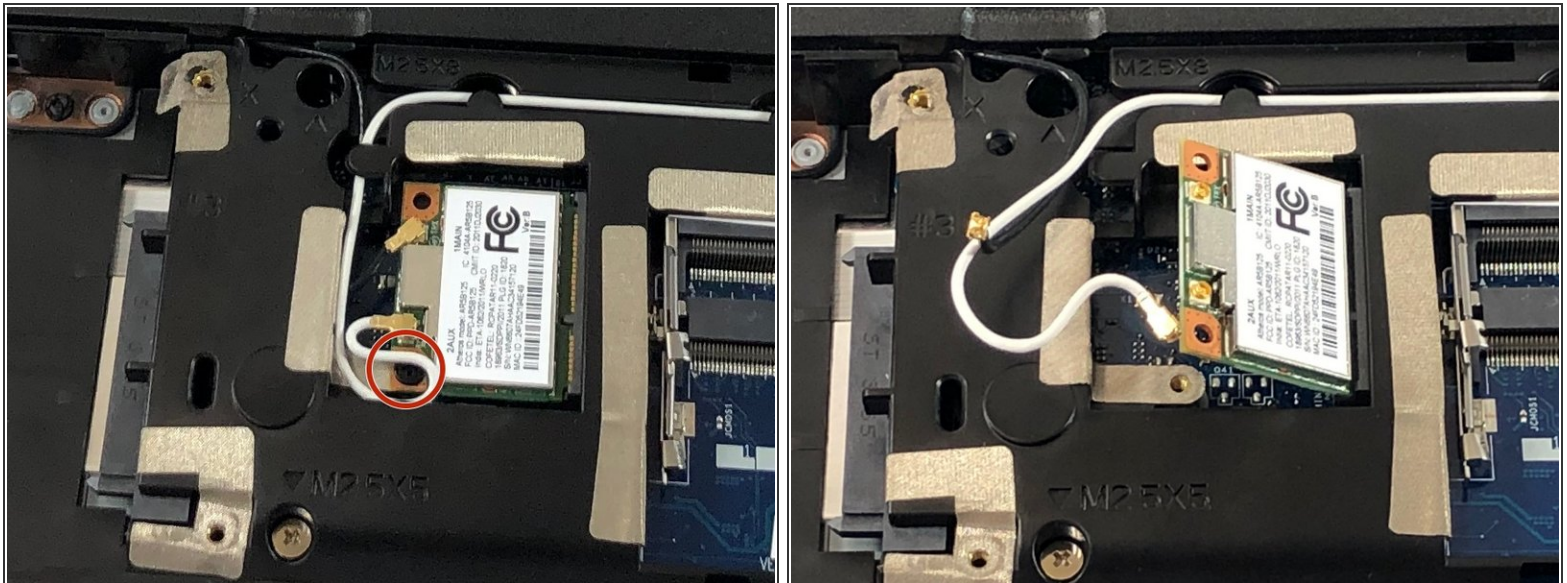
- Using the indentation, pry open the access panel with your fingers or a spudger.
- Remove the access panel to expose the hard drive, WiFi card, and RAM modules.

## Step 5



- Using a spudger, disconnect the two antenna cables connectors on the WiFi card.

## Step 6



- Using a Phillips #0 screwdriver, remove the 3mm screw holding the WiFi card in place.
- The card will then lift up after the screw is removed.
- Remove the card by pulling out in the direction that the card is now orientated.

To reassemble your device, follow these instructions in reverse order.