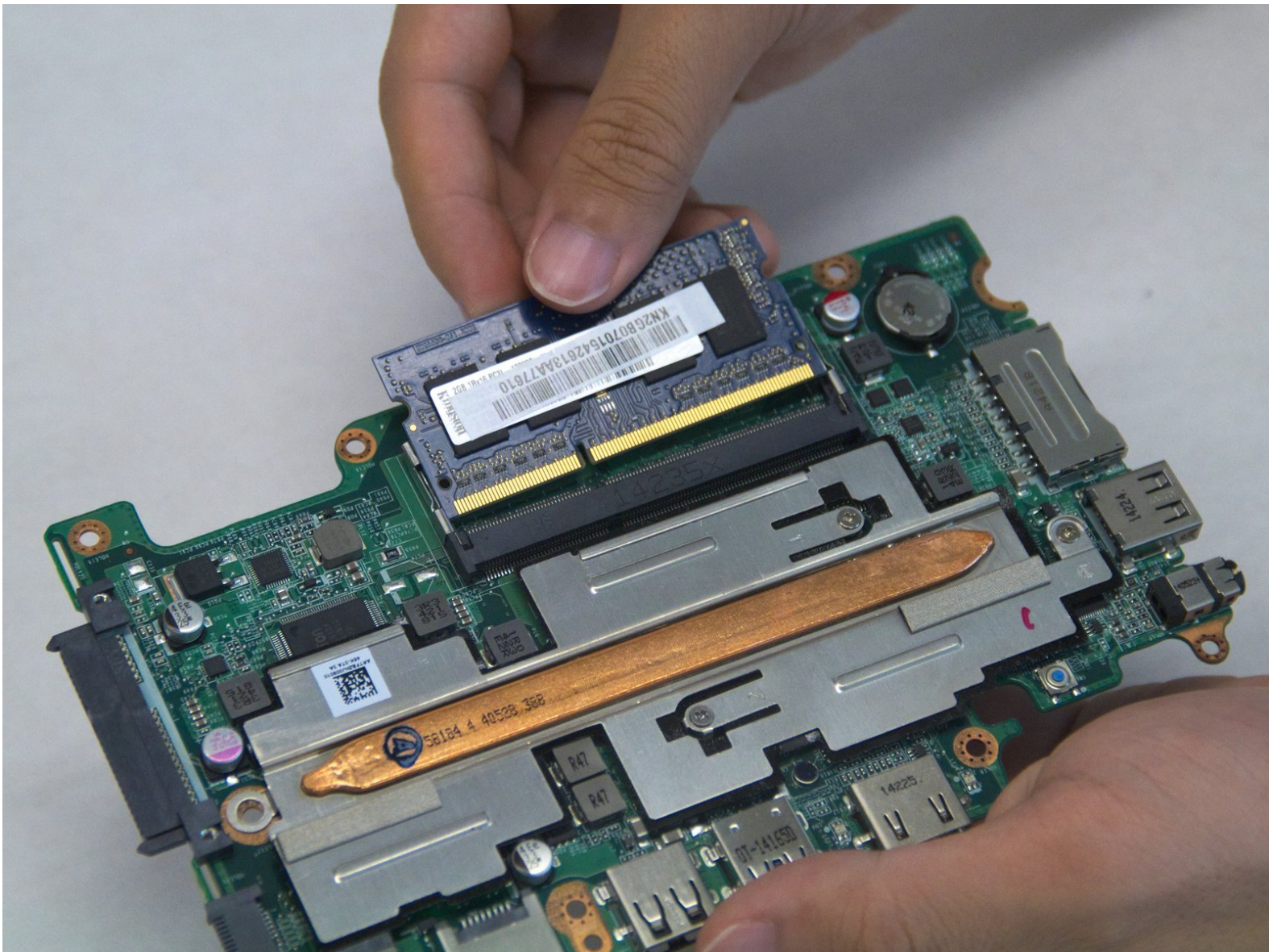




Acer Aspire E3-111-C0WA RAM Replacement

How to replace the 204 pin DDR3L RAM in your Acer Aspire E3-111-C0WA.

Written By: Jonathan Chandler



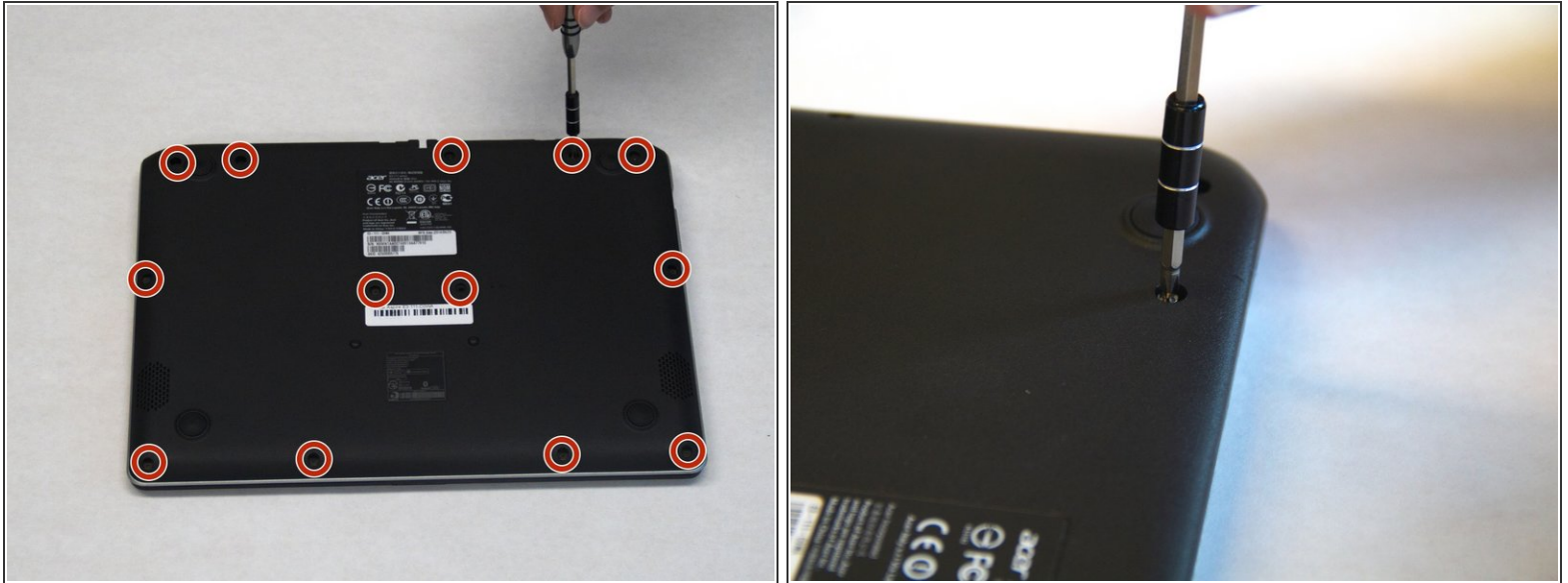
INTRODUCTION

Should you wish to replace or upgrade the memory in your laptop, this guide will show you how to access and remove your old RAM.

TOOLS:

- [iFixit Opening Tools](#) (1)
 - [Phillips #1 Screwdriver](#) (1)
 - [Anti-Static Wrist Strap](#) (1)
-

Step 1 — Battery



- Remove the 13 indicated screws (6.2 mm) using a Phillips #1 screwdriver.

Step 2



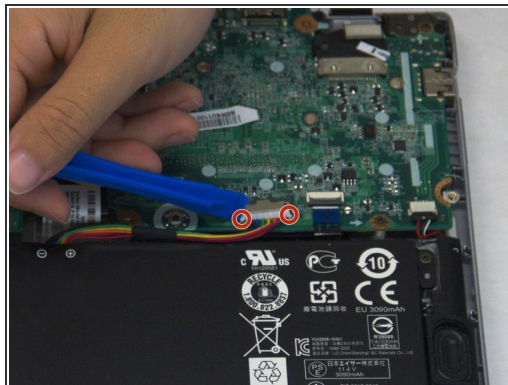
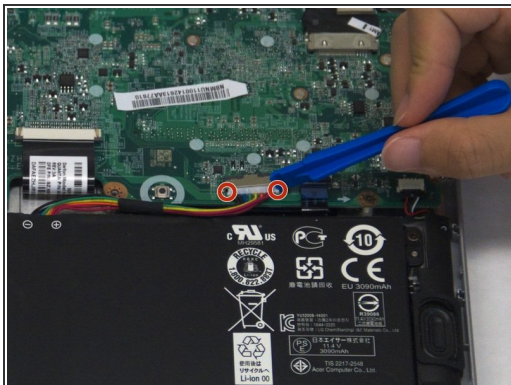
- Insert your plastic opening tool between the bottom case and the rest of the laptop.
- Using the plastic opening tool as a lever, apply downward pressure on the tool to lift the bottom up.
- Make your way around the case with the tool, every so often applying downward pressure to lift the bottom up.
- Lift the bottom off the laptop.

Step 3



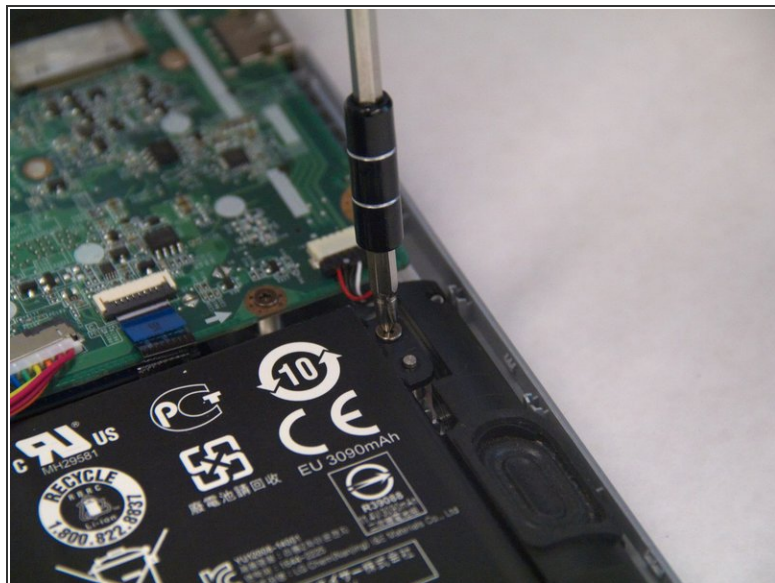
- i** Make sure you have properly grounded yourself to avoid potentially damaging any internal components by wearing the anti-static wrist strap and attaching the clip end to metal.
- Press and hold the battery discharge button on the motherboard for 5 seconds to drain the battery.

Step 4



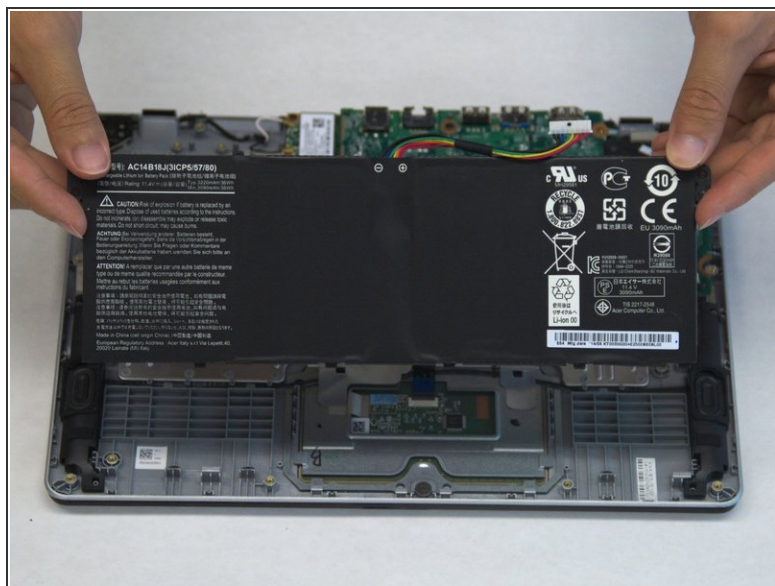
- Dislodge the battery's connector to the motherboard by using the plastic opening tool as a lever on the two small plastic tabs that stick out on either side of the connector.

Step 5



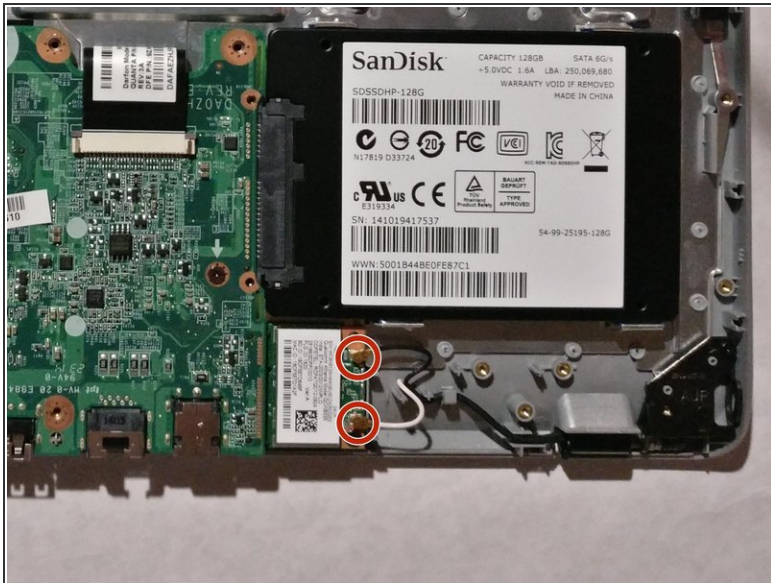
- Unscrew the two 6.2 mm Phillips #1 head screws on either side of the battery as indicated.

Step 6



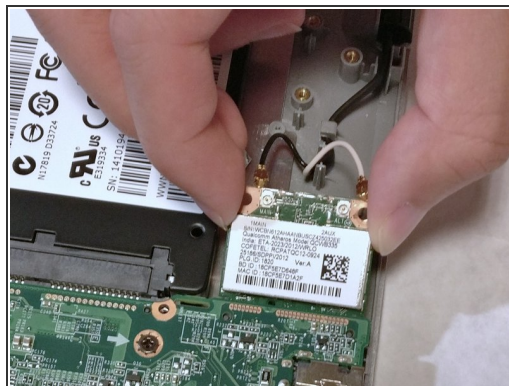
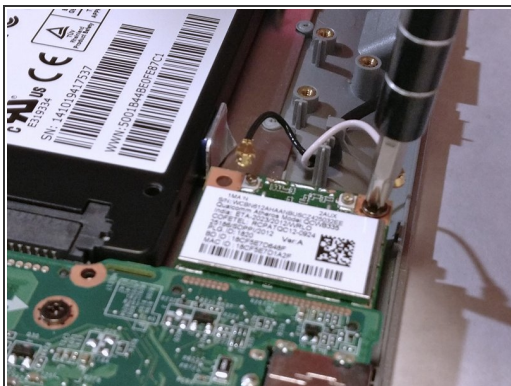
- Lift the battery up and off the rest of the laptop.

Step 7 — Wireless Card



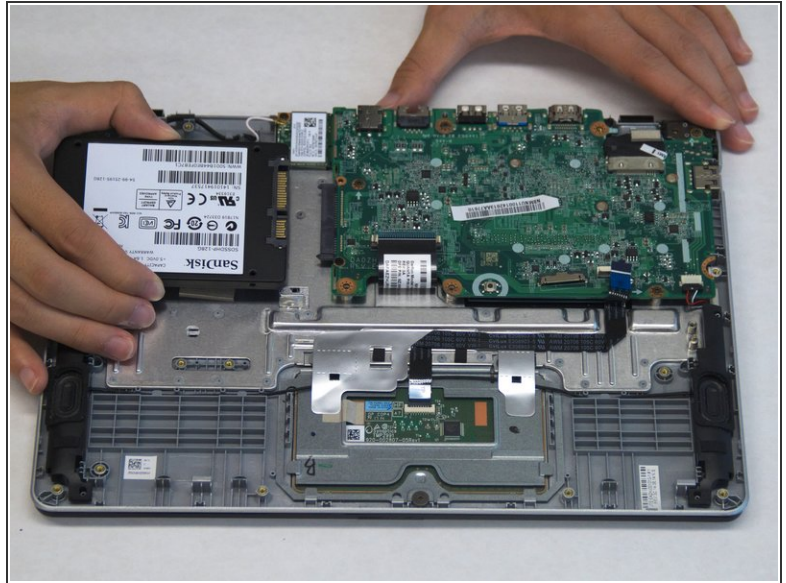
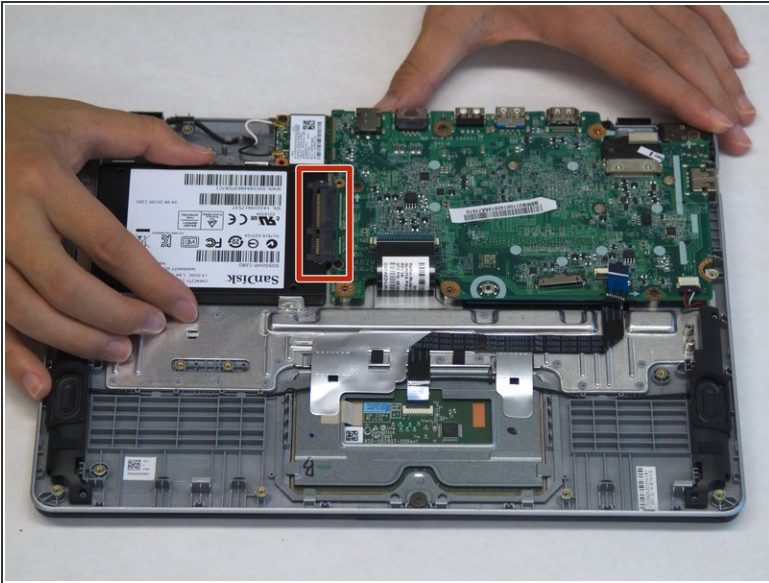
- Remove the two antenna cables from the wireless card. These should snap lightly out of place when lifted upwards.

Step 8



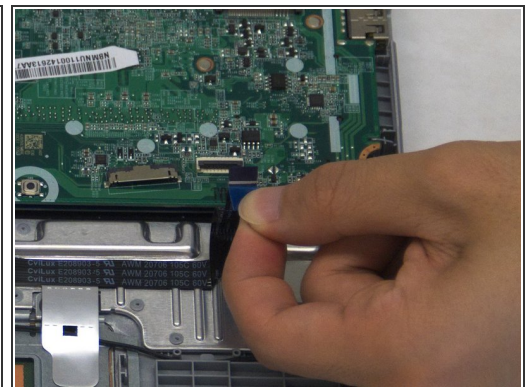
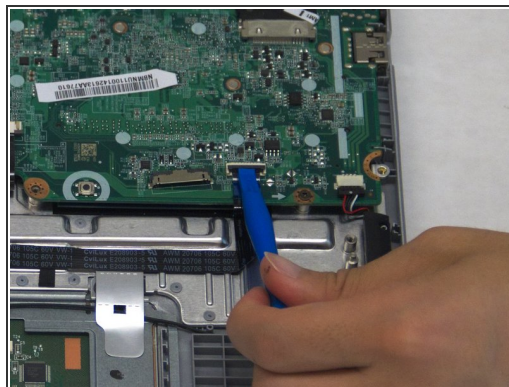
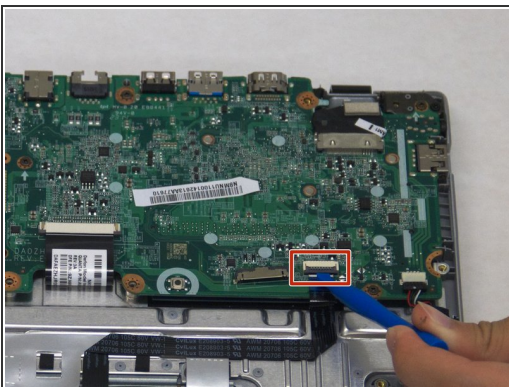
- Remove the 6.2mm #1 Phillips head screw attaching the wireless card to the case.
- Pull the wireless card horizontally away from the motherboard to remove it from the connector.

Step 9 — Hard Drive



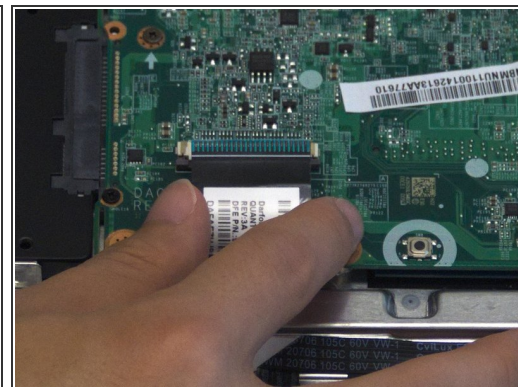
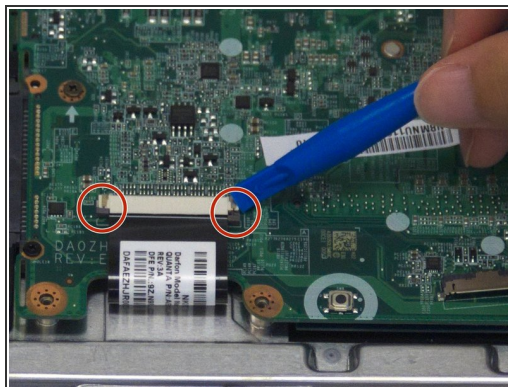
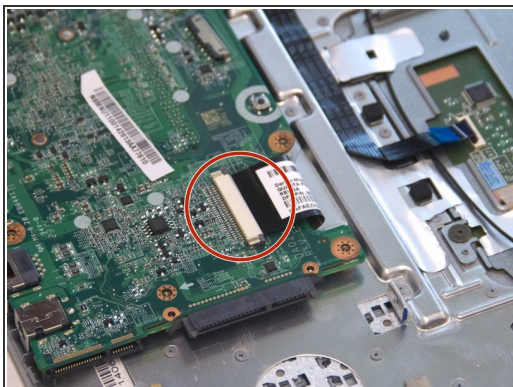
- Holding the laptop in place, slide the hard drive horizontally out from the SATA connector.

Step 10 — RAM



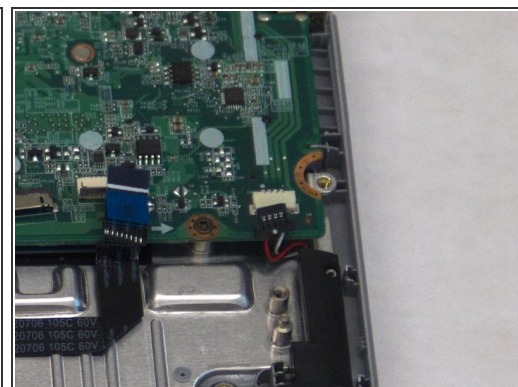
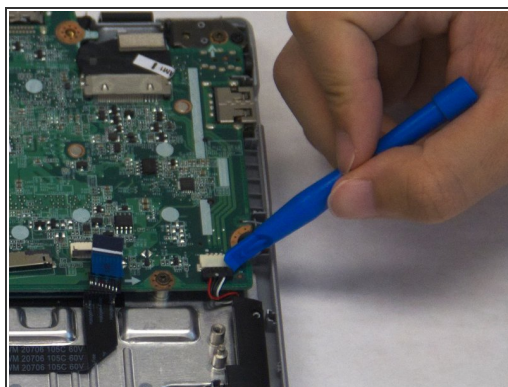
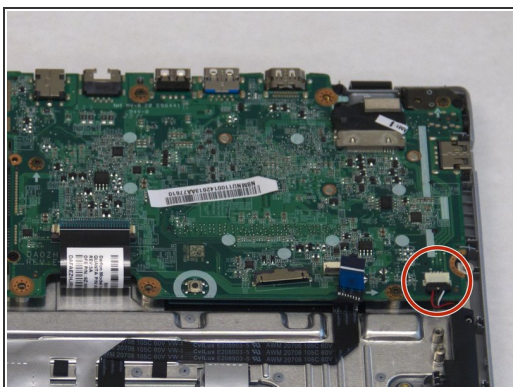
- Lightly pry upwards on the black plastic tab to release the touchpad cable, then gently pull the cable from the connector.

Step 11



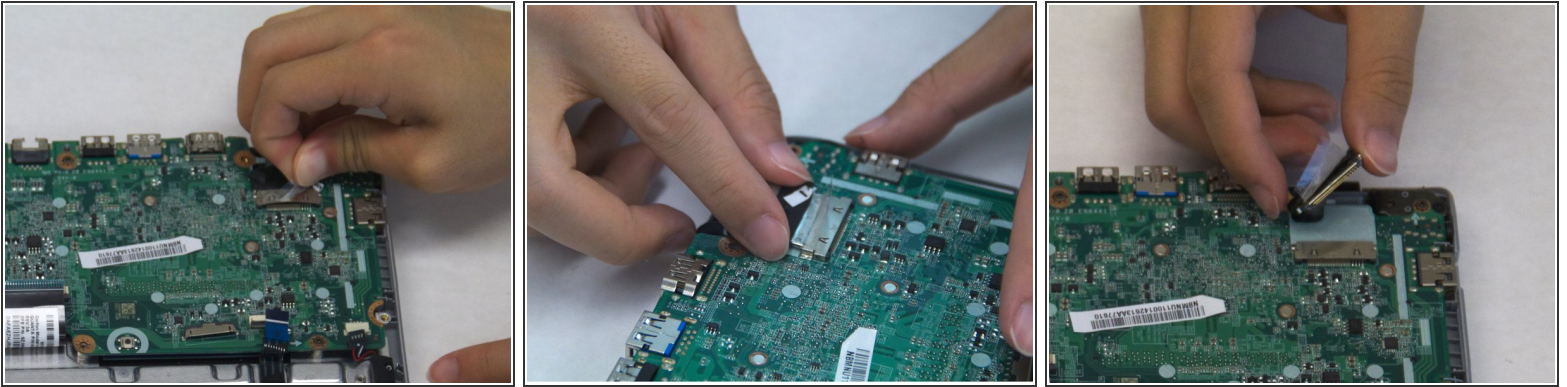
- Find the keyboard cable. Pull the two gray plastic tabs outwards to release the ribbon. Gently pull the cable from the connector.

Step 12



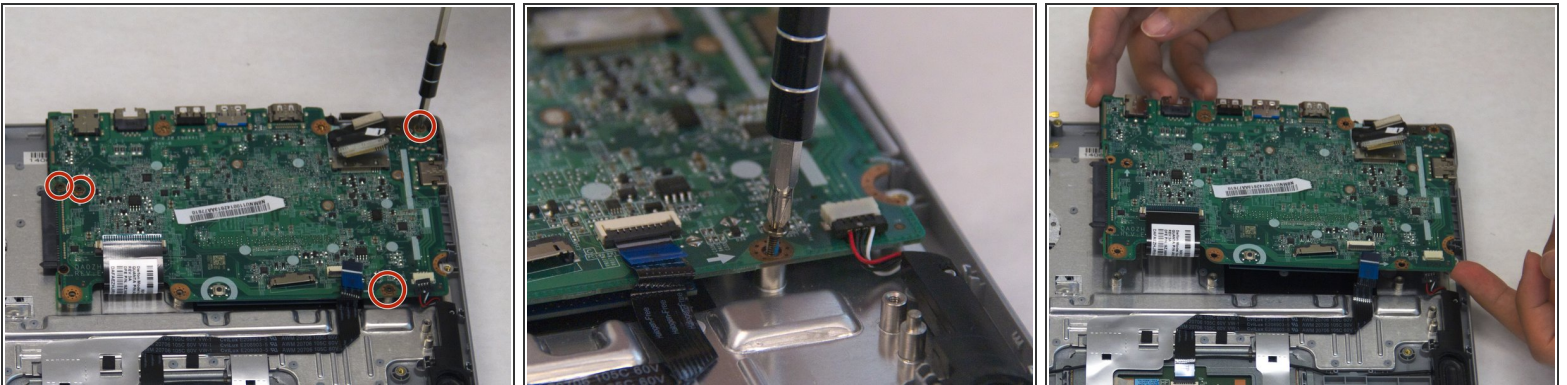
- Pull down gently on the black speaker cable connector to disconnect it from the motherboard.

Step 13



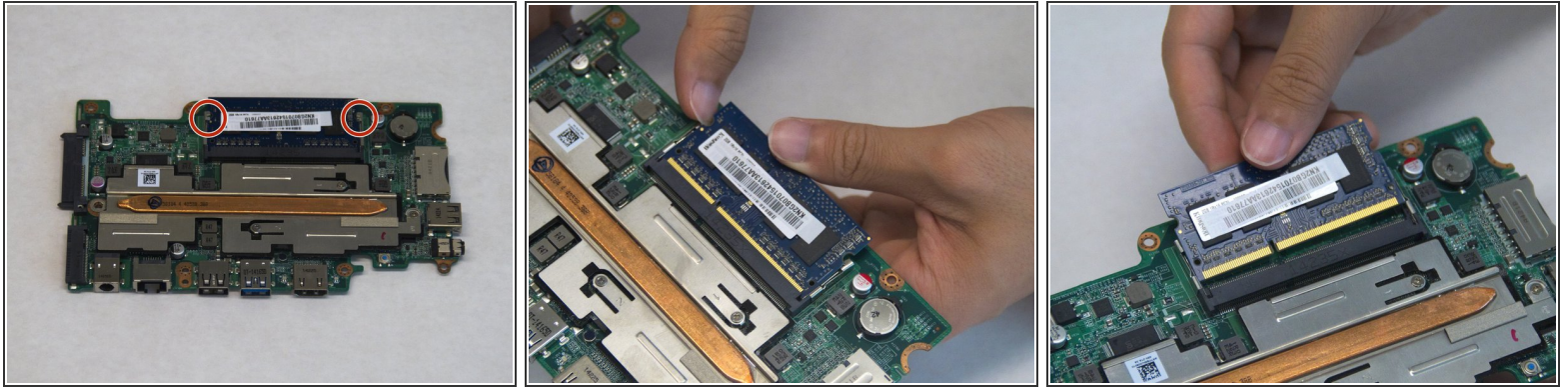
- Peel up the tape adhering the display cable to the connector on the motherboard.
- Slide the display cable horizontally out of the connector to remove it from the motherboard.

Step 14



- Unscrew the four 6.2mm Phillips #1 screws attaching the motherboard to the case.
- With all the screws and cables detached, lift the motherboard directly upwards out of the case.

Step 15



- Flip over the motherboard after removing it from the case.
 - Apply pressure outward on the metal tabs on either side of the RAM stick to release them from the notches on the stick.
- ⚠ The RAM stick may be under some tension and potentially fly out of the socket if not held in place as the tabs are released.
- After the tabs have been released, slide the RAM out of the slot.

To reassemble your device, follow these instructions in reverse order.