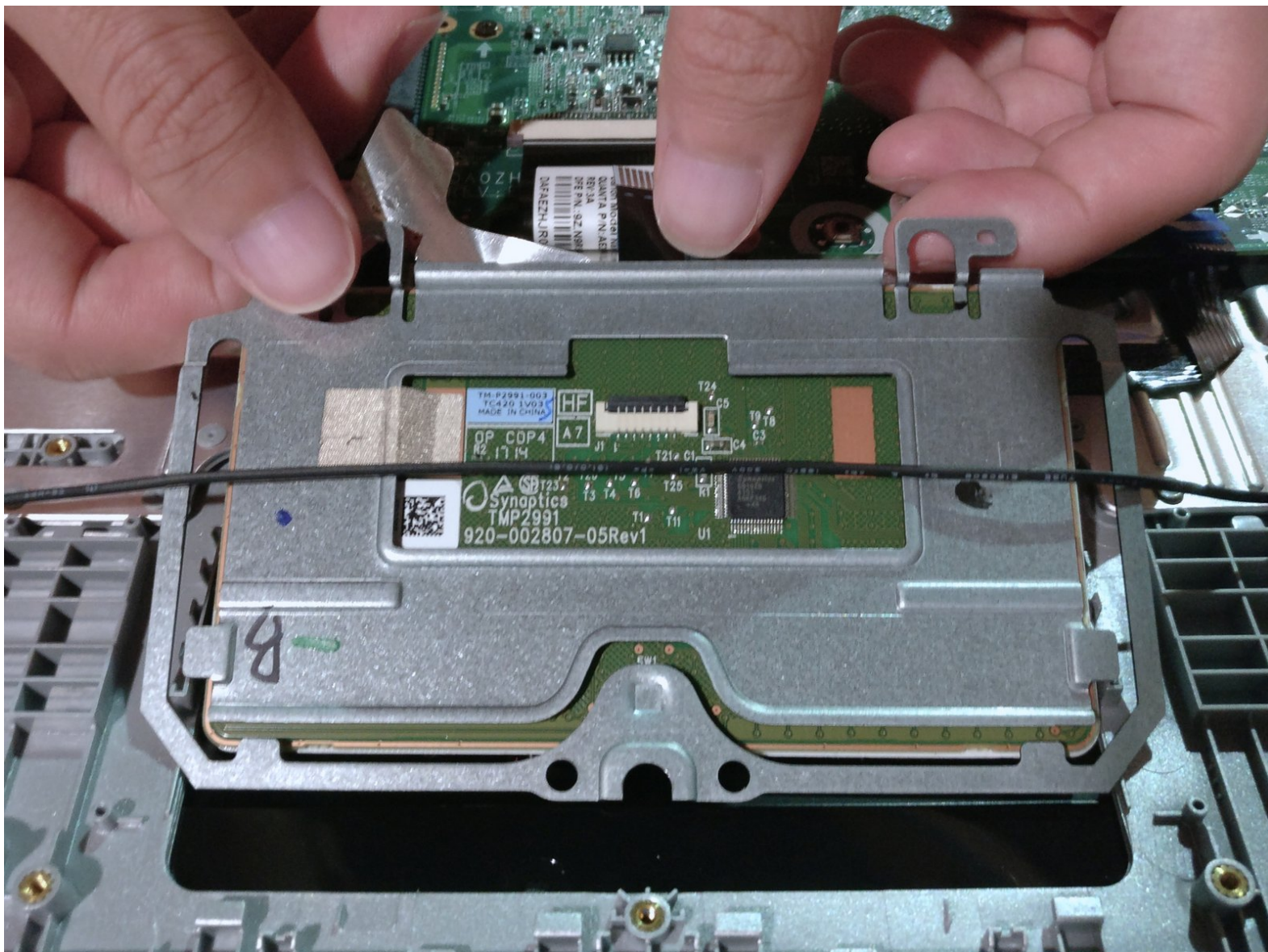




Acer Aspire E3-111-C0WA Touchpad Replacement

How to replace the Synaptics Precision Touchpad in your Acer Aspire E3-111-C0WA.

Written By: Jonathan Chandler



INTRODUCTION

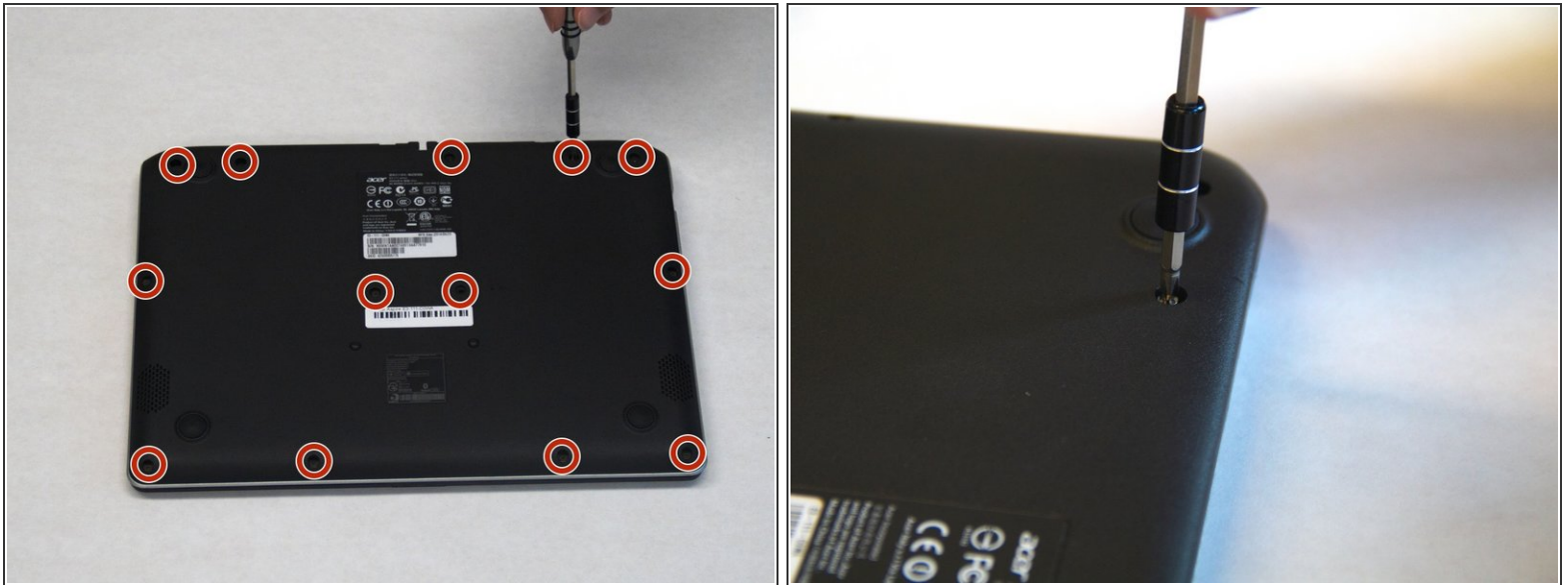
This guide will help you replace the touchpad on your computer.



TOOLS:

- [iFixit Opening Tools](#) (1)
 - [Phillips #1 Screwdriver](#) (1)
 - [Anti-Static Wrist Strap](#) (1)
-

Step 1 — Battery



- Remove the 13 indicated screws (6.2 mm) using a Phillips #1 screwdriver.

Step 2



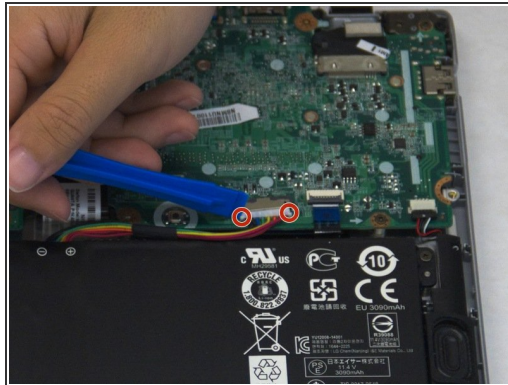
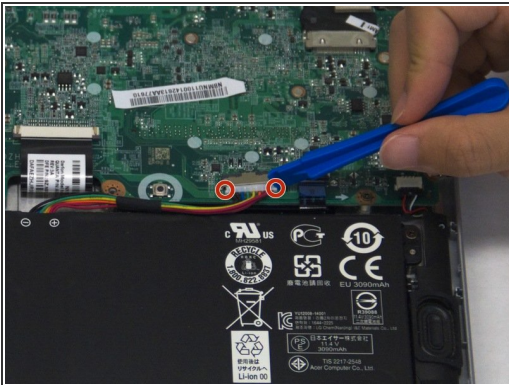
- Insert your plastic opening tool between the bottom case and the rest of the laptop.
- Using the plastic opening tool as a lever, apply downward pressure on the tool to lift the bottom up.
- Make your way around the case with the tool, every so often applying downward pressure to lift the bottom up.
- Lift the bottom off the laptop.

Step 3



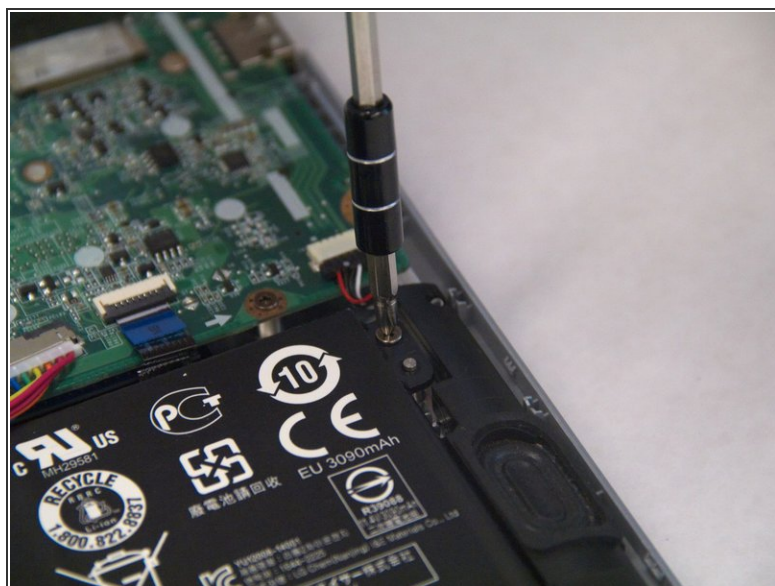
- i** Make sure you have properly grounded yourself to avoid potentially damaging any internal components by wearing the anti-static wrist strap and attaching the clip end to metal.
- Press and hold the battery discharge button on the motherboard for 5 seconds to drain the battery.

Step 4



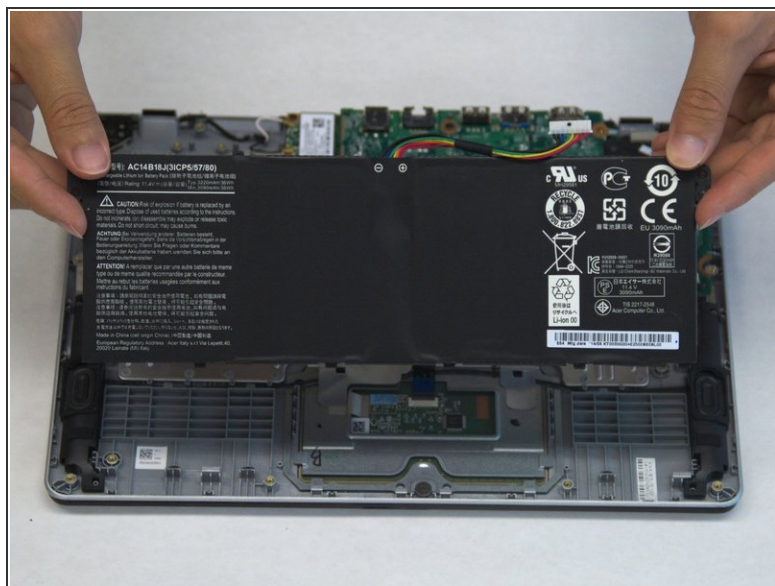
- Dislodge the battery's connector to the motherboard by using the plastic opening tool as a lever on the two small plastic tabs that stick out on either side of the connector.

Step 5



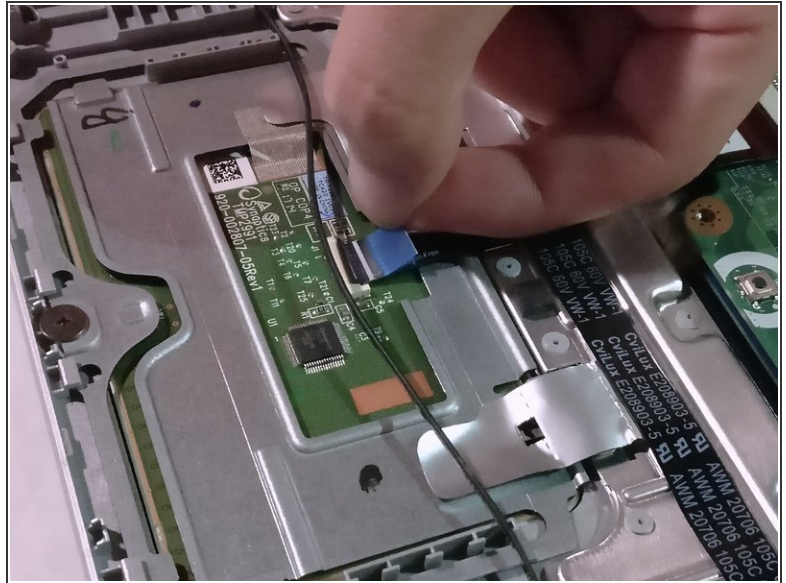
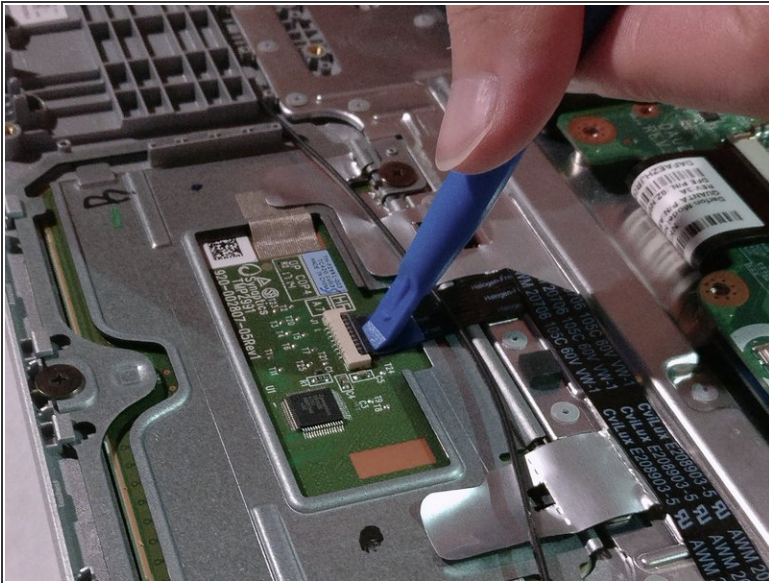
- Unscrew the two 6.2 mm Phillips #1 head screws on either side of the battery as indicated.

Step 6



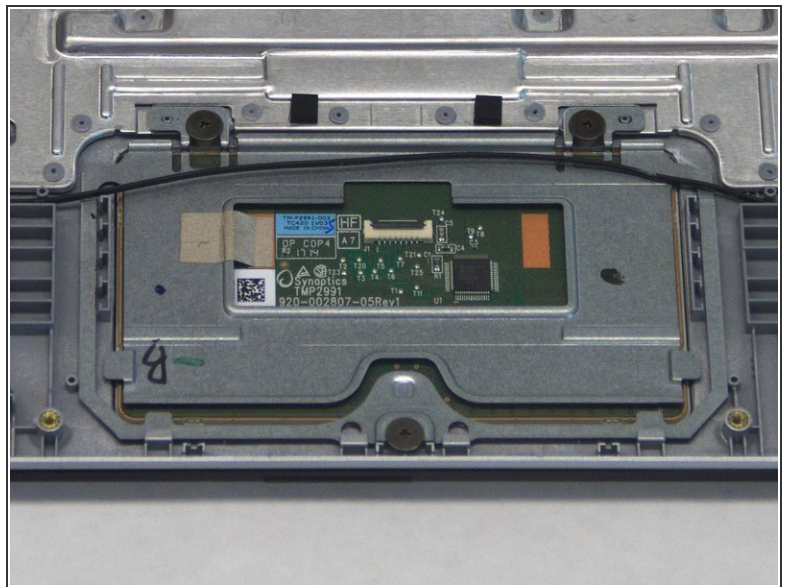
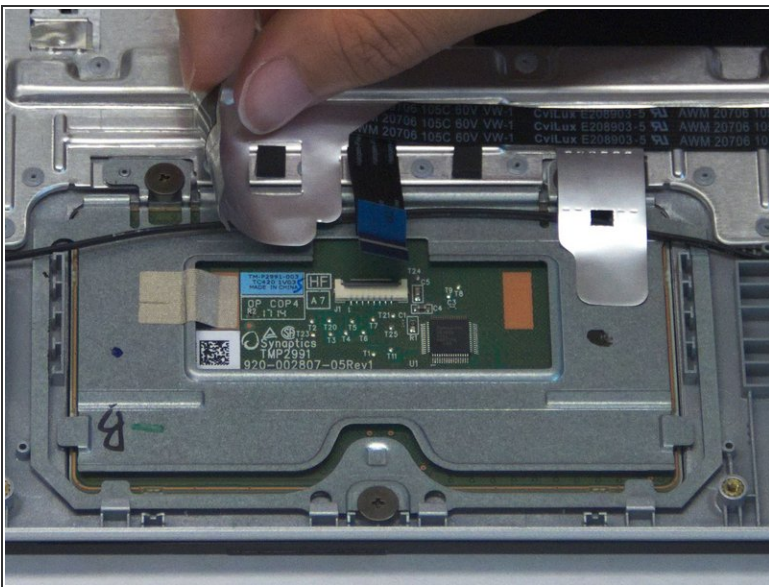
- Lift the battery up and off the rest of the laptop.

Step 7 — Touchpad



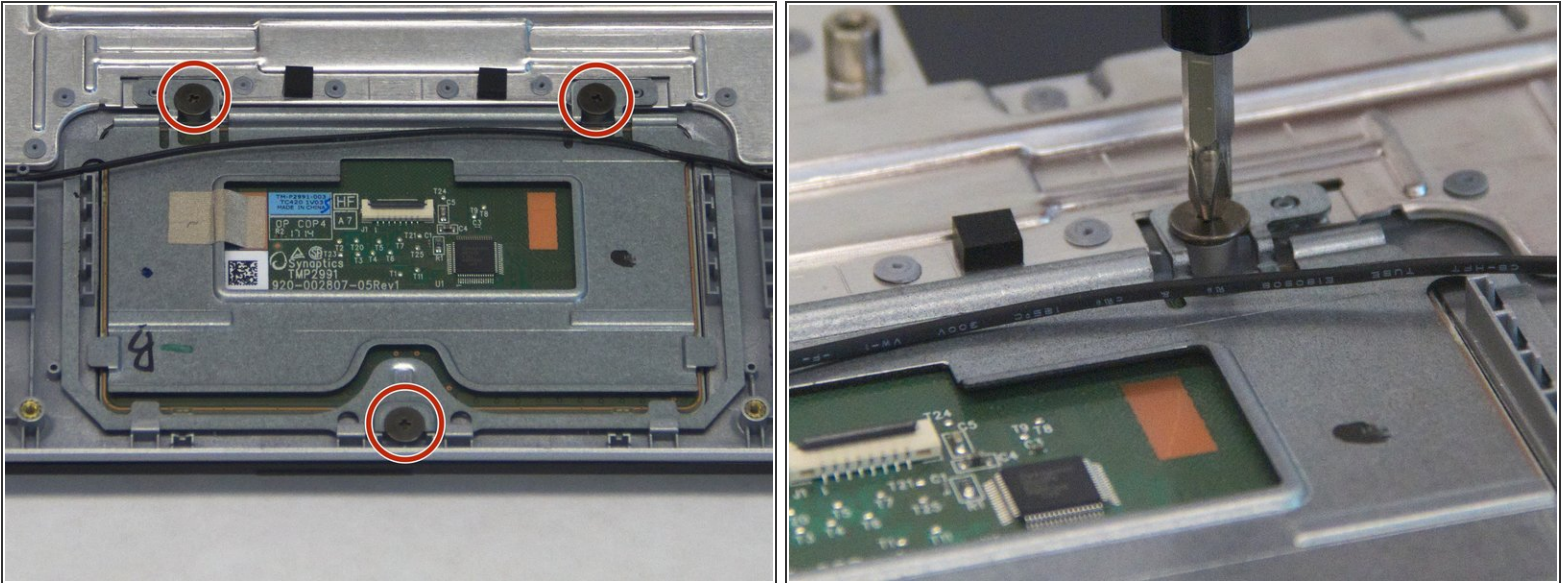
- Lift up on the black tab to release the ribbon cable from the touchpad.
- Lightly pull on the blue tab to remove the cable from the connector.

Step 8



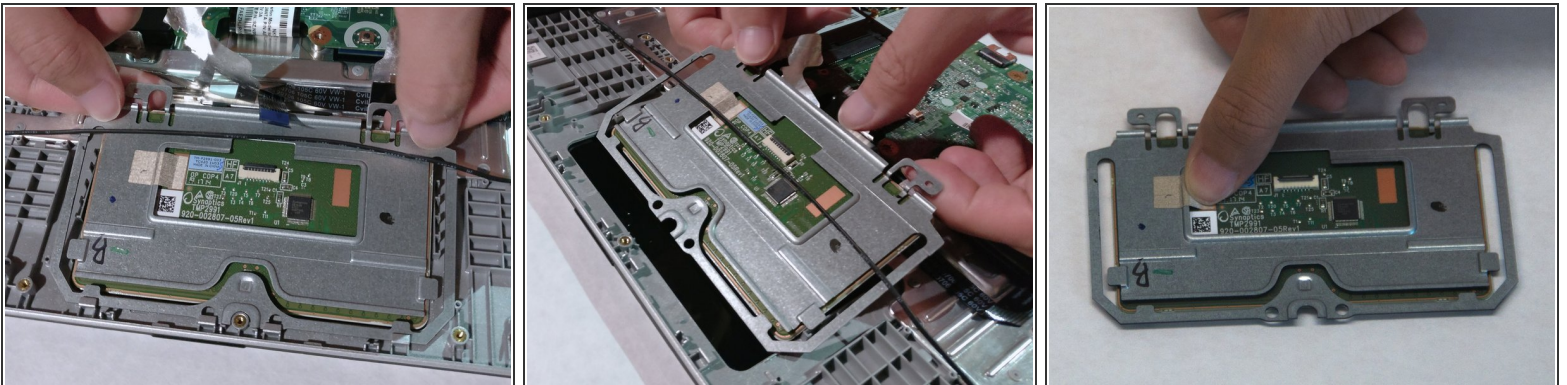
- Peel up the silver tape adhering the touchpad cable to the case, revealing two screws underneath.

Step 9



- Unscrew the three 6.2mm Phillips #1 screws holding the touchpad to the case.

Step 10



- Lift the touchpad assembly out of the case by its corners.
- Slide the touchpad out of the chassis from under the speaker cable, taking care not to damage the cable.
- ⓘ Check to make sure the small strip of conductive tape connecting the copper pad on the PCB to the metal assembly is properly adhered.

To reassemble your device, follow these instructions in reverse order.