



Acer Aspire E3-111-C0WA Wireless Card Replacement

How to replace the WiFi/Bluetooth card in your Acer Aspire E3-111-C0WA.

Written By: Jonathan Chandler



INTRODUCTION

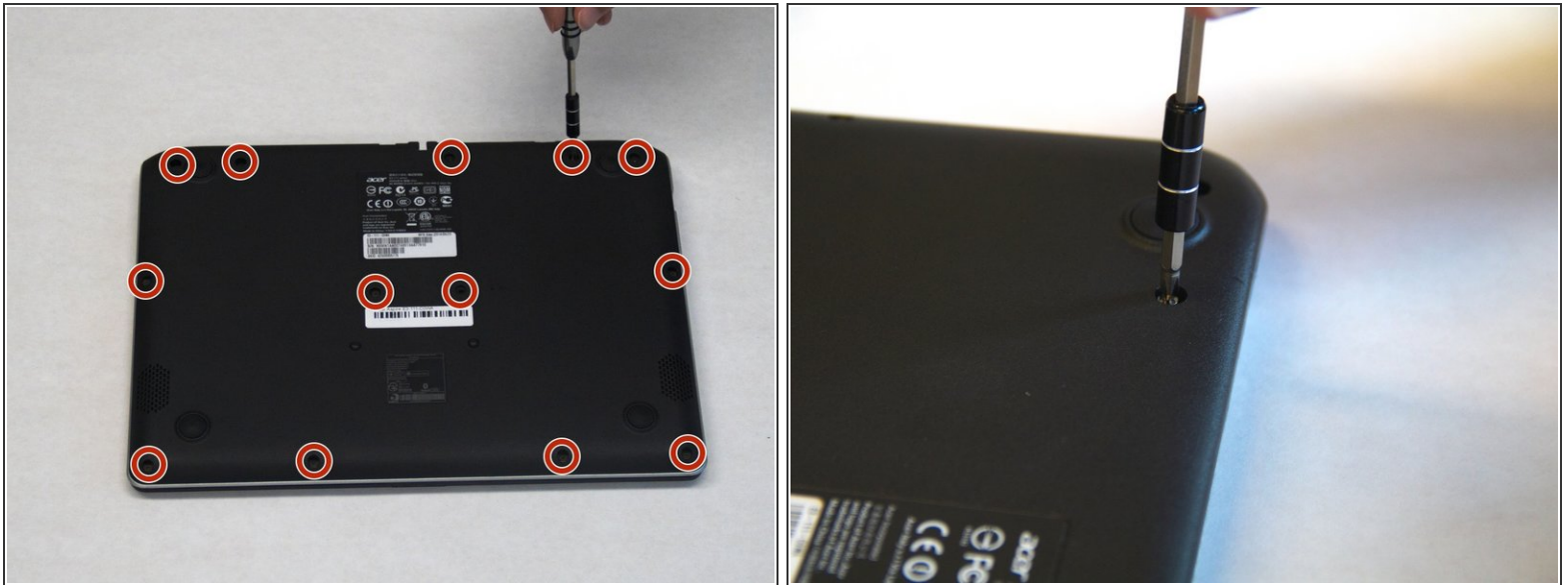
If your wireless card needs replacement, follow the steps in this guide to remove it.



TOOLS:

- [iFixit Opening Tools](#) (1)
 - [Phillips #1 Screwdriver](#) (1)
 - [Anti-Static Wrist Strap](#) (1)
-

Step 1 — Battery



- Remove the 13 indicated screws (6.2 mm) using a Phillips #1 screwdriver.

Step 2



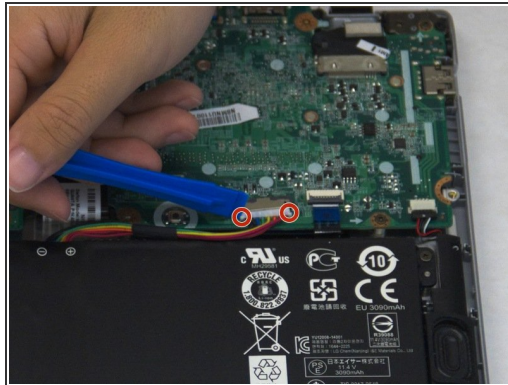
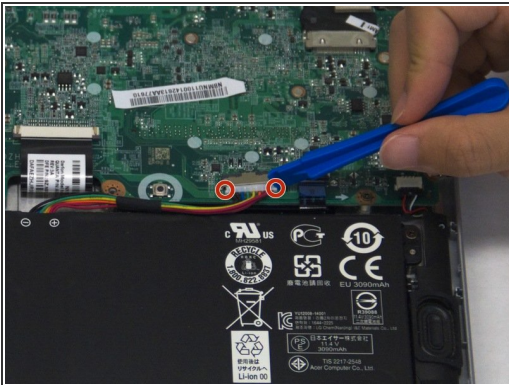
- Insert your plastic opening tool between the bottom case and the rest of the laptop.
- Using the plastic opening tool as a lever, apply downward pressure on the tool to lift the bottom up.
- Make your way around the case with the tool, every so often applying downward pressure to lift the bottom up.
- Lift the bottom off the laptop.

Step 3



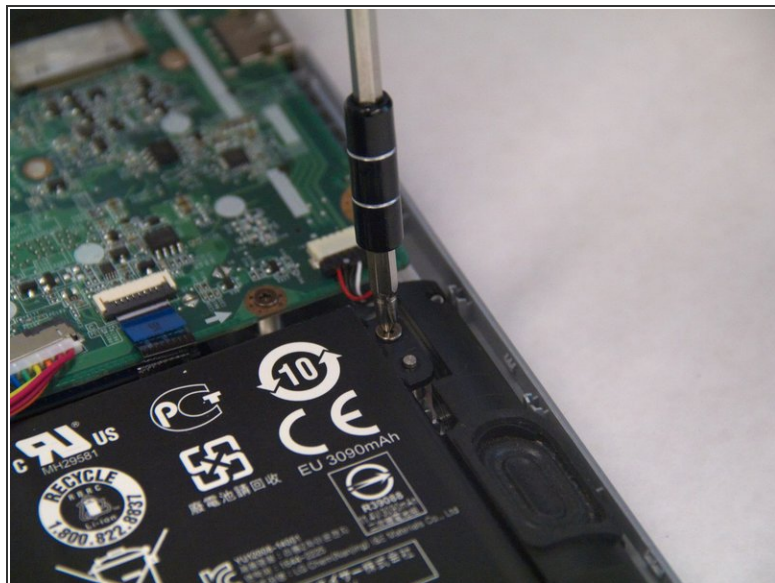
- i Make sure you have properly grounded yourself to avoid potentially damaging any internal components by wearing the anti-static wrist strap and attaching the clip end to metal.
- Press and hold the battery discharge button on the motherboard for 5 seconds to drain the battery.

Step 4



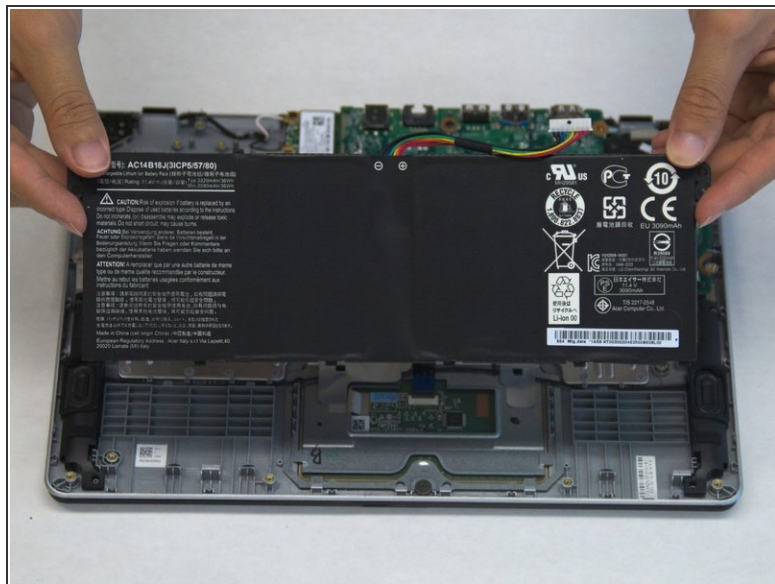
- Dislodge the battery's connector to the motherboard by using the plastic opening tool as a lever on the two small plastic tabs that stick out on either side of the connector.

Step 5



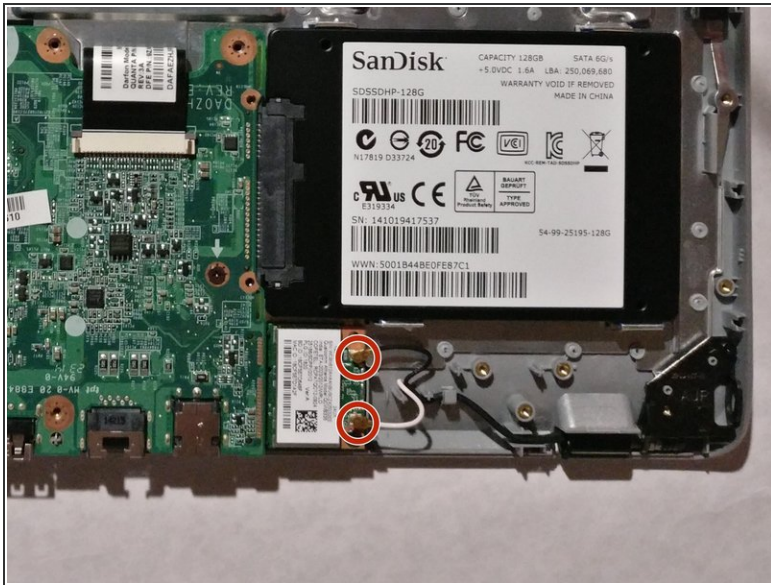
- Unscrew the two 6.2 mm Phillips #1 head screws on either side of the battery as indicated.

Step 6



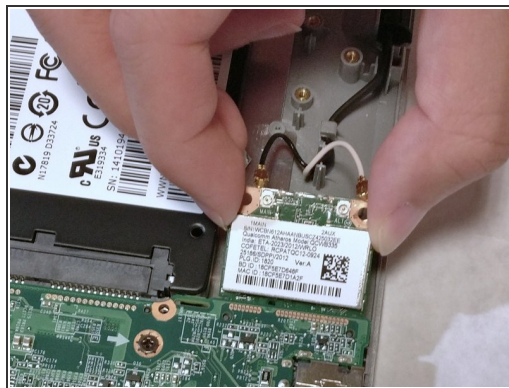
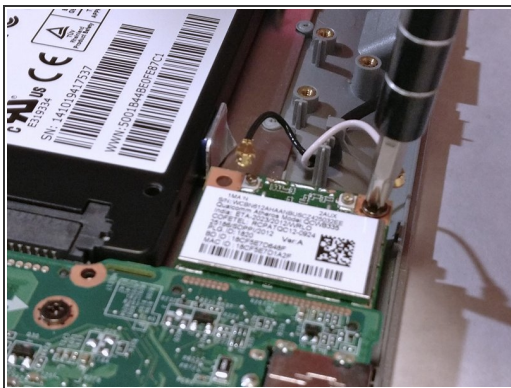
- Lift the battery up and off the rest of the laptop.

Step 7 — Wireless Card



- Remove the two antenna cables from the wireless card. These should snap lightly out of place when lifted upwards.

Step 8



- Remove the 6.2mm #1 Phillips head screw attaching the wireless card to the case.
- Pull the wireless card horizontally away from the motherboard to remove it from the connector.

To reassemble your device, follow these instructions in reverse order.