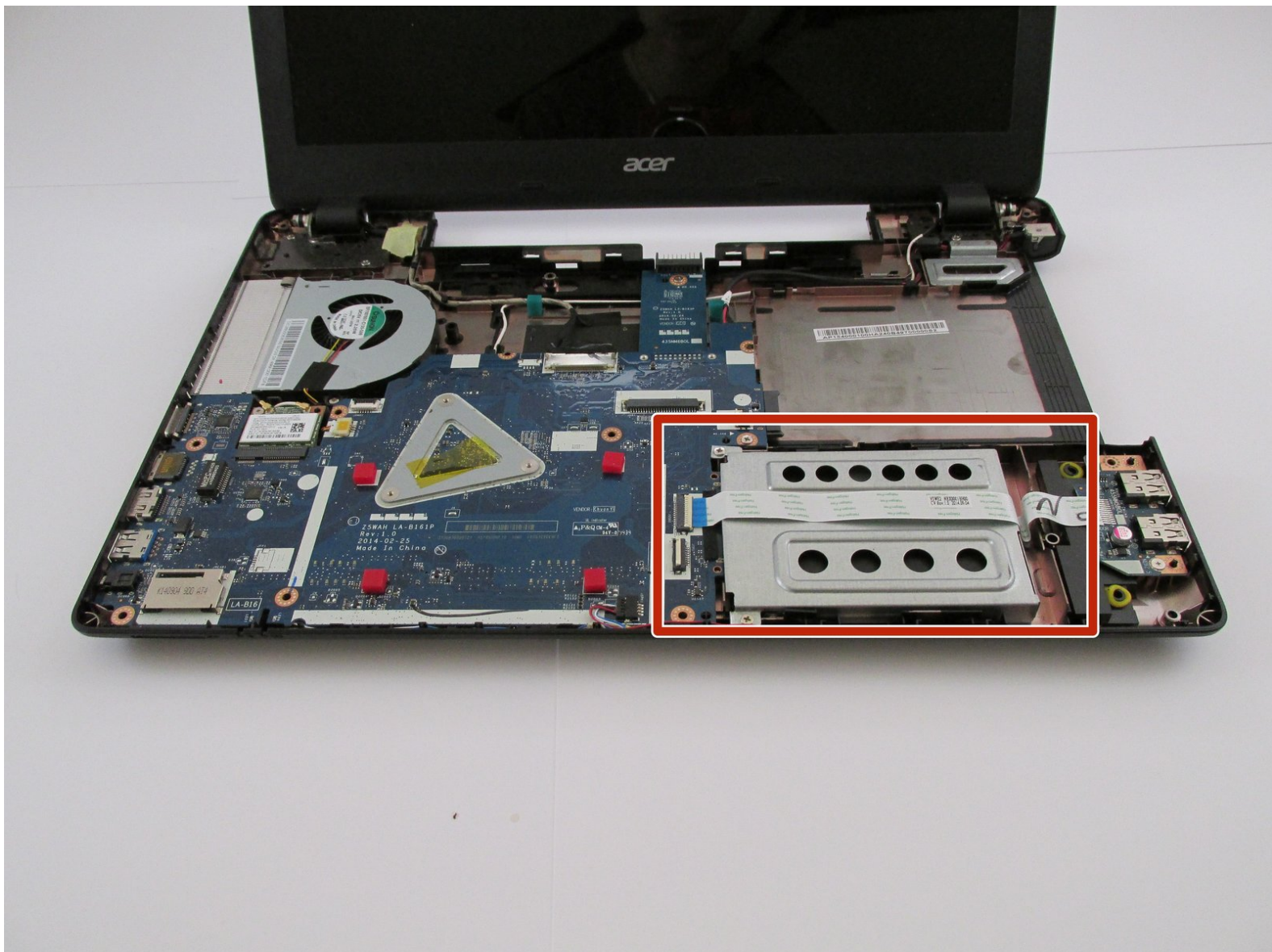




Acer Aspire E5-571 Hard Drive Replacement

Hard drive replacement guide.

Written By: daniel sawyer



INTRODUCTION

If the hard drive has broken or if you are planning on putting in an SSD hard drive, this guide will show you how.



TOOLS:

- [Metal Spudger](#) (1)
- [iFixit Opening Tools](#) (1)
- [Phillips #0 Screwdriver](#) (1)
- [Phillips #1 Screwdriver](#) (1)



PARTS:

- [1 TB SSD / Upgrade Bundle](#) (1)
- [250 GB SSD / Upgrade Bundle](#) (1)
- [500 GB SSD / Upgrade Bundle](#) (1)
- [2 TB SSD / Upgrade Bundle](#) (1)

Step 1 — Battery



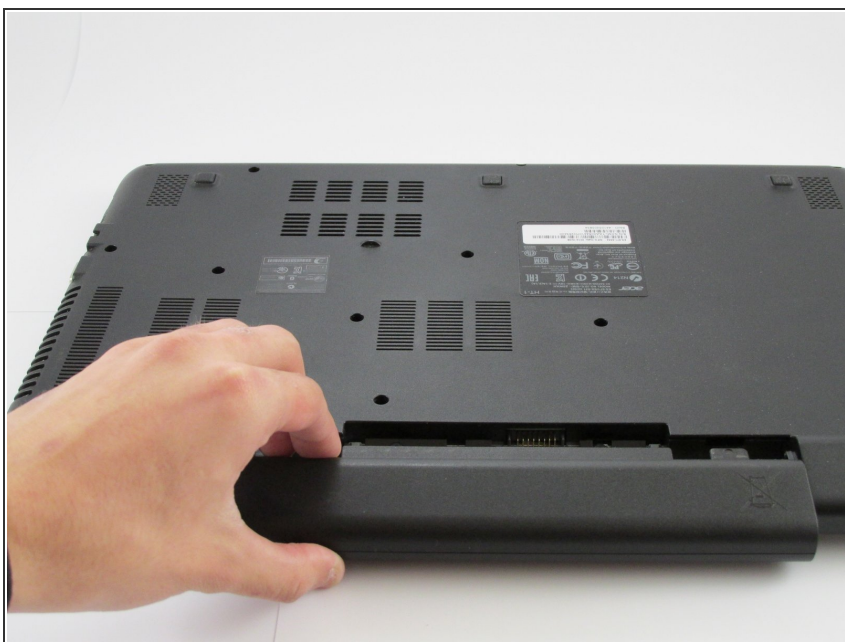
- ⚠ Make sure the laptop is shut down.
- Flip the laptop upside down with the battery facing towards your body and locate the battery lock circled in red.

Step 2



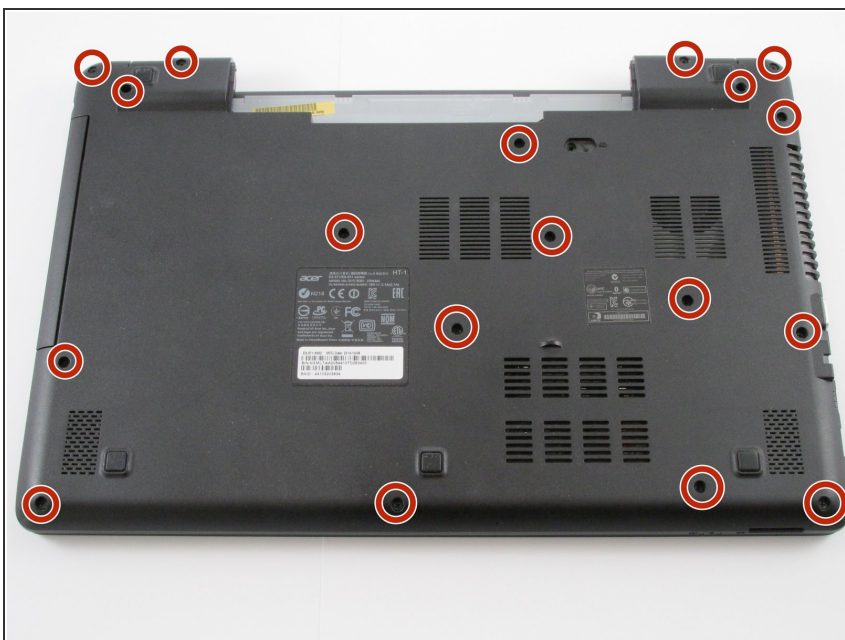
- Use a small screwdriver or pen and place it into the battery lock as shown.
- Gently slide it to the left until you hear the battery release.

Step 3



- Pull the battery towards your body as shown in the picture.

Step 4 — Keyboard



- Remove all eighteen 8 mm Phillips #0 screws with a Phillips #0 screwdriver and set aside.
- ⓘ All of these screws are identical, 8 mm, Phillips #0 screws.

Step 5

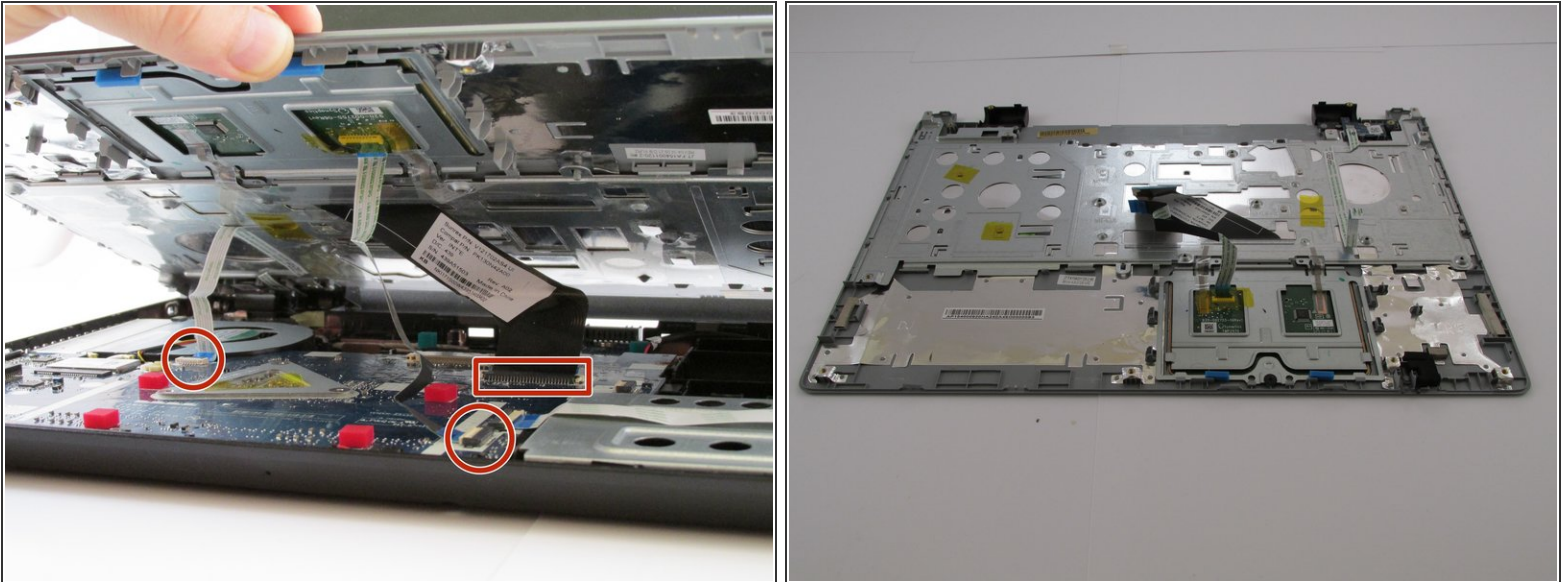


- Move around the edge with metal spudger and carefully pry apart the keyboard.

- Be careful not to break the plastic clips.

⚠ Once all edges are loose, do not remove the keyboard until after next step!

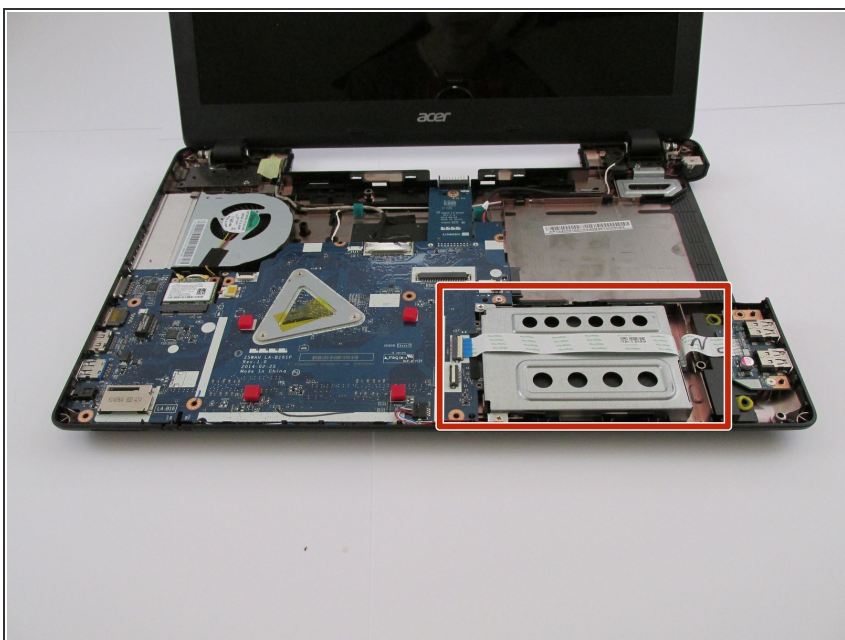
Step 6



- Carefully detach the three ZIF ribbons connected to the motherboard by flipping up the white hinge.

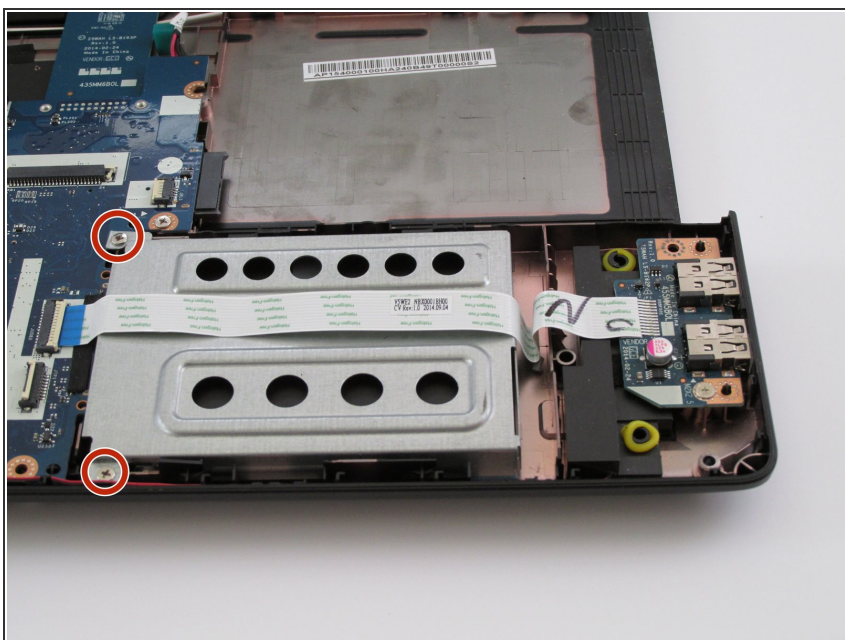
- Lift up on the keyboard and the whole top should come right off, including the touchpad.

Step 7 — Hard Drive



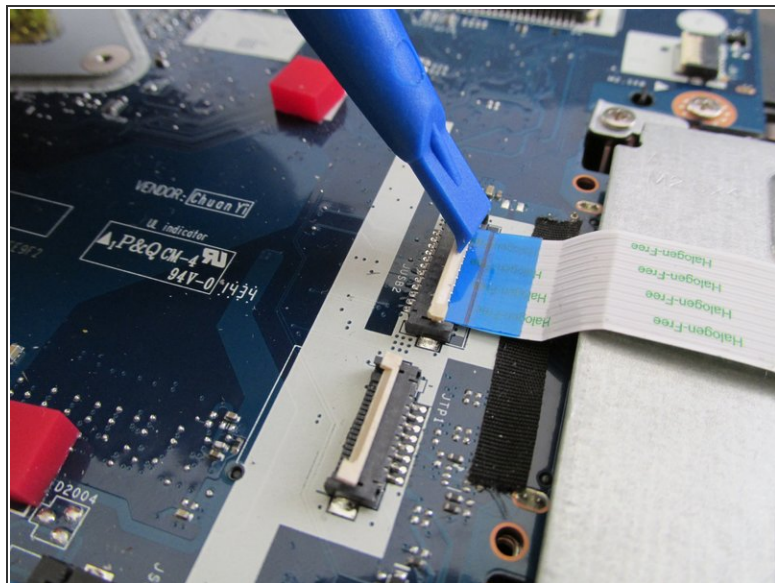
- Locate the hard drive in the metal casing.

Step 8



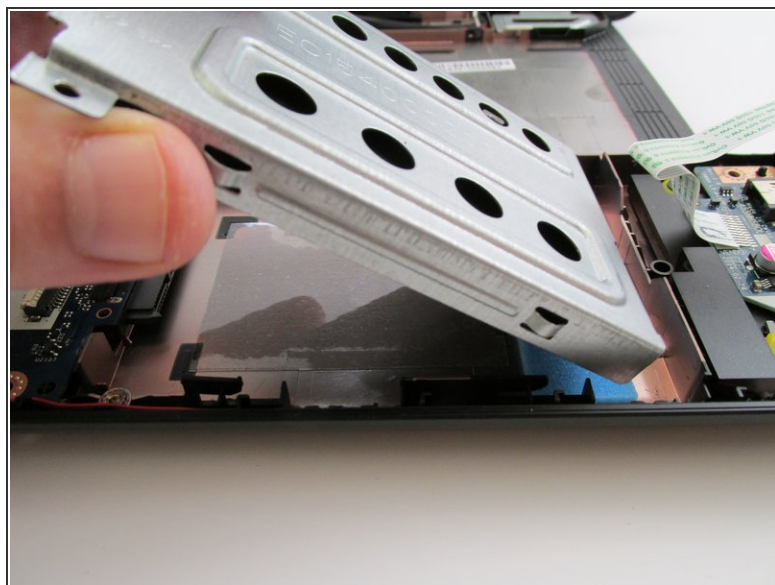
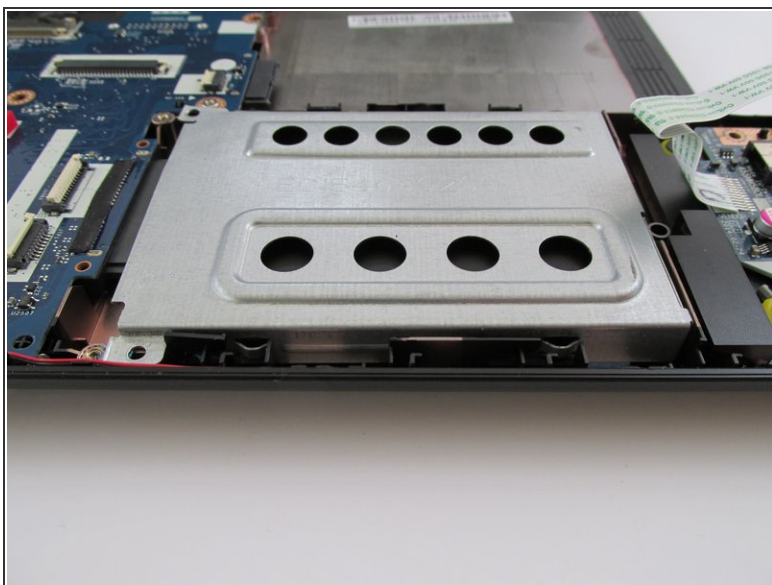
- Remove these two 4 mm Phillips #1 screws.

Step 9



- Locate this ZIF ribbon and carefully flip the white top hinge up and bend the ribbon over to the right side.

Step 10



- Slide the hard drive to the right and gently lift it off of the laptop.

Step 11



- There is one screw on each side of the metal hard drive casing you remove.
- Slide the hard drive out of the metal casing.

To reassemble your device, follow these instructions in reverse order.